

**OFFICIAL DESCRIPTION CHANGE**

**OFFICE:** Transportation Data

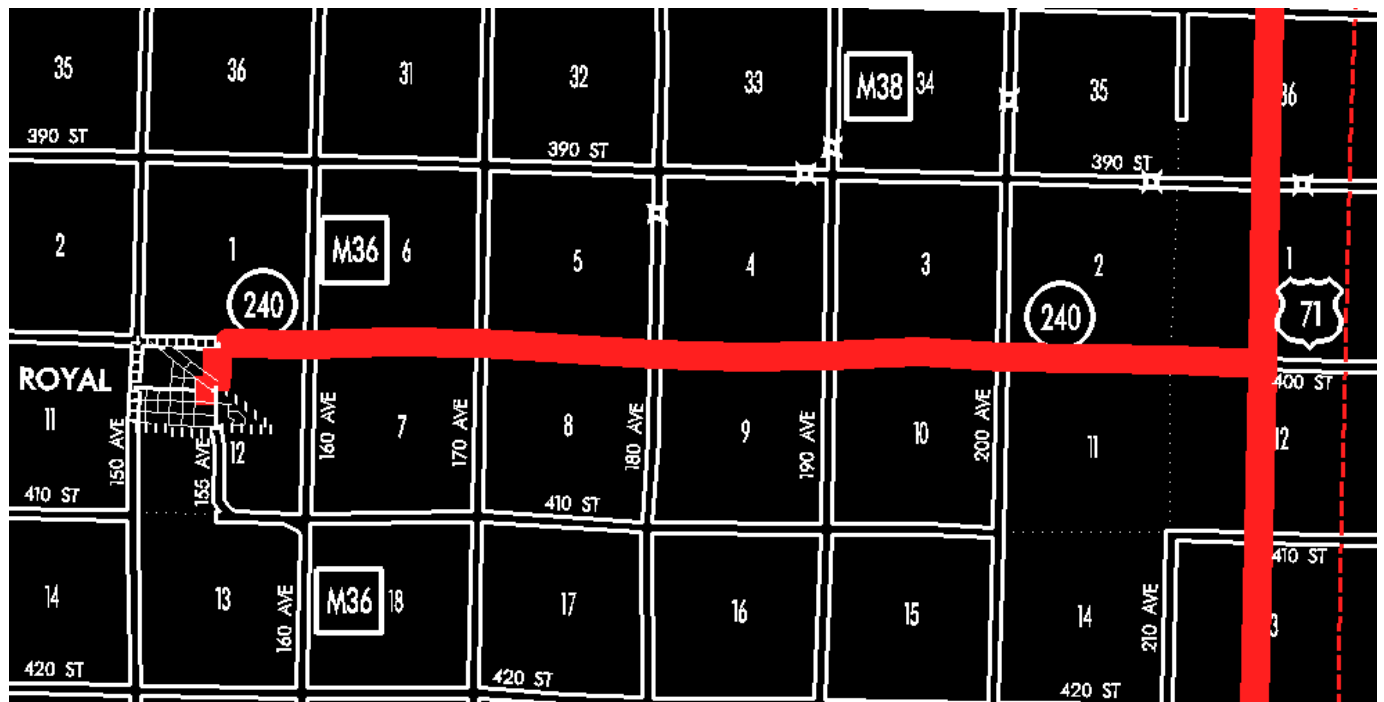
**EFFECTIVE DATE:** 07-01-2003

**ENTERED BY:** Stefani Wonders

**ENTERED DATE:** 08-31-2006

**DISCUSSION/BACKGROUND:**

Senate File 451 transferred Iowa 240 in its entirety, in Clay County, to city and county jurisdiction on July 1, 2003.



**OFFICIAL DESCRIPTION CHANGE**

**COUNTY:** Clay

**ROUTE:** Iowa 240

**STAFF ACTION NUMBER:** S-87-712

**APPROVAL DATE:** 12-18-86

New Description – Iowa 240 and its extensions in Clay County described as follows:

Royal:

Beginning at the intersection of Second Avenue and Main Street; thence easterly on Main Street to 1st Avenue; thence northerly and easterly on 1st Avenue to the east corporation line.

Beginning on the east corporation line of Royal, connecting with 1st Avenue; thence east following substantially the section line of Section 12–T95N–R38W and Sections 7, 8, 9, 10, 11, and 12–T95N–R37W to a point near the N  $\frac{1}{4}$  Corner of Section 12–T95N–R37W (junction of US 71).

#### **COMMISSION ORDER**

**DIVISION:** Planning & Research

**COMMISSION ORDER NUMBER:** PR–79–272

**SUBMITTED BY:** C.I. MacGillivray

**MEETING DATE:** 11–2–78

#### **DISCUSSION/BACKGROUND:**

Due to the review of our Primary Road System records, Iowa 240 in Clay County should be deleted from the Primary System and the new description added should be officially included into the Primary Road System.

Iowa 240 begins in Royal, Iowa and travels easterly terminating at the junction of US 71 approximately 3 miles south of Spencer, Iowa.

#### **PROPOSAL/ACTION RECOMMENDATION:**

Locate Iowa 240 and its extension in Clay County as follows:

Royal:

Beginning at the intersection of Second Avenue and an unnamed street; thence easterly and northerly to the north corporation line connecting with an unnamed street.

Beginning on the north corporation line of the City of Royal, connecting with an unnamed street; thence east following substantially the section line of Section 12-T93N-R38W and Sections 7, 8, 9, 10, 11, and 12-T95N-R37W to a point near the N ¼ Corner of Section 12-T95N-R37W (junction of US 71).

NOW, THEREFORE: Be it resolved that the Iowa Department of Transportation approve the location of Iowa 240 in Clay County, Iowa.

NOTE: To become affective upon the adoption of this resolution.

REVISED: 12-18-86

**COMMISSION ORDER**

**DIVISION:** Planning & Research

**SUBMITTED BY:** Raymond L. Kassel

**MEETING DATE:** 9-21-76

**DISCUSSION/BACKGROUND:**

Due to the review of our Primary Road System records, Iowa 240 in Clay County should be deleted from the Primary System and the new description added should be officially included into the Primary Road System.

Iowa 240 begins in Royal, Iowa and travels easterly terminating at the junction of US 71 approximately 3 miles south of Spencer, Iowa.

**PROPOSAL/ACTION RECOMMENDATION:**

Locate Iowa 240 and its extension in Clay County as follows:

Royal:

Beginning at the intersection of Second Avenue and an unnamed street; thence easterly and northerly to the north corporation line connecting with an unnamed street.

Beginning on the north corporation line of the City of Royal, connecting with an unnamed street; thence east following substantially the section line of Section 12-T95N-R38W and Sections 7, 8, 9, 10, 11, and 12-T95N-R37W to a point near the N ¼ Corner of Section 12-T95N-R37W (junction of US 71).

**NOW, THEREFORE:** Be it resolved that the Iowa Department of Transportation approve the location of Iowa 240 in Clay County, Iowa.

NOTE: To become effective upon the adoption of this resolution.

**OFFICIAL DESCRIPTION CHANGE**

**COUNTY:** Clay

**CITY OF:** Royal

**ROUTE:** Iowa 240

**APPROVAL DATE:** 8-6-69

Beginning on Main Street at the west line of Second Avenue; thence easterly on Main Street to First Avenue; thence northerly on First Avenue to the north corporation line.

**COMMISSION RESOLUTION**

**DIVISION:** Planning & Research

**COMMISSION ORDER NUMBER:** 69-1077

**SUBMITTED BY:** Raymond L. Kassel

**MEETING DATE:** 8-6-69

Remove Iowa 240 in Royal, Clay County as follows:

Beginning on Main Street at the west line of Fourth Avenue; thence east on Main Street to the west line of Second Avenue.

NOW THEREFORE: Be it resolved that the Iowa State Highway Commission approve the revision of Iowa 240 in Royal, Clay County.

**OFFICIAL DESCRIPTION CHANGE**

**COUNTY:** Clay

**CITY OF:** Royal

**ROUTE:** Iowa 240

**APPROVAL DATE:** 4-6-60

Beginning on Main Street at the west line of Second Avenue; thence easterly on Main Street to First Avenue; thence northerly on First Avenue to the north corporation line.

**OFFICIAL DESCRIPTION CHANGE**

**COUNTY:** Clay

**ROUTE:** Iowa 240

**APPROVAL DATE:** 4-14-37

Beginning on the north corporation line of the Town of Royal, connecting with First Avenue; thence east following substantially the section line to a point near the N  $\frac{1}{4}$  Corner of Section 12-T95N-R37W.