

OFFICIAL DESCRIPTION CHANGE

OFFICE: Transportation Data

EFFECTIVE DATE: 07-01-2003

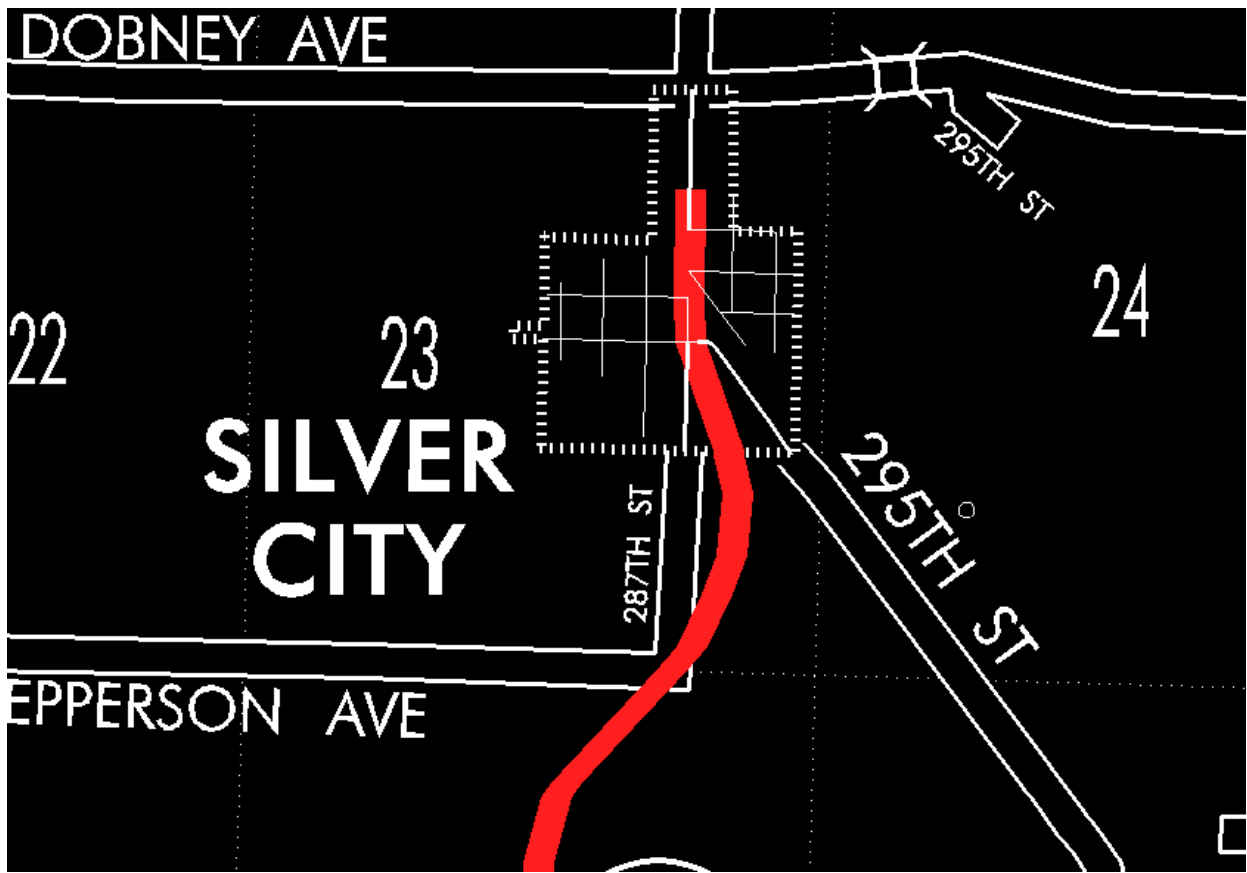
ENTERED BY: Stefani Wonders

ENTERED DATE: 08-21-2006

DISCUSSION/BACKGROUND:

Senate File 451 transferred Iowa 242 in its entirety, in Mills County, to city and county jurisdiction on July 1, 2003.





OFFICIAL DESCRIPTION CHANGE

COUNTY: Mills

ROUTE: Iowa 242

STAFF ACTION NUMBER: S-87-1530

APPROVAL DATE: 5-13-87

New Description: Iowa 242 and its extension in Mills County described as follows:

Beginning at a point near the S $\frac{1}{4}$ Corner Section 14-T72N-R42W (junction US 34); thence north following substantially the center section line of Sections 14, 11, and 2-T72N-R42W and Sections 35 and 26-T72N-R42W to a point approximately 700 feet north of center of

Section 26–T73N–R42W; thence in a northeasterly and northerly direction through Sections 26 and 23–T73N–R42W to the south corporation line of Silver City, connecting with an unnamed street.

Silver City:

Beginning on an unnamed street at the south corporation line; thence northwesterly on said unnamed street to Main Street; thence north on Main Street to Park Street.

COMMISSION ORDER

DIVISION: Planning & Research

COMMISSION ORDER NUMBER: PR–79–272

SUBMITTED BY: Raymond L. Kassel

MEETING DATE: 11–2–78

DISCUSSION/BACKGROUND:

Due to a review of our Primary Road System records, Iowa 242 in Mills County should be deleted from the Primary Road System and the new description added should be officially included into the Primary Road System.

Iowa 242 begins at US 34 approximately 4 ½ miles east of Glenwood and travels in a northerly direction approximately 5 ¾ miles terminating in Silver City, Iowa.

PROPOSAL/ACTION RECOMMENDATION:

Locate Iowa 242 and its extension in Mills County, Iowa, as follows:

Beginning at a point near the S ¼ Corner Section 14-T72N-R42W (junction US 34); thence north following substantially the center section line of Sections 14, 11, and 2-T72N-R42W and Sections 35 and 26-T72N-R42W to a point approximately 700 feet north of center of Section 26-T73N-R42W; thence in a northeasterly and northerly direction through Sections 26 and 23-T73N-R42W to the south corporation line of the City of Silver City, connecting with an unnamed street.

Silver City:

Beginning on the south corporation line connecting with an unnamed street; thence in a northwesterly and northerly direction to Park Street.

NOW, THEREFORE: Be it resolved that the Iowa Department of Transportation approve the location of Iowa 242, Mills County, Iowa.

NOTE: To become effective upon the adoption of this resolution.

REVISED: 5-13-87

OFFICIAL DESCRIPTION CHANGE

COUNTY: Mills

ROUTE: Iowa 242

APPROVAL DATE: 5-29-63

Beginning at a point near the S ¼ Corner Section 14-T72N-R42W; thence north following substantially the quarter section line to a point approximately 700 feet north of the center of Section 26-73N-R42W; thence in a northeasterly and northerly direction through Sections 26 and 23-T73N-R42W to the south corporation line of the Town of Silver City, connecting with an unnamed street.

OFFICIAL DESCRIPTION CHANGE

COUNTY: Mills

CITY OF: Silver City

ROUTE: Iowa 242

APPROVAL DATE: 5-5-42

Commencing on Main Street at a point 423 feet north of the north line of First Street, which is 50 feet north of an unnamed street; thence south along Main Street to the north line of Second Street; thence southeasterly along an unnamed street to the south corporation line.