

**OFFICIAL DESCRIPTION CHANGE**

**OFFICE:** Transportation Data

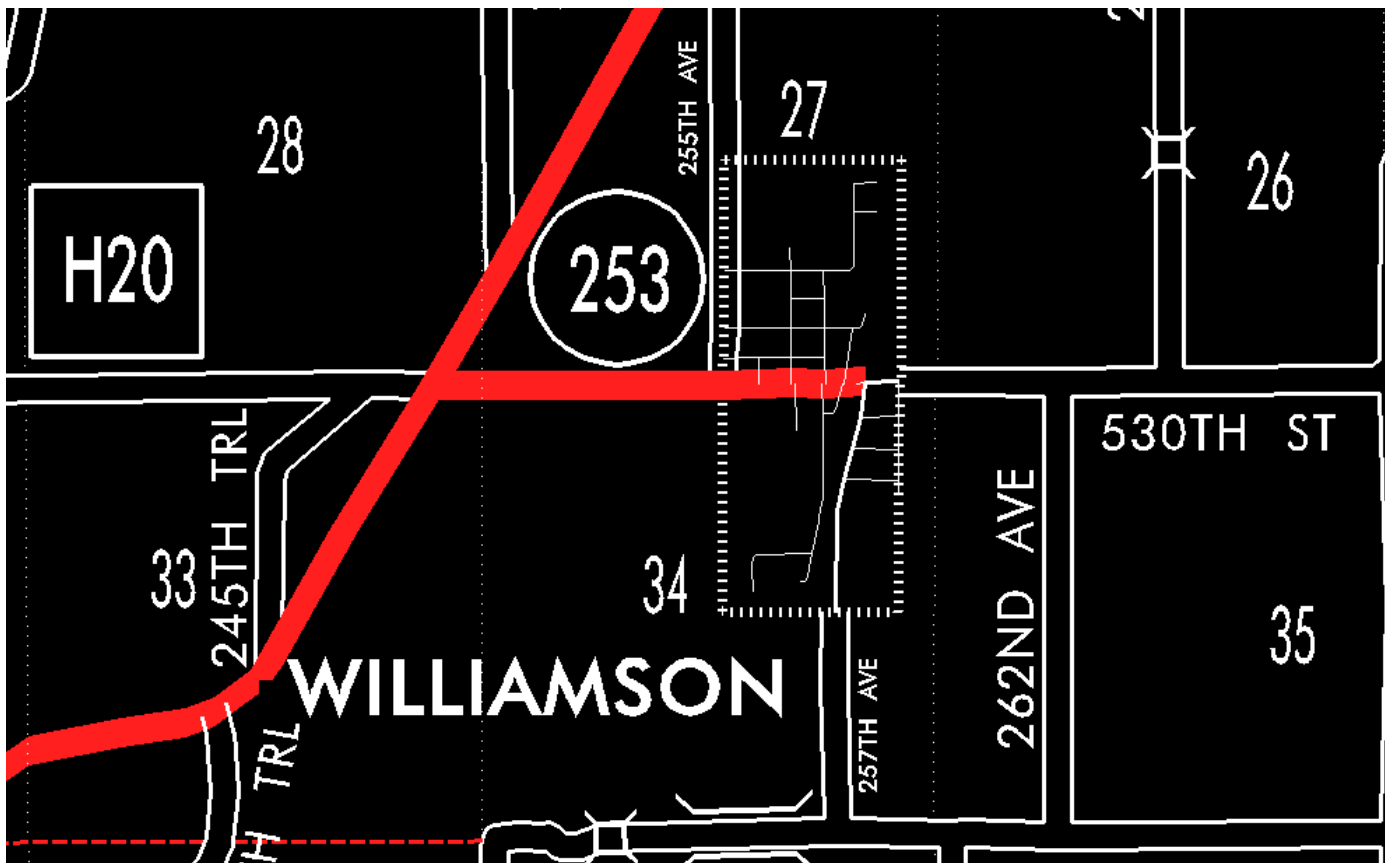
**EFFECTIVE DATE:** 07-01-2003

**ENTERED BY:** Stefani Wonders

**ENTERED DATE:** 08-22-2006

**DISCUSSION/BACKGROUND:**

Senate File 451 transferred Iowa 253 in its entirety, in Lucas County, to city and county jurisdiction on July 1, 2003.



**COMMISSION ORDER**

**DIVISION:** Planning & Research

**COMMISSION ORDER NUMBER:** PR-79-272

**SUBMITTED BY:** C.I. MacGillivray

**MEETING DATE:** 11-2-78

**DISCUSSION/BACKGROUND:**

Due to a review of our Primary Road System records, Iowa 253 in Lucas County should be deleted from the Primary Road System and the new description added should be officially included into the Primary Road System.

Iowa 253 begins at the junction Iowa 14 approximately  $\frac{3}{4}$  mile west of Williamson traveling easterly terminating in the City of Williamson, Iowa.

**PROPOSAL/ACTION RECOMMENDATION:**

Locate Iowa 253 and its extension in Lucas County as follows:

Beginning at a point approximately 800 feet west of the NE Corner Section 23-T73N-R21W (junction Iowa 14); thence east following substantially the section line of Section 33 and 34-T73N-R21W to the west corporation line of the City of Williamson, connecting with an unnamed street.

Williams:

Beginning at the west corporation line connecting with an unnamed street; thence easterly to the Chicago, Rock Island, and Pacific Railway tracks.

NOW, THEREFORE: Be it resolved that the Iowa Department of Transportation approve the location of Iowa 253, Lucas County, Iowa.

NOTE: To become effective upon the adoption of this resolution.

**OFFICIAL DESCRIPTION CHANGE**

**COUNTY:** Lucas

**CITY OF:** Williamson

**ROUTE:** Iowa 253

**APPROVAL DATE:** 12-1-42

Commencing on South Street at the west corporation line; thence easterly along South Street approximately 1568 feet to the Chicago, Rock Island & Pacific Railroad tracks.

**OFFICIAL DESCRIPTION CHANGE**

**COUNTY:** Lucas

**ROUTE:** Iowa 253

**APPROVAL DATE:** 4-14-37

Beginning at a point approximately 800 feet west of the NE Corner Section 33-T73N-R21W; thence east following substantially the section line to the west corporation line of the Town of Williamson, connecting with South Street.