

OFFICIAL DESCRIPTION CHANGE

OFFICE: Transportation Data

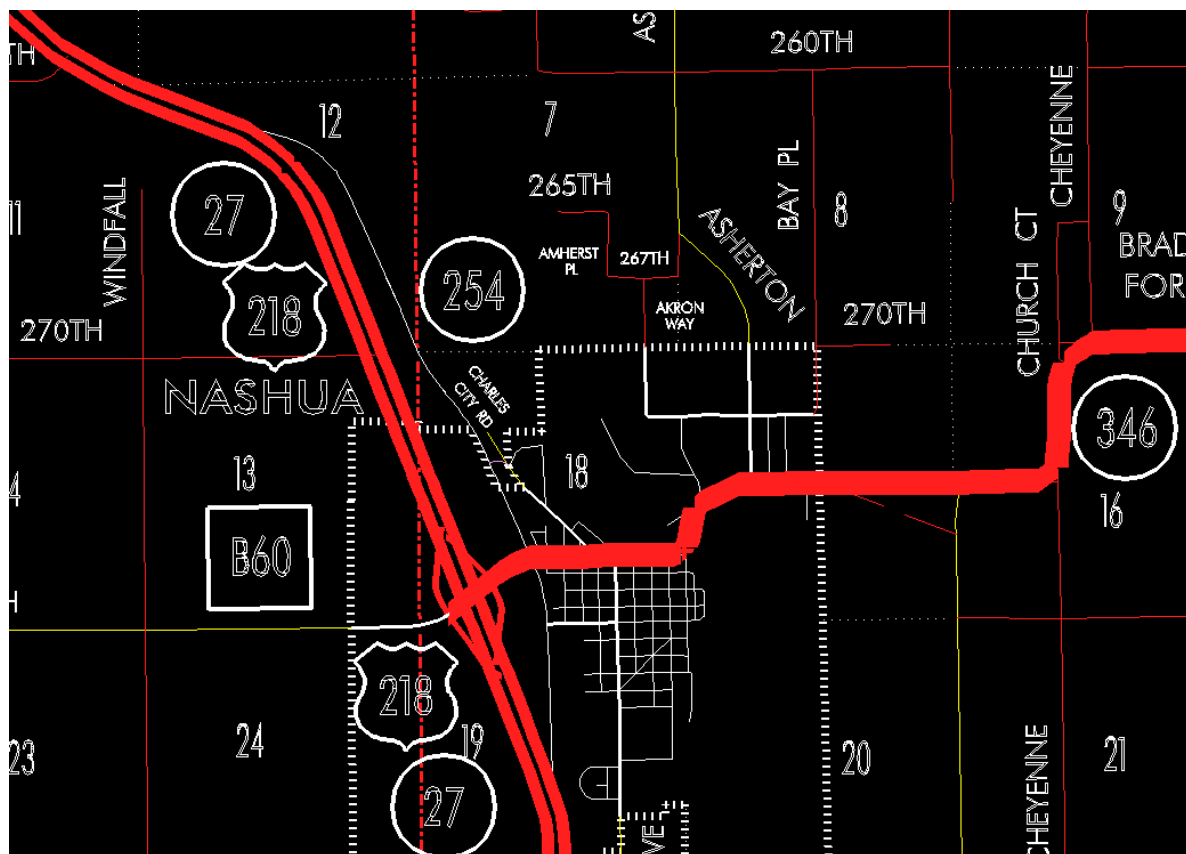
EFFECTIVE DATE: 11-1-2004

ENTERED BY: Stefani Wonders

ENTERED DATE: 02-08-2005

DISCUSSION/BACKGROUND:

Transfer of jurisdiction agreement number 2002-TJ-004, between Chickasaw County and the Iowa Department of Transportation, transferred that portion of Unsigned Iowa 254 from the north corporation line of Nashua (approximately 2600 feet south and 1590 feet east of the NW Corner of Section 18-T94N-R14W); thence northeasterly through Sections 18 and 12-T94N-R14W to the Chickasaw-Floyd County line at a point near the NW Corner of Section 18-T94N-R14W, Chickasaw County (SE Corner of Section 12-T94N-R15W, Floyd County) to county jurisdiction on November 1, 2004.

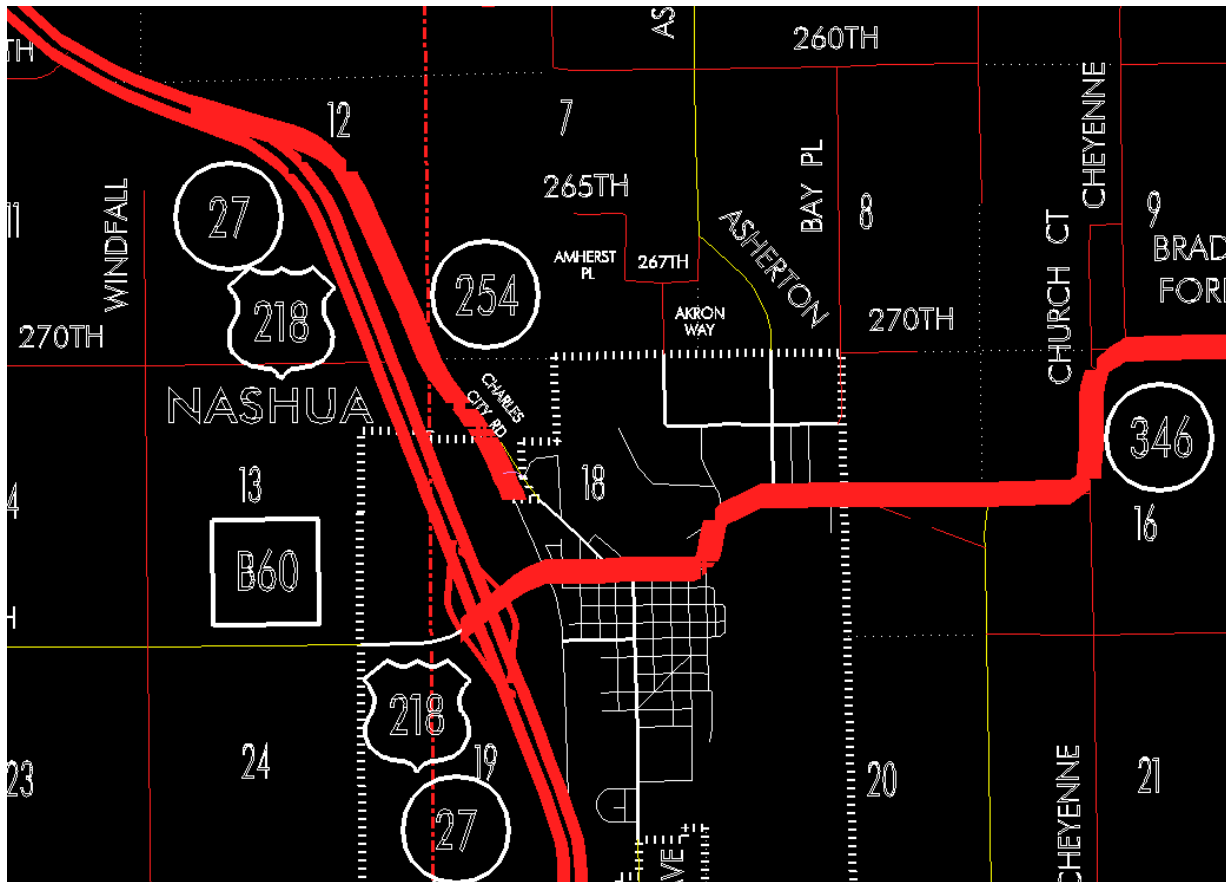


OFFICIAL DESCRIPTION CHANGE**OFFICE:** Transportation Data**EFFECTIVE DATE:** 02-02-2004**ENTERED BY:** Stefani Wonders**ENTERED DATE:** 02-08-2005**DISCUSSION/BACKGROUND:**

Transfer of jurisdiction agreement number 2001-4-217, between the City of Nashua and the Iowa Department of Transportation, transferred that portion of Unsigned Iowa 254 from a point approximately 2570 feet north and 2520 feet east of the SW Corner of Section 19-T94N-R14W; thence in a northwesterly direction through Sections 19 and 18-T94N-R14W to the north corporation line (approximately 2600 feet south and 1590 feet east of the NW Corner of Section 18-T94N-R14W) to city jurisdiction on February 2, 2004.

New Description – Unsigned Iowa 254 and its extensions in Chickasaw County described as follows:

Beginning on the north corporation line of Nashua (approximately 2600 feet south and 1590 feet east of the NW Corner of Section 18-T94N-R14W); thence northeasterly through Sections 18 and 12-T94N-R14W to the Chickasaw-Floyd County line at a point near the NW Corner of Section 18-T94N-R14W, Chickasaw County (SE Corner of Section 12-T94N-R15W, Floyd County).



OFFICIAL DESCRIPTION CHANGE

OFFICE: Transportation Data

EFFECTIVE DATE: 01-19-2004

ENTERED BY: Stefani Wonders

ENTERED DATE: 02-08-2005

DISCUSSION/BACKGROUND:

New Description - Unsigned Iowa 254 and its extensions in Chickasaw County described as follows:

Nashua:

Beginning at a point approximately 2570 feet north and 2520 feet east of the SW Corner of Section 19-T94N-R14W; thence in a northwesterly direction

through Sections 19 and 18-T94N-R14W to the north corporation line (approximately 2600 feet south and 1590 feet east of the NW Corner of Section 18-T94N-R14W).

Beginning again on the north corporation line of Nashua; thence northeasterly through Sections 18 and 12-T94N-R14W to the Chickasaw-Floyd County line at a point near the NW Corner of Section 18-T94N-R14W, Chickasaw County (SE Corner of Section 12-T94N-R15W, Floyd County).

