

**OFFICIAL DESCRIPTION CHANGE**

**OFFICE:** Transportation Data

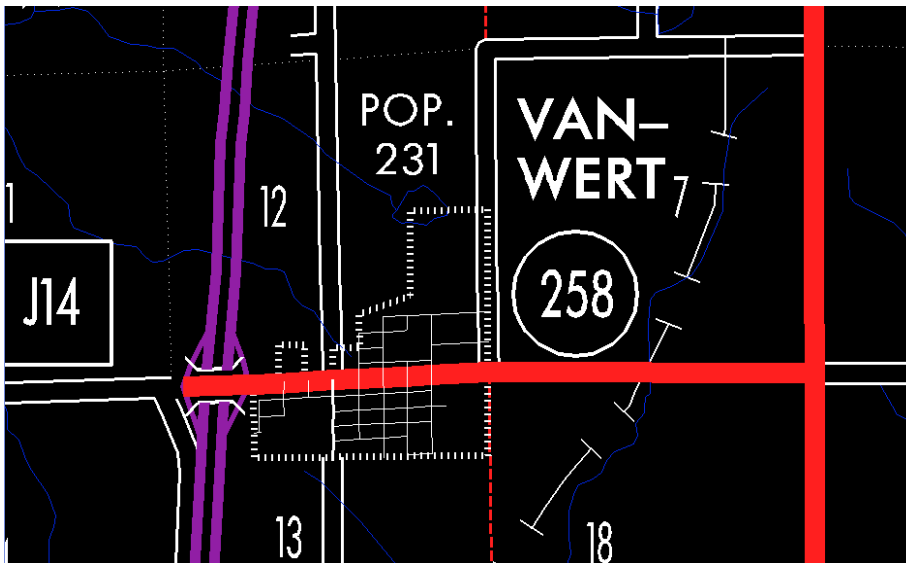
**EFFECTIVE DATE:** 07-01-2003

**ENTERED BY:** Stefani Wonders

**ENTERED DATE:** 08-21-2006

**DISCUSSION/BACKGROUND:**

Senate File 451 transferred Iowa 258 in its entirety, in Decatur County, to city and county jurisdiction on July 1, 2003.



**OFFICIAL DESCRIPTION CHANGE**

**COUNTY:** Decatur

**ROUTE:** Iowa 258

**STAFF ACTION NUMBER:** S-87-706

**APPROVAL DATE:** 12-18-86

New Description – Iowa 258 and its extension in Decatur County described as follows:

Beginning at a point near the NW Corner Section 13-T70N-R26W (junction Interstate 35); thence east following substantially the section line said Section 13 to the west corporation line of Van Wert, connecting with Line Street.

Van Wert:

Beginning on Line Street at the west corporation line; thence east on Line Street to the east corporation line.

Beginning again on the east corporation line connecting with Line Street; thence east following substantially the section line of Section 13-T70N-R26W to the west corporation line of Van Wert connecting with Line Street.

Van Wert:

Beginning on Line Street at the west corporation line; thence east on Line Street to the east corporation line.

Beginning again on the east corporation line of Van Wert connecting with Line Street; thence east following substantially the section line of Section 18-T70N-R25W to a point near the NE Corner Section 18-T70N-R25W (junction US 69).

**COMMISSION ORDER**

**DIVISION:** Planning & Research

**COMMISSION ORDER NUMBER:** PR-79-272

**SUBMITTED BY:** C.I. MacGillivray

**MEETING DATE:** 11-2-78

**DISCUSSION/BACKGROUND:**

Due to a review of our Primary Road System Records, Iowa 258 in Decatur County should be deleted and the new description added should be officially included into the Primary System.

**PROPOSAL/ACTION RECOMMENDATION:**

It is recommended that the old description of Iowa 258 in Decatur County be deleted and the new description, as referred in the attached detailed description, be included in the Primary Road System effective upon the adoption of this resolution.

Locate Iowa 258 and its extension in Decatur County as follows:

Beginning at a point near the NW Corner Section 13–T70N–R26W (junction Interstate 35); thence east following substantially the section line said Section 13 to the west corporation line of the City of Van Wert, connecting with an unnamed street.

Van Wert:

Beginning on the west corporation line connecting with an unnamed street; thence easterly to the east corporation line connecting with an unnamed street.

Beginning again on the east corporation line of the City of Van Wert, connecting with an unnamed street; thence east following substantially the section line of Section 13–T70N–R26W to the west corporation line of the City of Van Wert, connecting with an unnamed street.

Van Wert:

Beginning on the west corporation line connecting with an unnamed street; thence easterly to the east corporation line connecting with an unnamed street.

Beginning again on the east corporation line of the City of Van Wert connecting with an unnamed street; thence east following substantially the section line of Section 18-T70N-R25W to a point near the NE Corner Section 18-T70N-R25W (junction US 69).

REVISED: 12-18-86

**COMMISSION ORDER**

**DIVISION:** Planning & Research

**COMMISSION ORDER NUMBER:** 73-1390

**SUBMITTED BY:** Gene R. Mills

**MEETING DATE:** 11-7-73

Locate Iowa 258 in Decatur County as follows:

Beginning at a point near the NW Corner Section 13-T70N-R26W (Interstate 35); thence east following substantially the section line to the west corporation line of Van Wert connecting with Line Street.

Beginning again on the east corporation line of the Town of Van Wert, connecting with Line Street; thence east following substantially the section line to a point near the NE Corner Section 18-T70N-R25W.

NOW, THEREFORE: Be it resolved that the Iowa State Highway Commission approve the location of Iowa 258 in Decatur County, Iowa.

NOTE: To become effective upon adoption of this resolution.

REVISED: 1978

**OFFICIAL DESCRIPTION CHANGE****COUNTY:** Decatur**ROUTE:** Iowa 258**APPROVAL DATE:** 3-6-69

Beginning at a point approximately 200 feet east of the SW Corner Section 12-T70N-R26W; thence east following substantially the section line to the west corporation line of Van Wert connecting with Line Street.

Van Wert:

Beginning on Line Street at the west corporation line; thence east on Line Street to the east corporation line.

Beginning again on the east corporation line of the Town of Van Wert, connecting with Line Street; thence east following substantially the section line to a point near the NE Corner Section 18-T70N-R25W.

**COMMISSION RESOLUTION****DIVISION:** Planning & Research**COMMISSION ORDER NUMBER:** 69-254**SUBMITTED BY:** Raymond L. Kassel**MEETING DATE:** 3-6-69

Locate Iowa 258 as follows:

Beginning at a point approximately 200 feet east of the SW Corner Section 12-T70N-R26W; thence east following substantially the section line to the west corporation line of the Town of Van Wert, connecting with Line Street.

NOW THEREFORE: Be it resolved that the Iowa State Highway Commission approve the revision of Iowa 258 in Decatur County, Iowa.

NOTE: To become effective upon adoption of this resolution.