

**OFFICIAL DESCRIPTION CHANGE**

**OFFICE:** Transportation Data

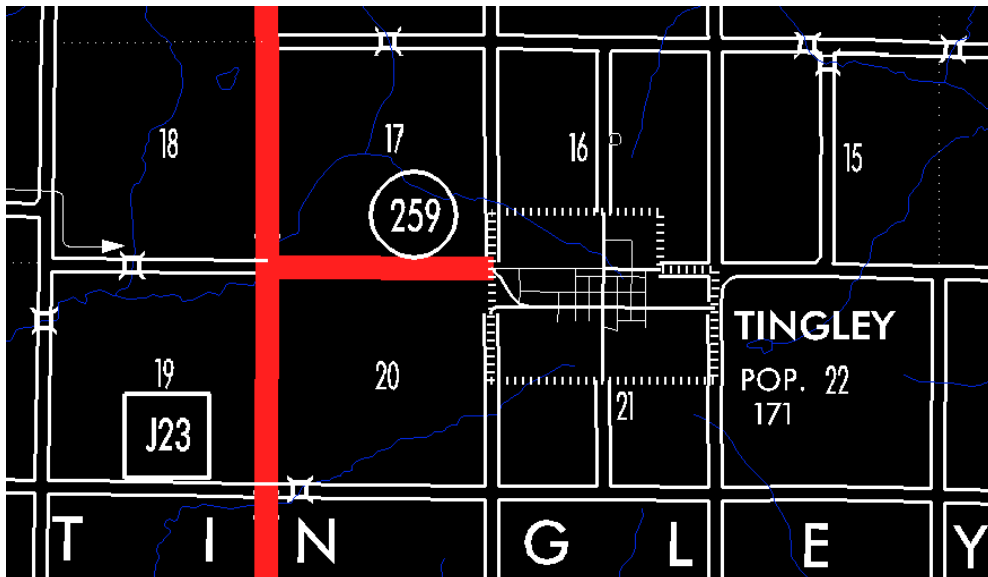
**EFFECTIVE DATE:** 07-01-2003

**ENTERED BY:** Stefani Wonders

**ENTERED DATE:** 08-21-2006

**DISCUSSION/BACKGROUND:**

Senate File 451 transferred Iowa 259 in its entirety, in Ringgold County, to county jurisdiction on July 1, 2003.

**COMMISSION ORDER**

**DIVISION:** Planning & Research

**COMMISSION ORDER NUMBER:** PR-82-465

**SUBMITTED BY:** Patrick R. Cain

**MEETING DATE:** 1-5-82

**TITLE:** Official Description Change: Iowa 259, Ringgold County

**DISCUSSION/BACKGROUND:**

Iowa 259 begins at U.S. 169 approximately one mile west of the City of Tingley, and travels easterly into the City of Tingley.

Transfer of jurisdiction agreement number TJ-259-0(3), between the City of Tingley and the Iowa Department of Transportation, transferred that portion of Iowa 259 from the west corporation line southeasterly and easterly to Adams Street to city jurisdiction on July 1, 1980.

**PROPOSAL/ACTION RECOMMENDATION:**

It is recommended the commission approve deleting the present description of Iowa 259 in Ringgold County from the primary road system and approve including the attached new description of Iowa 259 in the primary road system.

Locate Iowa 259 in Ringgold County as follows:

Beginning at a point near the NW Corner Section 20-T70N-R29W (junction US 169); thence easterly following substantially the section line of Section 20-T70N-R29W to the west corporation line of the City of Tingley connecting with an unnamed street.

**COMMISSION ORDER**

**DIVISION:** Planning & Research

**COMMISSION ORDER NUMBER:** PR-79-272

**SUBMITTED BY:** C.I. MacGillivray

**MEETING DATE:** 11-2-78

**TITLE:** Iowa 259, Ringgold County, Iowa

**DISCUSSION/BACKGROUND:**

Due to a review of our Primary Road System records, Iowa 259 in Ringgold County should be deleted and the new description added should be officially included into the Primary System.

Iowa 259 begins at US 169 approximately 1 mile west of Tingley and travels easterly, southeasterly and easterly to a point in Tingley, Iowa.

**PROPOSAL/ACTION RECOMMENDATION:**

Locate Iowa 259 and its extension in Ringgold County as follows:

Beginning at a point near the SW Corner Section 17-T70N-R29W (junction US 169); thence easterly following substantially the section line of Section 20-T70N-R29W to the west corporation line of the City of Tingley connecting with an unnamed street.

Tingley:

Beginning on the west corporation line and connecting with an unnamed street; thence in a southeasterly and easterly direction to Adams Street.

NOW, THEREFORE: Be it resolved that the Iowa Department of Transportation approve the location of Iowa 259 in Ringgold County, Iowa.

NOTE: To become effective upon the adoption of this resolution.

REVISED: 1-5-82

**OFFICIAL DESCRIPTION CHANGE**

**COUNTY:** Ringgold

**CITY OF:** Tingley

**ROUTE:** Iowa 259

**APPROVAL DATE:** 8-30-67

Beginning on an unnamed Street at the west corporation line at a point near the NW Corner Section 21-T70N-R29W; thence southeasterly on unnamed Street to Main Street; thence easterly on Main Street to the west line of Adams Street (Station 76+58+).

**OFFICIAL DESCRIPTION CHANGE**

**COUNTY:** Ringgold

**CITY OF:** Tingley

**ROUTE:** Iowa 259

**APPROVAL DATE:** 8-30-67

Beginning on an unnamed street at the west corporation line; thence southeasterly on unnamed street to Main Street; thence easterly on Main Street to the west line of Adams Street. (Station 76+58+)

**COMMISSION RESOLUTION**

**DIVISION:** Planning & Research

**COMMISSION ORDER NUMBER:** 67-1293

**SUBMITTED BY:** Raymond L. Kassel

**MEETING DATE:** 8-30-67

**TITLE:** Revising the location of Iowa 259 in Tingley, Ringgold County

Remove Iowa 259 in Tingley, Ringgold County, Iowa, as follows:

Beginning on Main Street at the west line of Adams Street (Station 76+58+); thence easterly on Main Street to Monroe Street.

NOTE: To become effective upon adoption of this resolution.

**OFFICIAL DESCRIPTION CHANGE**

**COUNTY:** Ringgold

**ROUTE:** Iowa 259

**APPROVAL DATE:** 9-15-37

Beginning at a point near the SW Corner Section 17-T70N-R29W; thence east following substantially the section line to the west corporation line of the town of Tingley, connecting with an unnamed street.