

OFFICIAL DESCRIPTION CHANGE

OFFICE: Transportation Data

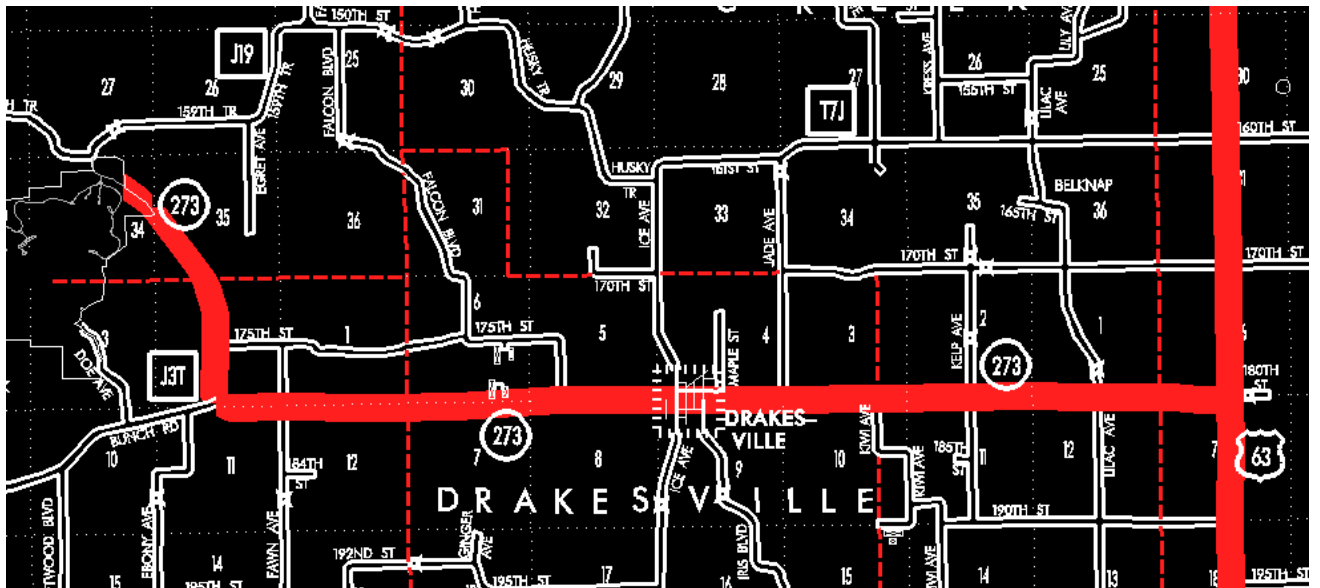
EFFECTIVE DATE: 07-01-2003

ENTERED BY: Stefani Wonders

ENTERED DATE: 08-21-2006

DISCUSSION/BACKGROUND:

Senate File 451 transferred Iowa 273 in its entirety, in Davis County, to city and county jurisdiction on July 1, 2003.



OFFICIAL DESCRIPTION CHANGE

COUNTY: Davis

ROUTE: Iowa 273

STAFF ACTION NUMBER: S-87-707

APPROVAL DATE: 12-18-86

New Description – Iowa 273 and its extension in Davis County described at follows:

Beginning at Lake Wapello State Park in the NE ¼ of Section 34-T70N--R15W; thence in a southeasterly direction through Sections 34 and 35-T70N-R15W and southerly through Section 2-T69N-R15W, to a point approximately ½ mile east of the SW Corner of Section 2-T69N-R15W; thence east through Sections 11 and 12-T69N-R15W and Sections 7, 6 and 5-T69N-R14W to the west corporation line of Drakesville, connecting with Main Street.

Drakesville:

Beginning on Main Street at the west corporation line; thence east on Main Street to the east corporation line.

Beginning again on the east corporation line of Drakesville connecting with Main Street; thence east following substantially the section line of Sections 9, 10, 11, and 12-T69N-R14W and Section 7-T69N-R13W to a point near the N ¼ Corner of Section 7-T69N-R13W (junction US 63).

COMMISSION ORDER

DIVISION: Planning & Research

COMMISSION ORDER NUMBER: PR-79-272

SUBMITTED BY: C. I. MacGillivray

MEETING DATE: 11-2-78

DISCUSSION/BACKGROUND:

Due to the review of our Primary Road System records, Iowa 273 in Davis County should be deleted from the Primary System and the new description added should be officially included into the Primary Road System.

Iowa 273 begins at the entrance of Lake Wapello approximately 5 ½ miles northwest of Drakesville, Iowa and travels southeasterly and easterly via Drakesville to the junction of US 63 approximately 4 miles north of Bloomfield, Iowa.

PROPOSAL/ACTION RECOMMENDATION:

Locate Iowa 273 and its extension in Davis County as follows:

Beginning at Lake Wapello State Park in the NE ¼ of Section 34-T70N-R15W; thence in a southeasterly direction through Sections 34 and 35-T70N-R15W and southerly through Section 2-T69N-R15W, to a point approximately ½ mile east of the SW Corner of Section 2-T69N-R15W; thence east through Sections 11 and 12-T69N-R15W and Sections 7, 6, and 5-T69N-R14W to the west corporation line of the City of Drakesville, connecting with an unnamed street.

Drakesville:

Beginning at the west corporation line connecting with an unnamed street; thence easterly to the east corporation line connecting with an unnamed street.

Beginning again on the east corporation line of the City of Drakesville connecting with an unnamed street; thence east following substantially the section line of Sections 9, 10, 11, and 12-T69N-R14W and Section 7-T69N-R13W to a point near the N ¼ Corner of Section 7-T69-R13W (junction US 63).

NOW, THEREFORE: Be it resolved that the Iowa Department of Transportation approve the location of Iowa 273 in Davis County, Iowa.

NOTE: To become effective upon the adoption of this resolution.

REVISED: 12-18-86

COMMISSION ORDER

DIVISION: Planning & Research

SUBMITTED BY: Raymond L. Kassel

MEETING DATE: 10-5-76

TITLE: Iowa 273, Davis County, Iowa

DISCUSSION/BACKGROUND:

Due to the review of our Primary Road System records, Iowa 273 in Davis County should be deleted from the Primary System and the new description added should be officially included into the Primary Road System.

Iowa 273 begins at the entrance of Lake Wapello approximately 5 ½ miles northwest of Drakesville, Iowa and travels southeasterly and easterly via Drakesville to the junction of US 63 approximately 4 miles north of Bloomfield, Iowa.

PROPOSAL/ACTION RECOMMENDATION:

Locate Iowa 273 and its extension in Davis County as follows:

Beginning at Lake Wapello State Park in the NE ¼ of Section 34-T70N-R15W; thence in a southeasterly direction through Sections 34 and 35-T70N-R15W and southerly through Section 2-T69N-R15W, to a point approximately ½ mile east of the SW Corner of Section 2-T69N-R15W; thence east following substantially the section line of Sections 11 and 12-T69N-R15W and Sections 7 and 8-T69N-R14W to the west corporation line of the City of Drakesville, connecting with an unnamed street.

Drakesville:

Beginning at the west corporation line connecting with an unnamed street; thence easterly to the east corporation line connecting with an unnamed street.

Beginning again on the east corporation line of the City of Drakesville connecting with an unnamed street; thence east following substantially the section line of Sections 9, 10, 11, and 12-T69N-R14W and Section 7-T69N-R13W to a point near the N ¼ Corner of Section 7-T69-R13W (junction US 63).

NOW, THEREFORE: Be it resolved that the Iowa Department of Transportation approve the location of Iowa 273 in Davis County, Iowa.

NOTE: To become effective upon the adoption of this resolution.

OFFICIAL DESCRIPTION CHANGE

COUNTY: Davis

CITY OF: Drakesville

ROUTE: Iowa 273

APPROVAL DATE: 11-8-49

Beginning at the west corporation line connecting with Main Street; thence east on Main Street to the east corporation line.

OFFICIAL DESCRIPTION CHANGE

COUNTY: Davis

ROUTE: Iowa 273

APPROVAL DATE: 5-15-46

Beginning at Lake Wapello State Park in the NE $\frac{1}{4}$ of Section 34-T70N-R15W; thence in a southeasterly direction through Section 34 and 35-T70N-R15W and southerly through Section 2-T69N-R15W to a point approximately $\frac{1}{2}$ mile east of the SW Corner of Section 2-T69N--R15W; thence east following substantially the section line to the west corporation line of the Town of Drakesville, connecting with Main Street.

Beginning again on the east corporation line of the Town of Drakesville, connecting with Main Street; thence east following substantially the section line to the N $\frac{1}{4}$ Corner of Section 7-T69N-R13W, intersecting US 63.