

**OFFICIAL DESCRIPTION CHANGE**

**OFFICE:** Transportation Data

**EFFECTIVE DATE:** 07-01-2003

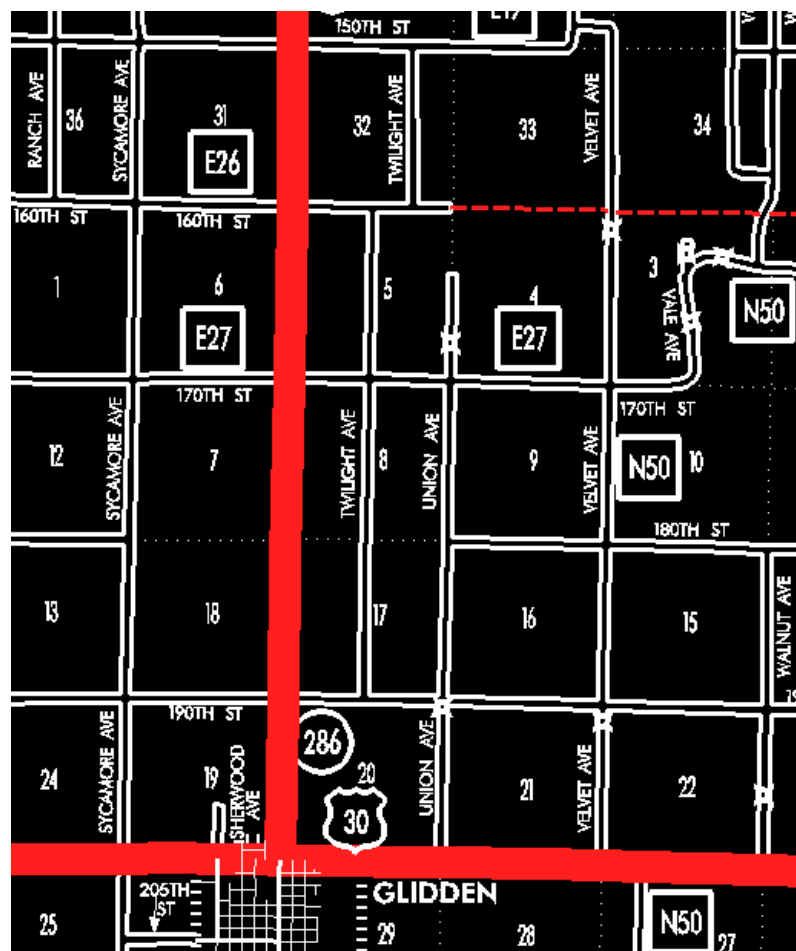
**ENTERED BY:** Stefani Wonders

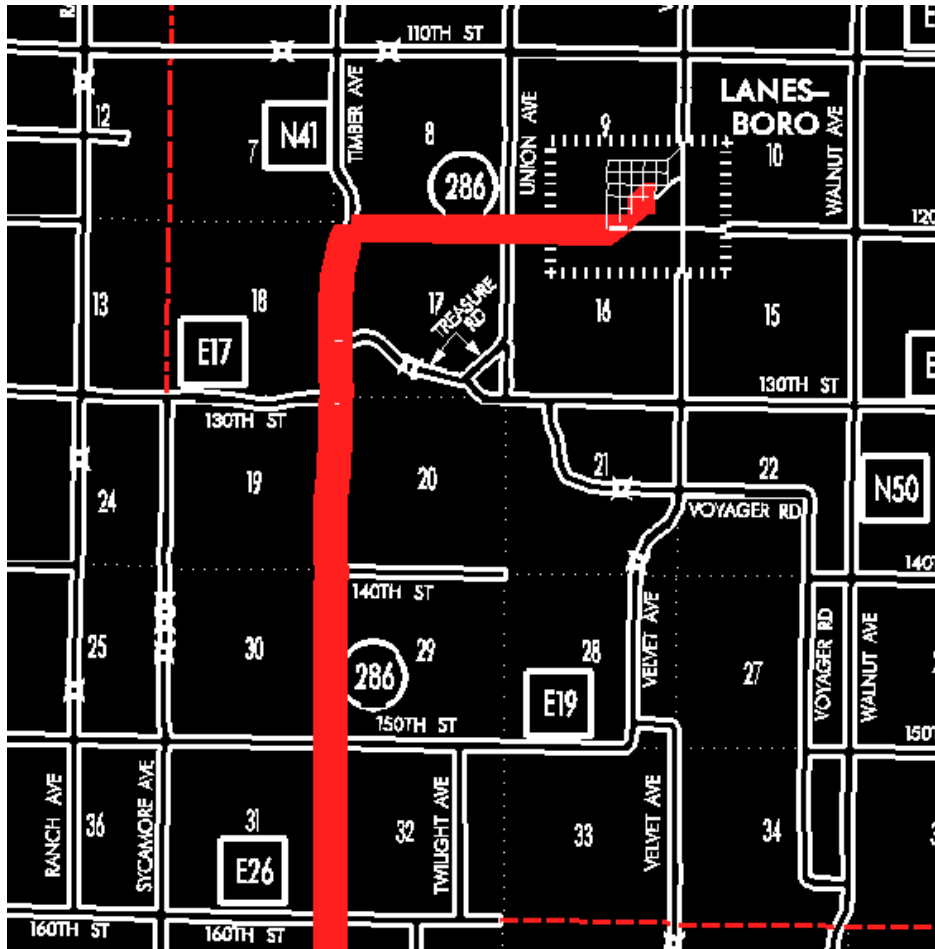
**ENTERED DATE:** 08-24-2006

**DISCUSSION/BACKGROUND:**

Senate File 451 transferred Iowa 286 in its entirety, in Carroll County, to city and county jurisdiction on July 1, 2003.







## OFFICAL DESCRIPTION CHANGE

COUNTY: Carroll

ROUTE: Iowa 286

STAFF ACTION NUMBER: S-87-702

APPROVAL DATE: 12-18-86

New description – Iowa 286 and its extension in Carroll County described as follows:

Beginning at a point near the SW Corner of Section 20–T84N–R33W (junction US 30); thence north following substantially the section line of Sections 20, 17, 8

and 5-T84N-R33W; and Sections 32, 29, 20, and 17-T85N-R33W; thence curving northeasterly and easterly through Sections 17 and 16-T85N-R33W to the west corporation limits of Lanesboro connecting with Willow Street.

Lanesboro:

Beginning on Willow Street at the west corporation line; thence east on Willow Street to Park Street; thence northeast on Park Street to Main Street; thence east on Main Street to 2nd Street.

#### **COMMISSION ORDER**

**DIVISION:** Planning & Research

**COMMISSION ORDER NUMBER:** PR-79-272

**SUBMITTED BY:** C.I. MacGillivray

**MEETING DATE:** 11-2-78

#### **DISCUSSION/BACKGROUND:**

Due to the review of our Primary Road System records, Iowa 286 in Carroll County should be deleted and the new description added should be officially included into the Primary Road System.

Iowa 286 begins at the north edge of Glidden and travels in a northerly direction, terminating at Lanesboro, 1½ miles south of the Carroll-Calhoun County line.

#### **PROPOSAL/ACTION RECOMMENDATION:**

Locate Iowa 286 and its extension in Carroll County as follows:

Beginning at a point near the SW Corner of Section 20-T84N-R33W (junction US 30); thence north following substantially the section line of Sections 20, 17, 8

and 5-T84N-R33W; and Sections 32, 29, 20, and 17-T85N-R33W; thence curving northeasterly and easterly through Sections 17 and 16-T85N-R33W to the west corporation limits of the City of Lanesboro connecting with an unnamed street.

Lanesboro:

Beginning on the west corporation line connecting with an unnamed street; thence easterly, northeasterly to Second Street.

NOW, THEREFORE: Be it resolved that the Iowa Department of Transportation approve the location of Iowa 236 in Carroll County, Iowa.

NOTE: To become effective upon adoption of this resolution.

REVISED: 12-18-86

#### **COMMISSION ORDER**

**DIVISION:** Planning & Research

**SUBMITTED BY:** Raymond L. Kassel

**MEETING DATE:** 9-7-76

#### **DISCUSSION/BACKGROUND:**

Due to the review of our Primary Road System records, Iowa 286 in Carroll County should be deleted and the new description added should be officially included into the Primary Road System.

Iowa 286 begins at the north edge of Glidden and travels in a northerly direction, terminating at Lanesboro, 1½ miles south of the Carroll-Calhoun County line.

## **PROPOSAL/ACTION RECOMMENDATION:**

Locate Iowa 286 and its extension in Carroll County as follows:

Beginning at a point near the SW Corner of Section 20–T84N–R33W (junction US 30); thence north following substantially the section line of Sections 20, 17, 8 and 5–T84N–R34W; and Sections 32, 29, 20, and 17–T85N–R34W; thence curving northeasterly and easterly through Sections 17 and 16–T85N–R33W to the west corporation limits of the City of Lanesboro connecting with an unnamed street.

Lanesboro:

Beginning on the west corporation line connecting with an unnamed street; thence easterly, northeasterly to Second Street.

NOW, THEREFORE: Be it resolved that the Iowa Department of Transportation approve the location of Iowa 286 in Carroll County, Iowa.

NOTE: To become effective upon adoption of this resolution.

## **OFFICIAL DESCRIPTION CHANGE**

**COUNTY:** Carroll

**CITY OF:** Lanesboro

**ROUTE:** Iowa 286

**APPROVAL DATE:** 5–5–42

Beginning on Willow Avenue at a point on the west corporation line; thence easterly on Willow Avenue to Park Street; thence northeasterly on Park Street to Main Street; thence easterly on Main Street approximately 375 feet to the east line of Second Street.

**OFFICAL DESCRIPTION CHANGE**

**COUNTY:** Carroll

**ROUTE:** Iowa 286

**APPROVAL DATE:** 4-14-37

Beginning at a point near the SW Corner of Section 20-T84N-R33W; thence north following substantially the section line to a point near the NW Corner of Section 17-T85N-R33W; thence east following substantially the section line to the west corporation line of the Town of Lanesboro connecting with Willow Avenue.