

OFFICIAL DESCRIPTION CHANGE

OFFICE: Transportation Data

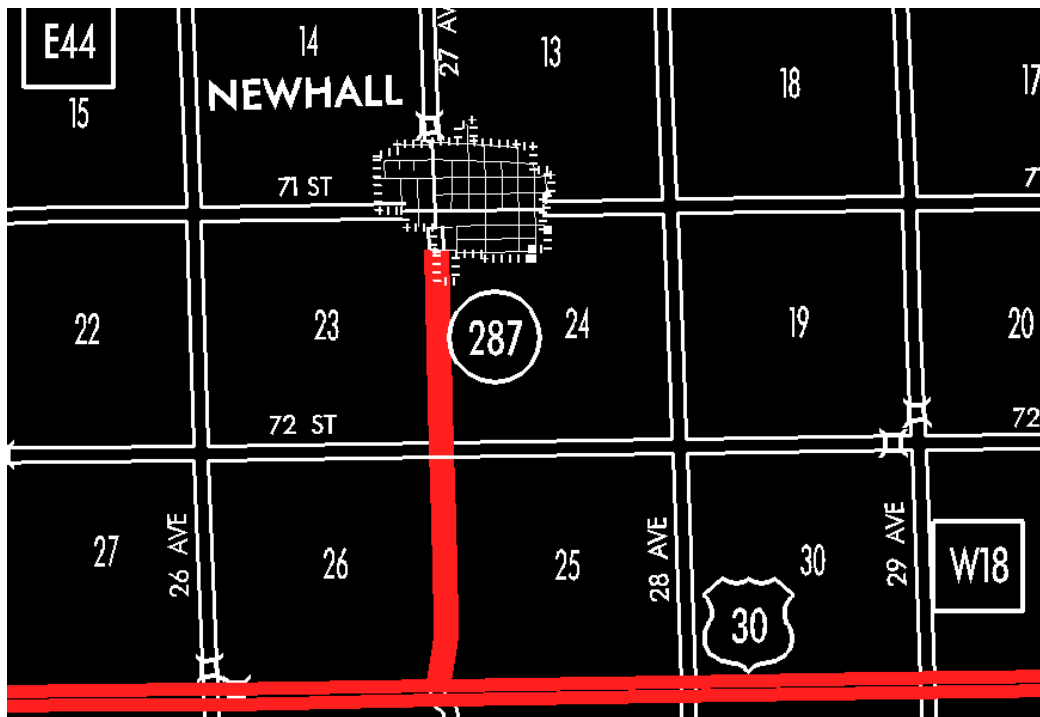
EFFECTIVE DATE: 07-01-2003

ENTERED BY: Stefani Wonders

ENTERED DATE: 08-24-2006

DISCUSSION/BACKGROUND:

Senate File 451 transferred Iowa 287 in its entirety, in Benton County, to county jurisdiction on July 1, 2003.



COMMISSION ORDER

DIVISION: Planning & Research

COMMISSION ORDER NUMBER: PR-82-439

SUBMITTED BY: Patrick R. Cain

MEETING DATE: 1-5-82

DISCUSSION/BACKGROUND:

Iowa 287 begins at US 30 and 218 approximately two miles south of the City of Newhall, and travels northerly into the City of Newhall.

Transfer of jurisdiction agreement number TJ-287-0 (2), between the City of Newhall and the Iowa Department of Transportation, transferred that portion of Iowa 287 in the City of Newhall from the south corporation line northerly, easterly and northerly to Railroad Street to city jurisdiction on July 1, 1980.

PROPOSAL/ACTION RECOMMENDATION:

It is recommended the commission approve deleting the present description of Iowa 287 in Benton County from the primary road system and approve including the attached new description of Iowa 287 in the primary road system.

Locate Iowa 287 in Benton County as follows:

Beginning at a point approximately 252 feet west of the SE Corner of Section 26-T83N-R10W (junction US 30 and 218); thence northerly through Sections 26, 25 and 24-T83N-R10W to the south corporation line of the City of Newhall, connecting with an unnamed street.

COMMISSION ORDER

DIVISION: Planning & Research

COMMISSION ORDER NUMBER: PR-79-272

SUBMITTED BY: C.I. MacGillivray

MEETING DATE: 11-2-78

DISCUSSION/BACKGROUND:

Due to a review of our Primary Road System records, Iowa 287 in Benton County, Iowa should be deleted and the new description added should be officially included into the Primary System.

Iowa 287 begins at the junction of US 30 and 218 approximately 2 miles south of Newhall and travels northerly into the City of Newhall.

PROPOSAL/ACTION RECOMMENDATION:

Locate Iowa 287 and its extension in Benton County as follows:

Beginning at a point approximately 252 feet west of the SW Corner of Section 25-T83N-R10W; thence in a northerly direction following substantially the section line of Sections 25 and 24 to the south section line of the City of Newhall connecting with an unnamed street.

Newhall:

Beginning at an unnamed street at the south corporation line of Newhall; thence northerly, easterly; thence northerly to Railroad Street.

NOW, THEREFORE: Be it resolved that the Iowa Department of Transportation approve the location of Iowa 287 in Benton County, Iowa.

NOTE: To become effective upon the adoption of this resolution.

REVISED: 1-5-82

COMMISSION ORDER

DIVISION: Planning & Research

SUBMITTED BY: Raymond L. Kassel

MEETING DATE: 8-10-76

DISCUSSION/BACKGROUND:

Due to a review of our Primary Road System records, Iowa 287 in Benton County, Iowa should be deleted and the new description added should be officially included into the Primary System.

Iowa 287 begins at the junction of US 30 and 218 approximately 2 miles south of Newhall and travels northerly into the City of Newhall.

PROPOSAL/ACTION RECOMMENDATION:

Locate Iowa 287 and its extensions in Benton County as follows:

Beginning at a point approximately 252 feet west of the SW Corner of Section 25-T83N-R10W; thence in a northerly direction following substantially the section line of Sections 25 and 24 to the south section line of the City of Newhall connecting with an unnamed street.

Newhall:

Beginning at an unnamed street at the south corporation line of Newhall; thence northerly, easterly; thence northerly to Railroad Street.

NOW, THEREFORE: Be it resolved that the Iowa Department of Transportation approve the location of Iowa 287 in Benton County, Iowa.

NOTE: To become effective upon the adoption of this resolution.

OFFICIAL DESCRIPTION CHANGE

COUNTY: Benton

ROUTE: Iowa 287

APPROVAL DATE: 11-23-65

Beginning at a point approximately 252 feet west of the SW Corner of Section 25-T83N-R10W; thence in a northerly direction to a point approximately 1080 feet south of the W $\frac{1}{4}$ Corner of Section 25-T83N-R10W; thence north following substantially the section line to the south corporation line of the Town of Newhall connecting with First Avenue.

Newhall:

Commencing on First Avenue at the south corporation line; thence north on First Avenue to Third Street; thence east on Third Street to Main Street; thence north on Main Street to Railroad Street.

REVISED: 12-18-86