

OFFICIAL DESCRIPTION CHANGE

OFFICE: Transportation Data

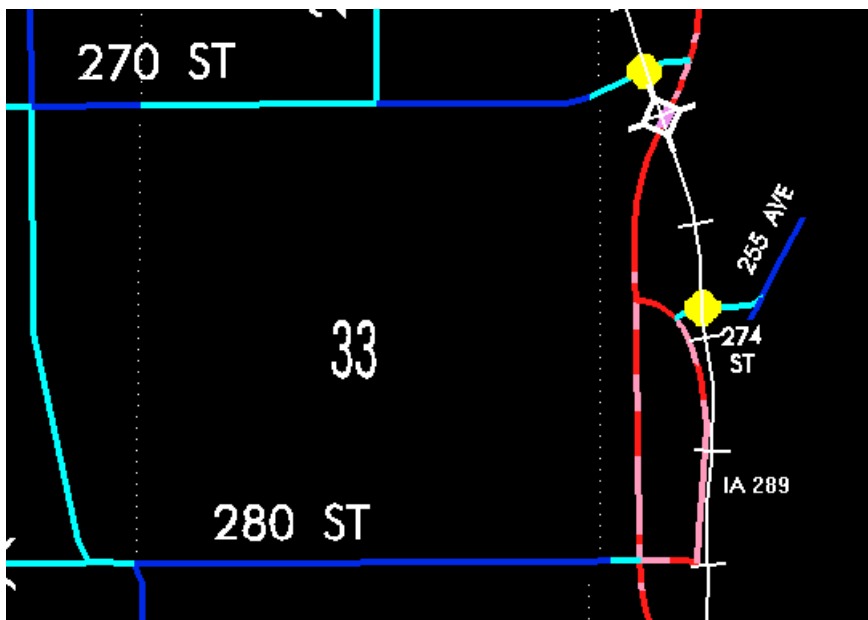
EFFECTIVE DATE: 6-6-2003

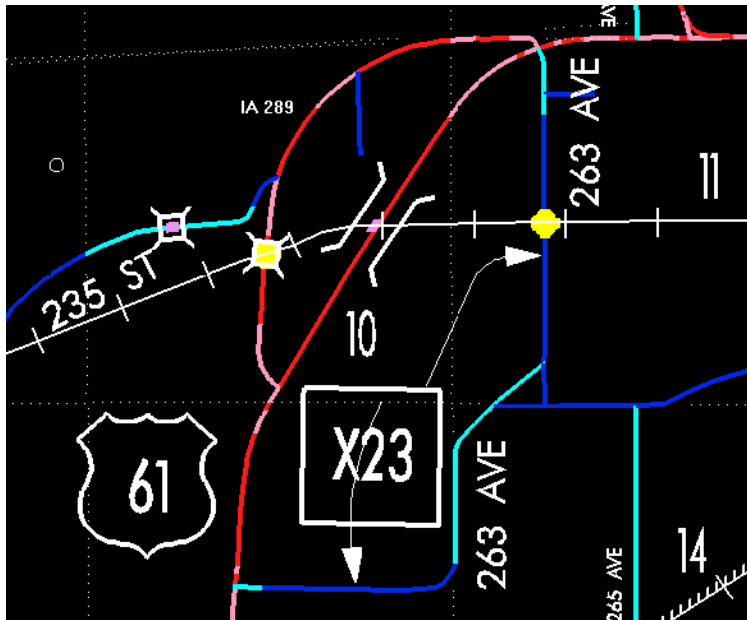
ENTERED BY: Stefani Wonders

ENTERED DATE: 01-05-2004

DISCUSSION/BACKGROUND:

Transfer of jurisdiction agreement number 2003-TJ-007, between Lee County and the Iowa Department of Transportation, transferred that portion of Unsigned Iowa 289 from the south junction US 61 (approximately 570 feet east of the NW Corner Section 3-T66N-R5W); thence east approximately 720 feet following substantially the section line of Section 3-T66N-R5W; thence north and northwest through Section 34-T67N-R5W to north junction US 61 (approximately 3070 feet north and 380 feet east of NW Corner Section 3-T66N-R5W); again at the south junction US 61 (a point near the S $\frac{1}{4}$ Corner Section 10-T67N-R5W); thence northwest, north, northeast, and east through Sections 10 and 11-T67N-R5W to the north junction US 61 (approximately 1230 feet east and 120 feet south of the NE Corner Section 11-T67N-R5W) to county jurisdiction on June 6, 2003.





STAFF ACTION

OFFICE: Transportation Inventory

STAFF ACTION NUMBER: S-02-0009

SUBMITTED BY: Patrick R. Cain

SUBMITTAL DATE: 07-02-2001

DISCUSSION/BACKGROUND:

New Description – Unsigned Iowa 289 and its extensions in Lee County described as follows:

Beginning at the south junction US 61 (approximately 570 feet east of the NW Corner Section 3-T66N-R5W); thence east approximately 720 feet following substantially the section line of Section 3-T66N-R5W; thence north and northwest through Section 34-T67N-R5W to north junction US 61 (approximately 3070 feet north and 380 feet east of NW Corner Section 3-T66N-R5W).

Beginning again at the south junction US 61 (a point near the S ¼ Corner Section 10-T67N-R5W); thence northwest, north, northeast, and east through Sections 10 and 11-T67N-R5W to the north junction US 61 (approximately 1230 feet east and 120 feet south of the NE Corner Section 11-T67N-R5W).

PROPOSAL/ACTION RECOMMENDATION:

It is recommended to approve adding the description of Unsigned Iowa 289 in Lee County to the Primary Road System.