

OFFICIAL DESCRIPTION CHANGE

OFFICE: Transportation Data

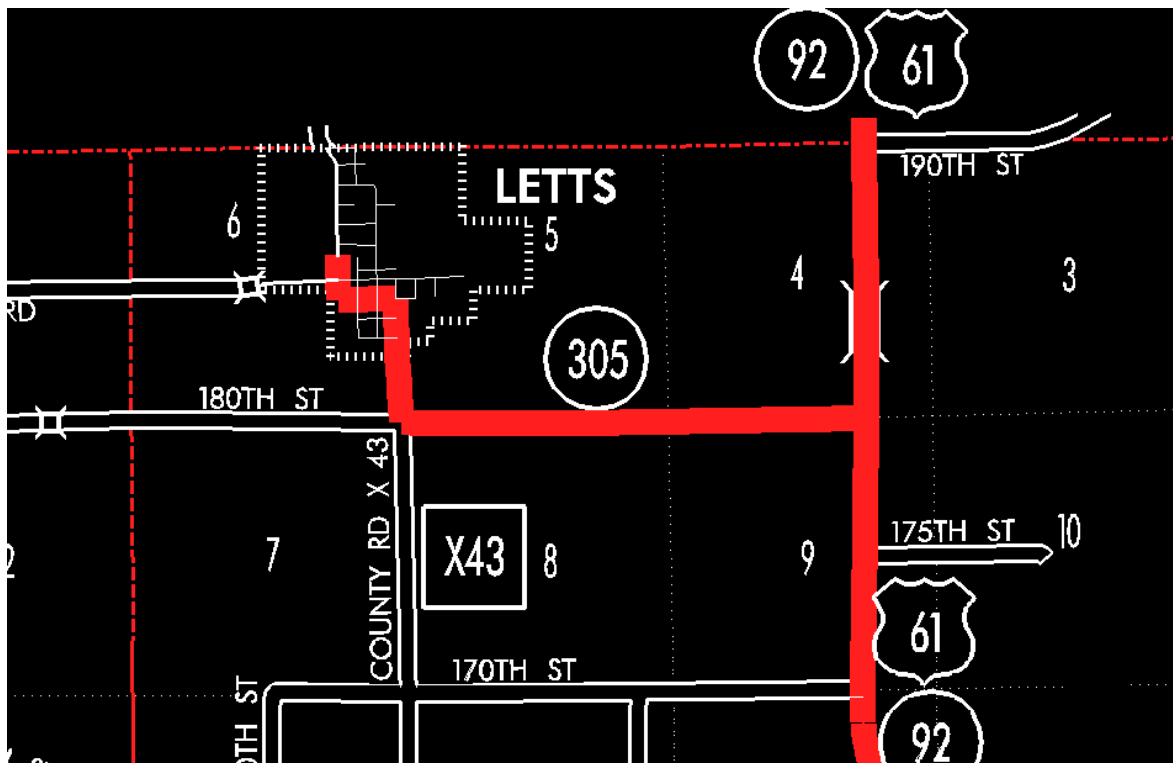
EFFECTIVE DATE: 07-01-2003

ENTERED BY: Stefani Wonders

ENTERED DATE: 08-23-2006

DISCUSSION/BACKGROUND:

Senate File 451 transferred Iowa 305 in its entirety, in Louisa County, to city and county jurisdiction on July 1, 2003.



OFFICIAL DESCRIPTION CHANGE

COUNTY: Louisa

ROUTE: Iowa 305

STAFF ACTION NUMBER: S-87-1540

APPROVAL DATE: 5-13-87

New description – Iowa 305 and its extension in Louisa County described as follows:

Letts:

Beginning on Linn Street approximately 450 feet north of Main Street; thence south on Linn Street to Vine Street; thence east on Vine Street to Nebraska Street; thence south on Nebraska Street to the south corporation line.

Beginning on the south corporation line of Letts connecting with Nebraska Street; thence south following substantially the section line of Section 5-T75N-R3W to a point approximately 200 feet north of the SW Corner of Section 5-T75N-R3W; thence curving in a southeasterly direction to a point approximately 200 feet east of the SW Corner of Section 5-T75N-R3W; thence east following substantially the section line of Sections 8 and 9-T75N-R3W (junction of US 61) at a point approximately ¼ mile west of the NE Corner of Section 9-T75N-R3W.

COMMISSION ORDER

DIVISION: Planning & Research

COMMISSION ORDER NUMBER: PR-79-272

SUBMITTED BY: C.I. MacGillivray

MEETING DATE: 11-2-78

DISCUSSION/BACKGROUND:

Due to a review of our Primary Road System records, Iowa 305 in Louisa County should be deleted and the new description added should be officially included in the Primary Road System.

Iowa 305 begins in Letts, Iowa and travels southerly and easterly terminating at the junction US 61 approximately 23 miles southeast of Letts, Iowa.

PROPOSAL/ACTION RECOMMENDATION:

Locate Iowa 305 and its extension in Louisa County as follows:

Letts:

Beginning at the Chicago, Rock Island and Pacific Railroad; thence southerly, easterly, and southerly to the south corporation line connecting with an unnamed street.

Beginning on the south corporation line of the City of Letts; connecting with an unnamed street; thence southerly following substantially the section line of Section 5-T75N-R3W to a point approximately 200 feet north of the SW Corner of Section 5-T75N-R3W; thence curving in a southeasterly direction to a point approximately 200 feet east of the SW Corner of Section 5-T75N-R3W; thence easterly following substantially the section line of Sections 8 and 9-T75N-R3W (junction of US 61) to a point approximately ¼ mile west of the NE Corner of Section 9-T75N-R3W.

NOW, THEREFORE: Be it resolved that the Iowa Department of Transportation approve the location of Iowa 305 in Louisa County, Iowa.

NOTE: To become effective upon the adoption of this resolution.

REVISED: 5-13-87

OFFICIAL DESCRIPTION CHANGE

COUNTY: Louisa

CITY OF: Letts

ROUTE: Iowa 305

APPROVAL DATE: 7-13-55

Commencing at the south corporation line on Nebraska Street; thence north on Nebraska Street to Vine Street; thence west on Vine Street to Linn Street; thence north on Linn Street to the Chicago, Rock Island, and Pacific Railroad,

REVISED: 11-2-78

OFFICIAL DESCRIPTION CHANGE

COUNTY: Louisa

ROUTE: Iowa 305

APPROVAL DATE: 4-14-37

Beginning on the south corporation line of the Town of Letts, connecting with Nebraska Street; thence south to a point near the SW Corner of Section 5-T75-R3W; thence east following substantially the section line to a point approximately ¼ mile west of the SE Corner of Section 4-T75-R3W.

REVISED: 11-2-78