

OFFICIAL DESCRIPTION CHANGE

OFFICE: Transportation Data

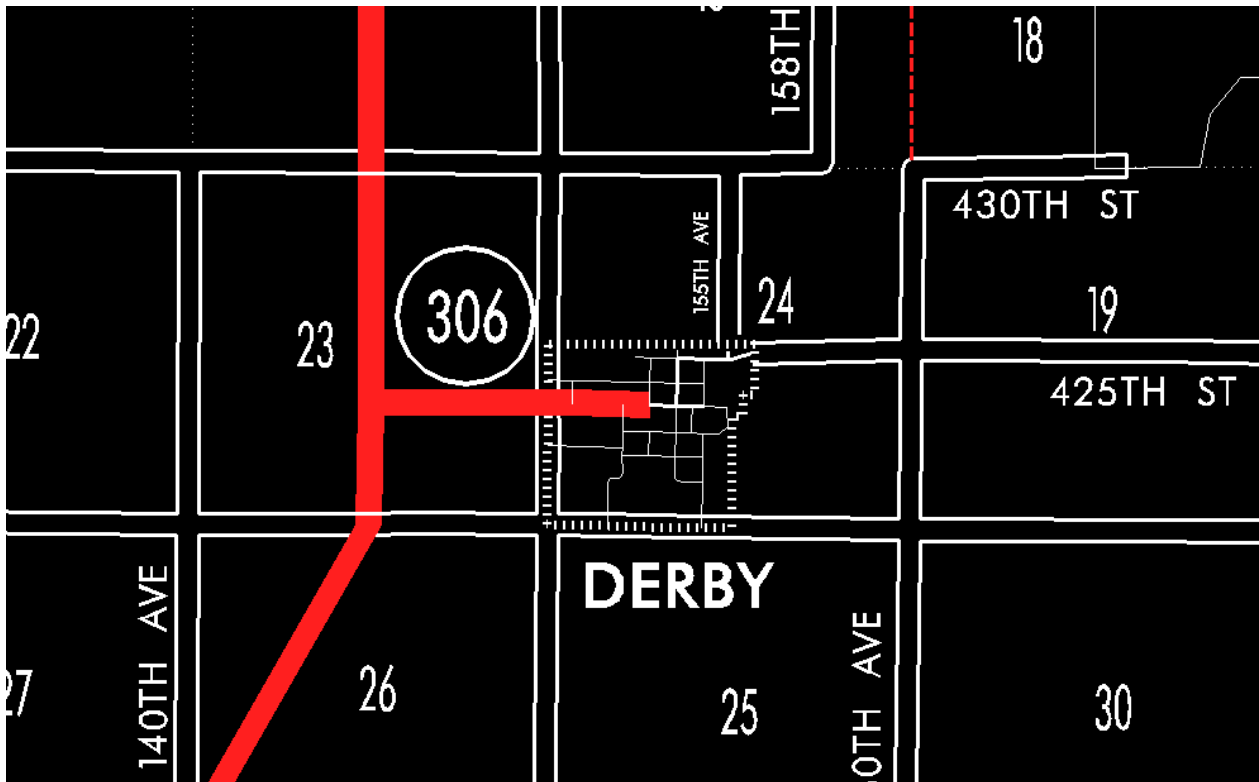
EFFECTIVE DATE: 07-01-2003

ENTERED BY: Stefani Wonders

ENTERED DATE: 08-22-2006

DISCUSSION/BACKGROUND:

Senate File 451 transferred Iowa 306 in its entirety, in Lucas County, to city and county jurisdiction on July 1, 2003.



OFFICIAL DESCRIPTION CHANGE

COUNTY: Lucas

ROUTE: Iowa 306

STAFF ACTION NUMBER: S-87-1536

APPROVAL DATE: 5-13-87

New description – Iowa 306 and its extension in Lucas County described as follows:

Beginning at a point approximately 800 feet south of the center of Section 23-T71N-R23W (junction US 65); thence east through Section 23-T71N-R23W to the west corporation line of Derby connecting with Front Street.

Derby:

Beginning on Front Street at the west corporation line; thence east on Front Street to Center Street.

COMMISSION ORDER

DIVISION: Planning & Research

COMMISSION ORDER NUMBER: PR-79-272

SUBMITTED BY: C.I. MacGillivray

MEETING DATE: 11-2-78

DISCUSSION/BACKGROUND:

Due to a review of our Primary Road System records, Iowa 306 in Lucas County should be deleted from the Primary Road System and the new description added should be officially included into the Primary Road System.

Iowa 306 begins at junction US 65 approximately ½ mile west of Derby and travels in an easterly direction terminating in the City of Derby, Iowa.

PROPOSAL/ACTION RECOMMENDATION:

Locate Iowa 306 and its extension in Lucas County as follows:

Beginning at a point approximately 800 feet south of the center of Section 23-T71W-R23W (junction US 65); thence east through Section 23-T71N-R23W; thence east to the west corporation line of the City of Derby, connecting with an unnamed street.

Derby:

Beginning on the west corporation line connecting with an unnamed street; thence easterly to Center Street.

NOW, THEREFORE: Be it resolved that the Iowa Department of Transportation approve the location of Iowa 306, Lucas County, Iowa.

NOTE: To become effective upon the adoption of this resolution.

REVISED: 5-13-87

OFFICIAL DESCRIPTION CHANGE

COUNTY: Lucas

CITY OF: Derby

ROUTE: Iowa 306

APPROVAL DATE: 8-30-67

Beginning on Front Street at the west corporation line; thence easterly on Front Street to Center Street.

OFFICIAL DESCRIPTION CHANGE

COUNTY: Lucas

ROUTE: Iowa 306

APPROVAL DATE: 4-14-37

Beginning at a point approximately 800 feet south of the center of Section 23-T71N-R23W; thence east to the west corporation line of the Town of Derby, connecting with Front Street.

REVISED: 8-30-67