

OFFICIAL DESCRIPTION CHANGE

OFFICE: Transportation Data

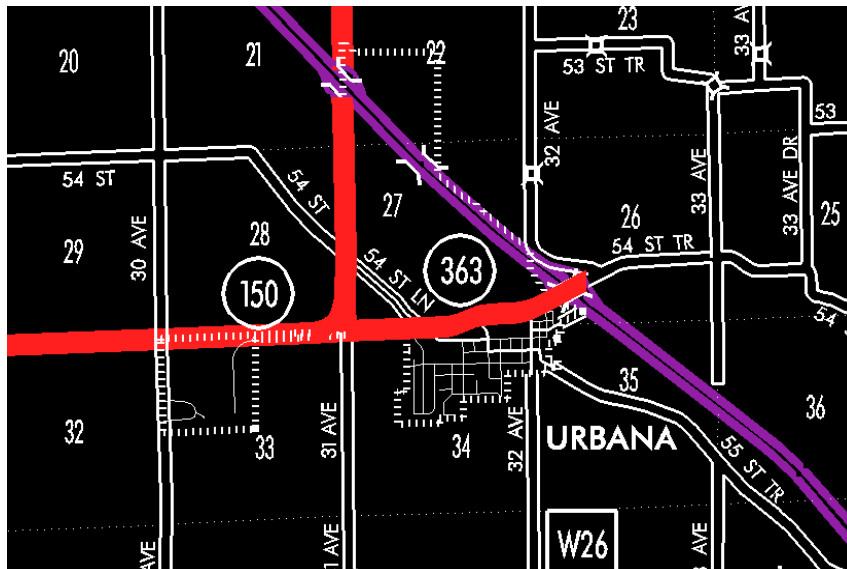
EFFECTIVE DATE: 07-01-2003

ENTERED BY: Stefani Wonders

ENTERED DATE: 08-24-2006

DISCUSSION/BACKGROUND:

Senate File 451 transferred Iowa 363 in its entirety, in Benton County, to county jurisdiction on July 1, 2003.



STAFF ACTION

OFFICE: Transportation Inventory

STAFF ACTION NUMBER: S-85-406

SUBMITTED BY: Patrick R. Cain

APPROVAL DATE: 10-18-84

DISCUSSION/BACKGROUND:

Iowa 363 has been relocated near the City of Urbana to connect with Interstate 380 that was opened to traffic August 14, 1984. The remaining portion of Iowa

363 in the City of Urbana should be re-designated as Unsigned Iowa 919. The official description of Iowa 363 should be revised to reflect this change of alignment.

Iowa 363 begins at a junction with Iowa 150 approximately ½ mile west of the City of Urbana and travels easterly and northeasterly to an intersection with Interstate 380 approximately ¼ mile north of the City of Urbana.

PROPOSAL/ACTION RECOMMENDATION:

It is recommended to approve revising the description of Iowa 363 in Benton County and including the new description in the Primary Road System.

New Description – Iowa 363 in Benton County described as follows:

Beginning at a point approximately 1250 feet west of the NE Corner Section 33–T86N–R9W (junction Iowa 150) then in an easterly direction following substantially the section line of Sections 33 and 34–T86N–R9W to a point approximately 200 feet east of the N ¼ of Section 34–T86N–R9W on the north corporation line of the City of Urbana; thence curving in a northeasterly direction through Sections 27 and 26–T86N–R9W to the NE ramps of Interstate 380 in the SW ¼ of section 26–T86N–R9W.

COMMISSION ORDER

DIVISION: Planning & Research

COMMISSION ORDER NUMBER: PR-79-272

SUBMITTED BY: C.I. MacGillivray

MEETING DATE: 11-2-78

DISCUSSION/BACKGROUND:

Due to a review of our Primary Road System Records Iowa 363 in Benton County should be deleted and the new description added should be officially included into the Primary System.

PROPOSAL/ACTION RECOMMENDATION:

It is recommended that the old description of Iowa 363 in Benton County be deleted and the new description, as referred in the attached detailed description, be included in the Primary Road System effective upon the adoption of this resolution.

Locate Iowa 363 and its extension in Benton County as follows:

Beginning at a point approximately 1 000 feet west of the NE Corner Section 33-T86N-R9W (junction Iowa 101); thence in an easterly direction following substantially the section line of Sections 33 and 34-T86N-R9W to the north corporation line of the City of Urbana connecting with an unnamed street.

Urbana:

Beginning at the north corporation line connecting with an unnamed street; thence curving in a southeasterly direction; thence south and east to the east line of Walnut Street.

REVISED: 10-18-84

OFFICIAL DESCRIPTION CHANGE

COUNTY: Benton

CITY OF: Urbana

ROUTE: Iowa 363

APPROVAL DATE: 1-13-60

Beginning at the north corporation line of the Town of Urbana; thence curving in a southeasterly direction approximately 300 feet to the center of Ash Street; thence south on Ash Street to Wood Street; thence east on Wood Street to the east line of Walnut Street.

REVISED 1978

NOTE: To become effective on January 1, 1961.

OFFICIAL DESCRIPTION CHANGE

COUNTY: Benton

ROUTE: Iowa 363

APPROVAL DATE: 8-11-53

Beginning at a point approximately 1000 feet west of the NE Corner Section 33-T86N-R9W; thence in an easterly direction to a point 8.9 feet south of the NE Corner said Section 33; thence continuing in an easterly direction 3779.5 feet to a point approximately 41 feet north of the north line of Section 34-T86N-R9W; thence curving in a southeasterly direction approximately 152 feet to the north corporation line of the Town of Urbana, connecting with extension of Ash Street.

REVISED 1978

OFFICIAL DESCRIPTION CHANGE

COUNTY: Benton

ROUTE: Iowa 363

COMMISSION ORDER NUMBER:

APPROVAL DATE: 08-11-53

Beginning at the north corporation line of the Town of Urbana at a point approximately 1270 feet east of the N ¼ Cor. Sec. 34-T86-R9; thence curving in a southeasterly direction approximately 300 feet to the center of Ash Street; thence south on Ash Street to Wood Street; thence east on Wood Street to the west line of Union Street.

OFFICIAL DESCRIPTION CHANGE

COUNTY: Benton

APPROVAL DATE: 4-14-37

CONNECTING CURVE

Junction of Iowa 101 and Iowa 363

Beginning at a point approximately 300 feet east of the SW Corner of Section 27-T86N-R9W; thence curving in a northwesterly direction to a point approximately 300 feet north of the SW Corner of Section 27-T86N-R9W; thence north to a point approximately 600 feet north of the SW Corner of Section 27-T86N-R9W.