

OFFICIAL DESCRIPTION CHANGE

OFFICE: Transportation Data

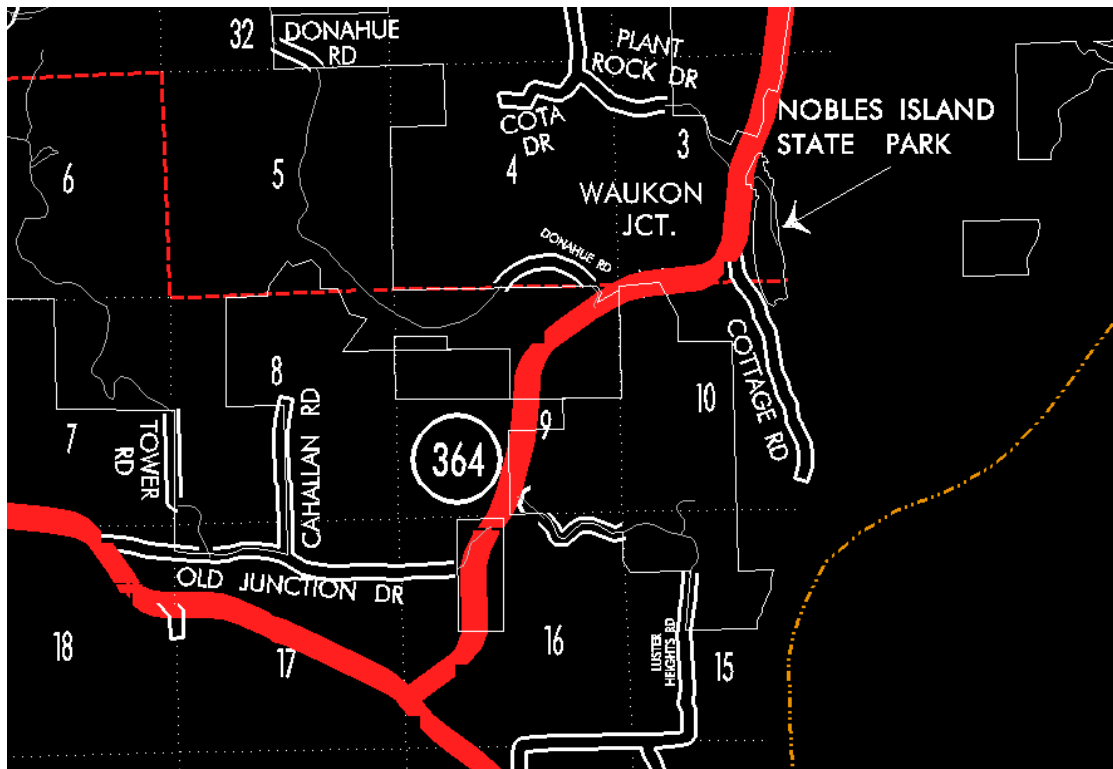
EFFECTIVE DATE: 07-01-2003

ENTERED BY: Stefani Wonders

ENTERED DATE: 08-31-2006

DISCUSSION/BACKGROUND:

Senate File 451 transferred Iowa 364 in its entirety, in Allamakee County, to city and county jurisdiction on July 1, 2003.



OFFICIAL DESCRIPTION CHANGE**COUNTY:** Allamakee**ROUTE:** Iowa 364**STAFF ACTION NUMBER:** S-87-683**APPROVAL DATE:** 12-18-86

New Description – Iowa 364 and its extension in Allamakee County described as follows:

Beginning at a point approximately 1,160 feet north and 150 feet east of the SW Corner Section 16-T96N-R3W (junction Iowa 76); thence in a northeasterly direction through Sections 16, 9, 10, and 3-T96N-R3W and Sections 34, 27, and 26-T97N-R3W to the west corporation line of Harpers Ferry, connecting with Rhomberg Avenue.

Harpers Ferry:

Beginning on the west corporation line connecting with Rhomberg Avenue; thence northeasterly on Rhomberg Avenue to the Cota Creek Bridge.

COMMISSION ORDER**DIVISION:** Planning & Research**COMMISSION ORDER NUMBER:** PR-82-613**SUBMITTED BY:** Patrick R. Cain**MEETING DATE:** 3-30-82**DISCUSSION/BACKGROUND:**

Iowa 364 begins at Iowa 76 approximately six miles southwest of the City of Harpers Ferry, and travels northeasterly into the City of Harpers Ferry.

Transfer of jurisdiction agreement number CR-79, between Allamakee County, the City of Harpers Ferry, and the Iowa Department of Transportation, transferred that portion of Iowa 364 in the City of Harpers Ferry from the Cota

Creek Bridge northeasterly and southeasterly to Third Street to city jurisdiction on July 7, 1980.

PROPOSAL/ACTION RECOMMENDATION:

It is recommended the commission approve deleting the present description of Iowa 364 in Allamakee County from the primary road system and approve including the attached new description of Iowa 364 in the primary road system.

Locate Iowa 364 and its extension in Allamakee County as follows:

Beginning at a point approximately 1,160 feet north and 150 feet east of the SW Corner Section 16-T96N-R3W (junction Iowa 76); thence in a northeasterly direction through Sections 16, 9, 10, and 3-T97N-R3W and Sections 34, 27, and 26-T97N-R3W to the west corporation line of the City of Harpers Ferry, connecting with an unnamed street.

Harpers Ferry:

Beginning on the west corporation line connecting with an unnamed street; thence northeasterly to the Cota Creek Bridge.

REVISED 12-18-86

COMMISSION ORDER

DIVISION: Planning & Research

COMMISSION ORDER NUMBER: PR-79-272

SUBMITTED BY: C.I. MacGillivray

MEETING DATE: 11-2-78

DISCUSSION/BACKGROUND:

Due to a review of our Primary Road System Records Iowa 364 in Allamakee County should be deleted and the new description added should be officially included into the Primary System.

PROPOSAL/ACTION RECOMMENDATION:

It is recommended that the old description of Iowa 364 in Allamakee County be deleted and the new description, as referred in the attached detailed description, be included in the Primary Road System effective upon the adoption of this resolution.

Locate Iowa 364 and its extension in Allamakee County as follows;

Beginning at a point approximately 1,160 feet north and 150 feet east of the SW Corner Section 16-T96N-R3W (junction Iowa 76); thence in a northeasterly and northerly direction to a point near the N ¼ Corner Section 16-T96N-R3W; thence in a northeasterly direction through Section 9, 10, and 3-T96N-R3W to the west side of the Chicago, Milwaukee, Saint Paul and Pacific Railroad at a point near the S ¼ Corner Section 34-T97N-R3W; thence in a northerly and northeasterly direction through Section 34, 27, and 26-T97N-R3W to the west corporation line of the City of Harpers Ferry, connecting with an unnamed street.

Harpers Ferry:

Beginning on the west corporation line connecting with an unnamed street; thence northeasterly; thence curving easterly and southeasterly; thence southeasterly to Third Street.

REVISED: 3-30-82

OFFICIAL DESCRIPTION CHANGE

COUNTY: Allamakee

ROUTE: Iowa 364

APPROVAL DATE: 4-2-58

Beginning at a point approximately 1,160 feet north and 150 feet West of the SW Corner Section 16-T96N-R3W; thence in a northeasterly and northerly direction to a point near the N $\frac{1}{4}$ Corner Section 16-T96N-R3W; thence in a northeasterly direction through Section 9, 10 and 3-T96N-R3W to the west side of the Chicago, Milwaukee, Saint Paul and Pacific Railroad at a point near the S $\frac{1}{4}$ Corner Section 34-T97N-R3W; thence in a northerly and northeasterly direction through Section 34, 27, 26 and 23-T97N-R3W to the west corporation line of the Town of Harpers Ferry, connecting with an unnamed street.

Harpers Ferry:

Beginning on an unnamed street at the west corporation line; thence northeasterly on an unnamed street approximately 1,220 feet; thence curving in an easterly and southeasterly direction to Chestnut Street; thence southeasterly on Chestnut Street to Third Street.