

STAFF ACTION

OFFICE: Transportation Inventory

STAFF ACTION NUMBER: S-03-0937

SUBMITTED BY: Peggi Knight

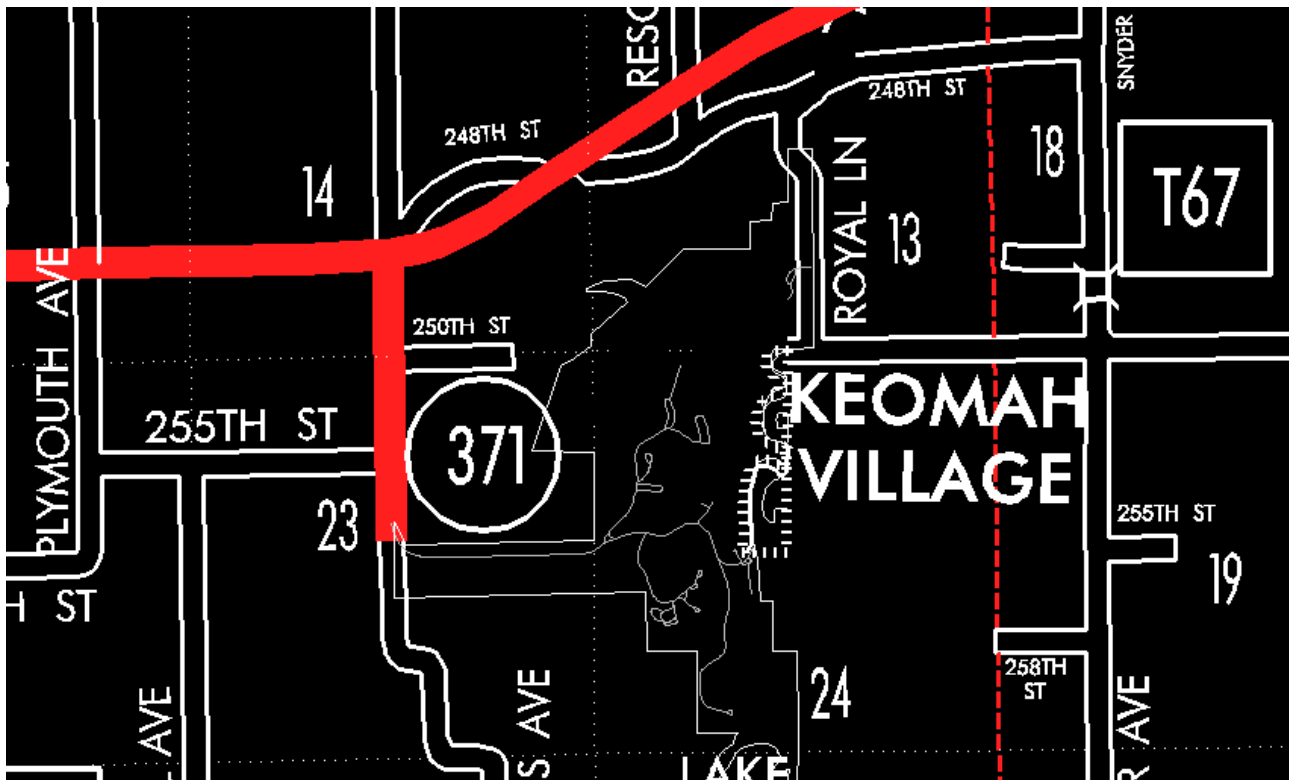
SUBMITTAL DATE: 05-29-2003

DISCUSSION/BACKGROUND:

Transfer of jurisdiction agreement number 2003-TJ-012, between Mahaska County and the Iowa Department of Transportation, transferred that portion of Iowa 371 from approximately 400 feet north of the Center of Section 23-T75N-R15W (Lake Keomah State Park); thence northerly following substantially the center section line of Sections 23 and 14-T75N-R15W to a point approximately 1400 feet north of the S ¼ Corner Section 14-T75N-R15W (junction Iowa 92) to county jurisdiction on May 1, 2003.

PROPOSAL/ACTION RECOMMENDATION:

It is recommended to approve deleting the present description of Iowa 371 and its extensions in Mahaska County from the Primary Road System.



COMMISSION ORDER

DIVISION: Planning & Research

COMMISSION ORDER NUMBER: PR-79-272

SUBMITTED BY: C.I. MacGillivray

MEETING DATE: 11-2-78

DISCUSSION/BACKGROUND:

Due to a review of our Primary Road System Records, Iowa 371 in Mahaska County should be deleted and the new description added should be officially included into the Primary System.

PROPOSAL/ACTION RECOMMENDATION:

It is recommended that the old description of Iowa 371 in Mahaska County be deleted and the new description, as referred in the attached detailed description, be included in the Primary Road System effective upon the adoption of this resolution.

Locate Iowa 371 in Mahaska County as follows:

Beginning at a point approximately 400 feet north of the center of Section 23-T75N-R15W (Lake Keomah State Park); thence northerly following substantially the center section line of Sections 23 and 14-T75N-R15W to a point approximately 1400 feet north of the S¼ Corner Section 14-T75N-R15W (junction Iowa 92).

OFFICIAL DESCRIPTION CHANGE

COUNTY: Mahaska

ROUTE: Iowa 371

APPROVAL DATE: 3-23-42

Commencing at a point approximately 400 feet north of the center of Section 23-T75N-R15W; thence north following substantially the quarter section line through Sections 23 and 14-T75N-R15W to Iowa 92.