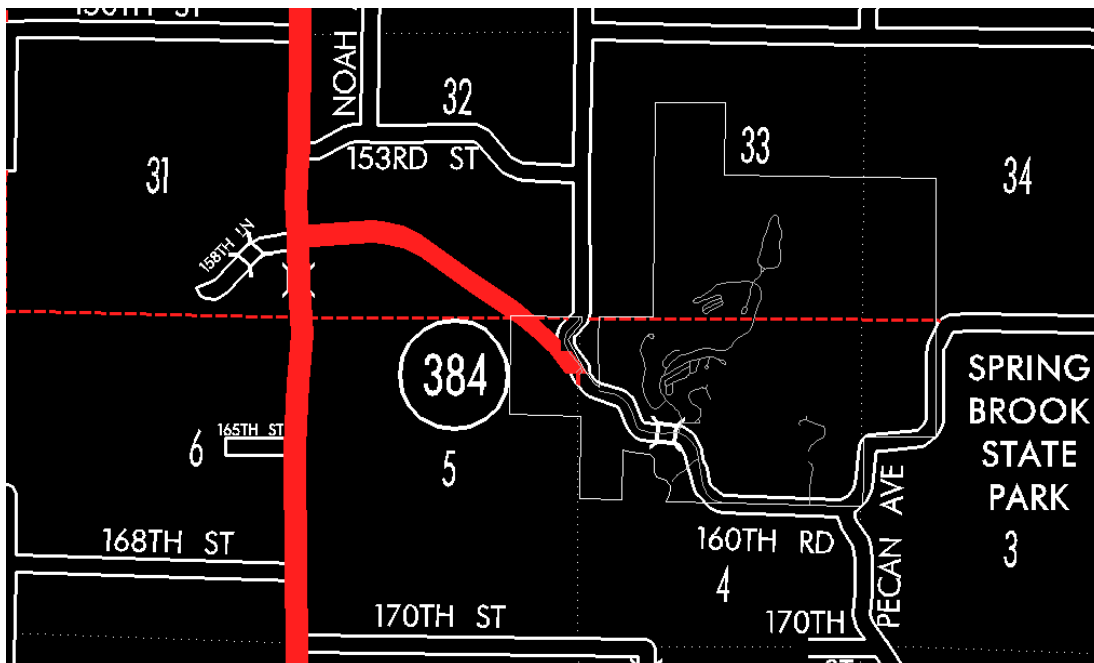


ENTERED DATE: 08-23-2006

Senate File 451 transferred Iowa 384 in its entirety, in Guthrie County, to county jurisdiction on July 1, 2003.



MEETING DATE: 11-2-78

DISCUSSION/BACKGROUND:

Due to a review of our Primary Road System records Iowa 384 in Guthrie County should be deleted from the Primary Road System and the new description added should be officially included into the Primary Road System.

Iowa 384 begins at the junction Iowa 25 approximately 6 ½ miles north of Guthrie Center and travels in an easterly and southeasterly direction terminating at Springbrook State Park.

PROPOSAL/ACTION RECOMMENDATION:

Locate on the Primary Road System Iowa 384 in Guthrie County as follows:

Beginning at a point approximately 1500 feet north of the SW Corner Section 32-T81N-R31W; thence in an easterly, southeasterly and southerly direction through Section 32-T81N-R31W and Section 5 and 4-T80N-R31W to Springbrook State Park at a point approximately ¼ mile south of the NW Corner Section 4-T80N-R31W.

NOW, THEREFORE: Be it resolved that the Iowa Department of Transportation approve the location of Iowa 384 in Guthrie County, Iowa.

NOTE: To become effective upon adoption of this resolution.

OFFICIAL DESCRIPTION CHANGE

COUNTY: Guthrie

ROUTE: Iowa 384

APPROVAL DATE: 7-11-44

Beginning at a point approximately 1 500 feet north of the SW Corner Section 32 T81N-R31W; thence in an easterly and southeasterly direction through Section 32-T81N-R31W and Section 5-T80N-R31W to Springbrook State Park at a point approximately $\frac{1}{4}$ mile south of the NW Corner Section 4-T80N-R31W.

REVISED: 11-2-78