

OFFICIAL DESCRIPTION CHANGE**OFFICE:** Transportation Data**EFFECTIVE DATE:** 11-27-2006**ENTERED BY:** Darlene Bovee**ENTERED DATE:** 02-22-2007**DISCUSSION/BACKGROUND:**

Transfer of jurisdiction agreement number 2004-TJ-002, between Sioux County and the Iowa Department of Transportation, transferred that portion of unsigned Iowa 404 from approximately 1145 feet north of the SW Corner Section 28-T94N-R44W; thence northeasterly through said Section 28 to approximately 1520 feet north and 1020 feet east of the SW Corner of said Section 28 to a dead-end to county jurisdiction on November 27, 2006.

Transfer of jurisdiction agreement 2004-TJ-001, between Sioux County and the Iowa Department of Transportation, transferred that portion of unsigned Iowa 404 from approximately 1786 feet south of the NW Corner Section 15-T95N-R43W; thence northerly and northeasterly through Sections 15, 10, and 3-T95N-R43W to the west corporation line of Hospers connecting with an unnamed street to county jurisdiction on November 6, 2006.

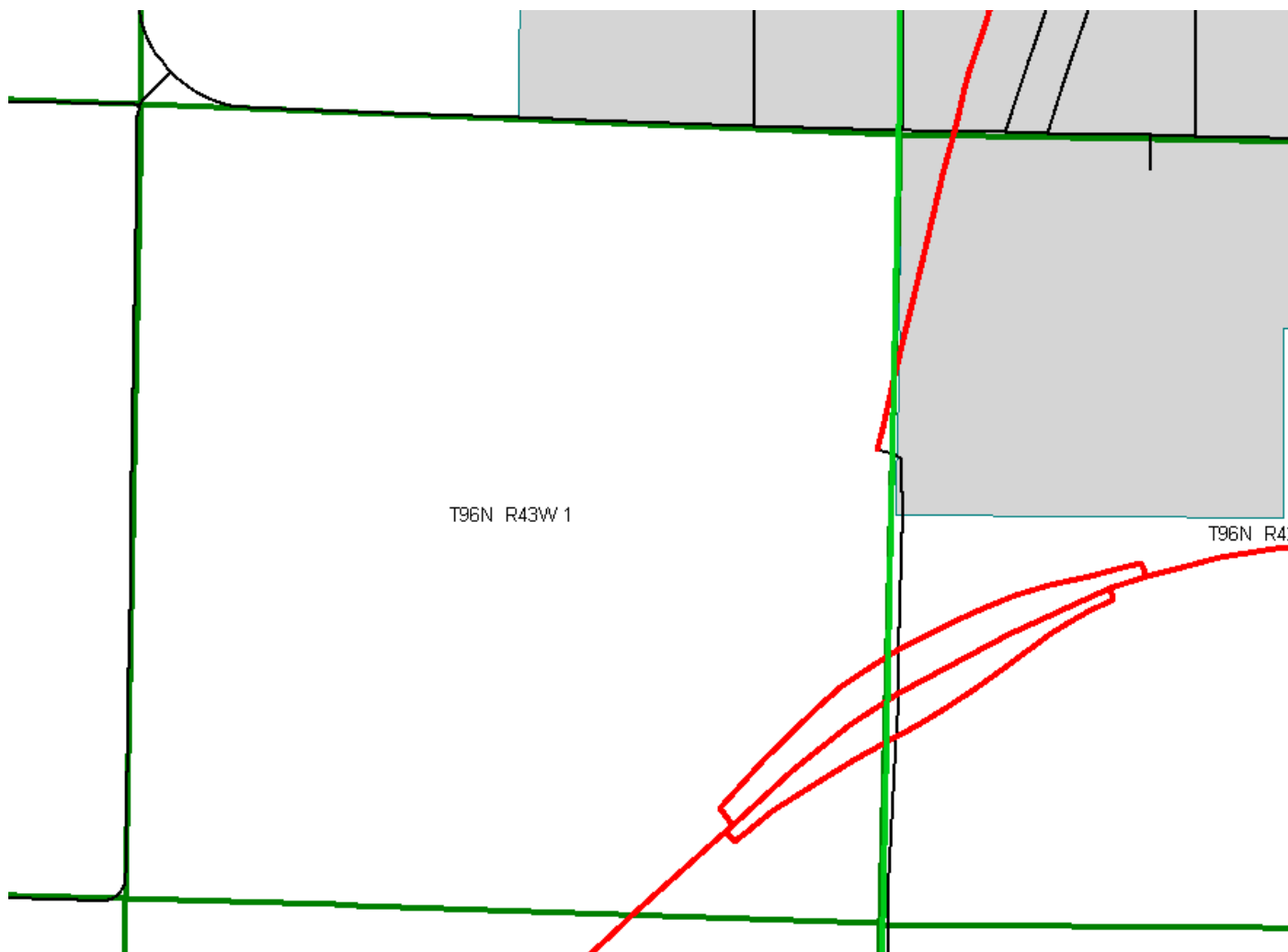
Transfer of jurisdiction agreement 2003-TJ-056, between the City of Hospers and the Iowa Department of Transportation, transferred that portion of unsigned Iowa 404 from the west corporation line connecting with an unnamed street; thence northeasterly and northerly on the unnamed street to the north corporation line (approximately 140 feet south and 1710 feet west of the Center Section 3-T95N-R43W) to city jurisdiction on November 6, 2006.

Transfer of jurisdiction agreement 2004-TJ-001, between Sioux County and the Iowa Department of Transportation, transferred that portion of unsigned Iowa 404 from the north corporation line of Hospers connecting

with an unnamed street; thence northeasterly through Section 3 and Sections 34 and 35–T96N–R43W to approximately 2241 feet south and 544 feet east of the NW Corner of said Section 35 to county jurisdiction on November 6, 2006.

New description – Unsigned Iowa 404 and its extensions in Sioux County described as follows:

Beginning at approximately 2185 feet south and 106 feet west of the NE Corner Section 1–T96N–R43W; thence northeasterly to the Sioux–O’Brien County line approximately 1684 feet south of the NE Corner Section 1–T96N–R43W (west corporation line of Sheldon connecting with Woodcock Avenue) (NW Corner Section 6–T96N–R42W, O’Brien County).



OFFICIAL DESCRIPTION CHANGE

OFFICE: Transportation Data

EFFECTIVE DATE: 7-10-2006

ENTERED BY: Stefani Wonders

ENTERED DATE: 08-30-2006

New description – Unsigned Iowa 404 and its extension in Sioux County described as follows:

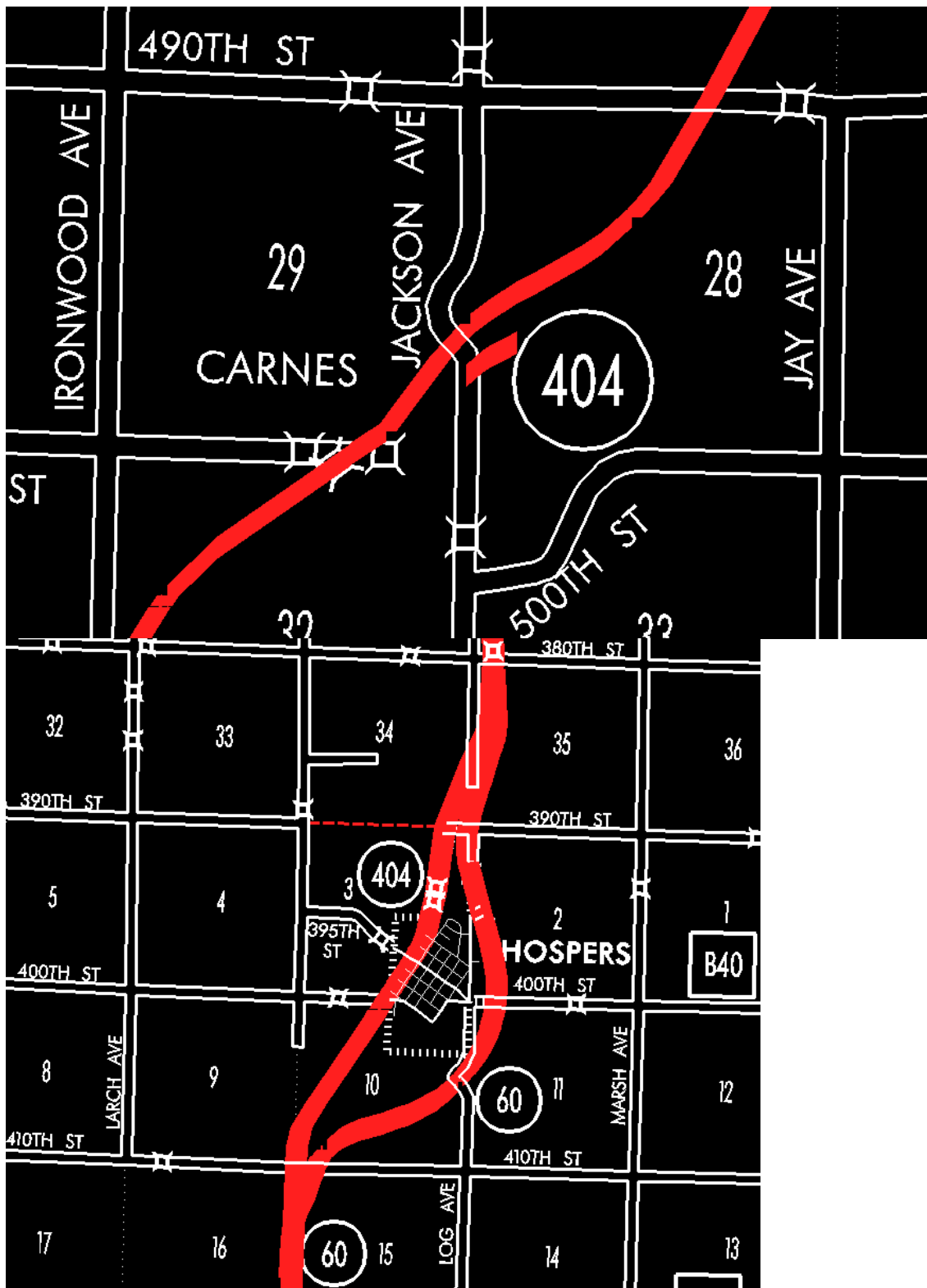
Beginning at approximately 1145 feet north of the SW Corner Section 28–T94N–R44W; thence northeasterly through said Section 28 to approximately 1520 feet north and 1020 feet east of the SW Corner of said Section 28 to a dead-end.

Beginning again at approximately 1786 feet south of the NW Corner Section 15–T95N–R43W; thence northerly and northeasterly through Sections 15, 10, and 3–T95N–R43W to the west corporation line of Hospers connecting with an unnamed street.

Hospers:

Beginning at the west corporation line connecting with an unnamed street; thence northeasterly and northerly on the unnamed street to the north corporation line (approximately 140 feet south and 1710 feet west of the Center Section 3–T95N–R43W).

Beginning on the north corporation line of Hospers connecting with an unnamed street; thence northeasterly through Section 3 and Sections 34 and 35–T96N–R43W to approximately 2241 feet south and 544 feet east of the NW Corner of said Section 35.



OFFICIAL DESCRIPTION CHANGE

OFFICE: Transportation Data

EFFECTIVE DATE: 1-31-2005

ENTERED BY: Stefani Wonders

ENTERED DATE: 08-30-2006

DISCUSSION/BACKGROUND:

Transfer of jurisdiction agreement number 2002-TJ-015, between Sioux County and the Iowa Department of Transportation, transferred those portions of Unsigned Iowa 404 from approximately 560 feet west and 2870 feet south of the NE Corner Section 15-T94N-R44W; thence northeasterly through Sections 15 and 11-T94N-R44W to the south corporation line of Alton (approximately 486 feet east of the W ¼ Corner of said Section 11) connecting with 3rd Avenue and again on the northeast corporation line of Alton, connecting with 450th Street; thence northeasterly through Section 36-T95N-R44W to approximately 1000 feet north and 537 feet east of the SW Corner of said Section 36 to county jurisdiction on January 31, 2005.

Transfer of jurisdiction agreement number 2002-TJ-016, between the city of Alton and the Iowa Department of Transportation, transferred that portion of Unsigned Iowa 404 from the south corporation line, connecting with 3rd Avenue; thence northeasterly on 3rd Avenue to the junction of Iowa 10/450th Street; thence easterly on 450th Street to the northeast corporation line (to a point near the SW Corner Section 36-T95N-R44W) to city jurisdiction on January 31, 2005.

PROPOSAL/ACTION RECOMMENDATION:

New description – Unsigned Iowa 404 and its extension in Sioux County described as follows:

Beginning again at approximately 1786 feet south of the NW Corner Section 15-T95N-R43W; thence northerly and northeasterly through Sections 15, 10, and 3-T95N-R43W to the west corporation line of Hospers connecting with an unnamed street.

Hospers:

Beginning at the west corporation line connecting with an unnamed street; thence northeasterly and northerly on the unnamed street to the north corporation line (approximately 140 feet south and 1710 feet west of the Center Section 3-T95N-R43W).

Beginning on the north corporation line of Hospers connecting with an unnamed street; thence northeasterly through Section 3 and Sections 34 and 35-T96N-R43W to approximately 2241 feet south and 544 feet east of the NW Corner of said Section 35.



OFFICIAL DESCRIPTION CHANGE

OFFICE: Transportation Data

EFFECTIVE DATE: 12-2005

ENTERED BY: Stefani Wonders

ENTERED DATE: 08-30-2006

DISCUSSION/BACKGROUND:

Due to the new bypass of Iowa 60 around Hospers, Old Iowa 60 was designated Unsigned Iowa 404 and the description should be changed to reflect this.

PROPOSAL/ACTION RECOMMENDATION:

New description – Unsigned Iowa 404 and its extension in Sioux County described as follows:

Beginning approximately 560 feet west and 2870 feet south of the NE Corner Section 15-T94N-R44W; thence northeasterly through Sections 15 and 11-T94N-R44W to the south corporation line of Alton (approximately 486 feet east of the W $\frac{1}{4}$ Corner of said Section 11) connecting with 3rd Avenue.

Alton:

Beginning on the south corporation line, connecting with 3rd Avenue; thence northeasterly on 3rd Avenue to the junction of Iowa 10/450th Street; thence easterly on 450th Street to the northeast corporation line (to a point near the SW Corner Section 36-T95N-R44W).

Beginning again on the northeast corporation line of Alton, connecting with 450th Street; thence northeasterly through Section 36-T95N-R44W to approximately 1000 feet north and 537 feet east of the SW Corner of said Section 36.

Beginning again at approximately 1786 feet south of the NW Corner Section 15-T95N-R43W; thence northerly and northeasterly through Sections 15, 10, and 3-T95N-R43W to the west corporation line of Hospers connecting with an unnamed street.

Hospers:

Beginning at the west corporation line connecting with an unnamed street; thence northeasterly and northerly on the unnamed street to the north corporation line (approximately 140 feet south and 1710 feet west of the Center Section 3-T95N-R43W).

Beginning on the north corporation line of Hospers connecting with an unnamed street; thence northeasterly through Section 3 and Sections 34 and 35-T96N-R43W to approximately 2241 feet south and 544 feet east of the NW Corner of said Section 35.





OFFICIAL DESCRIPTION CHANGE

OFFICE: Transportation Data

EFFECTIVE DATE: 9-16-2004

ENTERED BY: Stefani Wonders

ENTERED DATE: 08-30-2006

DISCUSSION/BACKGROUND:

Due to the new bypass of Iowa 60 around Alton, Old Iowa 60 was designated Unsigned Iowa 404.

PROPOSAL/ACTION RECOMMENDATION:

New description – Unsigned Iowa 404 and its extension in Sioux County described as follows:

Beginning approximately 560 feet west and 2870 feet south of the NE Corner Section 15–T94N–R44W; thence northeasterly through Sections 15 and 11–T94N–R44W to the south corporation line of Alton (approximately 486 feet east of the W $\frac{1}{4}$ Corner of said Section 11) connecting with 3rd Avenue.

Alton:

Beginning on the south corporation line, connecting with 3rd Avenue; thence northeasterly on 3rd Avenue to the junction of Iowa 10/450th Street; thence easterly on 450th Street to the northeast corporation line (to a point near the SW Corner Section 36–T95N–R44W).

Beginning again on the northeast corporation line of Alton, connecting with 450th Street; thence northeasterly through Section 36–T95N–R44W to approximately 1000 feet north and 537 feet east of the SW Corner of said Section 36.

