

OFFICIAL DESCRIPTION CHANGE

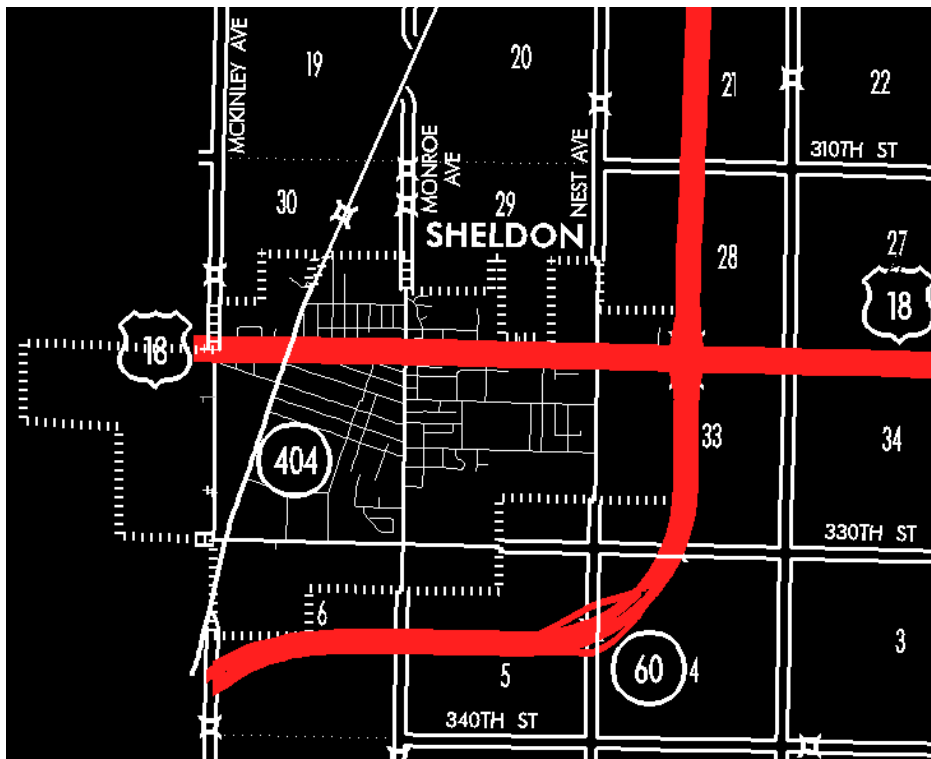
OFFICE: Transportation Data

EFFECTIVE DATE: 11-26-2007

ENTERED BY: Darlene Bovee

ENTERED DATE: 11-29-2007

Transfer of jurisdiction agreement number 2004-TJ-006, between the City of Sheldon and the Iowa Department of Transportation, transferred that portion of Unsigned Iowa 404 from the O'Brien-Sioux County line at a point approximately 1684 feet south of the NW Corner Section 6-T96N-R42W (NE Corner Section 1-T96N-R43W, Sioux County) (west corporation line of Sheldon connecting with 2nd Avenue); thence northeasterly on 2nd Avenue to the north corporation line (approximately 1740 feet north of the S $\frac{1}{4}$ Corner Section 30-T97N-R42W) to city jurisdiction on November 26, 2007.



OFFICIAL DESCRIPTION CHANGE

OFFICE: Transportation Data

EFFECTIVE DATE: 06-01-2007

ENTERED BY: Darlene Bovee

ENTERED DATE: 08-30-2007

Transfer of jurisdiction agreement number 2004-TJ-007, between O'Brien County and the Iowa Department of Transportation, transferred that portion of Unsigned Iowa 404 from the north corporation line of Sheldon connecting with 2nd Avenue; thence in a northeasterly direction through Sections 30, 19, 20, 17, 8, 9 and 4-T97N-R42W to the junction of Iowa 60 (approximately 1344 feet south of the N ¼ Corner Section 4-T97N-R42W) to county jurisdiction on June 1, 2007.

New description - Unsigned Iowa 404 and its extensions in O'Brien County described as follows:

Sheldon:

Beginning on the O'Brien-Sioux County line at a point approximately 1684 feet south of the NW Corner Section 6-T96N-R42W (NE Corner Section 1-T96N-R43W, Sioux County) (west corporation line of Sheldon connecting with 2nd Avenue); thence northeasterly on 2nd Avenue to the north corporation line (approximately 1740 feet north of the S ¼ Corner Section 30-T97N-R42W).



OFFICIAL DESCRIPTION CHANGE

OFFICE: Transportation Data

EFFECTIVE DATE: 10-06-2006

ENTERED BY: Darlene Bovee

ENTERED DATE: 08-29-2007

Due to the new bypass of Iowa 60 around Sheldon, Old Iowa 60 was designated Unsigned Iowa 404 and the description should be added to reflect this.

New description – Unsigned Iowa 404 and its extensions in O'Brien County described as follows:

Sheldon:

Beginning on the O'Brien-Sioux County line at a point approximately 1684 feet south of the NW Corner Section 6-T96N-R42W (NE Corner Section 1-T96N-R43W, Sioux County) (west corporation line of Sheldon connecting with 2nd Avenue); thence northeasterly on 2nd Avenue to the north corporation line (approximately 1740 feet north of the S $\frac{1}{4}$ Corner Section 30-T97N-R42W).

Beginning on the north corporation line of Sheldon connecting with 2nd Avenue; thence in a northeasterly direction through Sections 30, 19, 20, 17, 8, 9 and 4-T97N-R42W to the junction of Iowa 60 (approximately 1344 feet south of the N $\frac{1}{4}$ Corner Section 4-T97N-R42W).

