

OFFICIAL DESCRIPTION CHANGE

OFFICE: Transportation Data

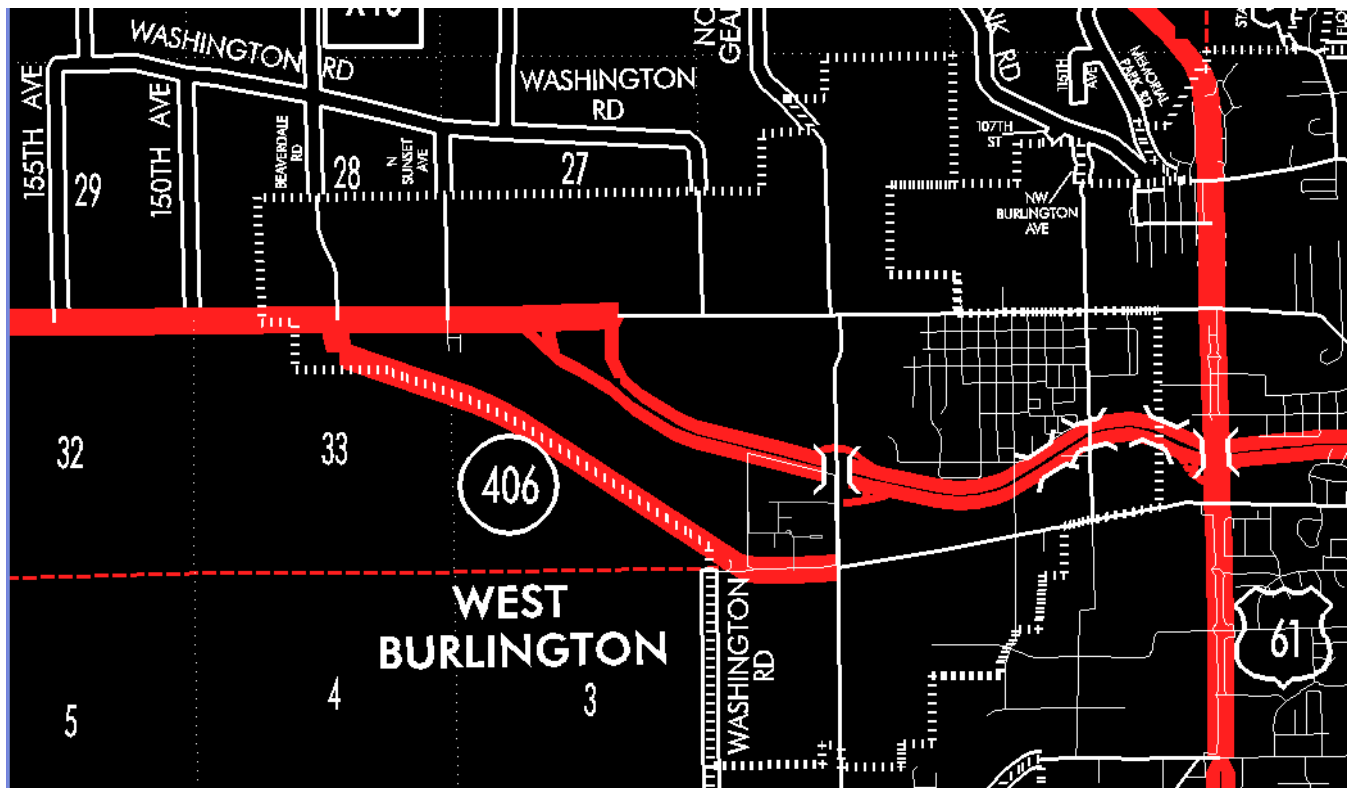
EFFECTIVE DATE: 07-01-2003

ENTERED BY: Stefani Wonders

ENTERED DATE: 08-22-2006

DISCUSSION/BACKGROUND:

Senate File 451 transferred Iowa 406 in its entirety, in Des Moines County, to city and county jurisdiction on July 1, 2003.



OFFICIAL DESCRIPTION CHANGE

COUNTY: Des Moines

ROUTE: Iowa 406

COMMISSION ORDER NUMBER: S-87-704

APPROVAL DATE: 12-18-86

New Description Iowa 406 and its extension in Des Moines County described as follows:

West Burlington:

Beginning on an unnamed street at the junction of US 34; thence south and southeast to the south corporation line.

Beginning again on the south corporation line of West Burlington connecting with an unnamed street; thence southeast through Sections 33 and 34-T70N-R3W to the west corporation line of West Burlington.

West Burlington:

Beginning on an unnamed street at the west corporation line; thence southeast on unnamed street to Agency Road; thence east on Agency Road to the intersection of South Gear Avenue.

COMMISSION ORDER

DIVISION: Planning & Research

COMMISSION ORDER NUMBER: PR-82-102

SUBMITTED BY: Patrick R. Cain

MEETING DATE: 8-4-81

DISCUSSION/BACKGROUND:

Iowa 406 begins at US 34 near the City of West Burlington, and travels southeasterly and northerly to another junction with US 34 in the City of West Burlington.

Transfer of jurisdiction agreement number TJ-406-0 (1), between the City of West Burlington and the Iowa Department of Transportation, transferred that portion of Iowa 406 in the City of West Burlington on Gear Avenue from Agency Road to US 34 to city jurisdiction on February 1, 1981.

PROPOSAL/ACTION RECOMMENDATION:

It is recommended the commission approve deleting the present description of Iowa 406 in Des Moines County from the primary road system and approve including the attached new description of Iowa 406 in the primary road system.

Locate Iowa 406 and its extension in Des Moines County as follows:

(NOTE: It begins in West Burlington; thence thru Sections 33 & 34 to West Burlington.)

Beginning at a point approximately 350 feet east of the N $\frac{1}{4}$ Corner of Section 33-T70N-R3W (junction of US 34); thence in a southeasterly direction through Sections 33 and 34-T70N-R3W to the west corporation line of the City of West Burlington Connecting with an unnamed street.

West Burlington:

Beginning on the west corporation line connecting with an unnamed street; thence southeasterly and easterly to Gear Avenue.

REVISED: 12-18-86

COMMISSION ORDER

DIVISION: Planning & Research

COMMISSION ORDER NUMBER: PR-79-272

SUBMITTED BY: C.I. MacGillivray

MEETING DATE: 11-2-78

DISCUSSION/BACKGROUND:

Due to the relocation of Iowa 406 in West Burlington it should be deleted from the Primary Road System and the new description added should be officially included into the Primary Road System. A portion of the old alignment should revert to the Municipal Street System of West Burlington in accordance with agreement number 75-3-006 between the State of Iowa and West Burlington

and another portion should revert to the Municipal Street System of Burlington, Iowa.

Iowa 406 begins at the junction of US 34 west of West Burlington and travels southeasterly and northerly terminating at the junction of relocated US 34 in West Burlington, Iowa

PROPOSAL/ACTION RECOMMENDATION:

Locate Iowa 406 and its extension in Des Moines County as follows:

Beginning at a point approximately 350 feet east of the N $\frac{1}{4}$ Corner of Section 33-T70N-R3W (junction of US 34); thence in a southeasterly direction through Sections 33 and 34-T70N-R3W to the west corporation line of the City of West Burlington connecting with an unnamed street.

West Burlington:

Beginning on the west corporation line connecting with an unnamed street; thence southeasterly, easterly, and northerly to the junction of relocated US 34.

NOTE: That portion of the old alignment of Iowa 406 in West Burlington on Agency Road from Gear Avenue to the east corporation line shall revert to the Municipal Street System of West Burlington in accordance with agreement 75-3-006 between the State of Iowa and West Burlington.

Also, that portion of Agency Road from the west corporation line of Burlington (East corporation line of West Burlington) to the east corporation line of Burlington and another portion of agency road from the west corporation line of Burlington to the junction of US 61 will revert to the Municipal Street System of Burlington, Iowa.

NOW, THEREFORE: Be it resolved that the Iowa Department of Transportation approve the location of Iowa 406 in Des Moines County, Iowa.

REVISED: 8-4-81

COMMISSION ORDER

DIVISION: Planning & Research

COMMISSION ORDER NUMBER: PR-77-318

SUBMITTED BY: Raymond L. Kassel

MEETING DATE: 1-11-77

DISCUSSION/BACKGROUND:

The legal Primary Road descriptions are being revised to reflect changes in corporation limits, Primary Road Relocations, and miscellaneous other actions that affect Primary Road changes.

- 1. Corporation Limits 0
- 2. Primary Road Relocations 4
- 3. General Review* 0
- 4. By Agreement 0

General Review consists of:

- 1. To tie rural descriptions to all township, range, and sections
- 2. To correct references to junctions and intersections
- 3. To correct erroneous descriptions
- 4. Remove reference to city street names so a new description is not needed when a corporation line changes
- 5. To create a continuous description through a county from west to east or south to north

PROPOSAL/ACTION RECOMMENDATION:

We recommend the Commission approve Primary Road description changes as filed. This action keeps the records current on the official primary log.

COMMISSION ORDER

DIVISION: Planning & Research

SUBMITTED BY: Raymond L. Kassel

MEETING DATE: 1-11-77

DISCUSSION/BACKGROUND:

Due to the relocation of Iowa 406 in West Burlington it should be deleted from the Primary Road System and the new description added should be officially included into the Primary Road System. A portion of the old alignment should revert to the Municipal Street System of West Burlington in accordance with agreement number 75-3-006 between the State of Iowa and West Burlington and another portion should revert to the Municipal Street System of Burlington, Iowa.

Iowa 406 begins at the junction of US 34 west of West Burlington and travels southeasterly and northerly terminating at the junction of relocated US 34 in West Burlington, Iowa.

PROPOSAL/ACTION RECOMMENDATION:

Locate Iowa 406 and its extension in Des Moines County as follows:

Beginning at a point approximately 350 feet east of the N $\frac{1}{4}$ Corner of Section 33-T70N-R3W (junction of US 34); thence in a southeasterly direction through Sections 33 and 34-T70N-R3W to the west corporation line of the City of West Burlington connecting with an unnamed street.

West Burlington:

Beginning on the west corporation line connecting with an unnamed street; thence southeasterly, easterly, and northerly to the junction of relocated US 34.

NOTE: That portion of the old alignment of Iowa 406 in West Burlington on Agency Road from Gear Avenue to the east corporation line shall revert to the Municipal Street System of West Burlington in accordance with agreement 75-3-006 between the State of Iowa and West Burlington.

Also, that portion of Agency Road from the west corporation line of Burlington (East corporation line of West Burlington) to the east corporation line of Burlington and another portion of agency road from the west corporation line of Burlington to the junction of US 61 will revert to the Municipal Street System of Burlington, Iowa.

NOW, THEREFORE: Be it resolved that the Iowa Department of Transportation approve the location of Iowa 406 in Des Moines County, Iowa.

NOTE: To become effective December 31, 1976.

COMMISSION RESOLUTION

DIVISION: Planning & Research

COMMISSION ORDER NUMBER: 73-1612

SUBMITTED BY: Gene R. Mills

MEETING DATE: 12-19-73

Locate Iowa 406 in Des Moines County as follows:

West Burlington:

Beginning on Agency Street at the west corporation line of West Burlington; thence easterly and northeasterly on Agency Street to the east corporation line of West Burlington (west corporation line of Burlington).

NOW, THEREFORE: Be it resolved that the Iowa State Highway Commission approve the location of the extension of Iowa 406 in Des Moines County, Iowa.

NOTE: To become effective upon adoption of this resolution.

OFFICIAL DESCRIPTION CHANGE

COUNTY: Des Moines

CITY OF: West Burlington

ROUTE: Iowa 406

APPROVAL DATE: 12-19-73

Beginning on Agency Street at the west corporation line of West Burlington; thence easterly and northeasterly on Agency Street to the east corporation of West Burlington (west corporation line of Burlington).

OFFICIAL DESCRIPTION CHANGE

COUNTY: Des Moines

ROUTE: Iowa 406

APPROVAL DATE: 10-4-57

Beginning at a point near the N $\frac{1}{4}$ Corner of Section 33-T70N-R3W; thence in a southeasterly direction through Section 33, 34, and 35-T70N-R3W to a point approximately 900 feet east of the SW Corner of Section 35-T70N-R3W; thence east to a point near the S $\frac{1}{4}$ Corner of

Section 35-T70N-R3W; thence in a northeasterly direction through Section 35 and 36-T70N-R3W to the west corporation line of the City of Burlington connecting with Agency Street.

Beginning again on the east corporation line of the City of Burlington on the Extension of Agency Street; thence northeasterly and easterly to the west corporation line of the City of Burlington at the intersection of Agency Street and Roosevelt Avenue (US 61).

OFFICIAL DESCRIPTION CHANGE

COUNTY: Des Moines

CITY OF: Burlington

ROUTE: Iowa 406

APPROVAL DATE: 3-5-57

Beginning on the west corporation line of the City of Burlington on Agency Street; thence northeasterly on Agency Street to the east corporation line.

NOTE: See letter of October 4, 1957, for revision of route from Iowa 80 to Iowa 406.