

OFFICIAL DESCRIPTION CHANGE

OFFICE: Transportation Data

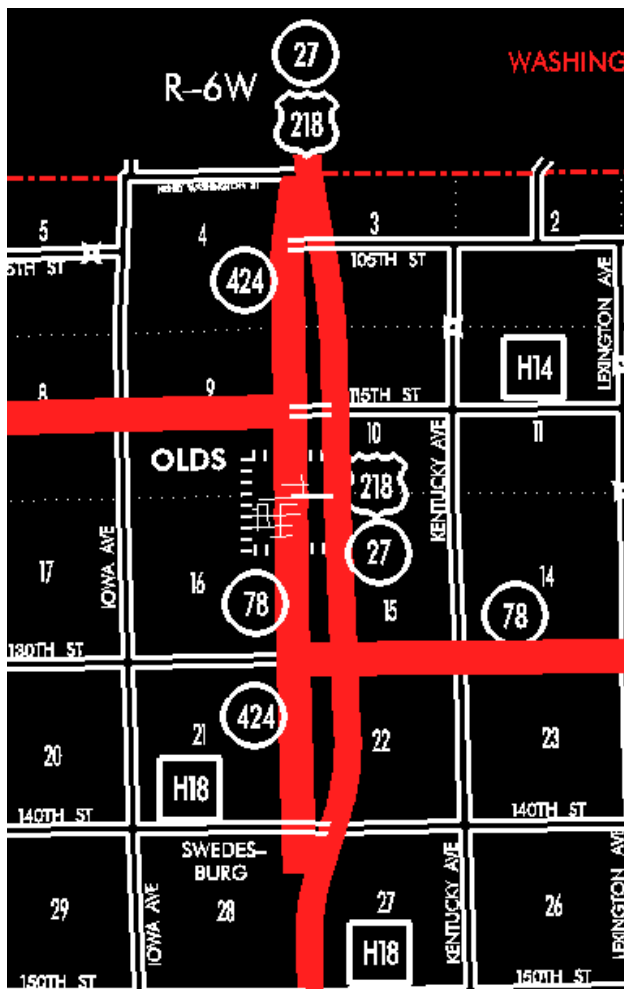
EFFECTIVE DATE: 07-01-2003

ENTERED BY: Stefani Wonders

ENTERED DATE: 08-22-2006

DISCUSSION/BACKGROUND:

Senate File 451 transferred Unsigned Iowa 424 in its entirety, in Henry County, to city and county jurisdiction on July 1, 2003.



STAFF ACTION

OFFICE: Transportation Inventory

STAFF ACTION NUMBER: S-01-0612

SUBMITTED BY: Patrick R. Cain

SUBMITTAL DATE: 01-16-2001

DISCUSSION/BACKGROUND:

New Description- Iowa 424 and its extensions in Henry County described as follows:

Beginning approximately 1450 feet south of NW Corner Section 27-T73N-R6W on section line; thence northerly through Sections 27, 22 (south junction Iowa 78), and 15-T73N-R6W to the south corporation line of Olds (approximately 3560 feet north of SE Corner Section 15-T73N-R6W) connecting with Main Street.

Olds:

Beginning on Main Street at the south corporation line (approximately 3560 feet north of SE Corner Section 15-T73N-R6W); thence north on Main Street to the north corporation line (approximately 1380 feet south of NE Corner Section 10-T73N-R6W)

Beginning again on the north corporation line of Olds (approximately 1380 feet south of NE Corner Section 10-T73N-R6W) connecting with Main Street; thence north following substantially the section line of Sections 10 (west junction Iowa 76) and 3-T73N-R6W to a point near the W $\frac{1}{4}$ Corner Section 3-T73N-R6W; thence in a northeasterly direction to the Henry-Washington County line (junction US 218) at a point approximately 400 feet east of the NW Corner Section 3-T73N-R6W, Henry County (SW Corner Section 34-T74N-R6W, Washington County).

PROPOSAL/ACTION RECOMMENDATION

It is recommended to approve adding the description of Unsigned Iowa 424 in Henry County to the Primary Road System.