

OFFICIAL DESCRIPTION CHANGE

OFFICE: Transportation Data

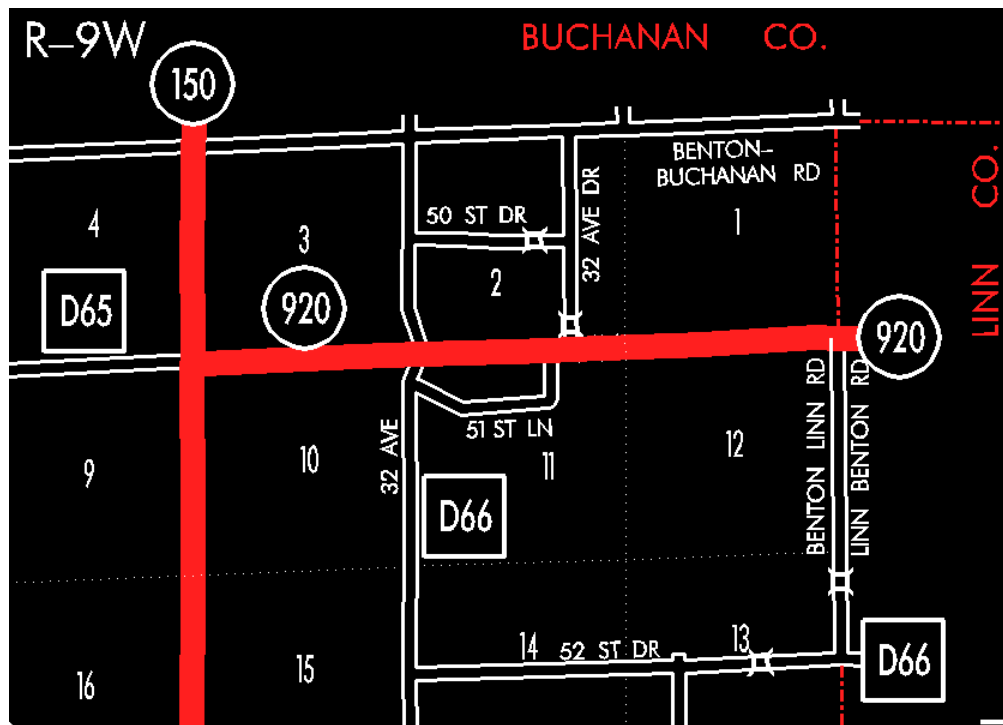
EFFECTIVE DATE: 07-01-2003

ENTERED BY: Stefani Wonders

ENTERED DATE: 08-24-2006

DISCUSSION/BACKGROUND:

Senate File 451 transferred Unsigned Iowa 920 in its entirety, in Benton County, to county jurisdiction on July 1, 2003.



STAFF ACTION

OFFICE: Transportation Inventory

STAFF ACTION NUMBER: S-85-408

SUBMITTED BY: Patrick R. Cain

APPROVAL DATE: 10-18-84

DISCUSSION/BACKGROUND:

Interstate 380 was opened to traffic to an interchange with Iowa 101 north of Urbana on August 14, 1984. In conjunction with this opening Iowa 101 was re-designated as a portion of Iowa 150. That portion of Iowa 150 from the Benton–Linn County line west to the junction of former Iowa 101 and Iowa 150 should be re-designated, as Unsigned Iowa 920 and its description should be added to the Primary Road System to reflect this re-designation.

Iowa 920 begins at the Benton–Linn County line approximately four (4) miles north and two (2) miles east of Urbana and travels west and northwest to a junction with Iowa 150 approximately four (4) miles north of Urbana.

PROPOSAL/ACTION RECOMMENDATION:

It is recommended to approve adding the description of Unsigned Iowa 920 in Benton County to the Primary Road System.

New Description – Unsigned Iowa 920 in Benton County described as follows:

Beginning at the Benton–Linn County line at a point near the NE Corner of Section 12–T86N–R9W, Benton County (NW Corner Section 7–T86N–R8W, Linn County); thence west following substantially the section line of Sections 12, 11, and 10–T86N–R9W–to a point near the NW Corner Section 10–T86N–R9W (junction Iowa 150).