

OFFICIAL DESCRIPTION CHANGE

OFFICE: Transportation Data

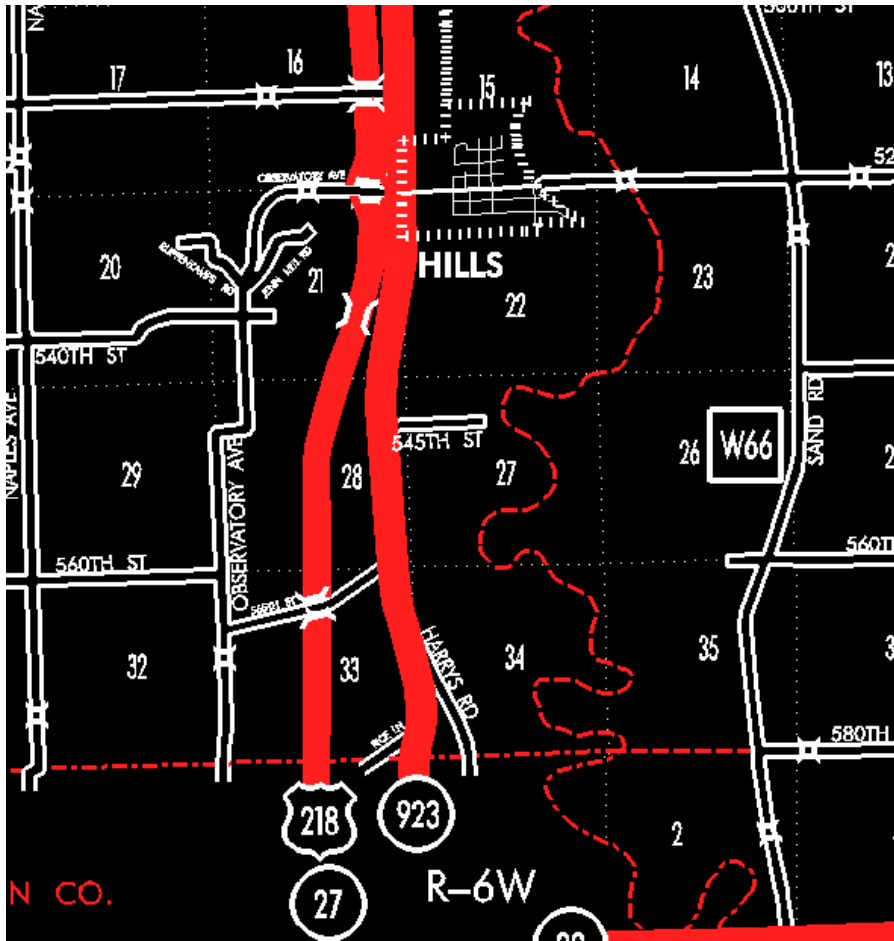
EFFECTIVE DATE: 07-01-2003

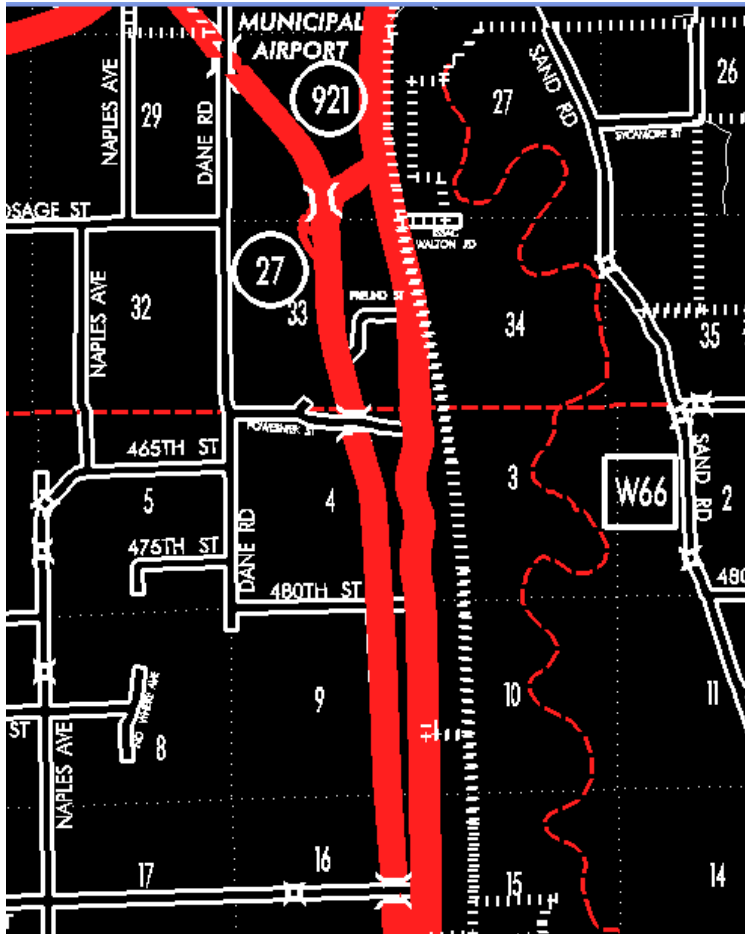
ENTERED BY: Stefani Wonders

ENTERED DATE: 08-23-2006

DISCUSSION/BACKGROUND:

Senate File 451 transferred Unsigned Iowa 923 in its entirety, in Johnson County, to county jurisdiction on July 1, 2003.





STAFF ACTION

OFFICE: Transportation Inventory

STAFF ACTION NUMBER: S-87-1371

SUBMITTED BY: Patrick R. Cain

SUBMITTAL DATE: 4-17-87

DISCUSSION/BACKGROUND:

US 218 has been relocated from the Johnson-Washington County line north and northwest to an interchange with Interstate 80 and Interstate 380 in Johnson County. The final segment from the Indian Hills Interchange northwesterly to a junction with Interstate 380 was opened

to traffic on June 26, 1985, and was functionally classified under the State Functional Classification System on November 25, 1986. The old portion of US 218 from the Johnson–Washington County line north to a junction with Unsigned Iowa 921 in the SE ¼ of Section 28–T79N–R6W should be re–designated as Unsigned Iowa 923 and its description included in the Primary Road System to reflect this re–designation.

Unsigned Iowa 923 begins at the Johnson–Washington County line approximately three (3) miles south of the City of Hills and travels northerly to a junction with Unsigned Iowa 921 approximately one (1) mile south of Iowa City.

PROPOSAL/ACTION RECOMMENDATION:

It is recommended to approve adding the description of Unsigned Iowa 923 in Johnson County to the Primary Road System.

New Description – Unsigned Iowa 923 in Johnson County described as follows:

Beginning on the Johnson–Washington County line at a point near the SE Corner Section 33–T78N–R6W, Johnson County (NE Corner of Section 4–T77N–R6W, Washington County); thence in a northerly direction through the west part of Section 34–T78N–R6W and the east part of Sections 33, 28, and 21–T78N–R6W to a point approximately 700 feet north of the E ¼ Corner of Section 21–T78N–R6W; thence north following substantially the section line of Sections 22, 15, and 10–T78N–R6W to a point near the NE Corner of Section 9–T78N–R6W; thence in a northerly direction through Section 4–T78N–R6W, and Sections 34, 33, 28–T79N–R6W to a junction with Unsigned Iowa 921 in the SE ¼ of Section 28–T79N–R6W.