

OFFICIAL DESCRIPTION CHANGE

OFFICE: Transportation Data

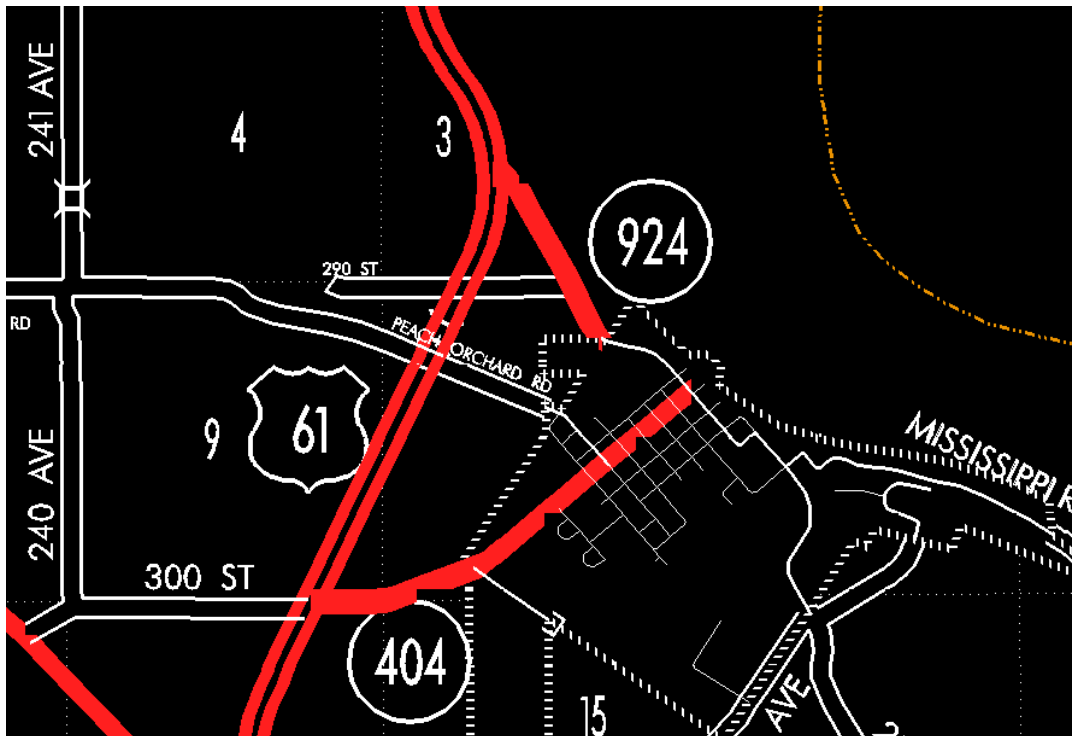
EFFECTIVE DATE: 07-01-2003

ENTERED BY: Stefani Wonders

ENTERED DATE: 08-21-2006

DISCUSSION/BACKGROUND:

Senate File 451 transferred Unsigned Iowa 924 in its entirety, in Lee County, to county jurisdiction on July 1, 2003.



STAFF ACTION

OFFICE: Transportation Data

STAFF ACTION NUMBER: S-96-1265

SUBMITTED BY: Patrick R. Cain

SUBMITTAL DATE: 3-4-96

DISCUSSION/BACKGROUND:

Due to the way the 900 routes are numbered, Unsigned Iowa 998 was renumbered Unsigned Iowa 924 in 1994.

PROPOSAL/ACTION RECOMMENDATION:

It is recommended that Unsigned Iowa 924 in Lee County, as described in the attachment, be added to the Primary Road System.

New Description – Unsigned Iowa 924 in Lee County described as follows:

Beginning on the northwest corporation line of Montrose connecting with 1st Street; thence in a northwesterly direction through Sections 10 and 3–T66N–R5W to a point approximately 1900 feet north and 1900 feet east of the SW Corner Section 30–T66N–R5W (junction US 61).