

## OFFICIAL DESCRIPTION CHANGE

OFFICE: Transportation Data

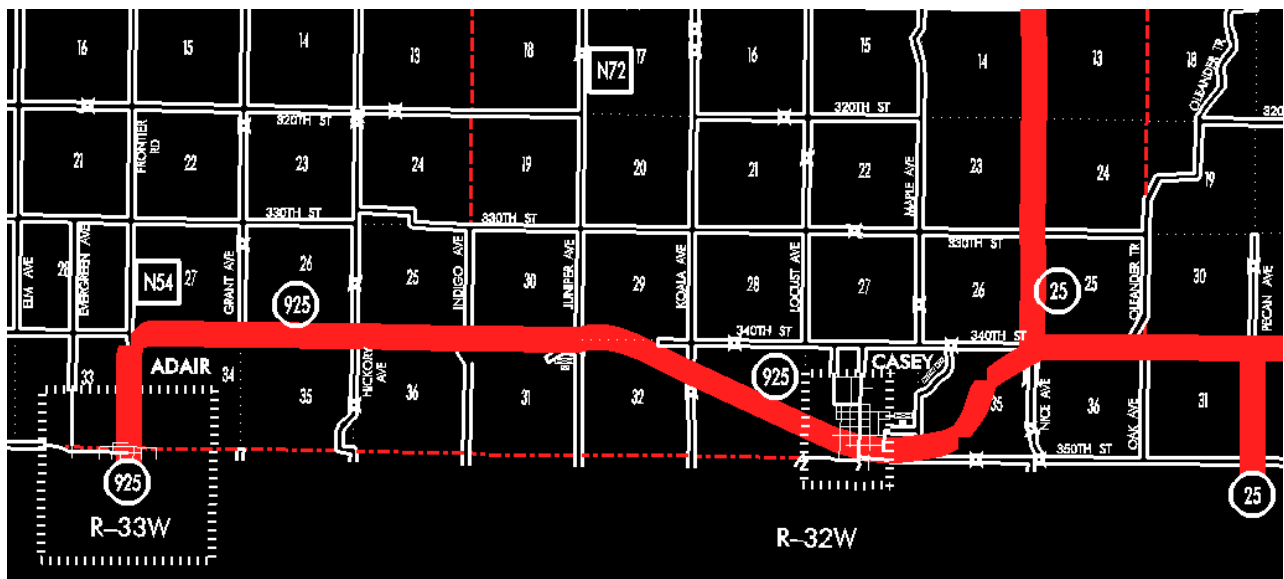
EFFECTIVE DATE: 07-01-2003

ENTERED BY: Stefani Wonders

ENTERED DATE: 08-23-2006

## DISCUSSION/BACKGROUND:

Senate File 451 transferred Unsigned Iowa 925 in its entirety, in Guthrie County, to city and county jurisdiction on July 1, 2003.





New Description – Unsigned Iowa 925 in Guthrie County described as follows:

Adair:

Beginning on 5th Street (Guthrie–Adair County line); thence north on 5<sup>th</sup> Street to the north corporation line.

Beginning on the north corporation line of Adair connecting with 5th Street; thence north following substantially the section line of Section 34–T78N–R33W to a point approximately 1,100 feet south of the NW Corner Section 34–T78N–R33W; thence curving in a northeasterly direction to a point approximately 1,100 feet east of the NW Corner Section 34–T78N–R33W; thence east following substantially the section line of Sections 34, 35 and 36–T78N–R33W and Section 31–T78N–R32W to a point approximately 150 feet west of the NE Corner Section 31–T78N–R32W; thence in a northeasterly and southeasterly direction through Sections 30, 29, 32 and 33–T78N–R32W to the west corporation line of Casey connecting with Sherman Street.

Casey:

Beginning on Sherman Street at the west corporation line; thence southeast on Sherman Street to the east corporation line.

Beginning again on the east corporation line of Casey, connecting with Sherman Street; thence in an easterly and northeasterly direction through Section 34 and 35–T78N–R32W to a point near the center of Section 35–T78N–R32W; thence in a northeasterly direction through Sections 35 and 36–T78N–R32W to a point approximately 800 feet east of The NW Corner Section 36–T78N–R32W (west junction Iowa 25); thence east following substantially the section lines of Sections 36–T78N–R32W and 31–T78N–R31W to the NW Corner Section 32–T78N–R31W (east junction Iowa 25). Then continuing east following substantially the section line of Sections 32, 33 and 34–T78N–R31W to the west corporation line of Menlo, connecting with 7th Street.

Menlo:

Beginning on 7th Street at the west corporation line; thence east on 7th Street to the east corporation line.

Beginning again on the east corporation line of Menlo, connecting with 7th Street; thence east following substantially the section line of Sections 34, 35 and 36-T78N-R31W to a point near the NW Corner Section 36-T78N-R31W; thence in a southeasterly direction through the north part of the NW  $\frac{1}{4}$  Section 36-T78N-R31W to a point through the N  $\frac{1}{4}$  Corner Section 36-T78N-R31W; thence in a southeasterly direction through Section 36-T78N-R31W and Section 31 and 32-T78N-R30W to the west corporation line of Stuart, connecting with Front Street.

Stuart:

Beginning on Front Street at the west corporation line; thence east on Front Street to the east corporation line.

Beginning again on the east corporation line of Stuart, connecting with Front Street; thence east along the Guthrie-Adair County line (Sections 33, 34 and 35-T78N-R30W, Guthrie County) (Sections 4, 3 and 2-T77N-R30W, Adair County) to a point approximately  $\frac{1}{4}$  mile east of the SW Corner Section 35-T78N-R30W, Guthrie County (NW Corner Section 2-T77N-R30W, Adair County); thence in a northeasterly direction through Sections 35 and 36-T78N-R30W to the Guthrie-Dallas County line (west corporation line of Dexter) connecting with an unnamed street at a point near the NE Corner Section 36-T78N-R30W, Guthrie County (NW Corner Section 31-T78N-R29W, Dallas County).

**OFFICIAL DESCRIPTION CHANGE**

**COUNTY:** Guthrie

**ROUTE:** Iowa 925

**STAFF ACTION NUMBER:** S-87-713

**APPROVAL DATE:** 12-18-86

New Description – Unsigned Iowa 925 in Guthrie County described as follows:

Adair:

Beginning on 5th Street (Guthrie-Adair County line) then north on 5th Street to the north corporation line.

Beginning on the north corporation line of Adair connecting with 5th Street; thence north following substantially the section line of Section 34-T78N-R33W to a point approximately 1,100 feet south of the NW Corner Section 34-T78N-R33W; thence curving in a northeasterly direction to a point approximately 1,100 feet east of the NW Corner Section 34-T78N-R33W; thence east following substantially the section line of Sections 34, 35, and 36-T78N-R33W and Section 31-T78N-R32W to a point approximately 150 feet west of the NE Corner Section 31-T78N-R32W; thence in a northeasterly and southeasterly direction through Sections 30, 29, 32, and 33-T78N-R32W to the west corporation line of Casey connecting with Sherman Street.

Casey:

Beginning on Sherman Street at the west corporation line; thence southeast an Sherman Street to the east corporation line.

Beginning again on the east corporation line of Casey, connecting with Sherman Street; thence in an easterly and northeasterly direction through Section 34 and 35-T78N-R32W to a point near the center of Section 35-T78N-R32W; thence in a northeasterly direction through Sections 35 and 36-T78N-R32W to a point approximately 800 feet east of the NW Corner Section 36-T78N-R32W (junction Iowa 25).

Beginning again at a point near the NW Corner Section 32-T78N-R31W (junction Iowa 25); thence east following substantially the section line of Sections 32, 33, and 34-T78N-R31W to the west corporation line of Menlo connecting with 7th Street.

Menlo:

Beginning on 7th Street at the west corporation line; thence east on 7th Street to the east corporation line.

Beginning again on the east corporation line of Menlo, connecting with 7th Street; thence east following substantially the section line of Sections 34, 35, and 36-T78N-R31W to a point near the NW Corner Section 36-T78N-R31W; thence in a southeasterly direction through the north part of the NW  $\frac{1}{4}$  Section 36-T78N-R31W to a point near the N  $\frac{1}{4}$  Corner Section 36-T78N-R31W; thence in a southeasterly direction through Section 36-T78N-R31W and Section 31 and 32-T78N-R30W to the west corporation line of Stuart, connecting with Front Street.

Stuart:

Beginning on Front Street at the west corporation line; thence east on Front Street to the east corporation line.

Beginning again on the east corporation line of Stuart, connecting with Front Street; thence east along the Guthrie-Adair County line (Sections 33, 34, and 35-T78N-R30W, Guthrie County) (Sections 4, 3, and 2-T77N-R30W, Adair County) to a point approximately  $\frac{1}{4}$  mile east of the SW Corner Section 35-T78N-R30W, Guthrie County (NW Corner Section 2-T77N-R30W, Adair County); thence in a northeasterly direction through Sections 35 and 36-T78N-R30W to the Guthrie-Dallas County line (west corporation line of Dexter) connecting with an unnamed street at a point near the NE Corner

Section 36–T78N–R30W, Guthrie County (NW Corner Section 31–T78N–R29W, Dallas County).

**COMMISSION ORDER**

**DIVISION:** Planning & Research

**COMMISSION ORDER NUMBER:** PR–81–703

**SUBMITTED BY:** Patrick R. Cain

**MEETING DATE:** 4–28–81

**DISCUSSION/BACKGROUND:**

Due to the relocation of US 6 in Guthrie County, Unsigned Iowa 925 has been created and its description should be officially included in the primary road system.

Unsigned Iowa 925 begins at the Guthrie–Adair County line in the City of Adair and proceeds easterly via the city of Casey to a junction with Iowa 25 approximately two miles northeast of the City of Casey and from another junction with Iowa 25 approximately two and one-half miles west of the City of Menlo easterly via the cities of Menlo and Stuart to the Guthrie–Dallas County line at the City of Dexter.

**PROPOSAL/ACTION RECOMMENDATION:**

It is recommended the commission approve including the attached description of Unsigned Iowa 925 in Guthrie County in the primary road system.

Locate Unsigned Iowa 925 in Guthrie County as follows:

Adair:

Beginning on the Guthrie–Adair County line; thence northerly to the north corporation line connecting with an unnamed street.

Beginning on the north corporation line of the City of Adair connecting with an unnamed street; thence northerly following substantially the section line of Section 34–T78N–R33W to a point approximately 1100 feet south of the NW Corner Section 34–T78N–R33W; thence curving in a northeasterly direction to a point approximately 1100 feet east of the NW Corner Section 34–T78N–R33W; thence easterly following substantially the section line of Sections 34, 35, and 36–T78N–R33W and Section 31–T78N–R32W to a point approximately 150 feet west of the NE Corner Section 31–T78N–R32W; thence in a northeasterly and southeasterly direction through Sections 30, 29, 32, and 33–T78N–R32W to the west corporation line of the City of Casey connecting with an unnamed street.

Casey:

Beginning at the west corporation line, connecting with an unnamed street; thence southeasterly and easterly to the east corporation line connecting with an unnamed street.

Beginning again on the east corporation line of the City of Casey, connecting with an unnamed street; thence in an easterly and northeasterly direction through Section 34 and 35–T78N–R32W to a point near the center of Section 35–T78N–R32W; thence in a northeasterly direction through Sections 35 and 36–T78N–R32W to a point approximately 800 ft. east of the NW Corner Section 36–T78N–R32W (junction Iowa 25).



Beginning again at a point near the NW Corner Section 32-T78N-R31W (junction Iowa 25); thence easterly following substantially the section line of Sections 32, 33, and 34-T78N-R31W to the west corporation line of the City of Menlo connecting with an unnamed street.

Menlo:

Beginning at the west corporation line, connecting with an unnamed street; thence easterly to the east corporation line connecting with an unnamed street.

Beginning again on the east corporation line of the City of Menlo, connecting with an unnamed street; thence easterly following substantially the section line of Sections 34, 35, and 36-T78N-R31W to a point near the NW Corner Section 36-T78N-R31W; thence in a southeasterly and northeasterly direction through the north part of the NW  $\frac{1}{4}$  Section 36-T78N-R31W to a point near the N  $\frac{1}{4}$  Corner Section 36-T78N-R31W; thence in a southeasterly direction through Section 36-T78N-R31W and Section 31 and 32-T78N-R30W to the west corporation line of the City of Stuart, connecting with an unnamed street.

Stuart:

Beginning at the west corporation line, connecting with an unnamed street; thence easterly to the east corporation line, connecting with an unnamed street.

Beginning again on the east corporation line of the City of Stuart, connecting with an unnamed street; thence east along the Guthrie-Adair County line (Sections 33, 34, and 35-T78N-R30W Guthrie County) (Sections 4, 3, and 2-T77N-R30W Adair County) to a point approximately  $\frac{1}{4}$  mile east of the SW Corner Section 35-T78N-R30W Guthrie County (NW Corner Section 2-T77N-R30W Adair County); thence in a northeasterly direction through Sections 35 and 36-T78N-R30W to the Guthrie-Dallas County line (west corporation line of the City of Dexter) connecting with

an unnamed street at a point near the NE Corner Section 36-T78N-R30W  
Guthrie County (NW Corner Section 31-T78N-R29W Dallas County).

REVISED: 12-18-86