

OFFICIAL DESCRIPTION CHANGE

OFFICE: Transportation Data

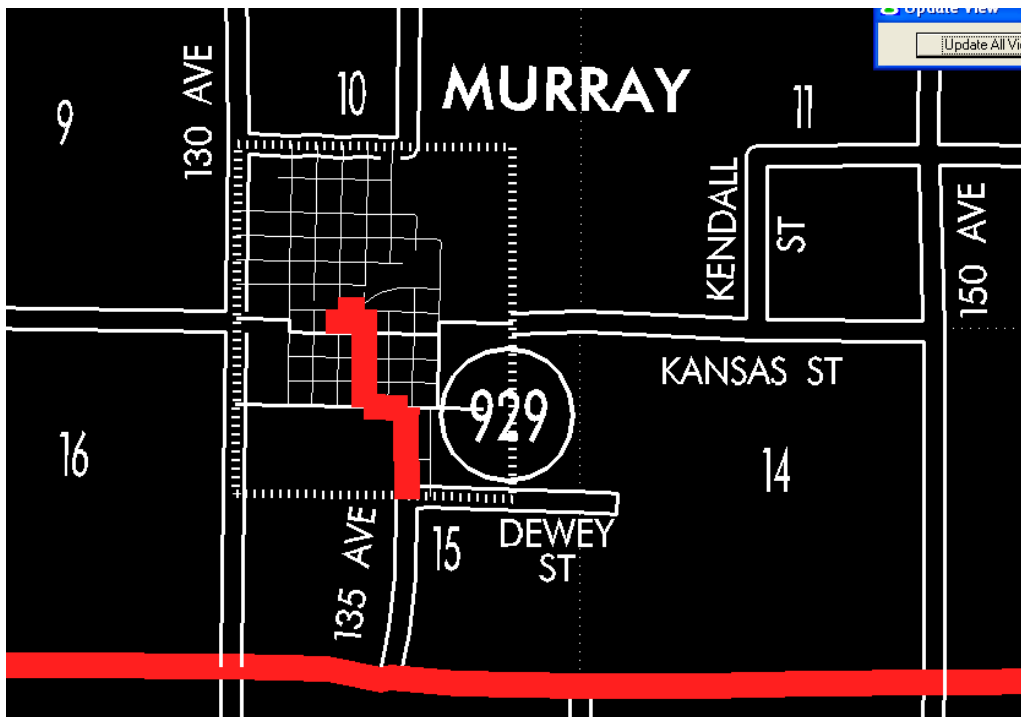
EFFECTIVE DATE: 07-01-2003

ENTERED BY: Stefani Wonders

ENTERED DATE: 08-22-2006

DISCUSSION/BACKGROUND:

Senate File 451 transferred Unsigned Iowa 929 in its entirety, in the City of Murray, to city jurisdiction on July 1, 2003.



OFFICIAL DESCRIPTION CHANGE

COUNTY: Clarke

ROUTE: Unsigned Iowa 929

STAFF ACTION NUMBER: S-87-696

APPROVAL DATE: 12-18-86

New Description – Unsigned Iowa 929 in Clarke County described as follows:

Murray:

Beginning at the south corporation line connecting with an unnamed street; then north on said unnamed street to 1st Street; then west on 1st Street to Grant Street; then north on Grant Street to 5th Street; then west on 5th Street to Maple Street; then south on Maple Street to the north line of 4th Street.

COMMISSION ORDER

DIVISION: Planning & Research

COMMISSION ORDER NUMBER: PR-82-20

SUBMITTED BY: Patrick R. Cain

MEETING DATE: 7-7-81

DISCUSSION/BACKGROUND:

Transfer of jurisdiction agreement number TJ-152-0 (1), between the Iowa Department of Transportation and Clarke County, transferred the portion of Iowa 152 from US 34 to the south corporation line of the City of Murray to county jurisdiction on October 27, 1980. To maintain continuity in the Iowa route numbering system the remaining portion of Iowa 152 in the City of Murray should be re-designated as Unsigned Iowa 929.

Unsigned Iowa 929 begins on the south corporation line of the City of Murray, and travels northerly, westerly, northerly, westerly, and southerly to the north line of Fourth Street.

PROPOSAL/ACTION RECOMMENDATION:

It is recommended the commission approve including the attached new description of Unsigned Iowa 929 in Clarke County in the primary road system.

Locate Unsigned Iowa 929 in Clarke County as follows:

Murray:

Beginning on the south corporation line connecting with an unnamed street; thence northerly, westerly, northerly, westerly, and southerly to the north line of Fourth Street.

REVISED: 12-18-86