

OFFICIAL DESCRIPTION CHANGE

OFFICE: Transportation Data

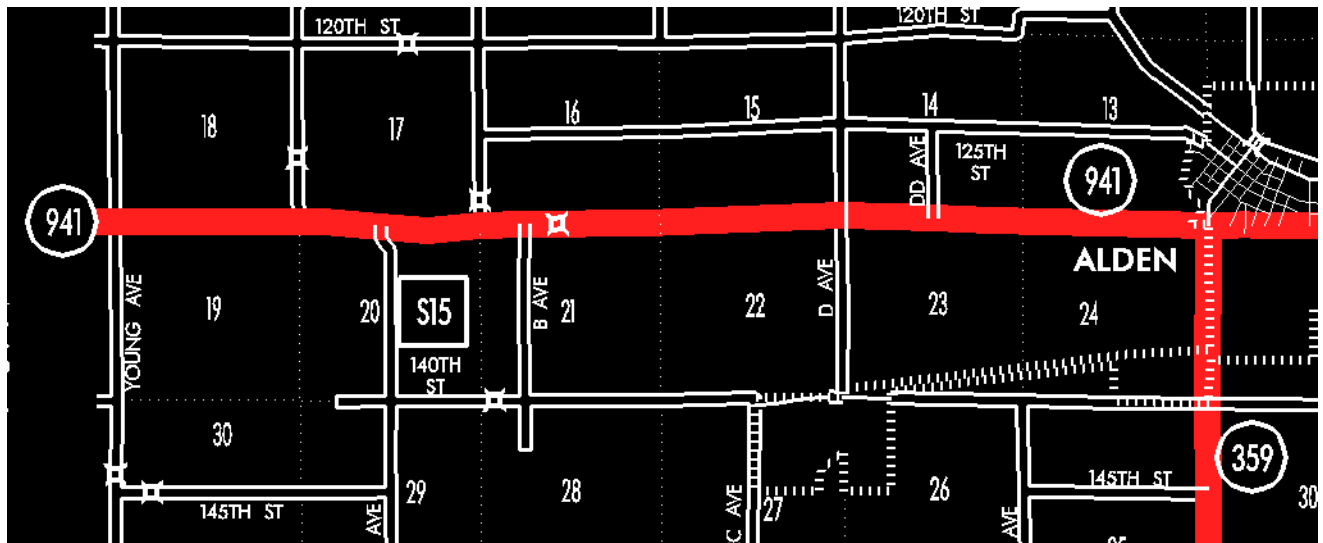
EFFECTIVE DATE: 07-01-2003

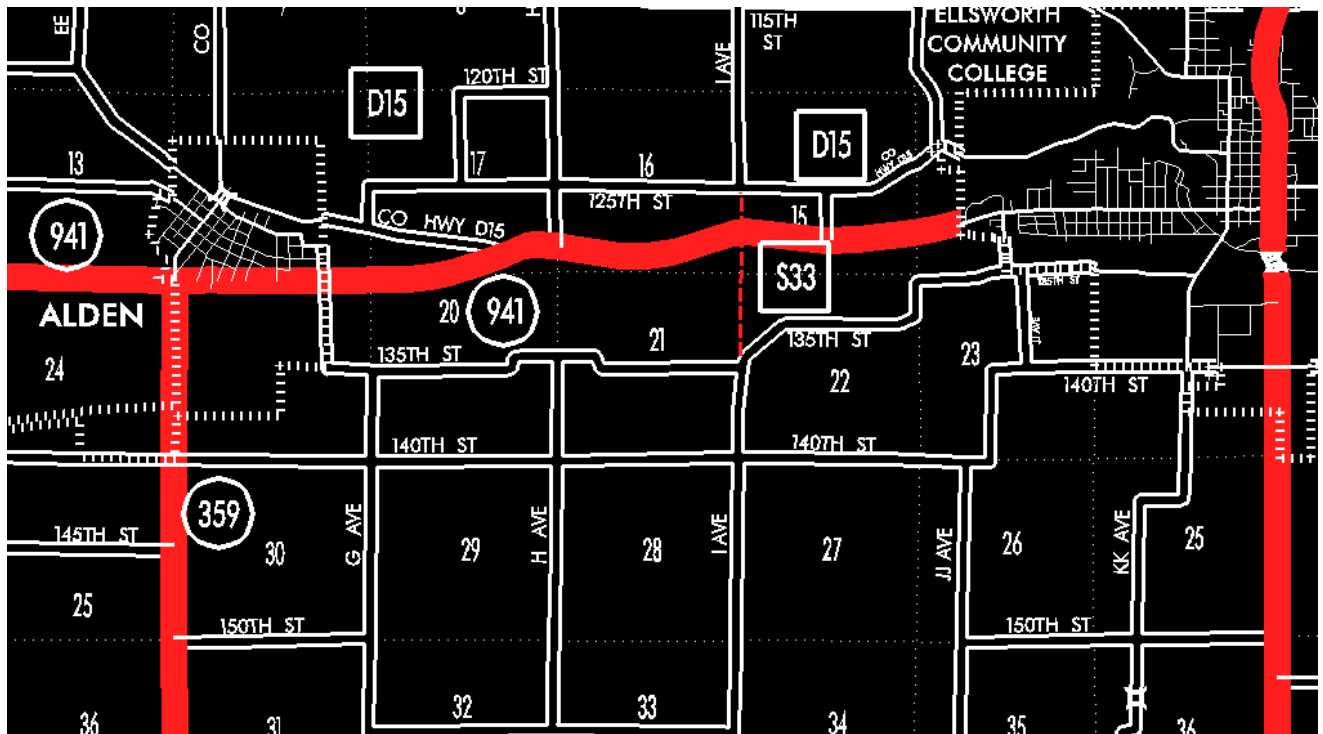
ENTERED BY: Stefani Wonders

ENTERED DATE: 08-28-2006

DISCUSSION/BACKGROUND:

Senate File 451 transferred Unsigned Iowa 941 in its entirety, in Hardin County, to city and county jurisdiction on July 1, 2003.





STAFF ACTION

OFFICE: Transportation Data

STAFF ACTION NUMBER: S-96-1260

SUBMITTED BY: Patrick R. Cain

SUBMITTAL DATE: 2-1-96

DISCUSSION/BACKGROUND:

Transfer of jurisdiction agreement number 94-TJ-002 between the Iowa Department of Transportation and the City of Iowa Falls transferred unsigned Iowa 941 to the City of Iowa Falls, February 11, 1994 and should be removed from the Primary Road System.

Beginning at the Hamilton–Hardin County line, unsigned Iowa 941 extends eastward approximately twelve miles to junction with US 20 and US 65 in Iowa Falls.

PROPOSAL/ACTION RECOMMENDATION:

It is recommended that the old description of unsigned Iowa 941 in Hardin County be deleted from the Primary Road System and the new description, as described in the attachment, be included in the Primary Road System.

New Description – Unsigned Iowa 941 and its extensions in Hardin County described as follows:

Beginning on the Hardin–Hamilton County line at a point near the NW Corner of Section 19–T89N–R22W, Hardin County (NE Corner of Section 24–T89N–R23W, Hamilton County); thence east following substantially the section line to a point near the NE Corner Section 19–T89N–R22W; thence in an easterly direction through the north part of Section 20 and 21–T89N–R22W to a point near the N $\frac{1}{4}$ Corner of the NW $\frac{1}{4}$ Section 21–T89N–R22W; thence easterly following substantially the section line of Section 21, 22, 23 and 24–T89N–R22W to the west corporation line of Alden, connecting with Grand Avenue.

Alden:

Beginning on Grand Avenue at the west corporation line; thence east on Grand Avenue to the east corporation line.

Beginning again on the east corporation line of Alden, connecting with Grand Avenue; thence easterly following substantially the section line of Section 19 and 20–T89N–R21W to a point approximately 900 feet east of the NW Corner of Section 20–T89N–R21W; thence in a northeasterly direction through the south part of Section 17–T89N–R21W to a point on the north side of the Chicago Northwestern Railway approximately 800 feet north of the SE Corner of Section 17–T89N–R21W; thence in an easterly direction along the north side of said

railroad and substantially parallel thereto through Section 16, 15 and 14-T89N-R21W to the west corporation line of Iowa Falls connecting with Washington Avenue.

STAFF ACTION

OFFICE: Transportation Inventory

STAFF ACTION NUMBER: S-93-645

SUBMITTED BY: Patrick R. Cain

SUBMITTAL DATE: 10-19-92

DISCUSSION/BACKGROUND:

Due to the relocation of US 20 in Hardin County the former route of US 20 has been re-designated, as unsigned Iowa 941 and its description should be officially included in the primary road system.

Beginning at the Hamilton-Hardin County line, unsigned Iowa 941 extends eastward approximately twelve miles to junction with US 20 and US 65 in Iowa Falls.

PROPOSAL/ACTION RECOMMENDATION:

It is recommended to approve the inclusion of the attached description of unsigned Iowa 941 in the Primary Road System.

New Description – Unsigned Iowa 941 and its extensions in Hardin County described as follows:

Beginning on the Hardin-Hamilton County Line at a point near the NW Corner of Section 19-T89N-R22W, Hardin County (NE Corner of Section 24-T89N-R23W, Hamilton County); thence east following substantially the section line to a point

near the NE Corner Section 19–T89N–R22W; thence in an easterly direction through the north part of Section 20 and 21–T89N–R22W to a point near the N $\frac{1}{4}$ Corner of the NW $\frac{1}{4}$ Section 21–T89N–R22W; thence easterly following substantially the section line of Section 21, 22, 23, and 24–T89N–R22W to the west corporation line of Alden, connecting with Grand Avenue.

Alden:

Beginning on Grand Avenue at the west corporation line; thence east on Grand Avenue to the east corporation line.

Beginning again on the east corporation line of Alden, connecting with Grand Avenue; thence easterly following substantially the section line of Section 19 and 20–T89N–R21W to a point approximately 900 feet east of the NW Corner Section 20–T89N–R21W; thence in a northeasterly direction through the south part of Section 17–T89N–R21W to a point on the north side of the Chicago Northwestern Railway approximately 800 feet north of the SE Corner Section 17–T89N–R21W; thence in an easterly direction along the north side of said railroad and substantially parallel thereto through Section 16, 15, and 14–T89N–R21W to the west corporation line of Iowa Falls connecting with Washington Avenue.

Iowa Falls:

Beginning on Washington Avenue at the west corporation line; thence east on Washington Avenue to Oak Street (junction US 20 and US 65).