

OFFICIAL DESCRIPTION CHANGE

OFFICE: Transportation Data

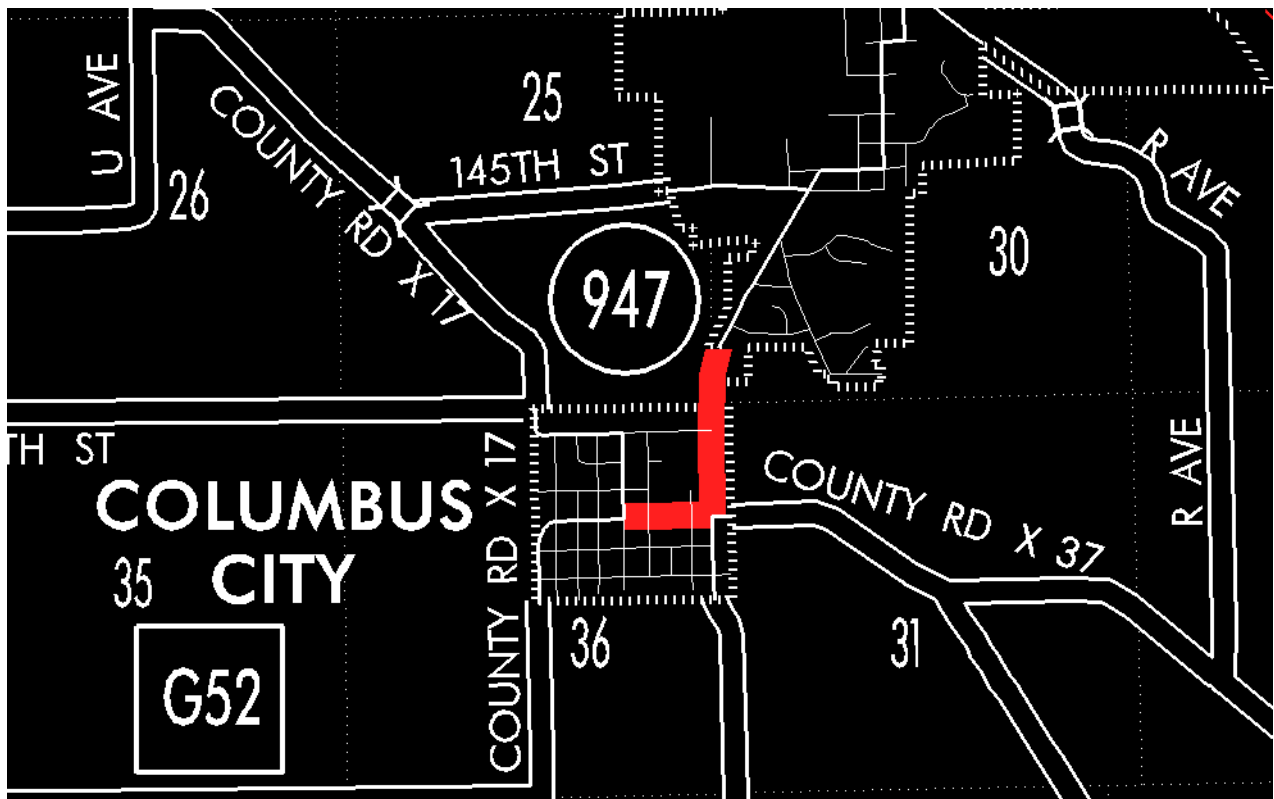
EFFECTIVE DATE: 07-01-2003

ENTERED BY: Stefani Wonders

ENTERED DATE: 08-23-2006

DISCUSSION/BACKGROUND:

Senate File 451 transferred Unsigned Iowa 947 in its entirety, in Columbus City, to city jurisdiction on July 1, 2003.



STAFF ACTION

OFFICE: Transportation Inventory

STAFF ACTION NUMBER: S-98-0946

SUBMITTED BY: Patrick R. Cain

SUBMITTAL DATE: 03-16-98

DISCUSSION/BACKGROUND:

Transfer of jurisdiction agreement number TJ-70-1 (31) between the Iowa Department of Transportation and the City of Columbus Junction transferred Unsigned Iowa 947 to the City of Columbus Junction December 1, 1997

PROPOSAL/ACTION RECOMMENDATION:

It is recommended the old description of Unsigned Iowa 947 in Louisa County be deleted from the Primary Road System and the new description, as described in the attachment, be added to the Primary Road System.

New Description – Unsigned Iowa 947 and its extension in Louisa County described as follows:

Columbus City:

Beginning at the intersection of Market Street and Columbus Street; thence east on Columbus Street to Spring Street; thence north on Spring Street to the north corporation line.

Beginning again on the north corporation line of Columbus City connecting with Spring Street; thence in a northerly direction through Section 25-T75N-R5W to the south corporation line of Columbus Junction connecting with Colton Street.

STAFF ACTION

OFFICE: Transportation Inventory

STAFF ACTION NUMBER: S-97-0134

SUBMITTED BY: Patrick R. Cain

SUBMITTAL DATE: 07-10-96

DISCUSSION/BACKGROUND:

Due to the relocation of Iowa 70 in 1994, the old section became Unsigned Iowa 947 and the Primary Road System should be revised to reflect this change.

PROPOSAL/ACTION RECOMMENDATION:

It is recommended that Unsigned Iowa 947, as described in the attachment, be added to the Primary Road System.

New description – Unsigned Iowa 947 and its extensions in Louisa County described as follows:

Columbus City:

Beginning at the intersection of Market Street and Columbus Street; thence east on Columbus Street to Spring Street; thence north on Spring Street to the north corporation line.

Beginning again on the north corporation line of Columbus City connecting with Spring Street; thence in a northerly direction through Section 25–T75N–R5W to the south corporation line of Columbus Junction connecting with Colton Street.

Columbus Junction:

Beginning on Colton Street at the south corporation line; thence northeast on Colton Street to Gamble Street; thence east on Gamble Street to Second Street; thence north on Second Street to Maple Street; thence east on Maple Street to Main Street; thence north on Main Street to Walnut Street; thence west on Walnut Street to Second Street; thence northerly on Second Street to Iowa 70.