

**STAFF ACTION**

**OFFICE:** Transportation Inventory

**STAFF ACTION NUMBER:** S-03-0954

**SUBMITTED BY:** Peggi Knight

**SUBMITTAL DATE:** 06-02-2003

**DISCUSSION/BACKGROUND:**

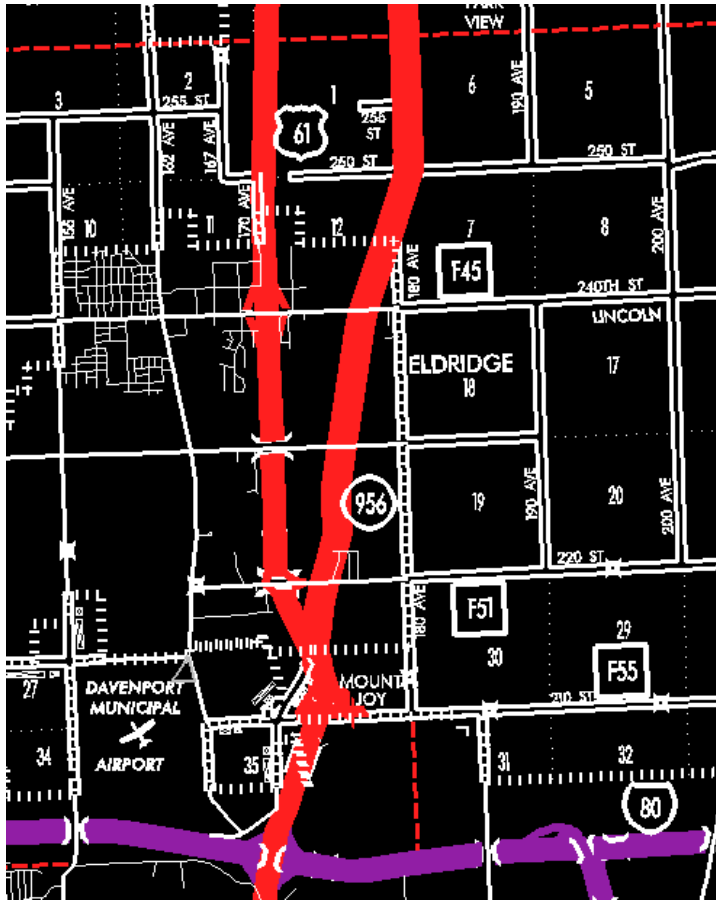
Transfer of jurisdiction agreement number 2003-TJ-013, between Scott County and the Iowa Department of Transportation, transferred that portion of Unsigned Iowa 956 from County Road F-55 at a point approximately 2950 feet east of the SW Corner Section 25-T79N-R3E; thence northwesterly through said Section 25 to the south corporation line of the city of Eldridge to county jurisdiction on May 12, 2003.

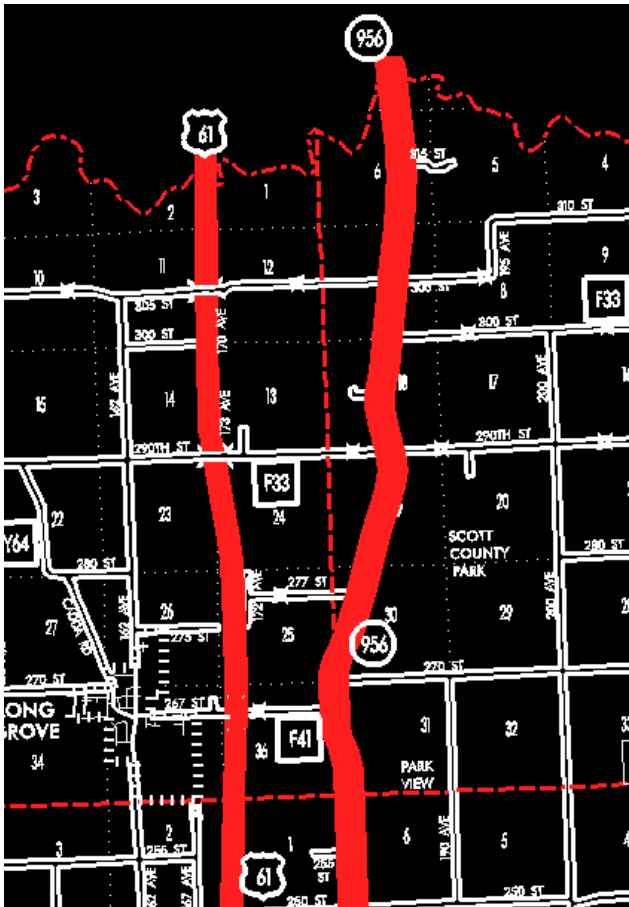
Transfer of jurisdiction agreement number 2003-TJ-015, between the city of Eldridge and the Iowa Department of Transportation, transferred that portion of Unsigned Iowa 956 from the south corporation line; thence in a general northeasterly direction to the north corporation line to city jurisdiction on May 12, 2003.

Transfer of jurisdiction agreement number 2003-TJ-013, between Scott County and the Iowa Department of Transportation, transferred that portion of Unsigned Iowa 956 from the north corporation line of the city of Eldridge; thence in a general northerly direction through Section 12-T79N-R3E, Sections 7 and 6-T79N-R4E, Sections 31, 30, 19, 18, 7, and 6-T80N-R4E, and Section 31-T81N-R4E to the Scott-Clinton County line (Wapsipinicon River) at a point approximately 900 feet south and 900 feet east of the center of Section 31-T81N-R4E to county jurisdiction on May 12, 2003.

**PROPOSAL/ACTION RECOMMENDATION:**

It is recommended to approve deleting the present description of Unsigned Iowa 956 and its extensions in Scott County from the Primary Road System.





#### STAFF ACTION

OFFICE: Transportation Inventory

STAFF ACTION NUMBER: S-86-1109

SUBMITTED BY: Patrick R. Cain

SUBMITTAL DATE: 3-20-86

#### DISCUSSION/BACKGROUND:

US 61 was relocated from a junction with Interstate 80 in Davenport north to the Scott-Clinton County Line near the W  $\frac{1}{4}$  Corner of Section 1-T80N-R3E. The portion of the old alignment from County Road F55 approximately 2,950 feet east of the SW Corner Section 25-T79N-R3E at

a point near the US 61 and County Road F55 interchange north to the Scott-Clinton County Line in the SE ¼ of Section 31-T81N-R4E was functionally classified as Trunk under the State Functional Classification System on May 21, 1985 by the Scott County Functional Classification Board and should be re-designated as Unsigned Iowa 956 and the official description included in the Primary Road System to reflect this change.

Unsigned Iowa 956 begins at County Road F55 near the junction of US 61 and County Road F55 approximately 2,950 feet east of the SW Corner Section 25-T79N-R3E and travels northerly via Eldridge to the Scott-Clinton County Line in the SE ¼ of Section 31-T81N-R4E approximately two miles south of De Witt.

#### **PROPOSAL/ACTION RECOMMENDATION:**

It is recommended to approve adding the description of Unsigned Iowa 956 in Scott County in the Primary Road System.

New Description – Unsigned Iowa 956 and its extension in Scott County described as follows:

Beginning at County Road F-55 at a point approximately 2,950 feet east of the SW Corner Section 25-T79N-R3E; thence northwesterly through said Section 25 to the south corporation line of the City of Eldridge connecting with an unnamed street.

Eldridge:

Beginning at the south corporation line connecting with an unnamed street; thence in a general northeasterly direction to the north corporation line connecting with an unnamed street.

Beginning again on the north corporation line of the City of Eldridge connecting with an unnamed street; thence in a general northerly direction through Section 12-T79N-R3E; Section 7 and 6-T79N-R4E;

Section 31, 30, 19, 18, 7, and 6-T80N-R4E; and Section 31-T81N-R4E to the Scott-Clinton County Line (Wapsipinicon River) at a point approximately 900 feet south and 900 feet east of the center of Section 31-T81N-R4E.