

OFFICIAL DESCRIPTION CHANGE

OFFICE: Transportation Data

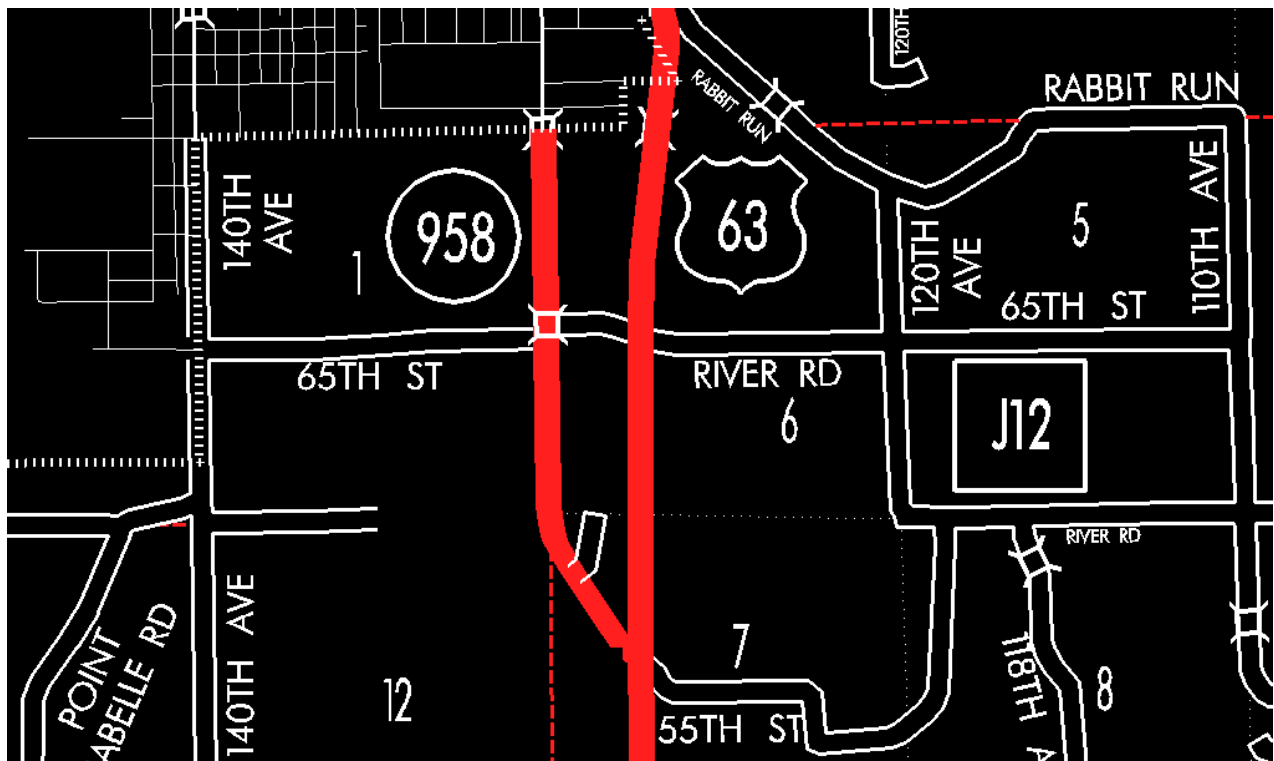
EFFECTIVE DATE: 07-01-2003

ENTERED BY: Stefani Wonders

ENTERED DATE: 08-22-2006

DISCUSSION/BACKGROUND:

Senate File 451 transferred Unsigned Iowa 958 in its entirety, in Wapello County, to county jurisdiction on July 1, 2003.



OFFICIAL DESCRIPTION CHANGE

COUNTY: Wapello

ROUTE: Unsigned Iowa 958

STAFF ACTION NUMBER: S-87-1505

APPROVAL DATE: 5-13-87

New Description – Unsigned Iowa 958 in Wapello County described as follows:

Beginning in approximately the S $\frac{1}{4}$ Corner of the NW $\frac{1}{4}$ Section 7-T71N-R13W (junction of US 63); thence northwesterly to the NW Corner Section 7-T71N-R13W; thence north along the section line of Section 6-T71N-R13W to the south corporation line of Ottumwa, connecting with Madison Avenue.

COMMISSION ORDER

DIVISION: Planning & Research

COMMISSION ORDER NUMBER: PR-79-272

SUBMITTED BY: C.I. MacGillivray

MEETING DATE: 11-2-78

DISCUSSION/BACKGROUND:

Unsigned Iowa 958 in Wapello County, Iowa should be officially included in the State Primary System.

PROPOSAL/ACTION RECOMMENDATION:

Beginning in approximately the S $\frac{1}{4}$ Corner of the NW $\frac{1}{4}$ Section 7-T71N-R13W (junction of US 63); thence northwesterly to the NW Corner Section 7-T71N-R13W; thence northerly along the section line of Section 6-T71N-R13W to the south corporation line of the City of Ottumwa.

NOW, THEREFORE: Be it resolved that the Iowa Department of Transportation approve the location of Unsigned Iowa 958 in Wapello County, Iowa.

Note: To become effective upon adoption of this resolution.

REVISED: 5-13-87

COMMISSION ORDER

DIVISION: Planning & Research

SUBMITTED BY: Raymond L. Kassel

MEETING DATE: 3-9-76

DISCUSSION/BACKGROUND:

Unsigned Iowa 958 in Wapello County, Iowa should be officially included in the State Primary System.

PROPOSAL/ACTION RECOMMENDATION:

Beginning in approximately the S $\frac{1}{4}$ Corner of the NW $\frac{1}{4}$ Section 7-T71N-R13W (junction of US 63); thence northwesterly to the NW Corner Section T71N-R13W; thence northerly along the section line of Section 6-T71N-R13W to the south corporation line of the City of Ottumwa.

NOW, THEREFORE: Be it resolved that the Iowa Department of Transportation approve the location of Unsigned Iowa 958 in Wapello County, Iowa.

Note: To become effective upon adoption of this resolution.