

## OFFICIAL DESCRIPTION CHANGE

OFFICE: Transportation Data

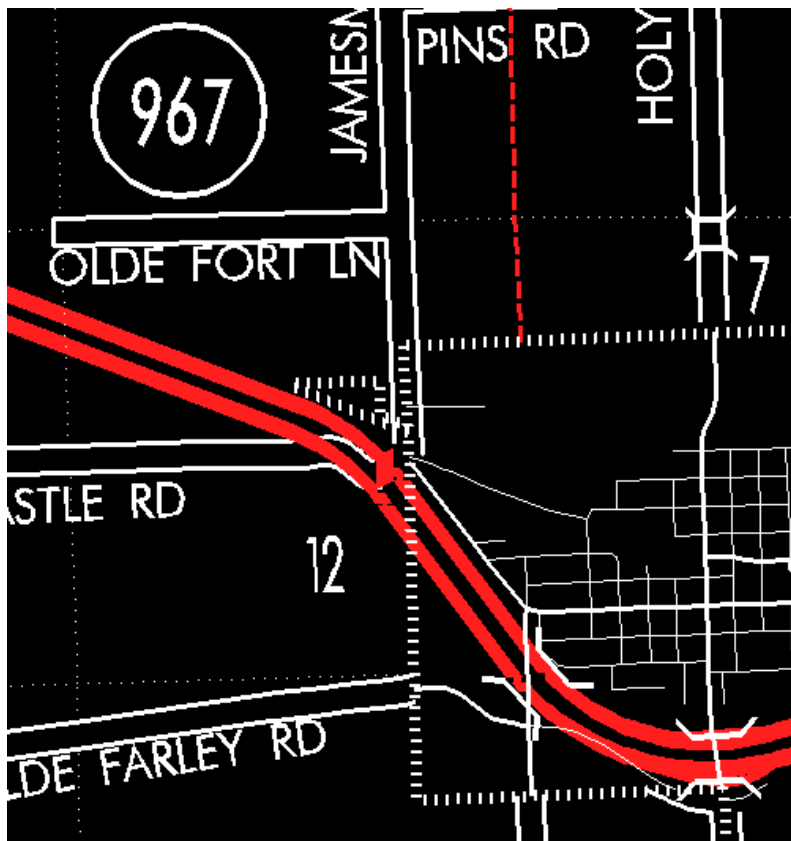
EFFECTIVE DATE: 07-01-2003

ENTERED BY: Stefani Wonders

ENTERED DATE: 08-28-2006

## DISCUSSION/BACKGROUND:

Senate File 451 transferred Unsigned Iowa 967 in its entirety, in Dubuque County, to county jurisdiction on July 1, 2003.



## COMMISSION ORDER

DIVISION: Planning & Research

COMMISSION ORDER NUMBER: PR-79-272

**SUBMITTED BY:** C.I. MacGillivray  
**MEETING DATE:** 11-2-78

**DISCUSSION/BACKGROUND:**

Unsigned Iowa 967 begins at US 20 approximately 200 feet west of the west corporation line of Farley, and northeasterly and southeasterly to said corporation line.

Due to a review of our Primary Road System Records Unsigned Iowa 967 in Dubuque County should be deleted and the new description added should be officially included into the Primary System.

**PROPOSAL/ACTION RECOMMENDATION:**

It is recommended that the old description of Unsigned Iowa 967 in Dubuque County be deleted and the new description, as referred in the attached detailed description, be included in the Primary Road System effective upon the adoption of this resolution.

Locate Unsigned Iowa 967 in Dubuque County as follows:

Beginning on US 20 at a point approximately 1000 feet east of the center of Section 12-T88N-R2W; thence in a northeasterly and southeasterly direction through Section 12-T88N-R2W to the west corporation line of the City of Farley, connecting with an unnamed street.

**OFFICIAL DESCRIPTION CHANGE**

**COUNTY:** Dubuque

**ROUTE:** Unsigned Iowa 967

**APPROVAL DATE:** 3-9-76

Beginning on US 20 at a point approximately 1 000 feet east of the center of Section 12-T88N-R2W; thence in a southeasterly direction to the west corporation line of the City of Farley, connecting with an unnamed street.

**COMMISSION ORDER**

**DIVISION:** Planning & Research

**SUBMITTED BY:** Raymond L. Kassel

**DISCUSSION/BACKGROUND:**

Unsigned Iowa 967 in Dubuque County, Iowa should be officially included in the State Primary System.

**PROPOSAL/ACTION RECOMMENDATION:**

Locate Unsigned Iowa 967 in Dubuque County as follows:

Beginning on US 20 at a point approximately 1000 feet east of the center of Section 12-T88N-R2W; thence in a southeasterly direction to the west corporation line of the City of Farley, connecting with an unnamed street.

NOW, THEREFORE: Be it resolved that the Iowa Department of Transportation approve the location of Unsigned Iowa 967 in Dubuque County, Iowa.

NOTE: To become effective upon adoption of this resolution.