

OFFICIAL DESCRIPTION CHANGE

OFFICE: Transportation Data

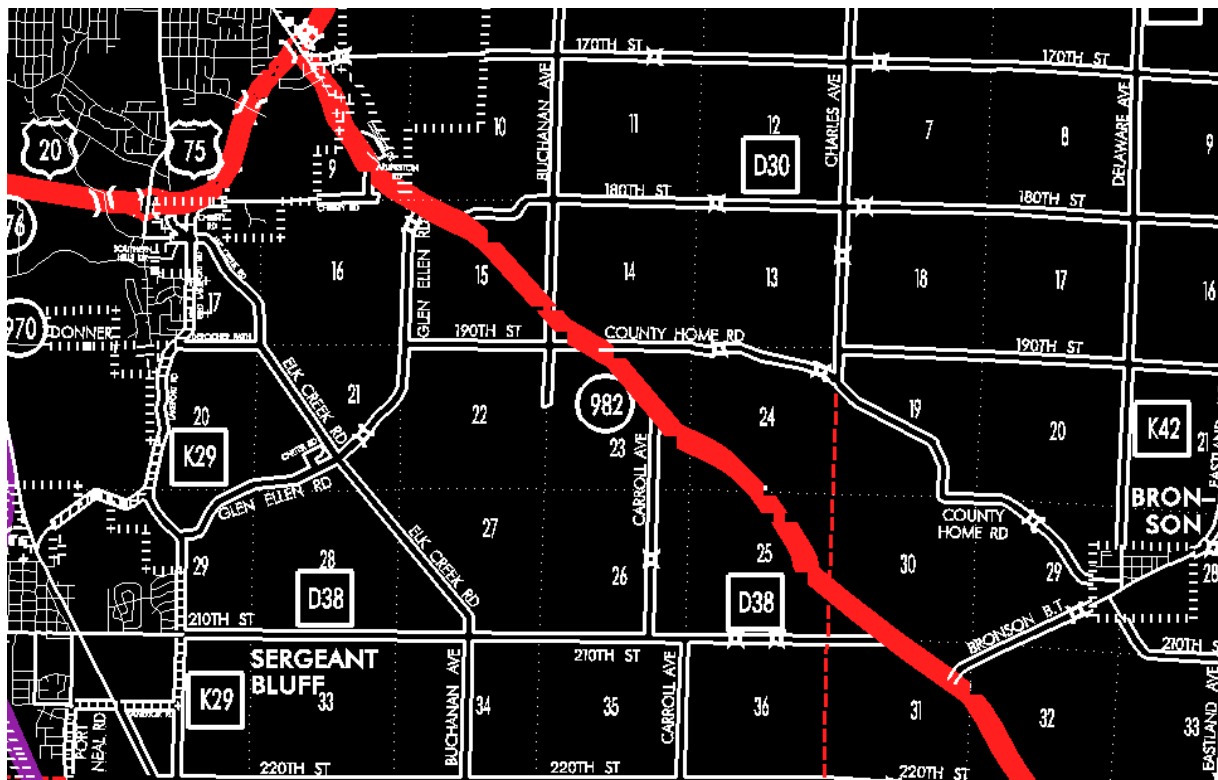
EFFECTIVE DATE: 07-01-2003

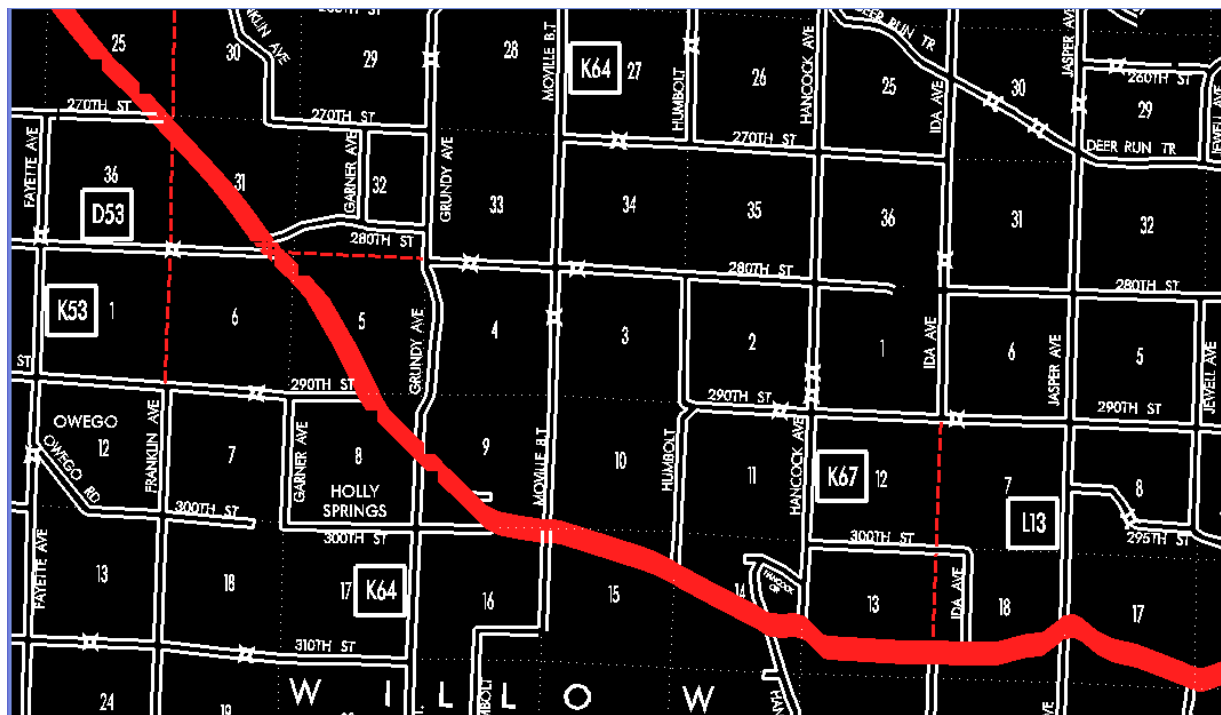
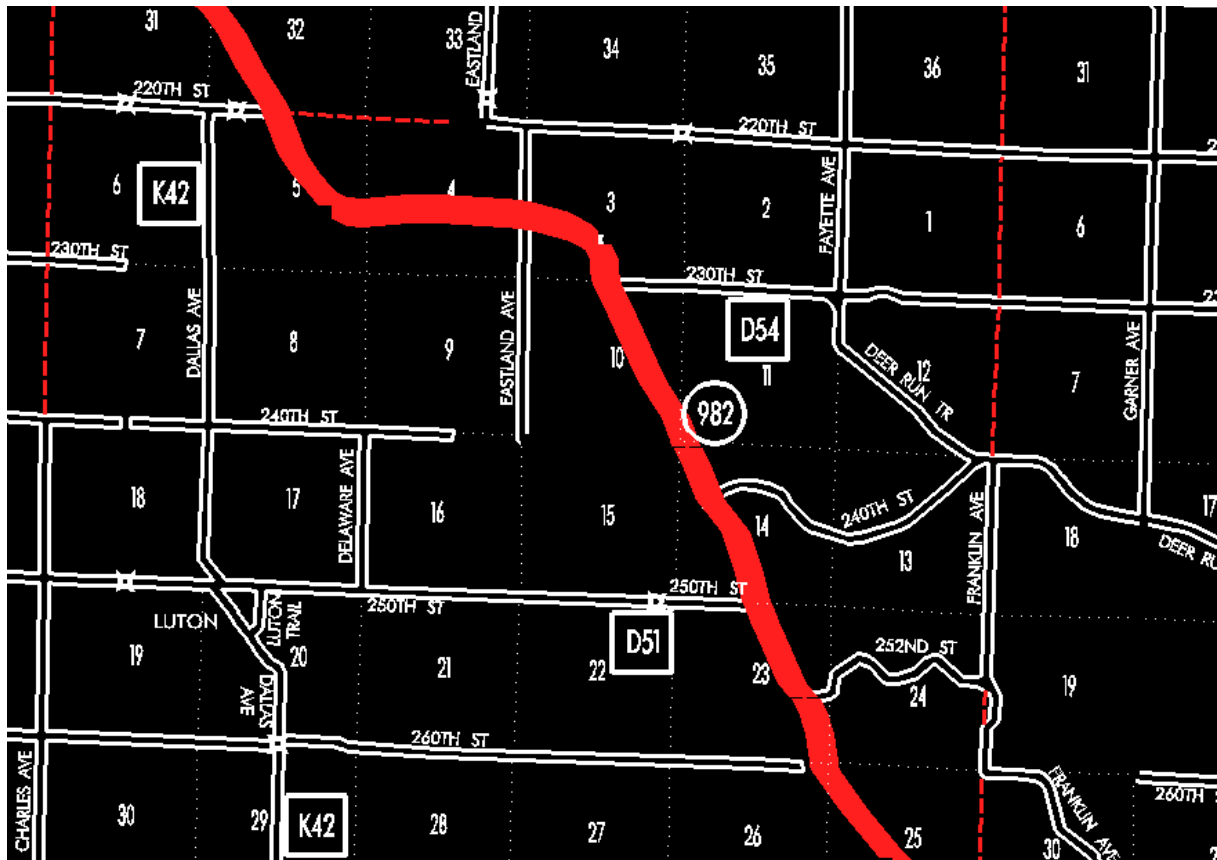
ENTERED BY: Stefani Wonders

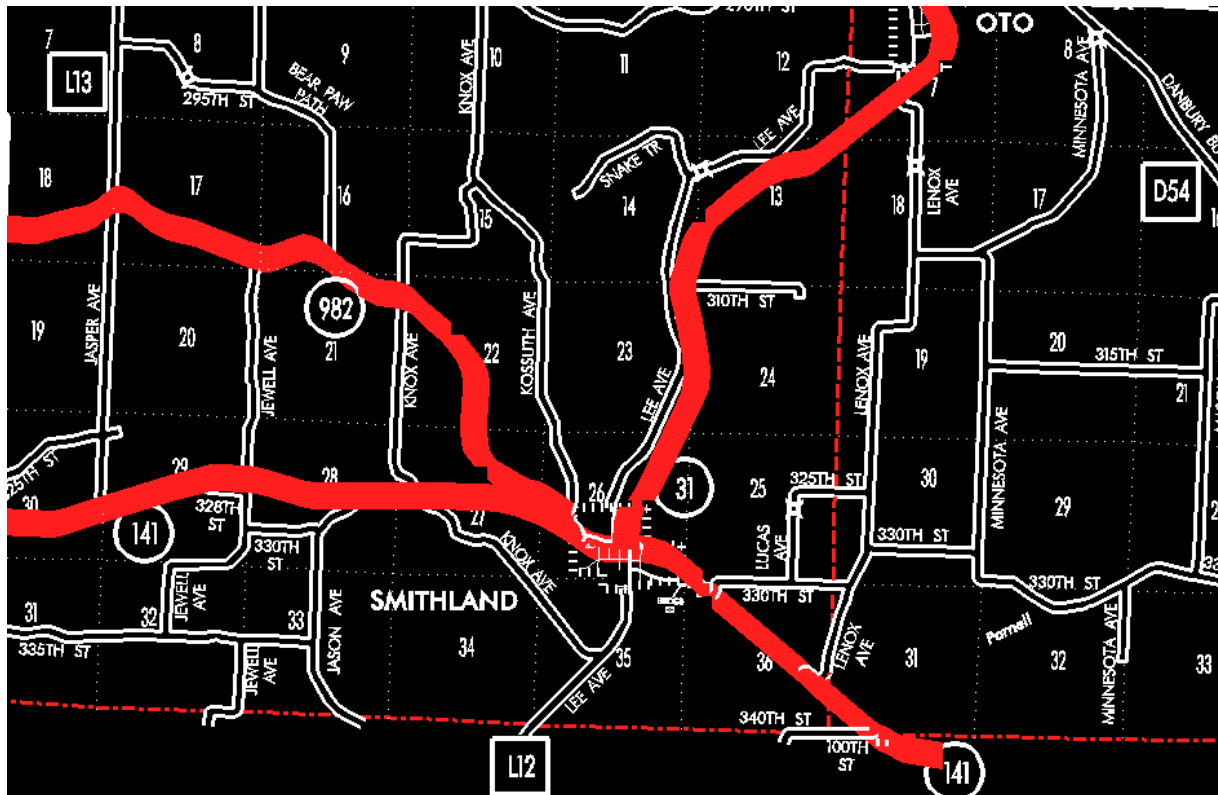
ENTERED DATE: 08-28-2006

DISCUSSION/BACKGROUND:

Senate File 451 transferred Unsigned Iowa 982 in its entirety, in Woodbury County, to county jurisdiction on July 1, 2003.







OFFICIAL DESCRIPTION CHANGE

COUNTY: Woodbury

ROUTE: Unsigned Iowa 982

STAFF ACTION NUMBER: S-87-1498

APPROVAL DATE: 5-13-87

New Description – Unsigned Iowa 982 in Woodbury County described as follows:

Beginning on the south corporation line of Sioux City, connecting with Morningside Street; then in a southeasterly direction through Sections 9, 10, 15, 14, 23, 24 and 25–T88N–R47W, Sections 30, 31 and 32–T88N–R46W; then in a southeasterly, easterly and southeasterly direction through Sections 5, 4, 3, 10, 11, 14, 23, 26, 25 and 36–T87N–R46W and Section 31–T87N–R45W; then in a southeasterly and easterly direction through Sections 6, 5, 8, 9, 15, 14 and

13-T86N-R45W; then in a northeasterly and southeasterly direction through Sections 18, 17, 16, 21, 22, 27 and 26-T86N-R44W to the west corporation line of Smithland, connecting with an unnamed street.

COMMISSION ORDER

DIVISION: Planning & Research

COMMISSION ORDER NUMBER: PR-80-378

SUBMITTED BY: Leland D. Smithson

MEETING DATE: 1-8-80

DISCUSSION/BACKGROUND:

Unsigned Iowa 982 begins at the south corporation line of the City of Sioux City and travels southeasterly to the west corporation line of the City of Smithland.

A review of the base map of Sioux City indicates the present description of unsigned Iowa 982 in Woodbury County should be deleted and the new description added. The new description would reflect an annexation in the Morningside Avenue and US 20 interchange area.

PROPOSAL/ACTION RECOMMENDATION:

It is recommended that the old description of unsigned Iowa 982 in Woodbury County be deleted and the new description, as referred to in the attached detailed description, be included in the primary road system.

Locate on the Primary Road System Unsigned Iowa 982 in Woodbury County as follows:

Beginning on the south corporation line of the City of Sioux City, connecting with an unnamed Street; thence in a southeasterly direction through Sections 9, 10, 15, 14, 23, 24, and 25-T88N-R47W, Sections 30, 31, and 32-T88N-R46W;

thence in a southeasterly, easterly, and southeasterly direction through Sections 5, 4, 3, 10, 11, 14, 23, 26, 25, and 36-T87N-R46W and Section 31-T87N-R45W; thence in a southeasterly and easterly direction through Sections 6, 5, 8, 9, 15, 14, and 13-T86N-R45W; thence in a northeasterly and southeasterly direction through Sections 18, 17, 16, 21, 22, 27, and 26-T86N-R44W to the west corporation line of the City of Smithland, connecting with an unnamed street.

REVISED: 5-13-87

COMMISSION ORDER

DIVISION: Planning & Research

COMMISSION ORDER NUMBER: PR-79-272

SUBMITTED BY: C.I. MacGillivray

MEETING DATE: 11-2-78

DISCUSSION/BACKGROUND:

Unsigned Iowa 982 begins on the east corporation line of Sioux City, and travels generally southeasterly to the west corporation line of Smithland, Iowa.

Due to a review of our Primary Road System Records Unsigned Iowa 982 in Woodbury County should be deleted and the new description added should be officially included into the Primary System.

PROPOSAL/ACTION RECOMMENDATION:

It is recommended that the old description of Unsigned Iowa 982 in Woodbury County be deleted and the new description, as referred in the attached detailed description, be included in the Primary Road System effective upon the adoption of this resolution.

Locate Unsigned Iowa 982 in Woodbury County as follows:

Beginning on the east corporation line of the City of Sioux City, connecting with an unnamed street; thence in a southeasterly direction through Sections 9, 10, 15, 14, 23, 24, and 25-T88N-R47W, Sections 30, 31, and 32-T88N-R46W; thence in a southeasterly, easterly, and southeasterly direction through Sections 5, 4, 3, 10, 11, 14, 23, 26, 25, and 36-T87N-R46W and Section

31-T87N-R45W; thence in a southeasterly and easterly direction through Sections 6, 5, 8, 9, 15, 14, and 13-T86N-R45W; thence in a northeasterly and southeasterly direction through Sections 18, 17, 16, 21, 22, 27, and 26-T86N-R44W to the west corporation line of the City of Smithland, connecting with an unnamed street.

REVISED: 1-8-80

COMMISSION RESOLUTION

COMMISSION ORDER NUMBER: 69-1719

SUBMITTED BY: Raymond L. Kassel

MEETING DATE: 12-17-69

Remove Unsigned Iowa 982 in Sioux City, Woodbury County, Iowa, as follows:

Beginning at a point on Smithland Road at Station 23+08.4 (the old east corporation line of Sioux City); thence in a southeasterly direction on Smithland Road to Station 15+72 (the new east corporation line of Sioux City).

NOW THEREFORE: Be it resolved that the Iowa State Highway Commission approve the revision of Unsigned Iowa 982 in Woodbury County, Iowa.

NOTE: To become effective upon adoption of this resolution and revert to the City Street System in accord with urban policy 2600-001-E7.

OFFICIAL DESCRIPTION CHANGE

COUNTY: Woodbury

ROUTE: Unsigned Iowa 982

APPROVAL DATE: 12-17-69

Beginning on the east corporation line of the City of Sioux City, connecting with Smithland Road; thence in a southeasterly direction through Sections 4, 9, 15, 14, 23, 24 and 25-T88N-R47W, Sections 30, 31 and 32-T88N-R46W; thence in a southeasterly, easterly and southeasterly direction through Sections 5, 4, 3, 10, 11, 14, 23, 24, 25 and 36-T87N-R46W Section 31-T87N-R45W; thence southeasterly and easterly direction through Sections 6, 5, 8, 9, 15, 14 and 13-T86N-R45W; thence in an easterly and southeasterly direction through Sections 18, 17, 16, 21, 22, 27, and 26-T86N-R44W to the west corporation line of the Town of Smithland, connecting with an unnamed street.

Differs from other description of 12-17-69, but assume this is the correct one.

REVISED 77

OFFICIAL DESCRIPTION CHANGE

COUNTY: Woodbury

ROUTE: Unsigned Iowa 982

APPROVAL DATE: 12-17-69

Beginning on the east corporation line of the City of Sioux City, connecting with Smithland Road; thence in a southeasterly direction through Sections 4, 9, 15, 14, 23, 24, and 25-T88N-R47W, Sections 30, 31, and 32-T88N-R46W; thence in a southeasterly, easterly, and southeasterly direction through Sections 5, 4, 3, 10, 11, 14, 23, 24, 25, and 36-T87N-R46W; thence in a southeasterly and easterly direction through Sections 6, 5, 8, 9, 15, 14, and 13-T86N-R45W; thence in an easterly and southeasterly direction through Sections 18, 17, 16, 21, 22, 27, and 26-T86N-R44W to the west corporation line of the Town of Smithland, connecting with an unnamed street.

Probably not as correct as other description of 12-17-69

REVISED: 1977

OFFICIAL DESCRIPTION CHANGE

COUNTY: Woodbury

ROUTE: Unsigned Iowa 982

APPROVAL DATE: 5-24-61

Beginning on the east corporation of the City of Sioux City, connecting with Smithland Road; thence in a southeasterly direction through Section 4, 9, 15, 14, 23, 24 and 25-T88N-R47W, Section 30, 31 and 32-T88N-R46W; in a southeasterly, easterly and southeasterly direction through Section 5, 4, 3, 10, 11, 14, 23, 24, 25 and 36-T87N-R46W; in a southeasterly direction through Section 31-T87N-R45W; in a southeasterly and easterly direction through Section 6, 5, 8, 9, 15, 14 and 13-T86N-R45W; and in an easterly and southeasterly direction through Section 18, 17, 16, 21, 22, 27 and 26-T86N-R44W to the west corporation line of the Town of Smithland, connecting with an unnamed street at a point approximately $\frac{1}{4}$ mile west and 500 feet south of the Center of Section 26-T86N-R44W.

NOTE: This section will revert to the Secondary System not to exceed one year from the date the County has been notified of the adoption of this resolution, providing such action meets with the requirements of the Code of Iowa.

REVISED: 12-17-69