

OFFICIAL DESCRIPTION CHANGE

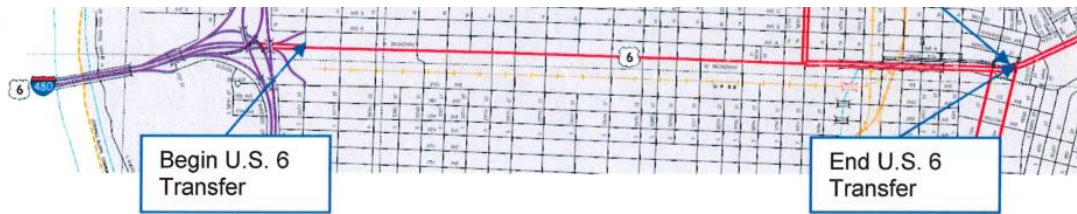
OFFICE: Research and Analytics

EFFECTIVE DATE: 5-13-16

ENTERED BY: Paul Mauer

ENTERED DATE: 9-27-19

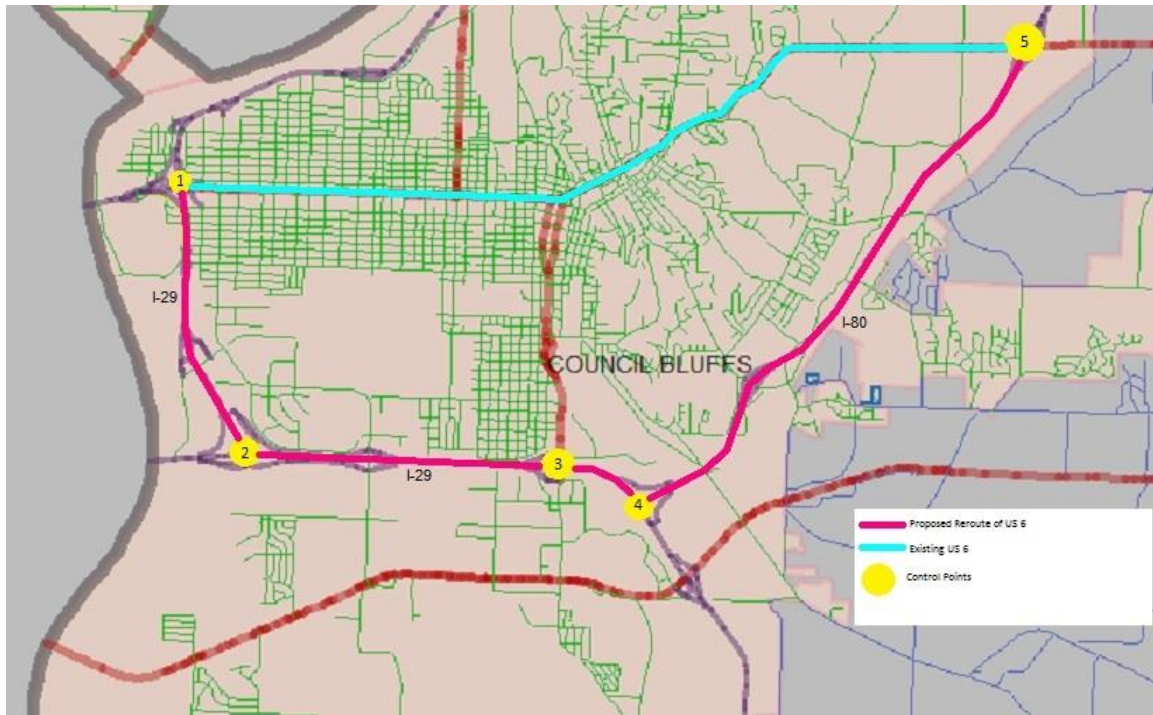
DISCUSSION/BACKGROUND:



Transfer of jurisdiction agreement number 2016-TJ-002, between the City of Council Bluffs and the Iowa Department of Transportation, transferred the following described section of road to the City of Council Bluffs on May 13, 2016.

Council Bluffs:

Beginning at the intersection of West Broadway and North Thirty-sixth Street, thence easterly on West Broadway to the intersection of North Sixth Street and Kanesville Boulevard.



PROPOSAL/ACTION RECOMMENDATION:

New Description – US 6 in Pottawattamie County described as follows:

Council Bluffs:

Beginning on the Interstate 480 bridge over the Missouri River at the Iowa–Nebraska State line (west corporation line of Council Bluffs) on an unnamed street (Interstate 480); thence south and southeasterly on Interstate 29; thence easterly on Interstate 80; thence northeasterly on Interstate 80 to Kanessville Boulevard; thence easterly on Kanessville Boulevard to the east corporation line.

OFFICIAL DESCRIPTION CHANGE

COUNTY: Pottawattamie

ROUTE: US 6

STAFF ACTION NUMBER: S-87-1517

APPROVAL DATE: 5-13-87

New Description – US 6 and its extensions in Pottawattamie County described as follows:

Council Bluffs:

Beginning on the Interstate 480 bridge over the Missouri River at the Iowa–Nebraska State line (west corporation line of Council Bluffs) on an unnamed street (Interstate 480); thence easterly on unnamed street (Interstate 480) to West Broadway; thence easterly on West Broadway to Kanesville Boulevard; thence northeasterly and easterly on Kanesville Boulevard to the east corporation line.

Beginning again on the east corporation line of Council Bluffs connecting with Kanesville Boulevard; thence easterly through Sections 22, 23 and 24–T75N–R43W; thence northeasterly through Sections 19, 20 and 21–T75N–R42W to a point approximately 700 feet east of the NW Corner Section 21–T75N–R42W; thence easterly following substantially the section line of Sections 21, 22, 23 and 24–T75N–R42W; Sections 19, 20, 21, 22, 23 and 24–T75N–R41W and Sections 19, 20, 21, 22 and 23–T75N–R40W to a point approximately 900 feet west of the SE Corner Section 14–T75N–R40W; thence curving in a northeasterly direction through said Section 14 to a point (south junction US 59) approximately 900 feet north of the SE Corner Section 14–T75N–R40W; thence northerly following substantially the section line of Section 13–T75N–R40W to a point approximately 500 feet north of the W $\frac{1}{4}$ Corner Section 13–T75N–R40W; thence in a northeasterly direction through Section 13–T75N–R40W to the south corporation line of Oakland, connecting with Highway Street.

Oakland:

Beginning again on the south corporation line and connecting with Highway Street; thence northeasterly on Highway Street to the east corporation line.

Beginning again on the east corporation line of Oakland connecting with Highway Street; thence easterly following substantially the section line of Sections 7 (north junction US 59) 8, 9, 10, 11 and 12-T75N-R39W and Sections 7, 8, 9, 10, 11 and 12-T75N-R38W to the Pottawattamie-Cass County line at a point near the SE Corner Section 1-T75N-R38W, Pottawattamie County (SW Corner Section 6-T75N-R37W, Cass County).

STAFF ACTION

OFFICE: Transportation Inventory

STAFF ACTION NUMBER: S-85-614

SUBMITTED BY: Patrick R. Cain

SUBMITTAL DATE: 12-5-84

TITLE: Official Description Change: US 6, Pottawattamie County

DISCUSSION/BACKGROUND:

US 6 has been relocated in the City of Council Bluffs from Broadway to Washington Avenue (8th Street northeasterly to Kimball Avenue). The Iowa Department of Transportation agreement number 80-16-074, between the Iowa Department of Transportation and the City of Council Bluffs, transfers old US 6 (Broadway Avenue) from 8th Street northeasterly to Kimball Avenue to city jurisdiction. To reflect this relocation and to provide a more detailed description of the extension of US 6 in Council Bluffs and Oakland, the description of US 6 in Pottawattamie County should be revised and the new description officially included in the Primary Road System.

US 6 begins on the Iowa-Nebraska State line at the west corporation line of Council Bluffs, and travels generally easterly and northeasterly via Council Bluffs and Oakland to the Pottawattamie-Cass County line approximately 11 miles north of the SE Corner of Pottawattamie County, Iowa.

PROPOSAL/ACTION RECOMMENDATION:

It is recommended to approve revising the description of US 6 in Pottawattamie County and including the new description in the Primary Road System.

New Description – US 6 and its extensions in Pottawattamie County
described as follows:

Council Bluffs:

Beginning on the Interstate 480 Bridge over the Missouri River at the Iowa–Nebraska State Line (west corporation line of Council Bluffs) on an unnamed street (Interstate 480); thence easterly on unnamed street (Interstate 480) to West Broadway; thence easterly on West Broadway to Kanesville Boulevard; thence northeasterly and easterly on Kanesville Boulevard to the east corporation line.

Beginning again on the east corporation line of the City of Council Bluffs connecting with Kanesville Boulevard; thence in a general easterly direction through Sections 22, 23 and 24–T75N–R43W; thence generally northeasterly through Sections 19, 20 and 21–T75N–R42W to a point approximately 700 feet east of the NW Corner Section 21–T75N–R42W; thence easterly following substantially the section line of Sections 21, 22, 23 and 24–T75N–R42W; Sections 19, 20, 21, 22, 23 and 24–T75N–R41W and Sections 19, 20, 21, 22 and 23–T75N–R40W to a point approximately 900 feet west of the SE Corner Section 14–T75N–R40W; thence curving in a northeasterly direction through said Section 14 to a point (south junction US 59) approximately 900 feet north of the SE Corner Section 14–T75N–R40W; thence northerly following substantially the section line of Section 13–T75N–R40W to a point approximately 500 feet north of the W $\frac{1}{4}$ Corner Section 13–T75N–R40W; thence in a northeasterly direction through Section 13–T75N–R40W to the south corporation line of the City of Oakland connecting with Highway Street.

Oakland:

Beginning again on the south corporation line and connecting with Highway Street; thence northeasterly on Highway Street to the east corporation line.

Beginning again on the east corporation line of the City of Oakland connecting with Highway Street; thence easterly following substantially the section line of Sections 7 (north junction US 59) 8, 9, 10, 11 and 12–T75N–R39W and Sections 7, 8, 9, 10, 11 and 12–T75N–R38W to the

Pottawattamie–Cass County line at a point near the SE Corner Section 1–T75N–R38W, Pottawattamie County (SW Corner Section 6–T75N–R37W, Cass County).

REVISED: 5–13–87

COMMISSION ORDER

DIVISION: Planning & Research

COMMISSION ORDER NUMBER: PR–79–272

SUBMITTED BY: C.I. MacGillivray

MEETING DATE: 11–2–78

TITLE: US 6, Pottawattamie County, Iowa

DISCUSSION/BACKGROUND:

Due to a review of our Primary Road System records US 6 in Pottawattamie County should be deleted and the new description added should be officially included into the Primary System.

US 6 begins on the Iowa–Nebraska State line at the west corporation line of Council Bluffs, and travels generally easterly and northeasterly via Council Bluffs and Oakland to the Pottawattamie–Cass County line approximately 11 miles north of the SE Corner of Pottawattamie County, Iowa.

PROPOSAL/ACTION RECOMMENDATION:

Locate US 6 and its extensions in Pottawattamie County as follows:

Council Bluffs:

Commencing on the Interstate 480 Bridge over the Missouri River at the Iowa–Nebraska State line (west corporation line) and connecting with an unnamed street; thence easterly, northeasterly and easterly to the east corporation line connecting with an unnamed street.

Beginning on the east corporation line of the City of Council Bluffs connecting with an unnamed street; thence in a general easterly direction through Sections 22, 23 and 24–T75N–R43W; thence generally northeasterly through Sections 19, 20, and 21–T75N–R42W to a point approximately 700 feet east of the NW Corner Section 21–T75N–R42W; thence easterly following substantially the section line of Sections 21, 22, 23 and 24–T75N–R42W; Sections 19, 20, 21, 22, 23 and 24–T75N–R41W and Sections 19, 20, 21, 22 and 23–T75N–R40W to a point approximately 900 feet west of the SE Corner Section 14–T75N–R40W; thence curving in a northeasterly direction through said Section 14 to a point (south junction US 59) approximately 900 feet north of the SE Corner Section 14–T75N–R40W; thence northerly following substantially the section line of Section 13–T75N–R40W to a point approximately 500 feet north of the W $\frac{1}{4}$ Corner Section 13–T75N–R40W; thence in a northeasterly direction through Section 13–T75N–R40W to the south corporation line of the City of Oakland connecting with an unnamed street.

Oakland:

Beginning on the south corporation line connecting with an unnamed street; thence generally northeasterly to the east corporation line connecting with an unnamed street.

Beginning again on the east corporation line of the City of Oakland connecting with an unnamed street; thence easterly following substantially the section line of Sections 7 (north junction US 59), 8, 9, 10, 11 and 12–T75N–R39W and Sections 7, 8, 9, 10, 11 and 12–T75N–R38W to the Pottawattamie–Cass County line at a point near the SE Corner Section 1–T75N–R38W, Pottawattamie County (SW Corner Section 6–T75N–R37W, Cass County).

NOW, THEREFORE: Be it resolved that the Iowa Department of Transportation approve the location of US 6 in Pottawattamie County, Iowa.

NOTE: To become effective upon the adoption of this resolution.

REVISED: 12-5-84

COMMISSION RESOLUTION

DIVISION: Planning & Research

COMMISSION ORDER NUMBER: 69-1439

SUBMITTED BY: Raymond L. Kassel

APPROVAL DATE: 10-15-69

Council Bluffs:

Commencing on the Interstate 480 bridge over the Missouri River at the Iowa-Nebraska State line (west corporation line City of Council Bluffs); thence easterly to West Broadway Extension; thence easterly and southeasterly on West Broadway Extension to West Broadway; thence easterly and northeasterly on West Broadway to East Broadway; thence northeasterly on East Broadway to Field Street; thence northeasterly and easterly on an unnamed street to the east corporation line at a point within Section 22-T75N-R43W.

Beginning on the east corporation line of the City of Council Bluffs connecting with an unnamed street; thence easterly through Section 22, 23, and 24-T75N-R43W, and Section 19-T75N-R42W to near the E $\frac{1}{4}$ Corner Section 19-T75N-R42W; thence northeasterly through Section 20 and 21-T75N-R42W to a point approximately 700 feet east of the NW Corner Section 21-T75N-R42W; thence east following substantially the section line to a point approximately 900 feet west of the SE Corner Section 14-T75N-R40W; thence curving in a northeasterly direction to a

point approximately 900 feet north of the SE Corner Section 14-T75N-R40W; thence north to a point approximately 500 feet north of the E ¼ Corner Section 14-T75N-R40W; thence in a northeasterly direction through Section 13-T75N-R40W to the south corporation line of the Town of Oakland, connecting with an unnamed street.

Beginning again on the north corporation line of the Town of Oakland, connecting with an unnamed street; thence east following substantially the section line to the Pottawattamie-Cass County line at a point near the SE Corner Section 1-T75N-R38W, Pottawattamie County (SW Corner Section 6-T75N-R37W, Cass County).

REVISED: 6-14-74

COMMISSION RESOLUTION

DIVISION: Planning & Research

COMMISSION ORDER NUMBER: 68-1412

SUBMITTED BY: Raymond L. Kassel

MEETING DATE: 10-16-68

TITLE: Revising description of US 6, Pottawattamie County

Locate US 6 in Pottawattamie County as follows:

Commencing on the Interstate 480 bridge over the Missouri River at the Iowa-Nebraska State line (West corporation line City of Council Bluffs); thence easterly to West Broadway Extension; thence northeasterly and easterly on West Broadway Extension to West Broadway; thence easterly on West Broadway to East Broadway; thence northeasterly on East Broadway to Ridge Street; thence northeasterly on an unnamed street to the east corporation line.

Beginning on the east corporation line of the City of Council Bluffs connecting with an unnamed street; thence northeasterly to near the Center SW ¼ Section 20-T75N-R43W; thence easterly through Section 20, 21, 22, 23, and 24-T75N-R43W, and Section 19-T75N-R42W to near the E ¼ Corner Section 19-T75N-R42W; thence northeasterly through Section 20 and 21-T75N-R42W to a point approximately 700 feet east of the NW Corner Section 21-T75N-R42W;

Council Bluffs:

Beginning on East Broadway at Kimball Avenue; thence northeasterly on East Broadway to Ridge Street; thence northeasterly on an unnamed street to the east corporation line.

NOW THEREFORE: Be it resolved that the Iowa State Highway Commission approve the revision of the above Primary Road System.

NOTE: To become effective upon adoption of this resolution.

The old location of US 6 from the east corporation line of Council Bluffs easterly to its connection with relocated US 6 (station 1506 + 98.42), will revert to the Pottawattamie County Secondary Road System in accord with Section 313.2 Code of Iowa. The old Primary Road Extension of US 6, from East Broadway Street easterly to the east corporation line will revert to the City of Council Bluffs street system.

OFFICIAL DESCRIPTION CHANGE

COUNTY: Pottawattamie

ROUTE: US 6

APPROVAL DATE: 10-16-68

Beginning on the east corporation line of the City of Council Bluffs connecting with an unnamed street; thence northeasterly to near the

Center SW $\frac{1}{4}$ Section 20–T75N–R43W; thence easterly through Section 20, 21, 22, 23, and 24–T75N–R43W, and Section 19–T75N–R42W to near the E $\frac{1}{4}$ Corner Section 19–T75N–R42W; thence northeasterly through Section 20 and 21–T75N–R42W to a point approximately 700 feet east of the NW Corner Section 21–T75N–R42W; thence east following substantially the section line to a point approximately 900 feet west of the SE Corner Section 14–T75N–R40W; thence curving in a northeasterly direction to a point approximately 900 feet north of the SE Corner Section 14–T75N–R40W; thence north to a point approximately 500 feet north of the E $\frac{1}{4}$ Corner Section 14–T75N–R40W; thence in a northeasterly direction through Section 13–T75N–R40W to the south corporation line of the Town of Oakland, connecting with an unnamed street.

Beginning again on the north corporation line of the Town of Oakland, connecting with an unnamed street; thence east following substantially the section line to the Pottawattamie–Cass County line at a point near the SE Corner Section 1–T75N–R38W, Pottawattamie County, (SW Corner Section 6–T75N–R37W, Cass County).

OFFICIAL DESCRIPTION CHANGE

COUNTY: Pottawattamie

CITY OF: Council Bluffs

ROUTE: US 6

APPROVAL DATE: 10–16–68

Commencing on the Interstate 480 bridge over the Missouri River at the Iowa–Nebraska State line (West corporation line City of Council Bluffs); thence easterly to West Broadway Extension; thence northeasterly and easterly on West Broadway Extension to West Broadway; thence easterly on West Broadway to East Broadway; thence northeasterly on East Broadway to Ridge Street; thence northeasterly on an unnamed street to the east corporation line.

OFFICIAL DESCRIPTION CHANGE**COUNTY:** Pottawattamie**CITY OF:** Council Bluffs**ROUTE:** US 6**APPROVAL DATE:** 10-15-65

Commencing on the Interstate 480 bridge over the Missouri River at the Iowa-Nebraska State line (west corporation line of Council Bluffs); thence easterly to the West Broadway Extension; thence easterly and southeasterly on the West Broadway Extension to West Broadway; thence easterly and northeasterly on West Broadway to East Broadway; thence northeasterly on East Broadway to North Broadway; thence northeasterly and easterly on North Broadway to east corporation line.

REVISED: 6-14-74**OFFICIAL DESCRIPTION CHANGE****COUNTY:** Pottawattamie**CITY OF:** Oakland**ROUTE:** US 6**APPROVAL DATE:** 2-16-38

Commencing at the south corporation line; thence northeasterly on unnamed street on the east side of and substantially parallel to the Chicago, Rock Island, & Pacific Railroad to Linden Street; thence northeasterly to Kearney Street; thence continuing northeasterly on unnamed street to north corporation line.

REVISED: 6-14-74

OFFICIAL DESCRIPTION CHANGE

COUNTY: Pottawattamie

ROUTE: US 6

APPROVAL DATE: 4-14-37

to a point approximately 700 feet east of the NW Corner Section 21-T75N-R42W; thence east following substantially the section line to a point approximately 900 feet west of the SE Corner Section 14-T75N-R40W; thence curving in a northeasterly direction to a point approximately 900 feet north of the SE Corner Section 14-T75N-R40W; thence north to a point approximately 500 feet north of the E $\frac{1}{4}$ Corner Section 14-T75N-R40W; thence in a northeasterly direction through Section 13-T75N-R40W to the south corporation line of the Town of Oakland, connecting with an unnamed street.

Beginning again on the north corporation line of the of Oakland, connecting with an unnamed street; thence east following substantially the section line to the Pottawattamie-Cass County line at a point near the SE Corner Section 1-T75N-R38W, Pottawattamie County, (SW Corner Section 6-T75N-R37W, Cass County).