

OFFICIAL DESCRIPTION CHANGE

OFFICE: Research and Analytics

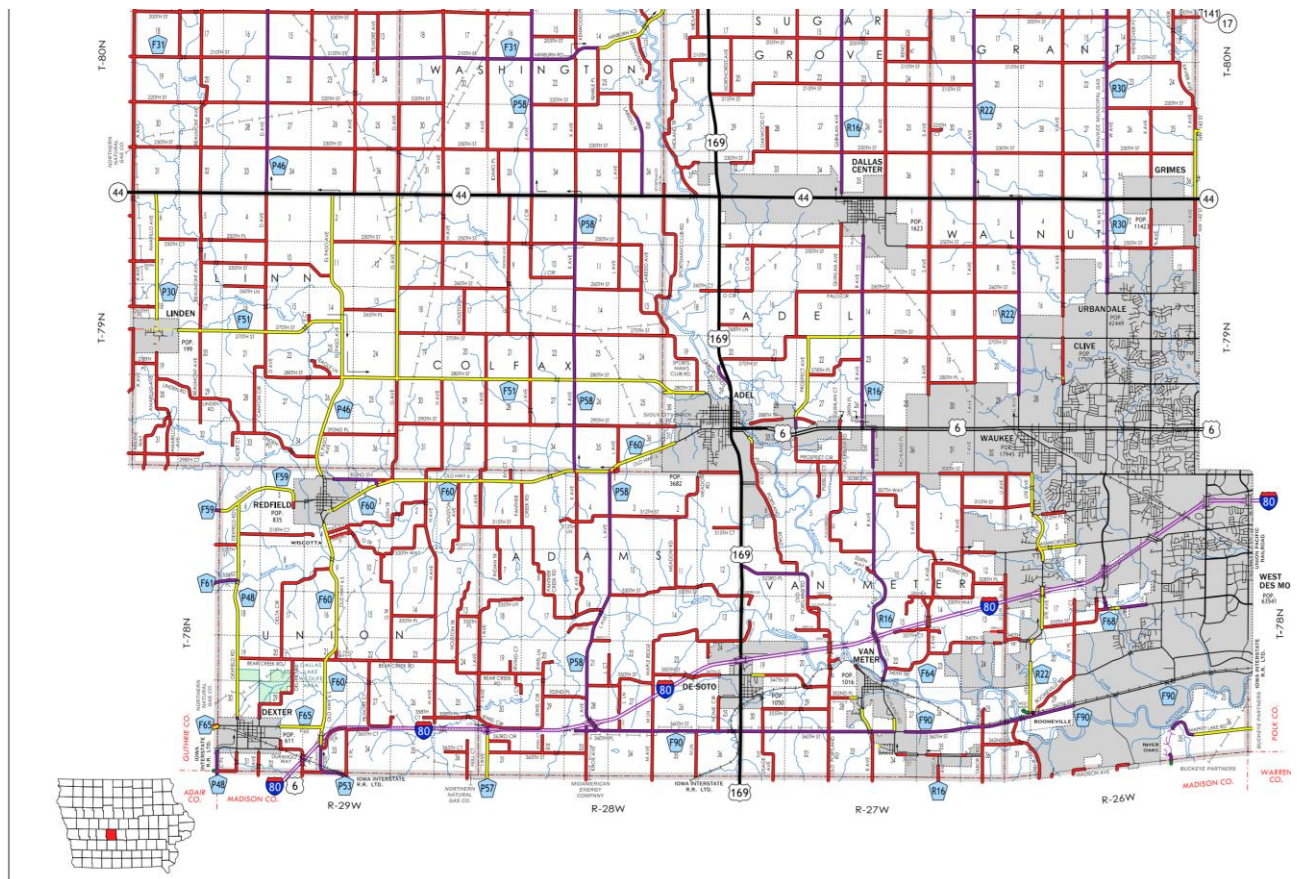
EFFECTIVE DATE: 08-23-2019

COUNTY: Dallas

ROUTE: US 6

ENTERED BY: Paul Mauer

ENTERED DATE: 08-14-2020



DISCUSSION/BACKGROUND:

Due to annexations by the Cities of Adel and Waukee effective April 4, 2018 ,August 16, 2017 and August 23, 2019. It is recommended that the primary route description for US 6 be revised.

New Description – US 6 and its extensions in Dallas County described as follows:

Beginning on the Dallas–Madison County line at a point approximately 1704 feet west of the SE Corner of Section 32–T78N–R29W, Dallas County (NE Corner of Section 5–T77N–R29W, Madison County); thence northeasterly through Sections 32 and 33–T73N–R29W to a point approximately 2612 feet east and 127 feet south of the N $\frac{1}{4}$ Corner of Section 33–T73N–R29W; thence easterly following substantially the section line of Sections 33, 34, 35, and 36–T78N–R29W and Sections 31 and 32–T78N–R28W to a point approximately 1094 feet west of the NE Corner of said Section 32; thence northeasterly through Sections 29, 28, 27, 26, 23, and 24–T78N–R28W to the west corporation line of De Soto connecting with an unnamed street (approximately 1869 feet east and 159 feet north of the Center of said Section 24).

De Soto:

Beginning west corporation line; thence easterly connecting with Guthrie Street at the junction of US 169; thence northerly on Guthrie Street to the north corporation line.

Beginning again on the north corporation line of De Soto connecting with Guthrie Street; thence north following substantially the section line of Sections 19, 18, 7, and 6–T78N–R27W to the south corporation line of Adel connecting with Nile Kinnick Drive South.

Adel:

Beginning at the south corporation line connecting with Nile Kinnick Drive South; thence northerly on Nile Kinnick Drive South to the north corporation line at the intersection of 302nd Place.

Beginning again at the north corporation line of Adel connecting with Nile Kinnick Drive South; thence northerly to the north corporation line of Adel

connecting with Nile Kinnick Drive South (approximately 70 feet west of the NW Corner of Section 6–T78N–R27W).

Adel:

Beginning at the south corporation line connecting with Nile Kinnick Drive South; thence northerly, northwesterly and northerly on Nile Kinnick Drive South connecting with Greene Street at the Junction of US 169; thence easterly on Greene Street to the east corporation line at the intersection of R Avenue (approximately 1.330 feet west of the NW Corner of Section 35–T79N–R35W).

Beginning again at the east corporation line of Adel at the intersection of R Avenue (approximately 1.330 feet west of the NW Corner of Section 35–T79N–R35W); thence easterly to the west corporation line of Waukee (approximately 1,025 feet west of the NW Corner of Section 35–T79N–R35W).

Waukee:

Beginning at the west corporation line (approximately 1,025 feet west of the NW Corner of Section 35–T79N–R35W); thence easterly connecting with Hickman Avenue to the east corporation line/west corporation line of Clive connecting with Hickman Road (approximately 2410 feet east of NW Corner Section 35–T79N–R26W).

Clive:

Beginning on Hickman Road at the west corporation line of Clive; thence east on Hickman Road to the east corporation line/southwest corporation line of Urbandale/Dallas–Polk County line (approximately NE Corner Section 36–T79N–R26W, Dallas County) (NW Corner Section 31–T79N–R25W, Polk County).

OFFICIAL DESCRIPTION CHANGE

OFFICE: Research and Analytics

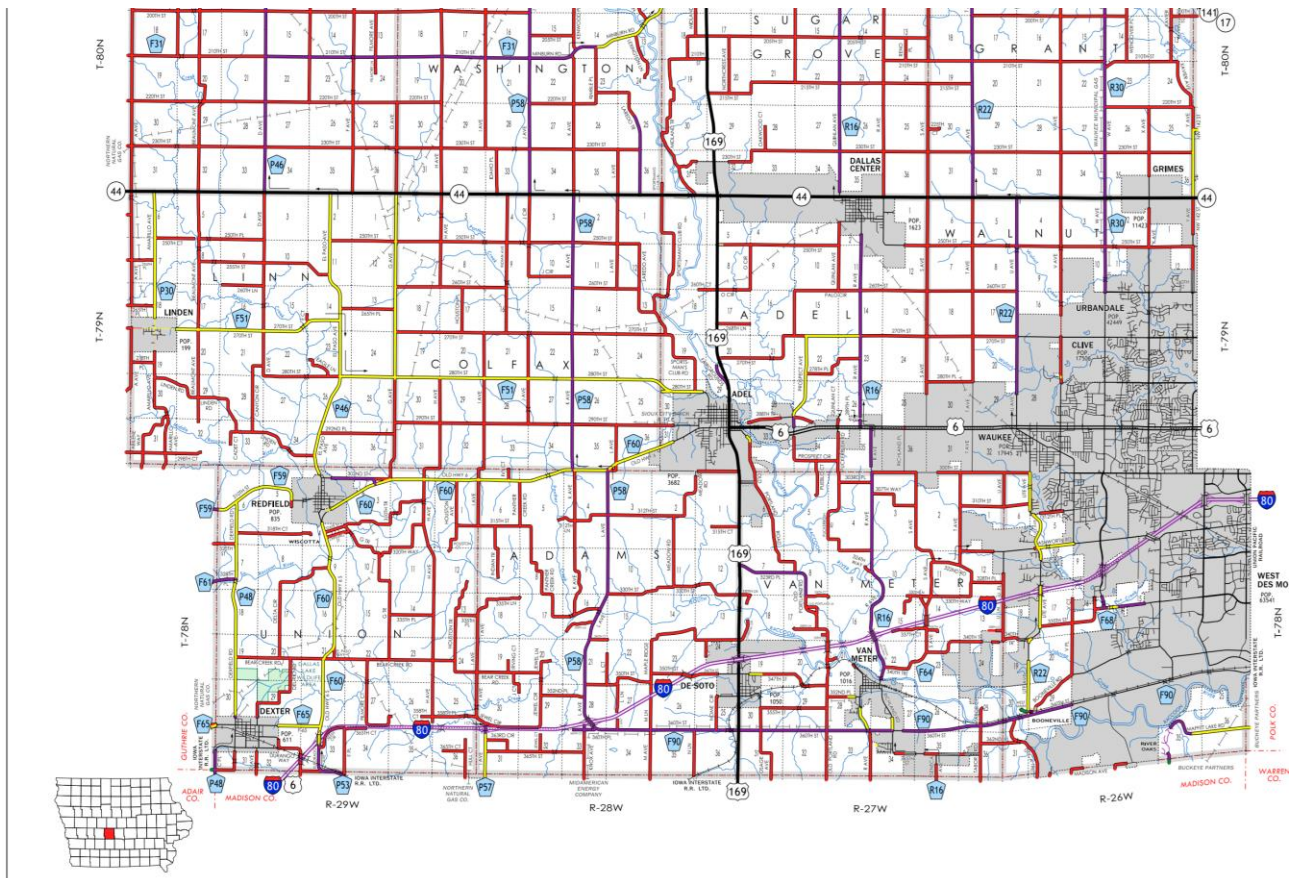
EFFECTIVE DATE: 08-23-2019

COUNTY: Dallas

ROUTE: US 6

ENTERED BY: Paul Mauer

ENTERED DATE: 08-14-2020



DISCUSSION/BACKGROUND:

Due to annexations by the Cities of Adel and Wauke effective April 4, 2018 ,August 16, 2017 and August 23, 2019. It is recommended that the primary route description for US 6 be revised.

New Description – US 6 and its extensions in Dallas County described as follows:

Beginning on the Dallas–Madison County line at a point approximately 1704 feet west of the SE Corner of Section 32–T78N–R29W, Dallas County (NE Corner of Section 5–T77N–R29W, Madison County); thence northeasterly through Sections 32 and 33–T73N–R29W to a point approximately 2612 feet east and 127 feet south of the N $\frac{1}{4}$ Corner of Section 33–T73N–R29W; thence easterly following substantially the section line of Sections 33, 34, 35, and 36–T78N–R29W and Sections 31 and 32–T78N–R28W to a point approximately 1094 feet west of the NE Corner of said Section 32; thence northeasterly through Sections 29, 28, 27, 26, 23, and 24–T78N–R28W to the west corporation line of De Soto connecting with an unnamed street (approximately 1869 feet east and 159 feet north of the Center of said Section 24).

De Soto:

Beginning west corporation line; thence easterly connecting with Guthrie Street at the junction of US 169; thence northerly on Guthrie Street to the north corporation line.

Beginning again on the north corporation line of De Soto connecting with Guthrie Street; thence north following substantially the section line of Sections 19, 18, 7, and 6–T78N–R27W to the south corporation line of Adel connecting with Nile Kinnick Drive South.

Adel:

Beginning at the south corporation line connecting with Nile Kinnick Drive South; thence northerly on Nile Kinnick Drive South to the north corporation line at the intersection of 302nd Place.

Beginning again at the north corporation line of Adel connecting with Nile Kinnick Drive South; thence northerly to the north corporation line of Adel

connecting with Nile Kinnick Drive South (approximately 70 feet west of the NW Corner of Section 6–T78N–R27W).

Adel:

Beginning at the south corporation line connecting with Nile Kinnick Drive South; thence northerly, northwesterly and northerly on Nile Kinnick Drive South connecting with Greene Street at the Junction of US 169; thence easterly on Greene Street to the east corporation line at the intersection of R Avenue (approximately 1.330 feet west of the NW Corner of Section 35–T79N–R35W).

Beginning again at the east corporation line of Adel at the intersection of R Avenue (approximately 1.330 feet west of the NW Corner of Section 35–T79N–R35W); thence easterly to the west corporation line of Waukee (approximately 1,025 feet west of the NW Corner of Section 35–T79N–R35W).

Waukee:

Beginning at the west corporation line (approximately 1,025 feet west of the NW Corner of Section 35–T79N–R35W); thence easterly connecting with Hickman Avenue to the east corporation line/west corporation line of Clive connecting with Hickman Road (approximately 2410 feet east of NW Corner Section 35–T79N–R26W).

Clive:

Beginning on Hickman Road at the west corporation line of Clive; thence east on Hickman Road to the east corporation line/southwest corporation line of Urbandale/Dallas–Polk County line (approximately NE Corner Section 36–T79N–R26W, Dallas County) (NW Corner Section 31–T79N–R25W, Polk County).

OFFICIAL DESCRIPTION CHANGE

OFFICE: Research and Analytics

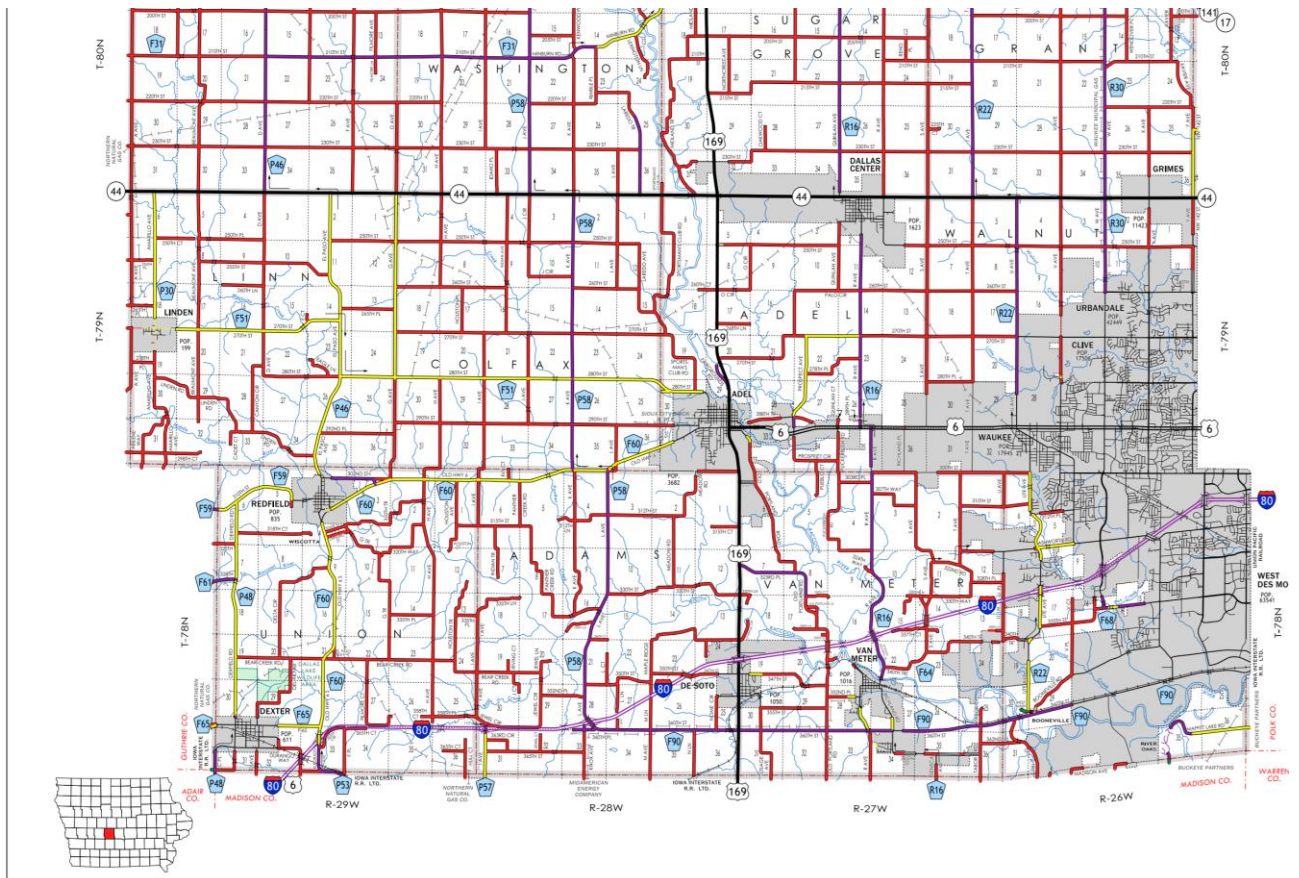
EFFECTIVE DATE: 4-23-2018

COUNTY: Dallas

ROUTE: US 6

ENTERED BY: Paul Mauer

ENTERED DATE: 10-29-2019



DISCUSSION/BACKGROUND:

Due to annexations by the Cities of Adel and Wauke effective April 4, 2018 and August 16, 2017. It is recommended that the primary route description for US 6 be revised.

New Description – US 6 and its extensions in Dallas County described as follows:

Beginning on the Dallas–Madison County line at a point approximately 1704 feet west of the SE Corner of Section 32–T78N–R29W, Dallas County (NE Corner of Section 5–T77N–R29W, Madison County); thence northeasterly through Sections 32 and 33–T73N–R29W to a point approximately 2612 feet east and 127 feet south of the N $\frac{1}{4}$ Corner of Section 33–T73N–R29W; thence easterly following substantially the section line of Sections 33, 34, 35, and 36–T78N–R29W and Sections 31 and 32–T78N–R28W to a point approximately 1094 feet west of the NE Corner of said Section 32; thence northeasterly through Sections 29, 28, 27, 26, 23, and 24–T78N–R28W to the west corporation line of De Soto connecting with an unnamed street (approximately 1869 feet east and 159 feet north of the Center of said Section 24).

De Soto:

Beginning west corporation line; thence easterly connecting with Guthrie Street at the junction of US 169; thence northerly on Guthrie Street to the north corporation line.

Beginning again on the north corporation line of De Soto connecting with Guthrie Street; thence north following substantially the section line of Sections 19, 18, 7, and 6–T78N–R27W to the south corporation line of Adel connecting with Nile Kinnick Drive South.

Adel:

Beginning at the south corporation line connecting with Nile Kinnick Drive South; thence northerly on Nile Kinnick Drive South to the north corporation line at the intersection of 302nd Place.

Beginning again at the north corporation line of Adel connecting with Nile Kinnick Drive South; thence northerly to the north corporation line of Adel

connecting with Nile Kinnick Drive South (approximately 70 feet west of the NW Corner of Section 6–T78N–R27W).

Adel:

Beginning at the south corporation line connecting with Nile Kinnick Drive South; thence northerly, northwesterly and northerly on Nile Kinnick Drive South connecting with Greene Street at the Junction of US 169; thence easterly on Greene Street to the east corporation line at the intersection of R Avenue (approximately 1.330 feet west of the NW Corner of Section 35–T79N–R35W).

Beginning again at the east corporation line of Adel at the intersection of R Avenue (approximately 1.330 feet west of the NW Corner of Section 35–T79N–R35W); thence easterly to the west corporation line of Waukee (approximately 1,025 feet west of the NW Corner of Section 35–T79N–R35W).

Waukee:

Beginning at the west corporation line (approximately 1,025 feet west of the NW Corner of Section 35–T79N–R35W); thence easterly connecting with Hickman Avenue to the east corporation line/west corporation line of Clive connecting with Hickman Road (approximately 2410 feet east of NW Corner Section 35–T79N–R26W).

Clive:

Beginning on Hickman Road at the west corporation line of Clive; thence east on Hickman Road to the east corporation line/southwest corporation line of Urbandale/Dallas–Polk County line (approximately NE Corner Section 36–T79N–R26W, Dallas County) (NW Corner Section 31–T79N–R25W, Polk County).

OFFICIAL DESCRIPTION CHANGE**OFFICE:** Transportation Data**EFFECTIVE DATE:** 07-01-2003**ENTERED BY:** Stefani Wonders**ENTERED DATE:** 08-23-2006**DISCUSSION/BACKGROUND:**

Senate File 451 transferred US 6 in Dallas County from the Dallas-Madison County line at a point approximately 1,285 feet west of the SE Corner of Section 32-T78N-R29W, Dallas County (NE Corner of Section 5-T77N-R29W, Madison County); thence northeast through Sections 32 and 33-T78N-R29W to a point approximately 233 feet east and 1,000 feet south of the N $\frac{1}{4}$ Corner of Section 33-T78N-R29W (junction Interstate 80); thence northerly through Sections 33, 28, and 21-T78N-R29W to a point approximately 400 feet south of the center of Section 21-T78N-R29W; thence in a northeasterly direction to a point approximately 600 feet south and $\frac{1}{4}$ mile west of the NE Corner of said Section 21; thence north, northwesterly, and northerly through Sections 21, 16, 9, and 4-T78N-R29W to the south corporation line of Redfield, connecting with an unnamed street; thence in a northeasterly direction on unnamed street to the east corporation line; thence northeasterly and easterly through Sections 4, 3, 2, and 1-T78N-R29W; thence easterly and northeasterly through the north part of Sections 6, 5, and 4-T78N-R26W and the south part of Sections 35 and 36-T79N-R28W and Section 31-T79N-R27W to the west corporation line of Adel connecting with Greene Street; thence northeast and east on Greene Street to the junction of US 169, to city and county jurisdiction on July 1, 2003.

PROPOSAL/ACTION RECOMMENDATION:

It is recommended to approve deleting the present description of US 6 in Dallas County from the primary road system and approve including the attached new description of US 6 in the primary road system.

Locate US 6 and its extensions in Dallas County as follows:

Adel:

Beginning at the junction of US 169 on Greene Street; thence east on Greene Street to the east corporation line.

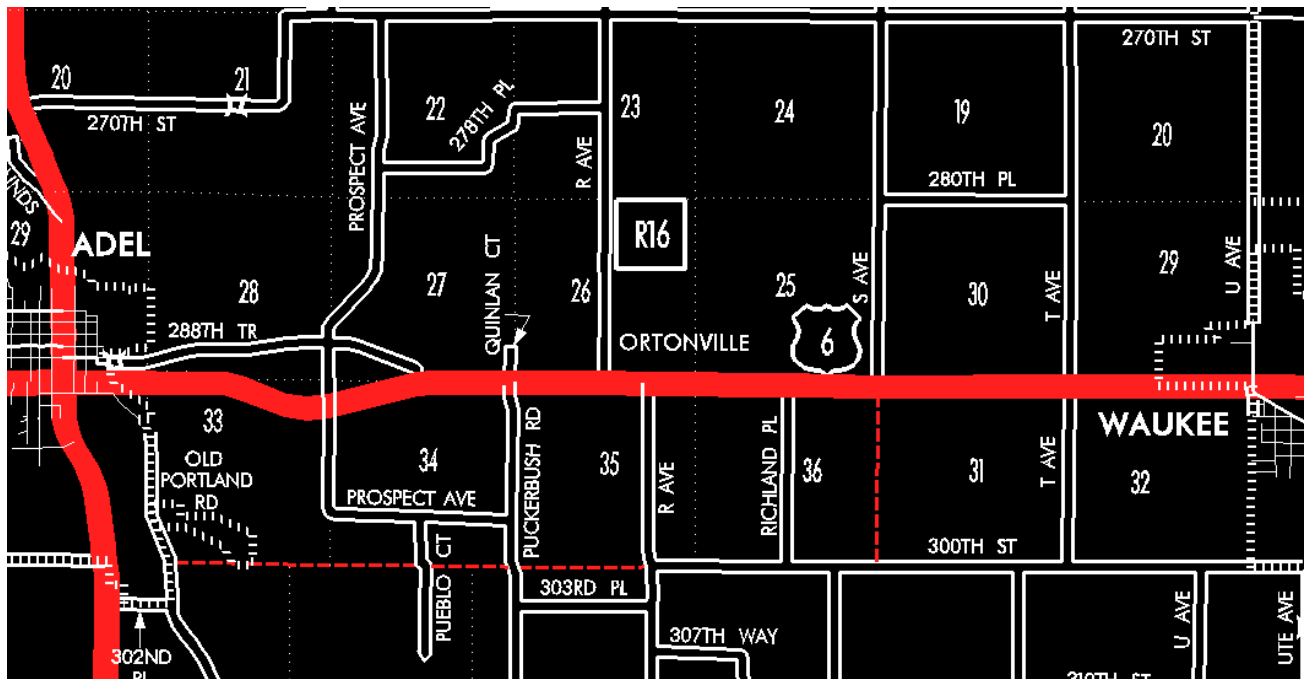
Beginning again on the east corporation line of Adel connecting with Greene Street (approximately 1345 feet west of the NW Corner Section 33-T79N-R27W); thence east, southeast, and northeast direction through Sections 32, 33, and 34-T79N-R27W to a point approximately 1,500 feet west of the NE Corner said Section 34; thence east following substantially the section line of Sections 34, 35 and 36-T79N-R27W; and Sections 31 and 32-T79N-R26W to the west corporation limits of Waukee connecting with Hickman Avenue (approximately N $\frac{1}{4}$ Corner of said Section 32..

Waukee:

Beginning on Hickman Avenue at the west corporation line; thence east on Hickman Avenue to the east corporation line/west corporation line of Clive (approximately 2410 feet east of NW Corner Section 35-T79N-R26W).

Clive:

Beginning on Hickman Avenue at the west corporation line of Clive; thence east on Hickman Avenue to the east corporation line/southwest corporation line of Urbandale/Dallas-Polk County line (approximately NE Corner Section 36-T79N-R26W, Dallas County) (NW Corner Section 31-T79N-R25W, Polk County).



OFFICIAL DESCRIPTION CHANGE

COUNTY: Dallas

ROUTE: US 6

STAFF ACTION NUMBER: S-87-708

APPROVAL DATE: 12-18-86

New Description – US 6 and its extensions in Dallas County described as follows:

Beginning on the Dallas–Madison County line at a point approximately 1,285 feet west of the SE Corner of Section 32–T78N–R29W, Dallas County (NE Corner of Section 5–T77N–R29W, Madison County); thence northeast through Sections 32 and 33–T78N–R29W to a point approximately 233 feet east and 1,000 feet south of the N $\frac{1}{4}$ Corner of Section 33–T78N–R29W (junction Interstate 80); thence northerly through Sections 33, 28, and 21–T78N–R29W to a point approximately 400 feet south of the center of Section 21–T78N–R29W; thence in a northeasterly direction to a point approximately 600 feet south and $\frac{1}{4}$ mile west of the NE Corner of said Section 21; thence north, northwesterly, and northerly through Sections 21, 16, 9, and 4–T78N–R29W to the south corporation line of Redfield, connecting with an unnamed street.

Redfield:

Beginning on an unnamed street at the south corporation line; thence in a northeasterly direction on unnamed street to the east corporation line.

Beginning again on the east corporation line of Redfield connecting with an unnamed street; thence northeasterly and easterly through Sections 4, 3, 2, and 1–T78N–R29W; thence easterly and northeasterly through the north part of Sections 6, 5, and 4–T78N–R26W and the south part of Sections 35 and 36–T79N–R28W and Section 31–T79N–R27W to the west corporation line of Adel connecting with Greene Street.

Adel:

Beginning on Greene Street at the west corporation line; thence northeast and east on Greene Street to the east corporation line.

Beginning again on the east corporation line of Adel connecting with Greene Street; thence east, southeast, and northeast direction through Sections 32, 33, and 34-T79N-R27W to a point approximately 1,500 feet west of the NE Corner said Section 34; thence east following substantially the section line of Sections 34, 35 and 36-T79N-R27W; and Sections 31 and 32-T79N-R26W to the west corporation limits of Waukee connecting with an unnamed street.

Waukee:

Beginning on an unnamed street at the west corporation line; thence east on unnamed street to the east corporation line.

Beginning again at the east corporation line of Waukee connecting with an unnamed street; thence east following substantially the section line of Sections 35 and 36-T79N-R26W to the Dallas-Polk County line at a point near the NE Corner Section 36-T79N-R26W, Dallas County (NW Corner Section 31-T79N-R25W, Polk County).

STAFF ACTION

OFFICE: Transportation Inventory

STAFF ACTION NUMBER: S-83-520

SUBMITTED BY: Patrick R. Cain

SUBMITTAL DATE: 12-15-82

DISCUSSION/BACKGROUND:

US 6 begins at the Dallas-Madison County line approximately one mile southeast of the City of Dexter and proceeds northeasterly via the cities of Redfield, Adel, and Waukee to the Dallas-Polk County line approximately two miles west of the City of Clive.

Due to an annexation to the north part of the City of Waukee, the present description of US 6 in Dallas County should be deleted and the new description added should be officially included in the primary road system to reflect this change in corporate limits. US 6 in Dallas County and in the Cities of Redfield and Adel remains unchanged.

PROPOSAL/ACTION RECOMMENDATION:

It is recommended to approve deleting the present description of US 6 in Dallas County from the primary road system and approve including the attached new description of US 6 in the primary road system.

Locate US 6 and its extensions in Dallas County as follows:

Beginning on the Dallas–Madison County line at a point approximately 1,285 feet west of the SE Corner of Section 32–T78N–R29W, Dallas County (NE Corner of Section 5–T77N–R29W, Madison County); thence northeasterly through Sections 32 and 33–T78N–R29W to a point approximately 233 feet east and 1,000 feet south of the N $\frac{1}{4}$ Corner of Section 33–T78N–R29W (junction Interstate 80); thence northerly through Sections 33, 28, and 21–T78N–R29W to a point approximately 400 feet south of the center of Section 21–T78N–R29W; thence in a northeasterly direction to a point approximately 800 feet south and $\frac{1}{4}$ mile west of the NE Corner of said Section 21; thence north, northwesterly, and northerly through Sections 21, 16, 9, and 4–T78N–R29W to the south corporation line of the City of Redfield, connecting with an unnamed street.

Redfield:

Beginning at the south corporation line connecting with an unnamed street; thence in a northeasterly direction to the east corporation line connecting with an unnamed street.

Beginning again on the east corporation line of the City of Redfield connecting with an unnamed street; thence northeasterly and easterly through Sections 4, 3, 2, and 1–T78N–R29W; thence easterly and northeasterly through the north part of Sections 6, 5, and 4–T78N–R28W and the south part of Sections 35 and 36–T79N–R28W and Section 31–T79N–R27W to the west corporation line of the City of Adel connecting with an unnamed street.

Adel:

Beginning at the west corporation line connecting with an unnamed street; thence northeasterly and easterly to the east corporation line connecting with an unnamed street.

Beginning again on the east corporation line of the City of Adel connecting with an unnamed street; thence in an easterly, south easterly, and northeasterly direction through Sections 32, 33, and 34-T79N-R27W to a point approximately 1,500 feet west of the NE Corner said Section 34; thence easterly following substantially the section line of Sections 35 and 36-T79N-R27W; and Sections 31 and 32-T79N-R26W to the west corporation limits of the City of Waukee connecting with an unnamed street.

Waukee:

Beginning at the west corporation line connecting with an unnamed street; thence easterly to the east corporation line connecting with an unnamed street.

Beginning again at the east corporation line of the City of Waukee connecting with an unnamed street; thence east following substantially the section line of Sections 35 and 36-T79N-R26W to the Dallas-Polk County line at a point near the NE Corner Section 36-T79N-R26W, Dallas County (NW Corner Section 31-T79N-R25W, Polk County).

REVISED: 12-18-86

COMMISSION ORDER

DIVISION: Planning & Research

COMMISSION ORDER NUMBER: PR-81-675

SUBMITTED BY: Patrick R. Cain

MEETING DATE: 4-28-81

DISCUSSION/BACKGROUND:

To maintain continuity in the US route numbering system, US 6 in Dallas County should be deleted from the primary road system and the new description added should be officially included in the primary road system.

US 6 begins at the Dallas–Madison County line approximately one mile southeast of the City of Dexter and proceeds northeasterly via the cities of Redfield, Adel, and Waukee to the Dallas–Polk County line approximately two miles west of the City of Clive.

PROPOSAL/ACTION RECOMMENDATION:

It is recommended the commission approve deleting the present description of US 6 in Dallas County from the primary road system and approve including the attached new description of US 6 in the primary road system.

Locate US 6 and its extensions in Dallas County as follows:

Beginning on the Dallas–Madison County line at a point approximately 1285 feet west of the SE Corner of Section 32–T78N–R29W, Dallas County (NE Corner of Section 5–T77N–R29W, Madison County); thence northeasterly through Sections 32 and 33–T78N–R29W to a point approximately 233 feet east and 1000 feet south of the N $\frac{1}{4}$ Corner of Section 33–T78N–R29W (junction Interstate 80); thence northerly through Sections 33, 28, and 21–T78N–R29W to a point approximately 400 feet south of the center of Section 21–T78N–R29W; thence in a northeasterly direction to a point approximately 800 feet south and $\frac{1}{4}$ mile west of the NE Corner of said Section 21; thence north, northwesterly, and northerly through Sections 21, 16, 9, and 4–T78N–R29W to the south corporation line of the City of Redfield, connecting with an unnamed street.

Redfield:

Beginning at the south corporation line connecting with an unnamed street; thence in a northeasterly direction to the east corporation line connecting with an unnamed street.

Beginning again on the east corporation line of the City of Redfield connecting with an unnamed street; thence northeasterly and easterly through Sections 4, 3, 2, and 1–T78N–R29W; thence easterly and northeasterly through the north part of Sections 6, 5, and 4–T78N–R28W and the south part of Sections 35 and 36–T78N–R28W and Section 31–T79N–R27W to the west corporation line of the City of Adel connecting with an unnamed street.

Adel:

Beginning at the west corporation line connecting with an unnamed street; thence northeasterly and easterly to the east corporation line connecting with an unnamed street.

Beginning again on the east corporation line of the City of Adel connecting with an unnamed street; thence in an easterly, southeasterly, and northeasterly direction along the south side of the Chicago, Milwaukee, St. Paul & Pacific Railroad and substantially parallel thereto through Sections 32, 33, and 34-T79N-R27W to a point approximately 1500 feet west of the NE Corner said Section 34; thence easterly following substantially the section line of Sections 35 and 36-T79N-R27W; and Sections 31 and 32-T79N-R26W to the west corporation limits of the City of Waukeez connecting with an unnamed street.

Waukeez:

Beginning at the west corporation line connecting with an unnamed street; thence easterly to the east corporation line connecting with an unnamed street.

Beginning again at the east corporation line of the City of Waukeez connecting with an unnamed street; thence east following substantially the section line of Sections 34, 35, and 36-T79N-R26W to the Dallas-Polk County line at a point near the NE Corner Section 36-T79N-R26W, Dallas County (NW Corner Section 31-T79N-R25W, Polk County).

REVISED: 12-13-82

COMMISSION ORDER

DIVISION: Planning & Research

COMMISSION ORDER NUMBER: PR-79-272

SUBMITTED BY: C.I. MacGillivray

MEETING DATE: 11-2-78

DISCUSSION/BACKGROUND:

Due to the review of our Primary Road System records, US 6 in Dallas County should be deleted from the Primary System and the new description added should be officially included into the Primary Road System.

US 6 begins at the Dallas–Guthrie County line in Dexter, Iowa and travels easterly, northerly, and easterly via Dexter, Redfield, Adel, and Waukee, Iowa to the Dallas–Polk County line approximately 2 miles east of Waukee, Iowa.

PROPOSAL/ACTION RECOMMENDATION:

Locate US 6 and its extensions in Dallas County as follows:

Dexter:

Beginning at the west corporation line connecting with an unnamed street; thence easterly to the east corporation line connecting with an unnamed street.

Beginning on the east corporation line of the City of Dexter connecting with unnamed street; thence east following substantially the section line of Sections 32 and 33–T78N–R29W to a point near the N $\frac{1}{4}$ Corner of said Section 33 (Interstate 80 Interchange); thence north through Sections 28 and 21–T78N–R29W to a point approximately 400 feet south of the center of Section 21–T78N–R29W; thence in a northeasterly direction to a point approximately 800 feet south and $\frac{1}{4}$ mile west of the NE Corner of said Section 21; thence north, northwesterly, and northerly through Sections 21, 16, 9, and 4–T78N–R29W to the south corporation line of the City of Redfield, connecting with an unnamed street.

Redfield:

Beginning at the south corporation line connecting with an unnamed street; thence in a northeasterly direction to the east corporation line connecting with an unnamed street.

Beginning again on the east corporation line of the City of Redfield connecting with an unnamed street; thence northeasterly and easterly through Sections 4, 3, 2, and 1-T78N-R29W; thence easterly and northeasterly through the north part of Sections 6, 5, and 4-T78N-R28W and the south part of Sections 35 and 36-T79N-R28W and Section 31-T79N-R27W to the west corporation line of the City of Adel connecting with an unnamed street.

Adel:

Beginning at the west corporation line connecting with an unnamed street; thence northeasterly and easterly to the east corporation line connecting with an unnamed street.

Beginning again on the east corporation line of the City of Adel connecting with an unnamed street; thence in an easterly, southeasterly, and northeasterly direction along the south side of the Chicago, Milwaukee, St. Paul & Pacific Railroad and substantially parallel thereto through Sections 32, 33, and 34-T79N-R27W to a point approximately 1500 feet west of the NE Corner said Section 34; thence easterly following substantially the section line of Sections 35 and 36-T79N-R27W; and Sections 31 and 32-T79N-R26W to the west corporation limits of Waukee connecting with an unnamed street.

Waukee:

Beginning at the west corporation line connecting with an unnamed street; thence easterly to the east corporation line connecting with an unnamed street.

Beginning again at the east corporation line of the City of Waukee connecting with an unnamed street; thence east following substantially the section line of Sections 34, 35, and 36-T79N-R26W to the Dallas-Polk County line at a point

near the NE Corner Section 36–T79N–R26W, Dallas County (NW Corner Section 31–T79N–R25W, Polk County).

NOW, THEREFORE: Be it resolved that the Iowa Department of Transportation approve the location of US 6 in Dallas County, Iowa.

NOTE: To become effective upon adoption of this resolution.

REVISED: 4–28–81

COMMISSION ORDER

DIVISION: Planning & Research

SUBMITTED BY: Raymond L. Kassel

MEETING DATE: 9–21–76

DISCUSSION/BACKGROUND:

Due to the review of our Primary Road System records, US 6 in Dallas County should be deleted from the Primary System and the new description added should be officially included into the Primary Road System.

US 6 begins at the Dallas–Guthrie County line in Dexter, Iowa and travels easterly, northerly, and easterly via Dexter, Redfield, Adel, and Waukee, Iowa to the Dallas–Polk County line approximately 2 miles east of Waukee, Iowa.

PROPOSAL/ACTION RECOMMENDATION:

Locate US 6 and its extensions in Dallas County as follows:

Dexter:

Beginning at the west corporation line connecting with an unnamed street; thence easterly to the east corporation line connecting with an unnamed street.

Beginning on the east corporation line of the City of Dexter connecting with unnamed street; thence east following substantially the section line of Sections 32 and 33-T78N-R29W to a point near the N $\frac{1}{4}$ Corner of said Section 33 (Interstate 80 Interchange); thence north through Sections 28 and 21-T78N-R29W to a point approximately 400 feet south of the center of Section 21-T78N-R29W; thence in a northeasterly direction to a point approximately 800 feet south and $\frac{1}{4}$ mile west of the NE Corner of said Section 21; thence north, northwesterly, and northerly through Sections 21, 16, 9, and 4-T78N-R29W to the south corporation line of the City of Redfield, connecting with an unnamed street.

Redfield:

Beginning at the south corporation line connecting with an unnamed street; thence in a northeasterly direction to the east corporation line connecting with an unnamed street.

Beginning again on the east corporation line of the City of Redfield connecting with an unnamed street; thence northeasterly and easterly through Sections 4, 3, 2, and 1-T78N-R29W; thence easterly and northeasterly through the north part of Sections 6, 5, and 4-T78N-R28W and the south part of Sections 35 and 36-T79N-R28W and Section 31-T79N-R27W to the west corporation line of the City of Adel connecting with an unnamed street.

Adel:

Beginning at the west corporation line connecting with an unnamed street; thence northeasterly and easterly to the east corporation line connecting with an unnamed street.

Beginning again on the east corporation line of the City of Adel connecting with an unnamed street; thence in an easterly, southeasterly, and northeasterly

direction along the south side of the Chicago, Milwaukee, St. Paul & Pacific Railroad and substantially parallel thereto through Sections 32, 33, and 34-T79N-R27W to a point approximately 1500 feet west of the NE Corner said Section 34; thence easterly following substantially the section line of Sections 35 and 36-T79N-R27W; and Sections 31 and 32-T79N-R26W to the west corporation limits of Waukee connecting with an unnamed street.

Waukee:

Beginning at the west corporation line connecting with an unnamed street; thence easterly to the east corporation line connecting with an unnamed street.

Beginning again at the east corporation line of the City of Waukee connecting with an unnamed street; thence east following substantially the section line of Sections 34, 35, and 36-T79N-R26W to the Dallas-Polk County line at a point near the NE Corner Section 36-T79N-R26W, Dallas County (NW Corner Section 31-T79N-R25W, Polk County).

NOW, THEREFORE: Be it resolved that the Iowa Department of Transportation approve the location of US 6 in Dallas County, Iowa.

NOTE: To become effective upon adoption of this resolution.

OFFICIAL DESCRIPTION CHANGE

COUNTY: Dallas

ROUTE: US 6

APPROVAL DATE: 12-13-66

Dexter:

Commencing on State Street at the west corporation line; thence easterly on State Street to the east corporation line.

Beginning on the east corporation line of the Town of Dexter connecting with State Street; thence east following substantially the section line to a point near the S $\frac{1}{4}$ Corner Section 28-T78N-R29W; thence north to a point approximately 400 feet south of the Center Section 21-T78N-R29W; thence in a northeasterly direction to a point approximately 800 feet south and $\frac{1}{4}$ mile west of the NE Corner Section 21-T78N-R29W; thence north to a point approximately 1,000 feet north and $\frac{1}{4}$ mile west of the SE Corner Section 9-T78N-R29W; thence in a northwesterly and northerly direction through Sections 9 and 4-T78N-R29W to the south corporation line of the Town of Redfield connecting with an unnamed street.

Redfield:

Commencing on an unnamed street at the south corporation line; thence in a northeasterly direction on said unnamed street to the east corporation line.

Beginning again on the east corporation line of the Town of Redfield connecting with an unnamed street on the south side of the Chicago, Milwaukee, St. Paul & Pacific Railroad; thence in a northeasterly direction along the south side of said railroad and substantially parallel thereto to a point approximately $\frac{1}{4}$ mile south and $\frac{1}{4}$ mile west of the NE Corner Section 3-T78N-R29W; thence east to a point approximately $\frac{1}{4}$ mile east and $\frac{1}{4}$ mile south of the NW Corner Section 5-T78N-R28W; thence in a northeasterly direction through Section 5 and 4-T78N-R28W to a point approximately 700 feet east of the NW Corner Section 4-T78N-R28W; thence east to a point approximately 400 feet west of the NE Corner Section 4-T78N-R28W; thence in a northeasterly direction through Section 35 and 36-T79N-R28W and Section 31-T79N-R27W to the west corporation line of the Town of Adel connecting with Greene Street.

Adel:

Commencing on Greene Street at the west corporation line; thence easterly on Greene Street to the east corporation line.

Beginning again on the east corporation line of the Town of Adel, connecting with Green Street; thence in an easterly direction along the south side of the Chicago, Milwaukee, St. Paul & Pacific Railroad and substantially parallel thereto through Sections 32, 33 and 34-T79N-R27W to a point approximately 1,500 feet west of the NE Corner Section 34-T79N-R27W; thence east following substantially the section line to the west corporation line of the Town of Waukeek connecting with an unnamed street.

Waukeek:

Commencing on an unnamed street at the west corporation line; thence easterly along said unnamed street to the east corporation line.

Beginning again at the east corporation line of the Town of Waukee connecting with an unnamed street; thence east following substantially the section line to the Dallas-Polk County line at a point near the NE Corner Section 36-T79N-R26W, Dallas County (NW Corner Section 31-T79N-R25W, Polk County).

COMMISSION RESOLUTION

DIVISION: Planning & Research

SUBMITTED BY: Gene Mills

Add to the Primary Road System the road,

Beginning on the east corporation line of the Town of Dexter connecting with State Street; thence east following substantially the section line to a point near the S $\frac{1}{4}$ Corner Section 28-T78N-R29W; thence north to a point approximately 400 feet south of the center of Section 21-T78N-R29W; thence in a northeasterly direction to a point approximately 800 feet south & $\frac{1}{4}$ mile west of the NE Corner Section 21-T78N-R29W; thence north to a point approximately 1000 feet north and $\frac{1}{4}$ mile west of the SE Corner Section 10-T78N-R29W; thence in a northwesterly and northerly direction through Sections 9 and 4-T78N-R29W to the south corporation line of the Town of Redfield, connecting with an unnamed street at a point approximately 300 feet west of the Center Section 4-T78N-R29W.

Beginning again on the east corporation line of the Town of Redfield connecting with an unnamed street on the south side of the Chicago, Milwaukee, St. Paul and Pacific Railroad; thence in a northeasterly direction along the south side of said railroad and substantially parallel thereto to a point approximately $\frac{1}{4}$ mile south and $\frac{1}{4}$ mile west of the NE Corner Section 3-T78N-R29W; thence east to a point approximately $\frac{1}{4}$ mile east and $\frac{1}{4}$ mile south of the NW Corner Section 5-T78N-R28W; thence in a northeasterly direction through Sections 5 and

4-T78N-R28W to a point approximately 700 feet east of the NW Corner Section 4-T78N-R28W; thence east to a point approximately 400 feet west of the NE Corner Section 4-T79N-R28W; thence in a northeasterly direction through Sections 35 and 26-T79N-R28W and Section 31-T79N-R27W to the west corporation line of the Town of Adel connecting with Greene Street.

Beginning again on the east corporation line of the Town of Adel connecting with Greene Street; thence in an easterly direction along the south side of the Chicago, Milwaukee, St. Paul & Pacific Railroad and substantially parallel thereto through Sections 32, 33 and 34-T79N-R27W to a point approximately 1500 feet west of the NE Corner Section 34-T79N-R27W; thence east following substantially the section line to the west corporation line of the Town of Waukeez at the NW Corner Section 33-T79N-R26W connecting with an unnamed street.

Beginning again at the east corporation line of the Town of Waukeez at the NE Corner Section 33-T79N-R26W; thence east following substantially the section line to the Dallas-Polk County Line at a point near the NE Corner Section 36-T79N-R26W, Dallas County (NW Corner Section 31-T79N-R25W, Polk County).

BE IT FURTHER RESOLVED that the Description of Primary Road No. US 6 in Dallas County in the Commission's minutes of September 7, 1960, is hereby rescinded and the attached description is adopted.

NOTE: To become effective upon adoption of this resolution.

COMMISSION RESOLUTION

DIVISION: Planning & Research

SUBMITTED BY: Gene Mills

Locate the Extension of US 6 on streets or roads as follows:

Commencing on Greene Street at the west corporation line; thence easterly on Greene Street to the east corporation line.

BE IT FURTHER RESOLVED that the Description of the Extension of US 6 in the City (Town) of Adel, Dallas County, as described and the description attached is adopted.

NOTE: To become effective upon adoption of this resolution.

COMMISSION RESOLUTION

DIVISION: Planning & Research

SUBMITTED BY: Gene Mills

Locate the Extension of US 6 on streets or roads as follows:

Commencing on an unnamed street at the west corporation line; thence easterly along said unnamed street to the east corporation line.

BE IT FURTHER RESOLVED that the Description of the Extension of US 6 in the City (Town) of Waukee, Dallas County, as described and the attached description is adopted.

NOTE: To become effective upon adoption of this resolution.

COMMISSION RESOLUTION

DIVISION: Planning & Research

SUBMITTED BY: Gene Mills

Remove from the Primary Road System the road,

Beginning on the Dallas–Madison County Line at a point approximately 1285 feet west of the SE Corner Section 32–T78N–R29W, Dallas County (NE Corner Section 5–T77N–R29W, Madison County); thence northeasterly through Sections 32 and 33–T78N–R29W to a point near the NE Corner Section 33–T78N–R29W; thence east following substantially the section line to a point near the N $\frac{1}{4}$ Corner Section 35–T78N–R27W; thence in a northeasterly direction to a point approximately 700 feet north of the S $\frac{1}{4}$ Corner Section 25–T78N–R27W; thence

in an easterly direction along the south side of the Chicago, Rock Island and Pacific Railway and substantially parallel thereto through Section 25-T78N-R27W and Sections 30, 29, 28, 27, 26 and 25-T78N-R26W to the Dallas-Polk County Line at a point approximately 1400 feet south of the NE Corner Section 25-T78N-R26W, Dallas County (NW Corner Section 30-T78N-R25W, Polk County).

BE IT FURTHER RESOLVED that the Description of US 6 in Dallas County in the Commission's minutes of September 7, 1960, is hereby rescinded.

NOTE: To become effective upon adoption of this resolution.