

OFFICIAL DESCRIPTION CHANGE

OFFICE: Transportation Data

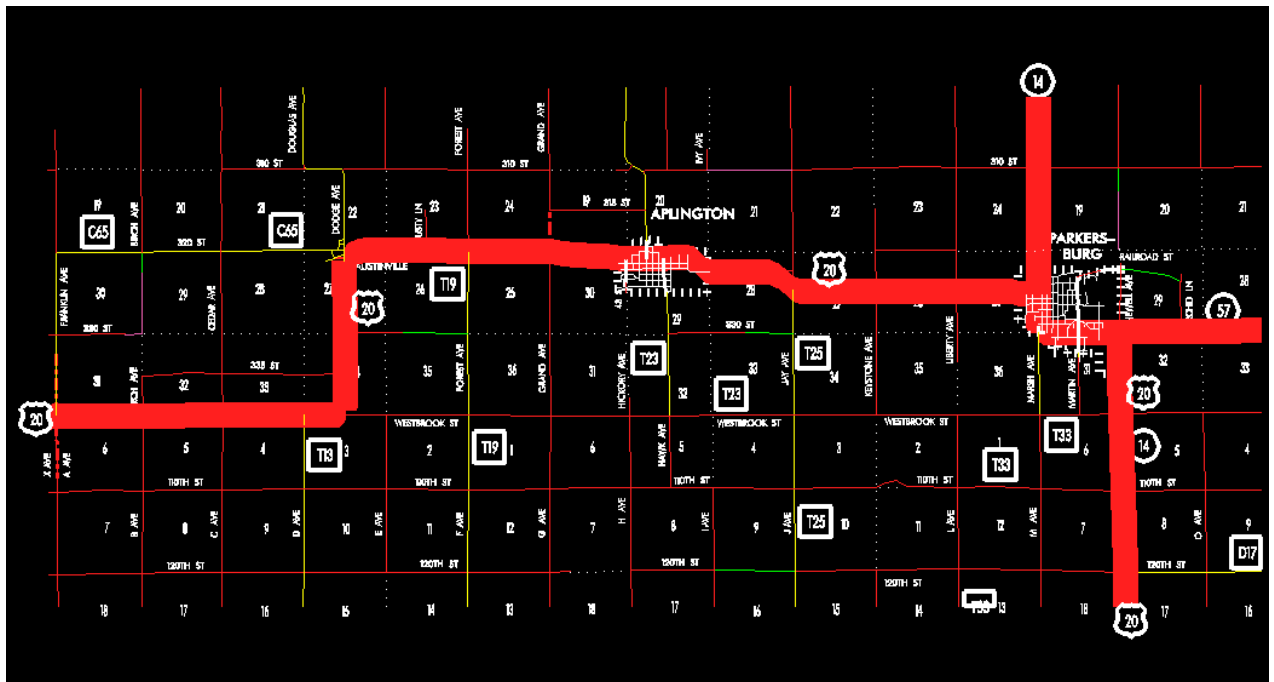
EFFECTIVE DATE: 08-22-2003

ENTERED BY: Stefani Wonders

ENTERED DATE: 01-20-2005

DISCUSSION/BACKGROUND:

US 20 was entirely relocated to Grundy County. The portion that was US 20 in Butler County has now been renamed to Unsigned Iowa 57.



STAFF ACTION

OFFICE: Transportation Inventory

STAFF ACTION NUMBER: S-87-1135

SUBMITTED BY: Patrick R. Cain

SUBMITTAL DATE: 2-11-87

DISCUSSION/BACKGROUND:

US 20 was relocated and opened to traffic on June 14, 1986 and runs duplicate with Iowa 14 from the Butler–Grundy County line at a point near the SW Corner Section 32–T90N–R16W approximately one (1) mile south of Parkersburg north to the present US 20 location at Parkersburg.

The old alignment of US 20 from a junction with relocated US 20 and Iowa 14 at Parkersburg near the NW Corner Section 32–T90N–R16W east and south to the Butler–Grundy County line at a point near the SW Corner Section 33–T90N–R15W approximately one half (½) mile south of New Hartford should be re-designated as Iowa 57. The remainder of US 20 remains unchanged.

US 20 begins at the SW Corner of Butler County approximately one half (½) mile east of Ackley east, north, east and south via Aplington and Parkersburg to the Butler–Grundy County line approximately one (1) mile south of Parkersburg.

PROPOSAL/ACTION RECOMMENDATION:

It is recommended to approve revising the description of US 20 in Butler County and including the new description in the primary road system.

New description: US 20 and its extensions in Butler County described as follows:

Beginning at a point near the SW Corner of Section 31–T90N–R18W, Butler County (SE Corner of Section 36–T90N–R19W, Franklin County) (NE Corner of Section 1–T89N–R19W, Hardin County) (NW Corner of Section 6–T89N–R18W, Grundy County); thence east along the Butler–Grundy County line (see Grundy County) to a point approximately 600 feet west of the S ¼ Corner of Section 34–T90N–R18W, Butler County (N ¼ Corner of Section 3–T89N–R18W, Grundy County); thence north following substantially the center section line of Sections 34 and 27–T90N–R18W to

a point approximately 400 feet south of the N $\frac{1}{4}$ Corner of Section 27-T90N-R18W; thence curving in a northeasterly direction to a point approximately 1,100 feet east of the N $\frac{1}{4}$ Corner of Section 27-T90N-R18W; thence east following substantially the section line of Sections 27, 26 and 25-T90N-R18W to a point near the NE Corner of Section 25-T90N-R18W; thence in a southeasterly and easterly direction through the north part of Section 30-T90N-R17W to the west corporation line of Aplington connecting with Parrott Street.

Aplington:

Beginning on Parrott Street at the west corporation line; thence east and southeast on Parrott Street to the east corporation line.

Beginning again at the east corporation line of Aplington connecting with Parrott Street; thence in an easterly and southeasterly direction through Sections 28 and 27-T90N-R17W to a point approximately 600 feet east of the W $\frac{1}{4}$ Corner of Section 27-T90N-R17W; thence east following substantially the center section line of Sections 27, 26 and 25-T90N-R17W to the west corporation line of Parkersburg connecting with Buswell Street.

Parkersburg:

Beginning on Buswell Street at the west corporation line; thence east on Buswell Street to 6th Street; thence south on 6th Street to an unnamed street; thence southeast and east on said unnamed street to the east corporation line.

Beginning again at the east corporation line of Parkersburg connecting with an unnamed street (junction Iowa 57); thence south following substantially the section line of Section 32-T90N-R16W to the Butler-Grundy County line at a point near the SW Corner Section 32-T90N-R16W, Butler County (NW Corner Section 5-T89N-R16W, Grundy County).

OFFICAL DESCRIPTION CHANGE

COUNTY: Butler

ROUTE: US 20

STAFF ACTION NUMBER: S-87-694

APPROVAL DATE: 12-18-86

New description – US 20 and its extensions in Butler County described as follows:

Beginning at a point near the SW Corner of Section 31–T90N–R18W, Butler County (SE Corner of Section 36–T90N–R19W, Franklin County) (NE Corner of Section 1–T89N–R19W, Hardin County) (NW Corner of Section 6–T89N–R18W, Grundy County); thence east along the Butler–Grundy County line (see Grundy County) to a point approximately 600 feet west of the S $\frac{1}{4}$ Corner of Section 34–T90N–R18W, Butler County (N $\frac{1}{4}$ Corner of Section 3–T89N–R18W, Grundy County); thence north following substantially the center section line of Sections 34 and 27–T90N–R18W to a point approximately 400 feet south of the N $\frac{1}{4}$ Corner of Section 27–T90N–R18W; thence curving in a northeasterly direction to a point approximately 1,100 feet east of the N $\frac{1}{4}$ Corner of Section 27–T90N–R18W; thence east following substantially the section line of Sections 27, 26, and 25–T90N–R18W, to a point near the NE Corner of Section 25–T90N–R18W; thence in a southeasterly and easterly direction through the north part of Section 30–T90N–R17W to the west corporation line of Aplington connecting with Parrott Street.

Aplington:

Beginning at the west corporation line on Parrott Street; thence easterly and southeasterly on Parrott street to the east corporation line.

Beginning again at the east corporation line of Aplington connecting with Parrott Street; thence in an easterly and southeasterly direction through Sections 28 and 27-T90N-R17W to a point approximately 600 feet east of the W ¼ Corner of Section 27-T90N-R17W; thence east following substantially the center section line of Sections 27, 26, and 25-T90N-R17W to the west corporation line of Parkersburg connecting with Buswell Street.

Parkersburg:

Beginning on Buswell Street at the west corporation line; thence easterly on Buswell Street to 6th Street; thence south on 6th Street to an unnamed street; thence east on an unnamed street to the east corporation line.

Beginning again at the east corporation line of Parkersburg connecting with an unnamed street; thence east following substantially the section line of Sections 32 (junction Iowa 14), 33 and 34-T90N-R16W to a point near the N.E. Corner of Section 34-T90N-R16W; thence in a southeasterly and easterly direction through Sections 35 and 36-T90N-R16W, and Sections 31 and 32-T90NR15W, to a point approximately 600 feet west of the east line of Section 32-T90N-R15W; thence curving in a southeasterly direction to a point on the east line of Section 32-T90N-R15W; thence south through Section 33-T90N-R15W to the Butler-Grundy County line at a point near the SW Corner of Section 33-T90N-R15W, Butler County (NW Corner of Section 4-T89N-R15W, Grundy County).

REVISED: 3-9-87

COMMISSION ORDER

DIVISION: Planning & Research

COMMISSION ORDER NUMBER: PR-79-272

SUBMITTED BY: C.I. MacGillivray
MEETING DATE: 11-2-78

DISCUSSION/BACKGROUND:

Due to a review of our Primary Road System records, US 20 in Butler County should be deleted and the new description added should be officially included into the Primary System.

US 20 begins at the Butler-Franklin-Hardin-Grundy County line approximately $\frac{1}{2}$ mile east of Ackley and travels easterly, northerly, easterly (junction Iowa 14), and southerly traveling through Aplington and Parkersburg to the Butler-Grundy County line approximately $\frac{1}{2}$ mile south of New Hartford.

PROPOSAL/ACTION RECOMMENDATION:

Locate US 20 and its extensions in Butler County as follows:

Beginning at a point near the SW Corner of Section 31-T90N-R18W, Butler County (SE Corner of Section 36-T90N-R19W, Franklin County) (NE Corner of Section 1-T89N-R19W, Hardin County) (NW Corner of Section 6-T89N-R18W, Grundy County); thence east along the Butler-Grundy County line (see Grundy County) to a point approximately 600 feet west of the S $\frac{1}{4}$ Corner of Section 34-T90N-R18W, Butler County (N $\frac{1}{4}$ Corner of Section 3-T89N-R18W, Grundy County); thence north following substantially the center section line of Sections 34 and 27-T90N-R18W to a point approximately 400 feet south of the N $\frac{1}{4}$ Corner of Section 27-T90N-R18W; thence curving in a northeasterly direction to a point approximately 1,100 feet east of the N $\frac{1}{4}$ Corner of Section 27-T90N-R18W; thence east following substantially the section line of Sections 27, 26, and 25-T90N-R18W, to a point near the NE Corner of Section 25-T90N-R18W; thence in a southeasterly and easterly direction through the north part of Section 30-T90N-R17W to the west corporation line of the City of Aplington connecting with an unnamed street.

Aplington:

Commencing at the west corporation line on an unnamed street; thence easterly and southeasterly on said unnamed street to the east corporation line.

Beginning again at the east corporation line of the City of Aplington connecting with an unnamed street; thence in an easterly and southeasterly direction through Sections 28 and 27-T90N-R17W to a point approximately 600 feet east of the W $\frac{1}{4}$ Corner of Section 27-T90N-R17W; thence east following substantially the center section line of Sections 27, 26, and 25-T90N-R17W to the west corporation line of the City of Parkersburg connecting with an unnamed street.

Parkersburg:

Commencing at the west corporation line connecting with an unnamed street easterly to Sixth Street; thence southerly on Sixth Street to an unnamed street; thence easterly on unnamed street to the east corporation line.

Beginning again at the east corporation line of the City of Parkersburg, connecting with an unnamed street (junction Iowa 14); thence east following substantially the section line of Sections 32, 33, and 34-T90N-R16W to a point near the NE Corner of Section 34-T90N-R16W; thence in a southeasterly and easterly direction through Sections 35 and 36-T90N-R16W, and Sections 31 and 32-T90N-R15W, to a point approximately 600 feet west of the east line of Section 32-T90N-R15W; thence curving in a southeasterly direction to a point on the east line of Section 32-T90N-R15W; thence south through Section 32-T90N-R15W to the Butler-Grundy County line at a point near the SE Corner of Section 32-T90N-R15W, Butler County (NE Corner of Section 5-T89N-R15W, Grundy County).

NOW, THEREFORE: Be it resolved that the Iowa Department of Transportation approve the location of US 20 in Butler County, Iowa.

NOTE: To become effective upon the adoption of this resolution.

REVISED: 12-18-86

COMMISSION ORDER

DIVISION: Planning & Research

SUBMITTED BY: Raymond L. Kassel

MEETING DATE: 8-10-76

DISCUSSION/BACKGROUND:

Due to a review of our Primary Road System records, US 20 in Butler County should be deleted and the new description added should be officially included into the Primary System. US 20 begins at the Butler-Franklin-Hardin-Grundy County line approximately ½ mile east of Ackley and travels easterly, northerly, easterly (junction Iowa 14), and southerly traveling through Aplington and Parkersburg to the Butler-Grundy County line approximately ½ mile south of New Hartford.

PROPOSAL/ACTION RECOMMENDATION:

Locate US 20 and its extensions in Butler County as follows:

Beginning at a point near the SW Corner of Section 31-T90N-R18W, Butler County (SE Corner of Section 36-T90N-R19W, Franklin County)(NE Corner of Section 1-T89N-R19W, Hardin County)(NW Corner of Section 6-T89N-R18W, Grundy County); thence east along the Butler-Grundy County line (see Grundy County) to a point approximately 600 feet west of the S ¼ Corner of Section 34-T90N-R18W, Butler County (N ¼ Corner

of Section 3-T89N-R18W, Grundy County); thence north following substantially the center section line of Sections 34 and 27-T90N-R18W to a point approximately 400 feet south of the N $\frac{1}{4}$ Corner of Section 27-T90N-R18W; thence curving in a northeasterly direction to a point approximately 1,100 feet east of the N $\frac{1}{4}$ Corner of Section 27-T90N-R18W; thence east following substantially the section line of Sections 27, 26, and 25-T90N-R18W, to a point near the NE Corner of Section 25-T90N-R18W; thence in a southeasterly and easterly direction through the north part of Section 30-T90N-R17W to the west corporation line of the City of Aplington connecting with an unnamed street.

Aplington:

Commencing at the west corporation line on an unnamed street; thence easterly and southeasterly on said unnamed street to the east corporation line.

Beginning again at the east corporation line of the City of Aplington connecting with an unnamed street; thence in an easterly and southeasterly direction through Sections 28 and 27-T90N-R17W to a point approximately 600 feet east of the W $\frac{1}{4}$ Corner of Section 27-T90N-R17W; thence east following substantially the center section line of Sections 27, 26, and 25-T90N-R17W to the west corporation line of the City of Parkersburg connecting with an unnamed street.

Parkersburg:

Commencing at the west corporation line connecting with an unnamed street easterly to Sixth Street; thence southerly on Sixth Street to an unnamed street; thence easterly on unnamed street to the east corporation line.

Beginning again at the east corporation line of the City of Parkersburg, connecting with an unnamed street (junction Iowa 14); thence east following substantially the section line of Sections 32, 33, and 34-T90N-R16W to a point near the NE Corner of Section 34-T90N-R16W; thence in a southeasterly and easterly direction through Sections 35 and 36-T90N-R16W, and Sections 31 and 32-T90N-R15W, to a point approximately 600 feet west of the east line of Section 32-T90N-R15W; thence curving in a southeasterly direction to a point on the east line of Section 32-T90N-R15W; thence south through Section 32-T90N-R15W to the Butler-Grundy County line at a point near the SE Corner of Section 32-T90N-R15W, Butler County (NE Corner of Section 5-T89N-R15W, Grundy County).

NOW, THEREFORE: Be it resolved that the Iowa Department of Transportation approve the location of US 20 in Butler County, Iowa.

NOTE: To become effective upon the adoption of this resolution.

OFFICAL DESCRIPTION CHANGE

COUNTY: Butler

CITY OF: Parkersburg

ROUTE: US 20

APPROVAL DATE: 2-7-68

Commencing on Buswell Street at the west corporation line; thence easterly on Buswell Street to Sixth Street; thence southerly on Sixth Street to an unnamed street; thence easterly on unnamed street to the east corporation line.

OFFICAL DESCRIPTION CHANGE

COUNTY: Butler

ROUTE: US 20

APPROVAL DATE: 4-14-37

Beginning at a point near the SW Corner of Section 31-T90N-R18W, Butler County (SE Corner of Section 36-T90N-R19W, Franklin County) (NE Corner of Section 1-T89N-R19W, Hardin County) (NW Corner of Section 6-T89N-R18W, Grundy County); thence east along the Butler-Grundy county line to a point approximately 600 feet west of the S $\frac{1}{4}$ Corner of Section 34-T90N-R18W, Butler County (N $\frac{1}{4}$ Corner of Section 3-T89N-R18W, Grundy County); thence north to a point approximately 400 feet south of the N $\frac{1}{4}$ Corner of Section 27-T90N-R18W; thence curving in a northeasterly direction to a point approximately 1,100 feet east of the N $\frac{1}{4}$ Corner of Section 27-T90N-R18W; thence east following substantially the section line to a point near the NE Corner of Section 25-T90N-R18W thence in a southeasterly and easterly direction through the north part of Section 30-T90N-R17W to the west corporation line of the Town of Aplington connecting with Patriot Street.

Beginning again on the east corporation line of the Town of Aplington connecting with an unnamed street; thence in a easterly and southeasterly direction through Section 28 and 27-T90N-R17W to a point approximately 600 feet east of the W $\frac{1}{4}$ Corner of Section 27-T90N-R17W thence east following substantially the quarter section line to the west corporation line of the Town of Parkersburg connecting with Buswell Street.

Beginning again on the east corporation line of the Town of Parkersburg, connecting with an unnamed street; thence east following substantially the section line to a point near the NE Corner of Section 34-T90N-R16W; thence in a southeasterly and easterly direction along the south side of the Illinois-Central Railroad and substantially parallel thereto through Section 35 and 36-T90N-R16W, and Section 31 and 32-T90N-R15W to a point approximately 600 feet west of the east line of Section 32-T90N-R15W, and 100 feet south of the Illinois-Central Railroad thence curving in a southeasterly direction to a point on the east line of Section 32-T90N-R15W approximately 700 feet south of the Illinois-Central Railroad thence south to the Butler-Grundy County line at a point near the SE Corner of Section 32-T90N-R15W, Butler County (NE Corner of Section 5-T89N-R15W, Grundy County)

OFFICIAL DESCRIPTION CHANGE

COUNTY: Butler

ROUTE: US 20

APPROVAL DATE: 4-14-37

South of the Illinois-Central Railroad; thence south to the Butler-Grundy County line at a point near the SE Corner of Section 32-T90N-R15W, Butler County (NE Corner of Section 5-T89N-R15W, Grundy County)

OFFICAL DESCRIPTION CHANGE

COUNTY: Butler

CITY OF: Aplington

ROUTE: US 20

APPROVAL DATE: 2-5-36

Commencing on Patriot Street at the west corporation line; thence easterly on Patriot Street approximately 3,895 feet to an unnamed street; thence southeasterly on said unnamed street approximately 1,700 feet to the east corporation line.