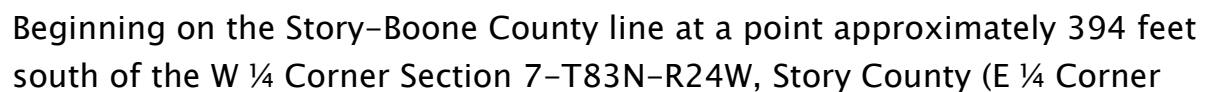
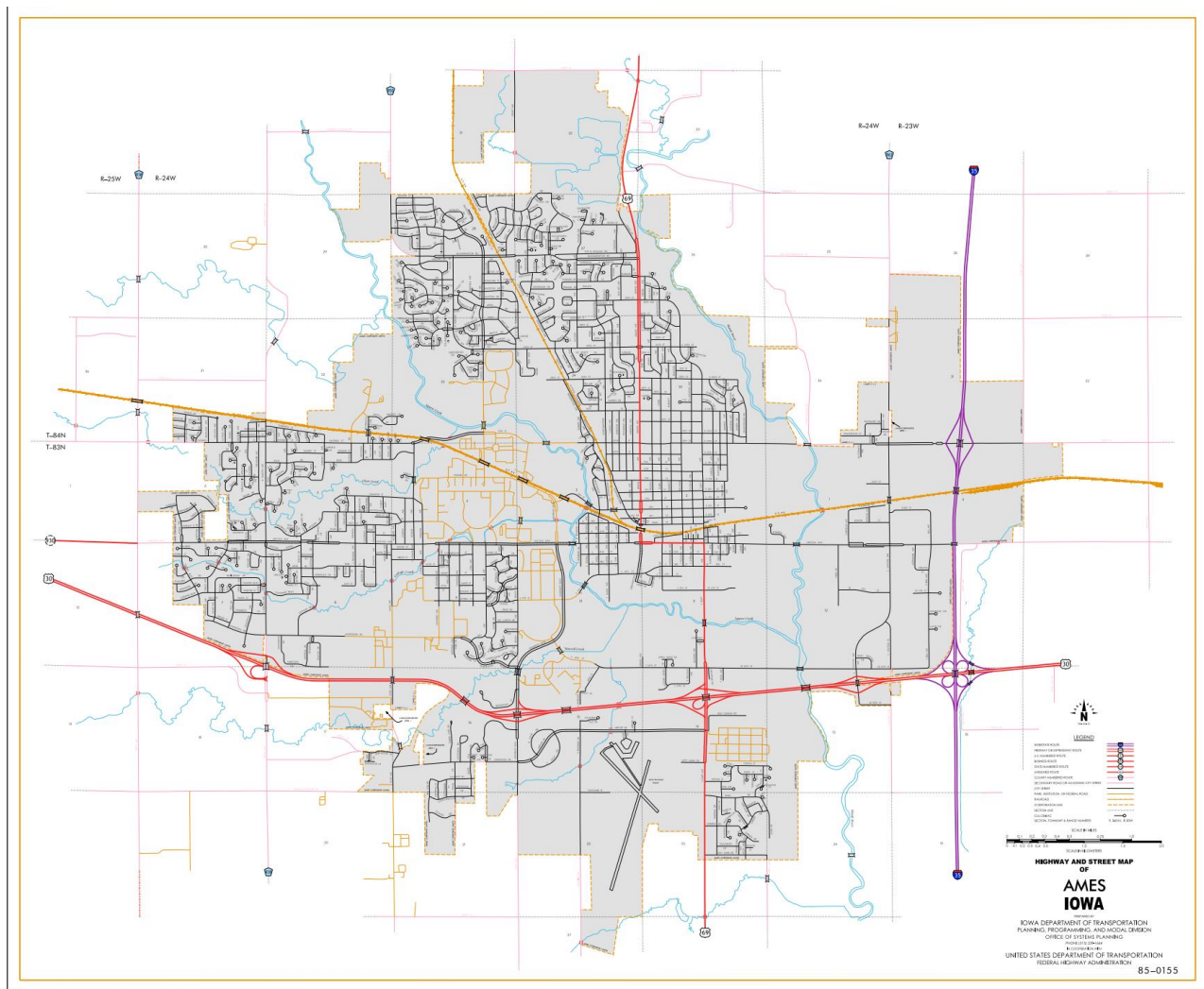


**ENTERED DATE: 12-23-2019**



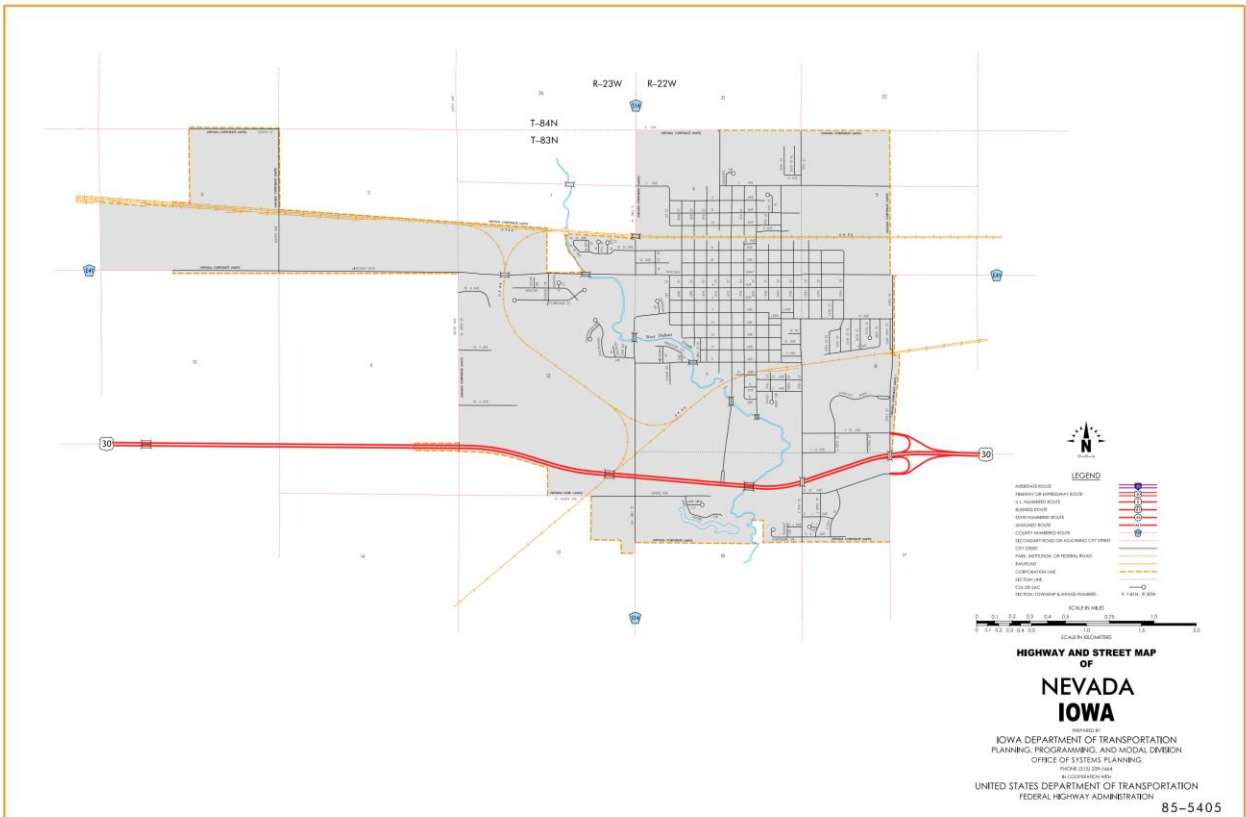
Section 12-T83N-R25W, Boone County); thence southeast through Sections 7 and 17-T83N-R24W to a point approximately 507 feet south and 468 feet west of the N ¼ Corner Section 17-T83N-R24W; thence east through Section 17-T83N-R24W to the west corporation line of Ames, connecting with an unnamed street.



Ames:

Beginning at the west corporation line; thence east, southeast, east and northeast to the east corporation line.

Beginning again at the east corporation line of Ames; thence northeast through Sections 18 (junction Interstate 35), 17 and 8–T83N–R23W to a point approximately 560 feet west and 105 feet north of the S ¼ Corner Section 8–T83N–R23W; thence east following substantially the south line of Sections 8, 9, 10 and 11– T83N–R23W to the west corporation line of Nevada.

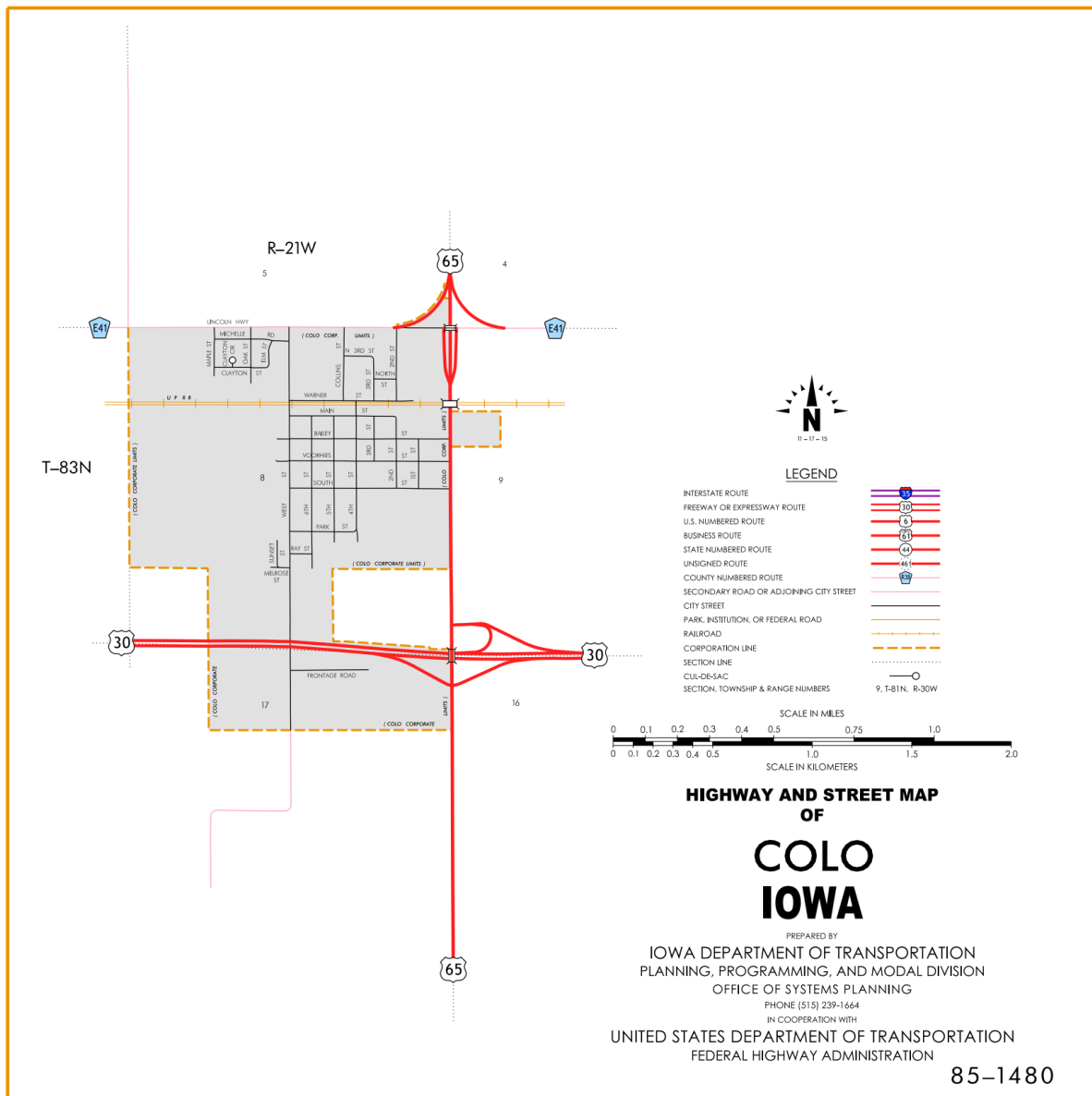


Nevada:

Beginning at the west corporation line; then east, southeast, east and northeast to the east corporation line.

Beginning again on the east corporation line of Nevada; thence east following substantially the section line through Sections 17 and 16–T83N–R22W to a point approximately 97 feet south of the NE Corner Section 16–T83N–R22W; thence east following substantially the section line through Sections 15, 14 and 13–T83N–R22W to a point approximately 1,750 feet east of the NW Corner

Section 13–T83N–R22W; thence east through the south part of Section 12–T83N–R22W to a point approximately 91 feet north of the SE Corner Section 12–T83N–R22W; thence east through Sections 7, 8 and 17–T83N–R21W to the west corporation line of Colo. thence east following substantially the section line of Sections 16, 15, 14 and 13–T83N–R21W to the Story–Marshall County line at a point near the SE Corner Section 12–T83N–R21W Story County (SW Corner Section 7–T83N–R20W Marshall County).



Colo:

Beginning at the west corporation line; thence east and southeast to the east corporation line at the junction of US 65.

Beginning again at the east corporation line of Colo at the junction of US 65; thence east following substantially the section line of Sections 16, 15, 14 and 13-T83N-R21W to the Story-Marshall County line at a point near the SE Corner Section 12-T83N-R21W Story County (SW Corner Section 7-T83N-R20W Marshall County).

#### **OFFICIAL DESCRIPTION CHANGE**

**County:** Story

**ROUTE:** US 30

**STAFF ACTION NUMBER:** S-87-1510

**APPROVAL DATE:** 5-13-87

New Description – US 30 and its extensions in Story County described as follows:

Beginning on the Story-Boone County line at a point approximately 394 feet south of the W  $\frac{1}{4}$  Corner Section 7-T83N-R24W, Story County (E  $\frac{1}{4}$  Corner Section 12-T83N-R25W, Boone County); thence southeast through Sections 7 and 17-T83N-R24W to a point approximately 507 feet south and 468 feet west of the N  $\frac{1}{4}$  Corner Section 17-T83N-R24W; thence east through Section 17-T83N-R24W to the west corporation line of Ames, connecting with an unnamed street.

Ames:

Beginning on an unnamed street at the west corporation line; thence east and southeast on an unnamed street to the south corporation line.

Beginning again on the south corporation line of Ames connecting with an unnamed street; thence southeast through Section 16-T83N-R24W; to the west corporation line of Ames, connecting with an unnamed street.

Ames:

Beginning on an unnamed street at the west corporation line; thence southeast, east and northeast on unnamed street to the east corporation line.

Beginning again on the east corporation line of Ames connecting with an unnamed street; thence northeast through Section 15-T83N-R24W to the west corporation line of Ames, connecting with an unnamed street.

Ames:

Beginning on the west corporation line connecting with an unnamed street; thence northeast to the east corporation line, connecting with an unnamed street.

Beginning again on the east corporation line of Ames connecting with an unnamed street; thence northeast through Section 13-T83N-R24W to the west corporation line of Ames, connecting with an unnamed street.

Ames:

Beginning on the west corporation line connecting with an unnamed street; thence northeast to the east corporation line connecting with an unnamed street.

Beginning again on the east corporation line of Ames connecting with an unnamed street; thence northeast through Sections 18 (junction Interstate 35), 17 and 8-T83N-R23W to a point approximately 560 feet west and 105 feet north of the S  $\frac{1}{4}$  Corner Section 8-T83N-R23W; thence east following substantially the south line of Sections 8, 9, 10, 11 and 12-T83N-R23W to a point 255 feet east and 100 feet north of the SW Corner Section

12-T83N-R23W; thence curving southeast through Sections 12 and 13-T83N-R23W to the west corporation line of Nevada, connecting with an unnamed street.

Nevada:

Beginning on the west corporation line connecting with an unnamed street; thence east to the east corporation line.

Beginning again on the east corporation line of Nevada connecting with an unnamed street; thence curving southeast and northeast through Sections 18 and 17-T83N-R22W to a point approximately 1,010 feet east and 30 feet south of the N  $\frac{1}{4}$  Corner Section 17-T83N-R22W; thence east following substantially the section line through Sections 17 and 16-T83N-R22W to a point approximately 97 feet south of the NE Corner Section 16-T83N-R22W; thence east following substantially the section line through Sections 15, 14 and 13-T83N-R22W to a point approximately 1,750 feet east of the NW Corner Section 13-T83N-R22W; thence east through the south part of Section 12-T83N-R22W to a point approximately 91 feet north of the SE Corner Section 12-T83N-R22W; thence east through Sections 7, 8 and 17-T83N-R21W to a point approximately 124 feet south of the NE Corner Section 17-T83N-R21W (junction US 65); thence east following substantially the section line of Sections 16, 15, 14 and 13-T83N-R21W to the Story-Marshall County line at a point near the SE Corner Section 12-T83N-R21W Story County (SW Corner Section 7-T83N-R20W Marshall County).

**COMMISSION ORDER**

**DIVISION:** Planning & Research

**COMMISSION ORDER NUMBER:** PR-79-272

**SUBMITTED BY:** C.I. MacGillivray

**MEETING DATE:** 11-2-78

**TITLE:** US 30, Story County, Iowa

**DISCUSSION/BACKGROUND:**

US 30 begins on the Story-Boone County line approximately 4 ½ miles west and ½ mile south of the center of Ames, and travels generally easterly via Ames and Nevada to the Story-Marshall County line approximately 4 ½ miles east and one mile south of Colo, Iowa.

Due to a review of our Primary Road System Records US 30 in Story County should be deleted and the new description added should be officially included into the Primary System.

**PROPOSAL/ACTION RECOMMENDATION:**

It is recommended that the old description of US 30 in Story County be deleted and the new description, as referred in the attached detailed description, be included in the Primary Road System effective upon the adoption of this resolution.



Locate US 30 and its extensions in Story County as follows:

Beginning on the Story–Boone County line at a point approximately 394 feet south of the W  $\frac{1}{4}$  Corner Section 7–T83N–R24W, Story County (E  $\frac{1}{4}$  Corner Section 12–T83N–R25W, Boone County); thence southeasterly through Sections 7 and 17–T83N–R24W to a point approximately 507 feet south and 468 feet west of the N  $\frac{1}{4}$  Corner Section 17–T83N–R24W; thence easterly through Section 17–T83N–R24W to the west corporation line of the City of Ames connecting with an unnamed street.

Ames:

Beginning on an unnamed street at the west corporation line; thence east and southeasterly on an unnamed street to the south corporation line.

Beginning again on the south corporation line of the City of Ames connecting with an unnamed street; thence southeasterly through Section 16–T83N–R24W to the west corporation line of the City of Ames connecting with an unnamed street.

Ames:

Beginning again on an unnamed street at the west corporation line; thence easterly and northeasterly on an unnamed street to the east corporation line.

Beginning again on the east corporation line of the City of Ames connecting with an unnamed street; thence northeasterly through Section 15–T83N–R24W to the west corporation line of the City of Ames connecting with an unnamed street.

Ames:

Beginning on the west corporation line connecting with an unnamed street; thence northeasterly to the east corporation line connecting with an unnamed street.

Beginning again on the east corporation line of the City of Ames connecting with an unnamed street; thence northeasterly through Section 13-T83N-R24W to the west corporation line of the City of Ames connecting with an unnamed street.

Ames:

Beginning on the west corporation line connecting with an unnamed street; thence northeasterly to the east corporation line connecting with an unnamed street.

Beginning again on the east corporation line of the City of Ames connecting with an unnamed street: thence northeasterly through Sections 13 (junction Interstate 35), 17, and 8-T83N-R23W to a point approximately 560 feet west and 105 feet north of the S  $\frac{1}{4}$  Corner Section 8-T83N-R23W; thence easterly following substantially the south line of Sections 8, 9, 10, 11, and 12-T83N-R23W to a point 255 feet east and 100 feet north of the SW Corner Section 12-T83N-R23W; thence curving southeasterly through Sections 12 and 13-T83N-R23W to the west corporation line of the City of Nevada connecting with an unnamed street.

Nevada:

Beginning on the west corporation line connecting with an unnamed street; thence easterly to the east corporation line connecting with an unnamed street.

Beginning again on the east corporation line of the City of Nevada connecting with an unnamed street; thence curving southeasterly and northeasterly through Sections 18 and 17-T83N-R21W to a point approximately 1010 feet east and 30 feet south of the N  $\frac{1}{4}$  Corner Section 17-T83N-R22W; thence easterly following substantially the section line through Sections 17 and 16-T83N-R22W to a point approximately 97 feet south of the NE Corner Section 16-T83N-R22W; thence easterly following substantially the section line through Sections 15, 14, and 13-T83N-R22W to a point approximately 1750 feet east of the NW Corner Section 13-T83N-R22W; thence easterly through the south part of Section 12-T83N-R22W to a point approximately 91 feet north of the SE Corner Section 12-T83N-R21W; thence easterly through Sections 7, 8 and 17-T83N-R21W to a point approximately 124 feet south of the NE Corner Section 17-T83N-R21W (junction US 65); thence easterly following substantially the section line of Sections 16, 15, 14, and 13-T83N-R21W to the Story-Marshall County line at a point near the SE Corner Sic. 12-T83N-R21W Story County (SW Corner Section 7-T83N-R20W Marshall County).

REVISED: 5-13-87

#### **COMMISSION RESOLUTION**

**DIVISION:** Planning & Research

**COMMISSION ORDER NUMBER:** 74-1026

**SUBMITTED BY:** Gene R. Mills

**MEETING DATE:** 8-21-74

**TITLE:** Approving the location of US 30 and its extension in Story County, Iowa

Locate US 30 and its extension in Story County, Iowa, as follows:

Beginning on the Story-Boone County line at a point approximately 394 feet south of the W  $\frac{1}{4}$  Corner Section 7-T83N-R24W, Story County (E  $\frac{1}{4}$  Corner Section 12-T83N-R25W, Boone County); thence southeasterly through Section

7-T83N-R24W to a point approximately 507 feet south and 468 feet west of the N  $\frac{1}{4}$  Corner Section 17-T83N-R24W; thence east to the west corporation line of the City of Ames connecting with an unnamed street.

Beginning again on the south corporation line of the City of Ames connecting with an unnamed street; thence southeasterly, east, and northeasterly through Sections 16 and 15-T83N-R24W to the west corporation line of the City of Ames connecting with an unnamed street.

Beginning again on the east corporation line of the City of Ames connecting with an unnamed street; thence northeasterly through Section 13-T83N-R24W to the west corporation line of the City of Ames connecting with an unnamed street.

Beginning again on the east corporation line of the City of Ames connecting with an unnamed street; thence northeasterly through Sections 18, 17 and 8-T83N-R23W to a point approximately 560 feet west and 105 feet north of the S  $\frac{1}{4}$  Corner Section 8-T83N-R23W; thence easterly following substantially the section line through Sections 8, 9, 10, 11 and 12-T83N-R23W to a point 255 east and 100 feet north of the SW Corner Section 12-T83N-R23W; thence curving southeasterly and easterly through Sections 12 and 13, T83N-R23W to the west corporation line of the City of Nevada connecting with an unnamed street.

Beginning again on the east corporation line of the City of Nevada connecting with an unnamed street; thence curving northeasterly and easterly through Sections 18 and 17-T83N-R22W to a point approximately 1,010 feet east and 30 feet south of the N  $\frac{1}{4}$  Corner Section 17-T83N-R22W; thence easterly following substantially the section line through Sections 17 and 16-T83N-R22W to a point approximately 97 feet south of the NE Corner Section 16-T83N-R22W; thence easterly following substantially the section line through Sections 15, 14, 13 and 12-T83N-R22W to a point approximately 91 feet north of the SE Corner Section 12-T83N-R22W; thence easterly following substantially the section line through Sections 7 and 8-T83N-R21W to a point approximately 90 feet north of the S  $\frac{1}{4}$  Corner Section 8-T83N-R21W; thence

easterly following substantially the section line through Section 8 and 17-T83N-R21W to a point approximately 124 feet south of the NE Corner Section 17-T83N-R21W; thence easterly following substantially the section line to a point approximately 17 feet north of the SE Corner Section 12-T83N-R21W, Story County (SW Corner Section 7-T83N-R20W, Marshall County).

Nevada

Commencing on an unnamed street at the west corporation line; thence east on unnamed street to the east corporation line (Intersection Iowa 133).

NOW, THEREFORE: Be it resolved that the Iowa State Highway Commission approve the location of US 30 and its extension in Story County, Iowa.

**COMMISSION RESOLUTION**

**DIVISION:** Planning & Research

**COMMISSION ORDER NUMBER:** 73-801

**SUBMITTED BY:** Gene R. Mills

**MEETING DATE:** 6-27-73

**TITLE:** Approving the revision of the location of US 30 and its extensions in Story County

Locate on US 30 and extensions in Story County, Iowa, as follows:

Beginning on the Story-Boone County line at a point approximately 394 feet south of the W  $\frac{1}{4}$  Corner Section 7-T83N-R24W, Story County (E  $\frac{1}{4}$  Corner Section 12-T83N-R25W, Boone County); thence southeasterly through Section 7-T83N-R24W to a point approximately 507 feet south and 468 feet west of the N  $\frac{1}{4}$  Corner Section 17-T83N-R24W; thence east to the west corporation line of the City of Ames connecting with an unnamed street.

Beginning again on an unnamed street at the west corporation line; thence east and northeasterly on unnamed street to the east corporation line.

Beginning again on the south corporation line of the City of Ames connecting with an unnamed street; thence southeasterly, east, and northeasterly through Sections 16 and 15-T83N-R24W to the west corporation line of the City of Ames connecting with an unnamed street.

Beginning again on the east corporation line of the City of Ames connecting with an unnamed street; thence northeasterly through Section 13-T83N-R24W to the West corporation line of the City of Ames connecting with an unnamed street.

Beginning again on the east corporation line of the City of Ames connecting with an unnamed street; thence northeasterly through Sections 18, 17 and 8-T83N-R23W to a point approximately 560 feet west and 105 feet north of the S  $\frac{1}{4}$  Corner Section 8-T83N-R23W; thence easterly following substantially the section line through Sections 8, 9, 10, 11 and 12-T83N-R23W to a point 255 feet east and 100 feet north of the SW Corner Section 12-T83N-R23W; thence curving southeasterly and easterly through Sections 12 and 13-T83N-R23W to a point approximately 735 feet south of the NE Corner Section 13-T83NR22W; thence easterly through Section 18-T83N-R22W to a point approximately 900 feet east and 825 feet south of the N  $\frac{1}{4}$  Corner Section 18-T83N-R22W; thence curving northeasterly and easterly through Sections 18 and 17-T83N-R22W to a point approximately 1,010 feet east and 30 feet south of the N  $\frac{1}{4}$  Corner Section 17-T83N-R22W; thence easterly following substantially the section line through Sections 17 and 16-T83N-R22W to a point approximately 97 feet south of the NE Corner Section 16-T83N-R22W; thence easterly following

substantially the section line through Sections 15, 14, 13 and 12-T83N-R22W to a point approximately 91 feet north of the SE Corner Section 12-T83N-R22W; thence easterly following substantially the section line through Sections 7 and 8-T83N-R21W to a point approximately 90 feet north of the S  $\frac{1}{4}$  Corner Section 8-T83N-R21W; thence easterly following substantially the section line through Section 8 and 17-T83N-R21W to a point approximately 124 feet south of the NE Corner Section 17-T83N-R21W; thence easterly following substantially the section line to a point approximately 17 feet north of the SE Corner Section 12-T83N-R21W, Story County (SW Corner Section 7--T83N-R20W, Marshall County).

Ames:

Beginning on an unnamed street at the west corporation line; thence east and southeasterly on unnamed street to the south corporation line.

NOW, THEREFORE: Be it resolved that the Iowa State Highway Commission approve the revision of US 30 and its extensions in Story County, Iowa.

#### **OFFICIAL DESCRIPTION CHANGE**

**County:** Story

**ROUTE:** US 30

**APPROVAL DATE:** 1-23-63

Beginning on the Story-Boone County line at a point approximately 859 feet north of the W  $\frac{1}{4}$  Corner Section 7-T83N-R24W Story County (E  $\frac{1}{4}$  Corner Section 12-T83N-R25W Boone County); thence southeasterly, easterly, southeasterly and northeasterly through Sections 7, 17, 16, 15 and 14-T83N-R24W to a point approximately 1247 feet south of the N  $\frac{1}{4}$  Corner Section 14-T83N-R24W; thence northeasterly through Sections 14 and 13-T83N-R24W and Section 18-T83N-R23W to a point approximately 270 feet south and 190 feet west of the N  $\frac{1}{4}$  Corner Section 18-T83N-R23W; thence

northeasterly through Sections 18, 17 and 8-T83N-R23W to a point approximately 560 feet west and 105 feet north of the S ¼ Corner Section 8-T83N-R23W; thence easterly following substantially the section line through Sections 8, 9, 10, 11 and 12-T83N-R23W to a point 255 feet east and 100 feet north of the SW Corner Section 12-T83N-R23W; thence curving southeasterly and easterly through Sections 12 and 13-T83N-R23W to a point approximately 735 feet south of the NE Corner Section 13-T83N-R22W; thence easterly through Section 18-T83N-R22W to a point approximately 900 feet east and 825 feet south of the N ¼ Corner Section 18-T83N-R22W; thence curving northeasterly and easterly through Sections 18 and 17-T83N-R22W to a point approximately 1010 feet east and 30 feet south of the N ¼ Corner Section 17-T83N-R22W; thence easterly following substantially the section line through Sections 17 and 16-T83N-R22W to a point approximately 97 feet south of the NE Corner Section 16-T83N-R22W; thence easterly following substantially the section line through Sections 15, 14, 13 and 12-T83N-R22W to a point approximately 91 feet north of the SE Corner Section 12-T83N-R22W; thence easterly following substantially the section line through Sections 7 and 8-T83N-R21W to a point approximately 90 feet north of the S ¼ Corner Section 8-T83N-R21W; thence easterly following substantially the section line through Section 8 and 17-T83N-R21W to a point approximately 124 feet south of the NE Corner Section 17-T83N-R21W; thence easterly following substantially the section line to a point approximately 17 feet north of the SE Corner Section 12-T83N-R21W Story County (SW Corner Section 7-T83N-R20W Marshall County).

#### **OFFICIAL DESCRIPTION CHANGE**

**County:** Story

**APPROVAL DATE:** 1-7-41

#### **CONNECTING CURVES**

**Junction of US 30 and US 65 east of Colo**



Beginning at a point approximately 1000 feet east of the SW Corner Section 4-T83N-R21W; thence curving in a northwesterly direction to a point approximately 1000 feet north of the SW Corner Section 4-T83N-R21W.

Beginning at a point approximately 1000 feet west of the SE Corner Section 5-T83N-R21W; thence curving in a northeasterly direction to a point approximately 1000 feet north of the SE Corner Section 5-T83N-R21W.

## **OFFICIAL DESCRIPTION CHANGE**

**County:** Story

**ROUTE:** US 30

**APPROVAL DATE:** 4-14-37

Beginning at a point near the NW Corner Section 7-T83N-R24W, Story County (NE Corner Section 12-T83N-R25W, Boone County); thence east following substantially the section line to a point approximately 800 feet west of the NE Corner Section 7-T83N-R24W; thence in a southeasterly, easterly and northeasterly direction through the north part of Section 7 and 8-T83N-R24W, to a point approximately 700 feet west of the N  $\frac{1}{4}$  Corner Section 8-T83N-R24W; thence east following substantially the section line to the west corporation line of the City of Ames, connecting with Lincoln Way.

Beginning again on the east corporation line of the City of Ames, connecting with Lincoln Way; thence east following substantially the section line to the west corporation line of the City of Nevada, connecting with Lincoln Way.

Beginning again on the east corporation line of the City of Nevada, connecting with Lincoln Way; thence east following substantially the section line to a point approximately 700 feet west of the N  $\frac{1}{4}$  Corner of Section 10-T83N-R22W; thence in a southeasterly and northeasterly direction through the north part of Section 10-T83N-R22W, crossing the Chicago, Rock Island and Pacific Railway overpass, and passing through the Chicago and Northwestern Railway subway to a point near the NE Corner Section 10-T83N-R22W; thence east following substantially the section line to the Story-Marshall County line at a point near the NE Corner Section 12-T83N-R21W, Story County (NW Corner Section 7-T83N-R20W, Marshall County)

**REVISED:** 12-23-63

**OFFICIAL DESCRIPTION CHANGE**

**County:** Story

**CITY OF:** Ames

**ROUTE:** US 30

**APPROVAL DATE:** 2-5-36

Commencing on Lincoln Way at the west corporation line; thence easterly on Lincoln Way to the east corporation line.

**OFFICIAL DESCRIPTION CHANGE**

**County:** Story

**CITY OF:** Nevada

**ROUTE:** US 30

**APPROVAL DATE:** 2-5-36

Commencing on Lincoln Way at the west corporation line; thence easterly on Lincoln Way to the east corporation line.