

OFFICIAL DESCRIPTION CHANGE

OFFICE: Transportation Data

EFFECTIVE DATE: 01-14-2005

ENTERED BY: Stefani Wonders

ENTERED DATE: 02-14-2005

DISCUSSION/BACKGROUND:

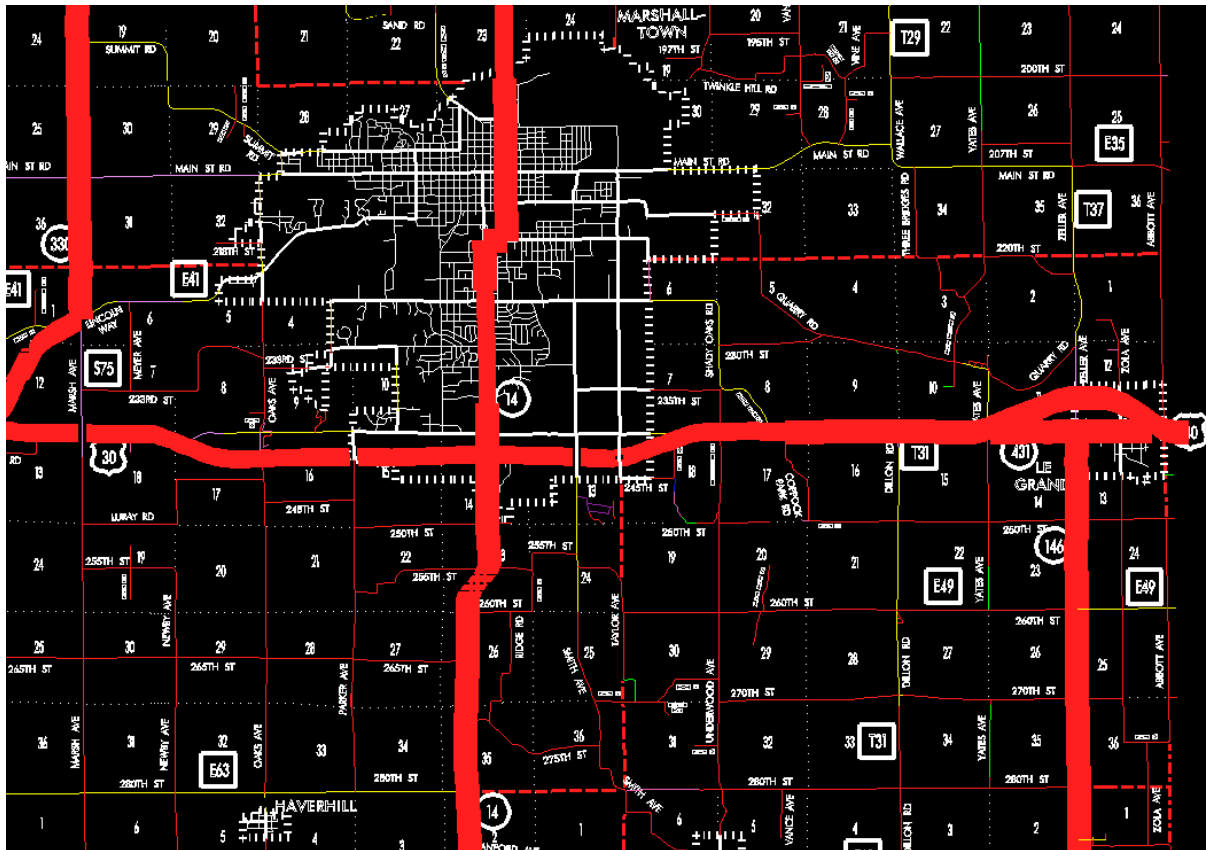
Beginning on the Marshall-Story County line at a point near the NW Corner of Section 18-T83N-R20W, Marshall County (NE Corner of Section 13-T83N-R21W, Story County); thence east following substantially the north section line of Sections 18, 17, 16 and 15, 14, and 13-T83N-R20W, Sections 18, 17, 16, 15, 14, and 13-T83N-R19W, and Section 18-T83N-R18W approximately 4030 feet east of the NW Corner of said Section 18; thence southeasterly through Sections 18 and 17-T83N-R18W to approximately 1430 feet south and 2640 feet east of the NW Corner of said Section 17; thence easterly through Sections 17 and 16-T83N-R18W to the west corporation line of Marshalltown (approximately 1450 feet south of the NE Corner of said Section 16).

Marshalltown:

Beginning at the west corporation line; thence east to the east corporation line (approximately 950 feet south and 1860 feet east of the NW Corner of Section 18-T83N-R17W).

Beginning again on the east corporation line of Marshalltown; thence northeasterly through Section 18-T83N-R17W to approximately the NE Corner of Section 18-T83N-R17W; thence easterly following substantially the section line of Sections 17, 16, and 15-T83N-R17W a point approximately 870 feet west of the NE Corner of said Section 15; thence northeasterly through Section 10 and 11-T83N-R17W to the west corporation line of Le Grand (approximately 2000 feet north of the SE Corner of said Section 11).

Le Grand:



STAFF ACTION

OFFICE: Transportation Inventory

STAFF ACTION NUMBER: S-97-1159

SUBMITTED BY: Patrick R. Cain

SUBMITTAL DATE:

DISCUSSION/BACKGROUND:

Due to construction and the relocation of US 30 to the south of Marshalltown in 1996, the official description of US 30 in Marshall County should be changed in the Primary Road System to reflect this.

Transfer of jurisdiction agreement number 90-TJ-003 between the Iowa Department of Transportation and the City of Marshalltown transferred portions of old US 30 to Marshalltown. A 0.35 kilometer (0.22 mile) section of old US 30 east of Marshalltown will become Unsigned Iowa 976.

PROPOSAL/ACTION RECOMMENDATION:

It is recommended the old description for US 30 in Marshall County be deleted from the Primary Road System and the new description, as described in the attachment, be added to the Primary Road System.

New Description – US 30 and its extensions in Marshall County described as follows:

Beginning on the Marshall–Story County line at a point near the NW Corner of Section 18–T83N–R20W, Marshall County (NE Corner of Section 13–T83N–R21W, Story County); thence east following substantially the section line of Sections 18, 17, 16 and 15–T83N–R20W to a point near the NE Corner said Section 15; thence in an easterly direction through the south part of Sections 11 and 12–T83N–R20W and Sections 7 and 8–T83N–R19W to a point approximately 457 meters (1,500 feet) east of the SW Corner of Section 8–T83N–R19W; thence easterly following substantially the section line of Sections 17 and 16–T83N–R19W to a point approximately 91 meters (300 feet) west of the NE Corner of Section 16–T83N–R19W; thence in a northeasterly, easterly and southeasterly direction through the south part of Sections 9, 10, 11–T83N–R19W to a point approximately 229 meters (750 feet) west of the SE Corner of Section 11–T83N–R19W; thence east following substantially the section line of Sections 11, 14 (junction of Iowa 330) and 13–T83N–R19W and Sections 18 and 17–T83N–R18W to approximately the N $\frac{1}{4}$ Corner of Section 17; thence in a southeasterly and easterly direction through Sections 17 and 16–T83N–R18W to the west corporation line of Marshalltown connecting with an unnamed street.

Marshalltown:

Beginning on an unnamed street at the west corporation line; thence east on an unnamed street to the east corporation line.

Beginning again on the east corporation line of Marshalltown connecting with an unnamed street; thence northeasterly through Section 18-T83N-R17W to approximately the NE Corner of Section 18-T83N-R17W; thence easterly following substantially the section line of Sections 17, 16, 15, and 14-T83N-R17W to the west corporation line of Le Grand connecting with Main Street.

Le Grand:

Beginning on Main Street at the west corporation line; thence east on Main Street to the east corporation line (Tama County line).

OFFICIAL DESCRIPTION CHANGE

COUNTY: Marshall

ROUTE: US 30

STAFF ACTION NUMBER: S-87-1531

APPROVAL DATE: 5-13-87

New description – US 30 and its extensions in Marshall County described as follows:

Beginning on the Marshall–Story County line at a point near the NW Corner of Section 18–T83N–R20W, Marshall County (NE Corner of Section 13–T93N–R21W, Story County); thence east following substantially the section line of Sections 18, 17, 16, and 15–T83N–R20W to a point near the NE Corner said Section 15; thence in an easterly direction through the south part of Sections 11 and 12–T83N–R20W and Sections 7 and 8–T83N–R19W to a point approximately 1,500 feet east of the SW Corner of Section 8–T83N–R19W; thence easterly following substantially the section line of Sections 17 and 16–T83N–R19W to a point approximately 300 feet west of the NE Corner of Section 16–T83N–R19W; thence in a northeasterly, easterly and southeasterly direction through the south part of Sections 9, 10, and 11–T83N–R19W to a point approximately 750 feet west of the SE Corner of Section 11–T83N–R19W; thence east following substantially the section line of Sections 11, 14 (junction of Iowa 330) and 13–T83N–R19W and Sections 18, 17, 16, and 15–T83N–R18W to the west corporation line of Marshalltown connecting with an unnamed street.

Marshalltown:

Beginning on an unnamed street at the west corporation line; thence east on an unnamed street to the east corporation line.

Beginning again on the east corporation line of Marshalltown connecting with an unnamed street; thence east following substantially the section line of Section 15–T83N–R18W to the west corporation line of Marshalltown connecting with an unnamed street.

Marshalltown:

Beginning on an unnamed street at the west corporation line; thence east an unnamed street to the east corporation line.

Beginning again on the east corporation line of Marshalltown connecting with an unnamed street; thence east following substantially the section line of Sections 15 and 14–T83N–R18W to the west corporation line of Marshalltown connecting with an unnamed street.

Marshalltown:

Beginning on an unnamed street at the west corporation line; thence east on unnamed street to the east corporation line.

Beginning again on the east corporation line of Marshalltown connecting with an unnamed street; thence easterly following substantially the section line of Section 13–T83N–R18W and Sections 16, 17, 16, 15, and 14–T83N–R17W to the west corporation line of Le Grand connecting with Main Street.

Le Grand:

Beginning on Main Street at the west corporation line; thence east on Main Street to the east corporation line (Tama County line).

STAFF ACTION

OFFICE: Transportation Inventory

STAFF ACTION NUMBER:

SUBMITTED BY: Patrick R. Cain

SUBMITTAL DATE:

DISCUSSION/BACKGROUND:

US 30 begins on the Marshall–Story County line approximately 3 miles west of State Center, Iowa and travels in an easterly direction via State Center, Marshalltown, and Le Grand, to the Marshall–Tama County line at Le Grand, Iowa.

The official description for US 30 in Marshall County was found to be incorrect in our official records. The existing description should be replaced with the corrected version.

PROPOSAL/ACTION RECOMMENDATION:

It is recommended to approve deleting the present description of US 30 in Marshall County from the primary road system and approve including the attached new description of US 30 in the primary road system.

Locate US 30 and its extensions in Marshall County as follows:

Beginning on the Marshall–Story County line at a point near the NW Corner of Section 18–T83N–R20W, Marshall County (NE Corner of Section 13–T33N–R21W, Story County); thence easterly following substantially the section line of Sections 18, 17, 16, and 15–T83N–R20W to a point near the NE Corner said Section 15; thence in an easterly direction through the south part of Sections 11 and 12–T83N–R20W and Sections 7 and 8–T83N–R19W to a point approximately 1500 feet east of the SW Corner of Section 8–T83N–R19W; thence easterly following substantially the section line of Sections 17 and 16–T83N–R19W to a point approximately 300 feet west of the NE Corner of Section 15–T83N–R19W;

thence in a northeasterly, easterly and southeasterly direction through the south part of Sections 9, 10, and 11–T83N–R19W to a point approximately 750 feet west of the SE Corner of Section 11–T83N–R19W; thence easterly following substantially the section line of Sections 14 (junction of Iowa 330) and 13–T83N–R19W and Sections 18, 17, 16, and 15–T83N–R18W to the west corporation line of the City of Marshalltown connecting with an unnamed street.

Marshalltown:

Beginning on the west corporation line connecting with an unnamed street; thence easterly to the easterly corporation line connecting with an unnamed street.

Beginning again on the easterly corporation line of the City of Marshalltown connecting with an unnamed street; thence easterly following substantially the section line of Section 15–T83N–R18W to the westerly corporation line of the City of Marshalltown connecting with an unnamed street.

Marshalltown:

Beginning on the westerly corporation line connecting with an unnamed street; thence easterly to the easterly corporation line connecting with an unnamed street.

Beginning again on the easterly corporation line of the City of Marshalltown connecting with an unnamed street; thence easterly following substantially the section line of Sections 15 and 14–T83N–R18W to the westerly corporation line of the City of Marshalltown connecting with an unnamed street.

Marshalltown:

Beginning on the westerly corporation line connecting with an unnamed street; thence easterly to the east corporation line connecting with an unnamed street.

Beginning again on the east corporation line of the City of Marshalltown connecting with an unnamed street; thence easterly following substantially the section line of Section 13-T83N-R18W and Sections 18, 17, 16, 15, and 14-T83N-R17W to the west corporation line of the City of Le Grand connecting with an unnamed street.

Le Grand:

Beginning on the west corporation line connecting with an unnamed street; thence easterly to the Marshall-Tama County line.

REVISED: 5-13-87

COMMISSION ORDER

DIVISION: Planning & Research

COMMISSION ORDER NUMBER: PR-79-272

SUBMITTED BY: C.I. MacGillivray

MEETING DATE: 11-2-78

DISCUSSION/BACKGROUND:

Due to a review of our Primary Road System records, US 30 in Marshall County should be deleted from the Primary Road System and the new description added should be officially included into the Primary Road System.

US 30 begins on the Marshall-Story County line approximately 3 miles west of State Center, Iowa and travels in an easterly direction via State

Center, Marshalltown, and Le Grand, Iowa to the Marshall–Tama County line at Le Grand, Iowa.

PROPOSAL/ACTION RECOMMENDATION:

Locate US 30 and its extensions in Marshall County as follows:

Beginning on the Marshall–Story County line at a point near the NW Corner of Section 18–T83N–R20W, Marshall County (NE Corner of Section 13–T83N–R21W, Story County); thence easterly following substantially the section line of Sections 18, 17, 16, and 15–T83N–R20W to the south corporation line of the City of State Center connecting with an unnamed street.

State Center:

Beginning on the south corporation line connecting with an unnamed street; thence easterly to the east corporation line connecting with an unnamed street.

Beginning again on the east corporation line of the City of State Center connecting with an unnamed street; thence in an easterly direction through the south part of Sections 11 and 12–T83N–R20W and Sections 7 and 8–T83N–R19W to a point approximately 1500 feet east of the SW Corner of Section 8–T83N–R19W; thence easterly following substantially the section line of Sections 17 and 16–T83N–R19W to a point approximately 300 feet west of the NE Corner of Section 16–T83N–R19W; thence in a northeasterly, easterly and southeasterly direction through the south part of Sections 9, 10, and 11–T83N–R19W to a point approximately 750 feet west of the SE Corner of Section 11–T83N–R19W; thence easterly following substantially the section line of Sections 14 (junction of Iowa 330) and 13–T83N–R19W and Sections 18, 17, 16, and 15–T83N–R18W to the west corporation line of the City of Marshalltown connecting with an unnamed street.

Marshalltown:

Beginning on the west corporation line connecting with an unnamed street; thence easterly to the easterly corporation line connecting with an unnamed street.

Beginning again on the easterly corporation line of the City of Marshalltown connecting with an unnamed street; thence easterly following substantially the section line of Section 15-T83N-R18W to the westerly corporation line of the City of Marshalltown connecting with an unnamed street.

Marshalltown:

Beginning on the westerly corporation line connecting with an unnamed street; thence easterly to the easterly corporation line connecting with an unnamed street.

Beginning again on the easterly corporation line of the City of Marshalltown connecting with an unnamed street; thence easterly following substantially the section line of Sections 15 and 14-T83N-R18W to the westerly corporation line of the City of Marshalltown connecting with an unnamed street.

Marshalltown:

Beginning on the westerly corporation line connecting with an unnamed street; thence easterly to the east corporation line connecting with an unnamed street.

Beginning again on the east corporation line of the City of Marshalltown connecting with an unnamed street; thence easterly following substantially the section line of Section 13-T83N-R18W and Sections 18, 17, 16, 15, and 14-T83N-R17W to the west corporation line of the City of Le Grand connecting with an unnamed street.

Le Grand:

Beginning on the west corporation line connecting with an unnamed street; thence easterly to the Marshall-Tama County line connecting with an unnamed street.

NOW, THEREFORE: Be it resolved that the Iowa Department of Transportation approve the location of US 30 in Marshall County, Iowa.

NOTE: To become effective upon the adoption of this resolution.

OFFICIAL DESCRIPTION CHANGE

COUNTY: Marshall

CITY OF: Marshalltown

ROUTE: US 30

APPROVAL DATE: 11-4-74

Commencing at the west corporation line on an unnamed street; thence east on unnamed street following substantially the section line to the east corporation line.

REVISED: 11-2-78

OFFICIAL DESCRIPTION CHANGE

COUNTY: Marshall

ROUTE: US 30

APPROVAL DATE: 1-23-63

Beginning on the Marshall–Story County line approximately 17 feet north of the SW Corner of Section 7–T83N–R20W, Marshall County (SE Corner Section 12–T83N–R21W, Story County); thence easterly following substantially the section line to the south corporation line of the Town of State Center connecting with an unnamed street.

Beginning again at the east corporation line of the Town of State Center; thence easterly and northeasterly through Sections 11 and 12–T83N–R20W to a point approximately 291 feet north of the SE Corner Section 12–T83N–R20W; thence easterly following substantially the section line to a point near the SE Corner Section 11–T83N–R19W; thence east following substantially the section line to the west corporation line of Marshalltown connecting with an unnamed street.

Beginning again on the east corporation line of Marshalltown, connecting with an unnamed street; thence east following substantially the section line to the west corporation line of the Town of Le Grand connecting with Main Street.

REVISED: 11–2–78

OFFICIAL DESCRIPTION CHANGE

COUNTY: Marshall

CITY OF: Le Grand

ROUTE: US 30

APPROVAL DATE: 10–5–54

Beginning on Main Street at the west corporation line; thence easterly on Main Street to the east corporation line (Tama County line).

REVISED: 1–23–63