

OFFICIAL DESCRIPTION CHANGE

OFFICE: Research and Analytics

EFFECTIVE DATE: 11-22-2019

COUNTY: Linn

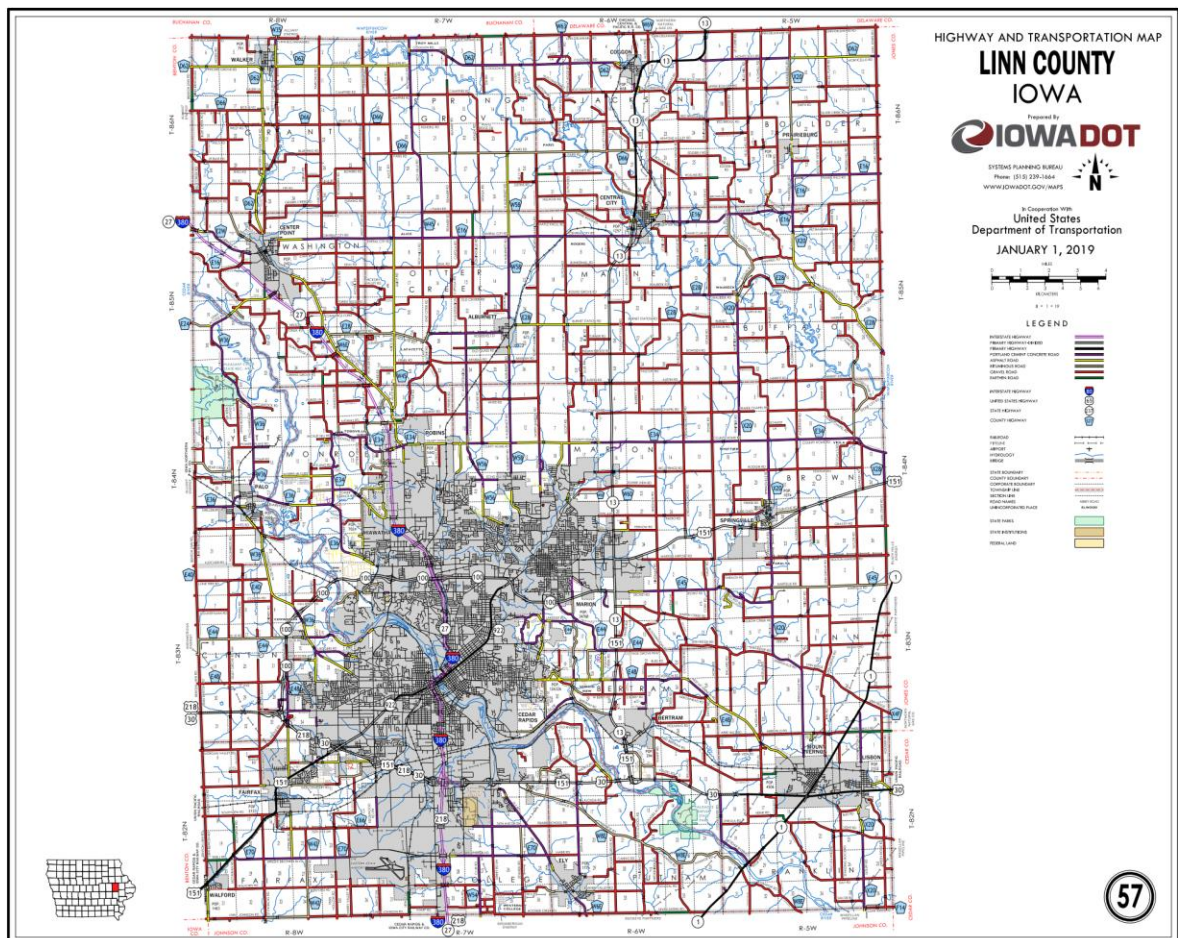
ROUTE: US 30

ENTERED BY: Paul Mauer

ENTERED DATE: 11-25-2019

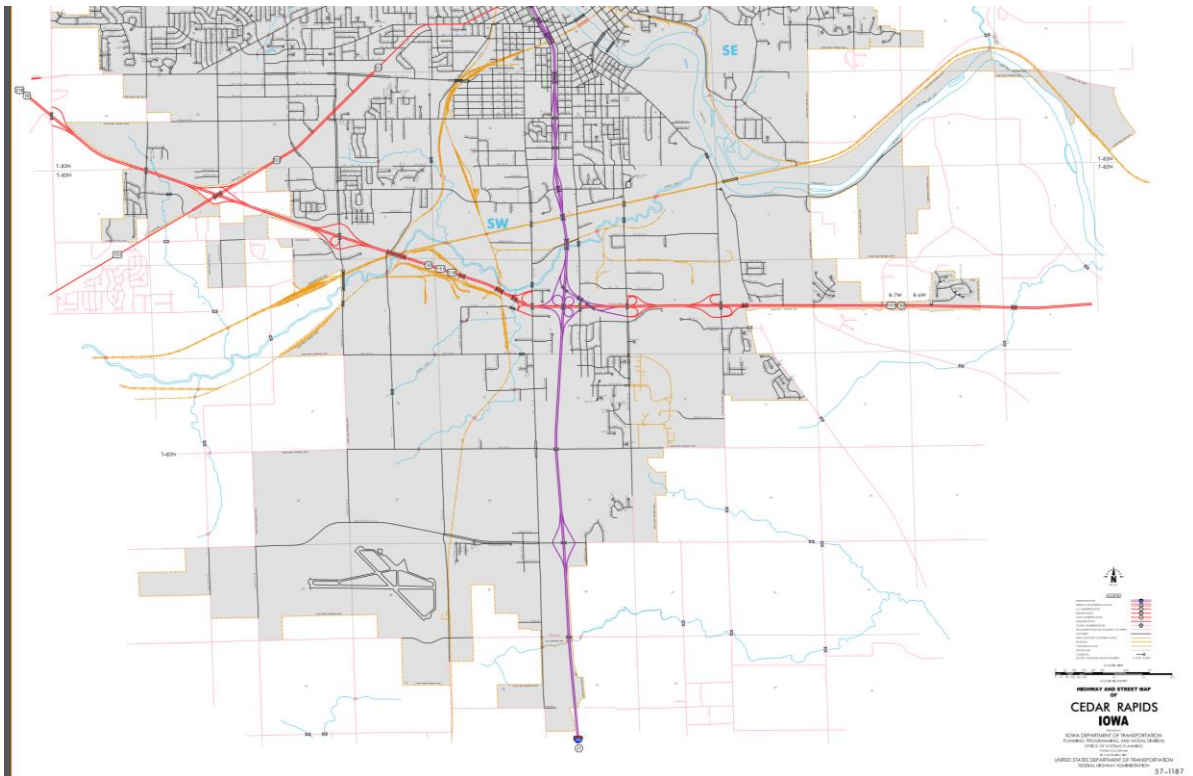
DISCUSSION/BACKGROUND:

Due to the opening of the new US 30 Mt. Vernon/Lisbon bypass it is recommended that the route description for US 30 in Linn County be updated.



New Description– US 30 and its extensions in Linn County are described as follows:

Beginning on the Linn–Benton County Line at a point near the NW Corner Section 31–T83N–R08W, Linn County (NE Corner Section 36–T83N–R09W, Benton County); thence east following substantially the section line of Sections 31, 32, and 33–T83N–R08W to a point near the NW Corner Section 33–T83N–R8W; thence southeasterly through Sections 33 (junction Iowa 100) and 34 to the west corporation line of the City of Cedar Rapids connecting with Lincoln Freeway.



Cedar Rapids:

Beginning at the west corporation line connecting with Lincoln Freeway; thence southeasterly through the west junction of US 151 and junction of Iowa 922; thence southeast and east through the junction of Interstate 380 and US 218; thence east to the east corporation line of Cedar Rapids.

Beginning again on the east corporation line of Cedar Rapids connecting with Lincoln Freeway; thence east through Sections 7, 8, 9 (east junction US 151 and junction Iowa 13), and 10-T82N-R06W and southeast through Sections 11 and 12-T82N-R6W to a point approximately 2,050 feet west of the SE Corner said Section 12; thence east through Section 13-T82N-R6W and Sections 18 and 17-T82N-R05W to the west corporation line of Mount Vernon.

Mt. Vernon:

Beginning at the west corporation line; thence southeasterly through the junction of Iowa 1 to the south corporation line.

Beginning again at the south corporation line of Mount Vernon; thence south and east through Sections 15 and 14-T82N-R05W to the west corporation line of Lisbon.

Lisbon:

Beginning at the west corporation line; thence east to the west corporation line.

Beginning again at the west corporation line of Lisbon; thence east and northeasterly through Sections 14 and 13-T82N-R05W to the south corporation line of Lisbon.

Lisbon:

Beginning at the south corporation line; thence northeasterly to the east corporation line.

Beginning again at the east corporation line of Lisbon; thence northeast through Section 13-T82N-R05W to the Linn-Cedar County Line a point approximately 2,175 feet south of the NE Corner of Section 13-T82N-R05W, Linn County (NW Corner Section 18-T82N-R04W, Cedar County).

STAFF ACTION

OFFICE: Transportation Inventory

STAFF ACTION NUMBER: S-95-350

SUBMITTED BY: Patrick R. Cain

SUBMITTAL DATE: 8-16-94

TITLE: US 30, Linn County

DISCUSSION/BACKGROUND:

Transfer of Jurisdiction Agreement TJ-30-0 (75) 57 between the Iowa Department of Transportation and Linn County, transferred these sections of roads to Linn County on January 1, 1987 and should be removed from the Primary Road System.

US 30/US 218 in Linn County from near the NW corner of Section 33-T83N-R8W easterly approximately 2.04 miles to west corporation line of Cedar Rapids, near the intersection of Stoney Point Road.

US 30/US 218 in Linn County from near the NW Corner Section 2-T82N-R8W northerly approximately 0.88 mile to the former junction of US 30/218 and Stoney Point Road.

PROPOSAL/ACTION RECOMMENDATION:

It is recommended that the sections of US 30/218 listed above be deleted from the Primary Road System.

STAFF ACTION

OFFICE: Transportation Inventory

STAFF ACTION NUMBER: S-95-322

SUBMITTED BY: Patrick R. Cain

SUBMITTAL DATE: 8-16-94

TITLE: US 30, Linn County

DISCUSSION/BACKGROUND:

Due to construction and the relocation of US 30 west of Cedar Rapids the official description change dated 5-13-87 was incorrect, which should be deleted from the Primary Road System and the attached description change added.

US 30 begins at the Linn-Benton County Line; thence east and southeast through the southern part of Cedar Rapids; thence northeast and east through Mount Vernon and Lisbon; thence east to the Linn-Cedar County Line.

PROPOSAL/ACTION RECOMMENDATION:

It is recommended the old description of US 30 in Linn County be deleted from the Primary Road System and the new description, as described in the attachment, be added to the Primary Road System.

New Description – US 30 and its extensions in Linn County described as follows:

Beginning on the Linn-Benton County Line at a point near the NW Corner Section 31-T83N-R8W, Linn County (NE Corner Section 36-T83N-R9W, Benton County); thence east following substantially the section line of Sections 31, 32, and 33-T83N-R8W to a point near the NW Corner Section 33-T83N-R8W; thence southeasterly through Sections 33 and 34 to a point approximately 75 feet south of the NW Corner Section 2-T82N-R8W; thence southeasterly through Sections 2 (junction US 151 and

Iowa 149) and 1-T82N-R8W to the west corporation line of Cedar Rapids connecting Lincoln Freeway.

Cedar Rapids:

Beginning on Lincoln Freeway at the west corporation line; thence southeast and east on Lincoln Freeway to the east corporation line.

Beginning again on the east corporation line of Cedar Rapids connecting with Lincoln Freeway; thence east through Sections 11 and 12-T82N-R7W and Sections 7, 8, 9 (junction Iowa 13), and 10-T82N-R6W and southeast through Sections 11 and 12-T82N-R6W to a point approximately 2,050 feet west of the SE Corner said Section 12; thence east through Section 13-T82N-R6W and Sections 18 and 17-T82N-R5W to the west corporation line of Mount Vernon connecting with an unnamed street.

Mount Vernon:

Beginning on an unnamed street at the west corporation line; thence easterly on unnamed street to the east corporation line (west corporation line of Lisbon connecting with Kirkwood Ave).

Lisbon:

Beginning on Kirkwood Avenue at the west corporation line (east corporation line of Mount Vernon); thence east on Kirkwood Avenue to the east corporation line.

Beginning again on the east corporation line of Lisbon connecting with Kirkwood Avenue; thence east following substantially the section line of Section 13-T82N-R5W to the Linn-Cedar County Line at a point near the NE Corner Section 13-T82N-R5W, Linn County (NW Corner Section 18-T82N-R4W, Cedar County).

OFFICIAL DESCRIPTION CHANGE

COUNTY: Linn

ROUTE: US 30

STAFF ACTION NUMBER: S-87-1539

APPROVAL DATE: 5-13-87

New description – US 30 and its extensions in Linn County described as follows:

Beginning on the Linn-Benton County line at a point near the NW Corner Section 31-T83N-R8W, Linn County (NE Corner Section 36-T83N-R9W, Benton County); thence east following substantially the section line of Sections 31, 32, 33, and 34-T83N-R8W to a point near the NW Corner Section 35-T83N-R8W; thence southerly following substantially the section line of Section 35-T83N-R8W and Section 2-T82N-R8W to a point approximately 75 feet south of the NW Corner said Section 2; thence southeasterly through Sections 2 (junction US 151 and Iowa 149) and 1-T82N-R8W to the west corporation line of Cedar Rapids connecting Lincoln Freeway.

Cedar Rapids:

Beginning on Lincoln Freeway at the west corporation line; thence southeast and east on Lincoln Freeway to the east corporation line.

Beginning again on the east corporation line of Cedar Rapids connecting with Lincoln Freeway; thence east through Sections 11 and 12-T82N-R7W and Sections 7, 8, 9 (junction Iowa 13), and 10-T82N-R6W and southeast through Sections 11 and 12-T82N-R6W to a point approximately 2,050 feet west of the SE Corner said Section 12; thence east through Section 13-T82N-R6W and Sections 18 and 17-T82N-R5W to the west corporation line of Mount Vernon connecting with an unnamed street.

Mount Vernon:

Beginning on an unnamed street at the west corporation line; thence easterly on unnamed street to the east corporation line (west corporation line of Lisbon connecting with Kirkwood Ave).

Lisbon:

Beginning on Kirkwood Avenue at the west corporation line (east corporation line of Mount Vernon); thence east on Kirkwood Avenue to the east corporation line.

Beginning again on the east corporation line of Lisbon connecting with Kirkwood Avenue; thence east following substantially the section line of Section 13-T82N-R5W to the Linn-Cedar County line at a point near the NE Corner Section 13-T82N-R5W, Linn County (NW Corner Section 18-T82N-R4W, Cedar County).

COMMISSION ORDER

DIVISION: Planning & Research

COMMISSION ORDER NUMBER: PR-82-451

SUBMITTED BY: Patrick R. Cain

MEETING DATE: 1-5-82

TITLE: US 30, Linn County

DISCUSSION/BACKGROUND:

US 30 begins on the Linn-Benton County line approximately four miles northwest of the City of Fairfax, and travels generally easterly via the cities of Cedar Rapids, Mount Vernon, and Lisbon to the Linn-Cedar County line approximately one mile east of the City of Lisbon.

The relocated portion of US 30 in the Cedar Rapids area was opened to traffic in the latter part of September 1981. The official description should be revised to reflect this change of alignment. The old alignment of US 30 in the Cedar Rapids area should be re-designated as unsigned Iowa 941.

PROPOSAL/ACTION RECOMMENDATION:

It is recommended the commission approve deleting the present description of US 30 in Linn County from the primary road system and approve including the attached new description of US 30 in the primary road system.

Locate US 30 and its extensions in Linn County as follows:

Beginning on the Linn-Benton County line at a point near the NW Corner Section 31-T83N-R8W, Linn County; thence east following substantially the section line of Sections 31, 32, 33, and 34-T83N-R8W to a point near the NW Corner Section 35-T83N-R8W; thence southerly following substantially the section line of Section 35-T83N-R8W and Section 2-T82N-R8W to a point approximately 75 feet south of the NW Corner said Section 2; thence southeasterly through Sections 2 (junction US 151 and Iowa 149) and 1-T82N-R8W to the west corporation line of the City of Cedar Rapids connecting with an unnamed street.

Cedar Rapids:

Beginning on the west corporation line connecting with an unnamed street; thence southeasterly and easterly to the east corporation line connecting with an unnamed street.

Beginning again on the east corporation line of the City of Cedar Rapids connecting with an unnamed street; thence easterly through Sections 11 and 12-T82N-R7W and Sections 7, 8, 9 (junction Iowa 13), and

10-T82N-R6W and southeasterly through Sections 11 and 12-T82N-R6W to a point approximately 2,050 feet west of the SE Corner said Section 12; thence easterly through Section 13-T82N-R6W and Sections 18 and 17-T82N-R5W to the west corporation line of the City of Mount Vernon connecting with an unnamed street.

Mount Vernon:

Beginning on the west corporation line connecting with an unnamed street; thence easterly to the east corporation line connecting with an unnamed street (west corporation line of the City of Lisbon).

Lisbon:

Beginning on the west corporation line (east corporation line of the City of Mount Vernon) connecting with an unnamed street; thence easterly to the east corporation line connecting with an unnamed street.

Beginning again on the east corporation line of the City of Lisbon connecting with an unnamed street; thence easterly following substantially the section line of Section 13-T82N-R5W to the Linn-Cedar County line at a point near the NE Corner Section 13-T82N-R5W, Linn County (NW Corner Section 18-T82N-R4W, Cedar County).

REVISED: 5-13-87

COMMISSION ORDER

DIVISION: Planning & Research

COMMISSION ORDER NUMBER: PR-79-272

SUBMITTED BY: C.I. MacGillivray

MEETING DATE: 11-2-78

TITLE: US 30, Linn County, Iowa

DISCUSSION/BACKGROUND:

Due to a review of our Primary Road System Records, US 30 in Linn County should be officially included into the Primary System.

PROPOSAL/ACTION RECOMMENDATION:

It is recommended that the description of US 30 in Linn County, as referred in the attached detailed description be included in the Primary Road System effective upon the adoption of this resolution.

Locate US 30 and its extensions in Linn County as follows:

Beginning on the Linn–Benton County Line at a point near the NW Corner Section 31–T83N–R8W, Linn County; thence east following substantially the section line to a point near the N $\frac{1}{4}$ Corner of Section 35–T83N–R8W; thence in an easterly direction through the north part of Sections 35 and 36–T83N–R3W and Section 31–T83N–R7W to the west corporation line of the City of Cedar Rapids, connecting with the extension of 16th Avenue SW at a point approximately 250 feet south of the N $\frac{1}{4}$ Corner of Section 31–T83N–R7W.

Cedar Rapids:

Beginning on 16th Avenue SW at the west corporation line at a point approximately 250 feet south of the N $\frac{1}{4}$ Corner Section 31–T83N–R7W; thence east in 16th Avenue SW to 6th Street SW; thence south on 6th Street SW to the south corporation line.

Beginning again at the south corporation line of the City of Cedar Rapids connecting with 6th Street SW; thence south along the west side of Sections 4 and 9–T82N–R7W to a point approximately 34 feet south of the W $\frac{1}{4}$ Corner of Section 9–T82N–R7W; thence east to approximately

the E ¼ Corner Section 10-T82N-R6W; thence southeasterly to the west corporation line of the town of Lisbon at a point 277.4 feet south of the NW Corner Section 14-T82N-R8W.

Lisbon:

Beginning on the west corporation line; thence easterly to the east corporation line.

Beginning again at the east corporation line of the Town of Lisbon at a point approximately 1329 feet east of the NW Corner Section 13-T82N-R5W; thence east to a point on the Linn-Cedar County line near the NE Corner Section 13-T82N-R5W.

REVISED: 1-5-82

OFFICIAL DESCRIPTION CHANGE

COUNTY: Linn

ROUTE: US 30

APPROVAL DATE: 11-4-53

Beginning on the Linn-Benton County line at a point near the N ¼ Corner Section 31-T83N-R8W, Linn County; thence east following substantially the section line to a point near the N ¼ Corner of Section 35-T83N-R8W; thence in an easterly direction through the north part of Sections 35 and 36-T83N-R8W and Section 31-T83N-R7W to the west corporation line of the City of Cedar Rapids, connecting with the extension of 16th Avenue SW at a point approximately 250 feet south of the N ¼ Corner of Section 31-T83N-R7W.

Cedar Rapids:

Beginning on 16th Avenue SW at the west corporation line at a point approximately 250 feet south of the N $\frac{1}{4}$ Corner Section 31-T83N-R7W; thence east on 16th Avenue SW to 6th street SW; thence south on 6th Street SW to the south corporation line.

Beginning again at the south corporation line of the City of Cedar Rapids connecting with 6th Street SW; thence south along the west side of Sections 4 and 9-T82N-R7W to a point approximately 34 feet south of the W $\frac{1}{4}$ Corner of Section 9-T82N-R7W; thence east to approximately the E Corner Section 10-T82N-R6W; thence southeasterly to the west corporation line of the Town of Lisbon at a point 277.4 feet south of the NW Corner Section 14-T82N-R5W.

Lisbon:

Beginning on the west corporation line; thence easterly to the east corporation line.

Beginning again at the east corporation line of the Town of Lisbon at a point approximately 1329 feet east of the NW Corner Section 13-T82N-R5W; thence east to a point on the Linn-Cedar County line near the NE Corner Section 13-T82N-R5W.