

**OFFICIAL DESCRIPTION CHANGE****OFFICE:** Transportation Data**EFFECTIVE DATE:** 10-12-2006**ENTERED BY:** Darlene Bovee**ENTERED DATE:** 11-14-2007

Due to the relocation east of Ottumwa and at Agency, the official route description in the Primary Road System should be revised to reflect this change.

New Description – US 34 and its extensions in Wapello County described as follows:

Beginning on the Wapello–Monroe County line at a point near the SW Corner of Section 19–T72N–R15W, Wapello County (SE Corner of Section 24–T72N–R16W, Monroe County); thence easterly following substantially the section line of Sections 19 and 20–T72N–R15W to a point approximately 1110 feet west of the SE Corner Section 20–T72N–R15W; thence southeasterly through Sections 29, 28, 27 and 26–T72N–R15W to a point approximately 1650 feet north and 715 feet west of the SE Corner Section 26–T72N–R15W; thence northeasterly and easterly through Sections 26 and 25–T72N–R15W and Sections 30, 29 and 28–T72N–R14W to a point approximately 2280 feet south and 720 feet east of the NW Corner Section 28–T72N–R14W; thence northeasterly through Sections 28 and 27–T72N–R14W to the west corporation line of Ottumwa connecting with unnamed street (approximately 280 feet south of the N  $\frac{1}{4}$  Corner Section 27–T72N–R14W).

Ottumwa:

Beginning on the west corporation line connecting with an unnamed street; thence northeasterly to the east corporation line connecting with an unnamed street (approximately 520 feet north and 400 feet west of the SE Corner Section 22–T72N–R14W).

Beginning again on the east corporation line of Ottumwa connecting with an unnamed street; thence northeasterly through Section 22-T72N-R14W to the west corporation line of Ottumwa connecting with an unnamed street (approximately 580 feet north of the SW Corner Section 23-T72N-R14W).

Ottumwa:

Beginning on an unnamed street at the west corporation line; thence easterly and southeasterly to the east corporation line connecting with an unnamed street (approximately 2250 feet east and 540 feet south of the NW Corner Section 31-T72N-R13W).

Beginning again on the east corporation line of Ottumwa connecting with an unnamed street; then easterly to the west corporation line connecting with an unnamed street (approximately 530 feet south of the NW Corner Section 32-T72N-R13W).

Ottumwa:

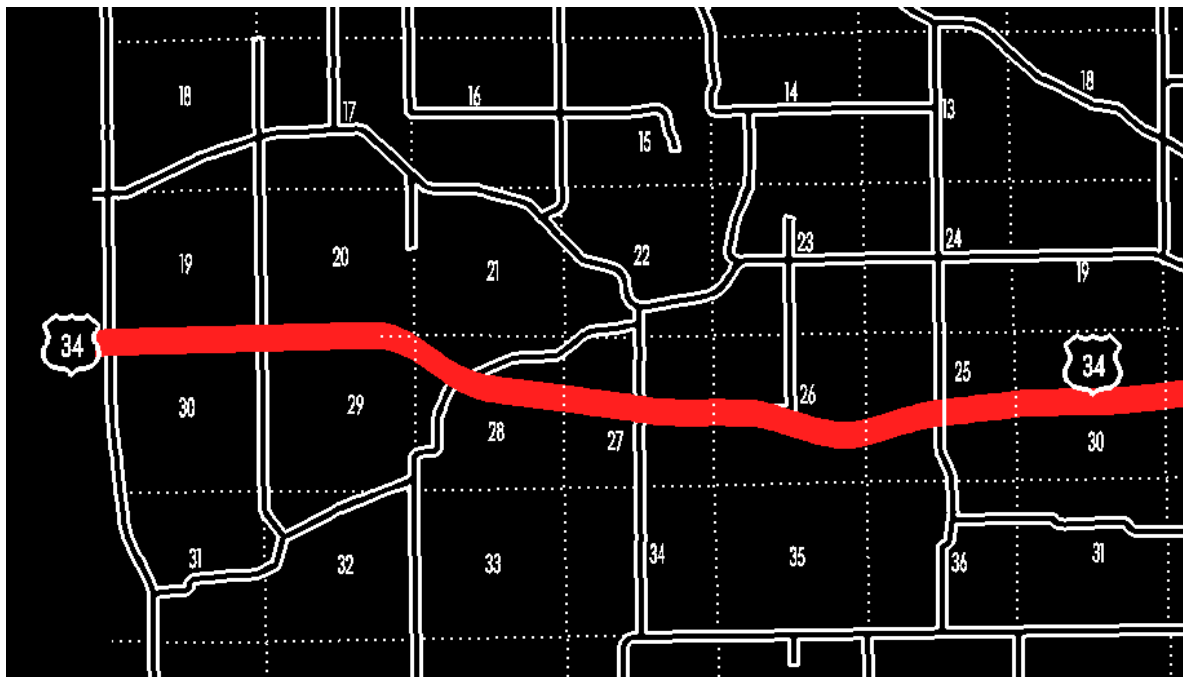
Beginning on an unnamed street at the west corporation line; thence northeasterly, northerly and northeasterly to the east corporation line connecting with an unnamed street (approximately 1640 feet south and 1330 feet east of the NW Corner Section 29-T72N-R13W).

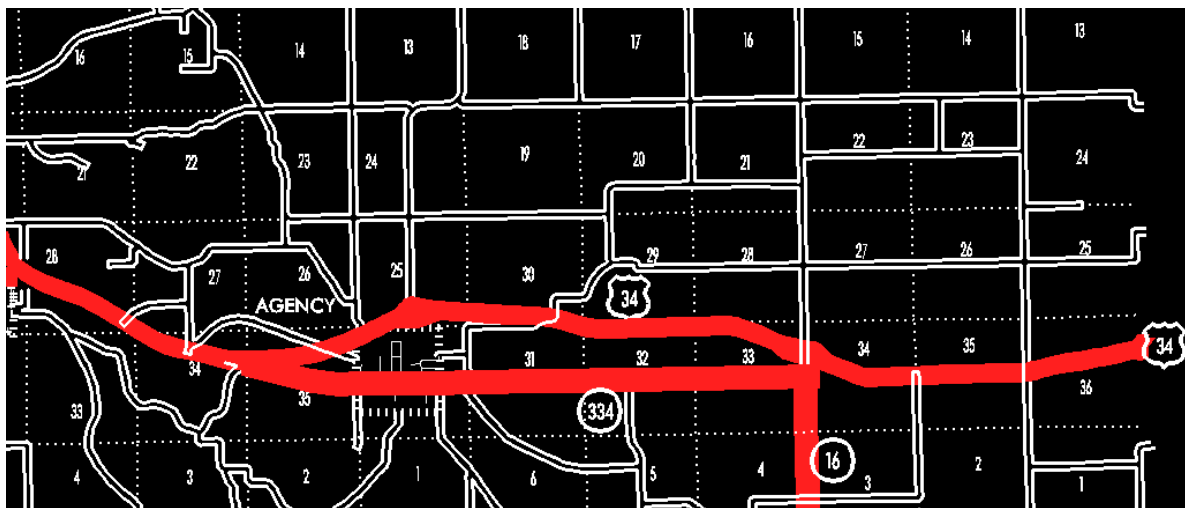
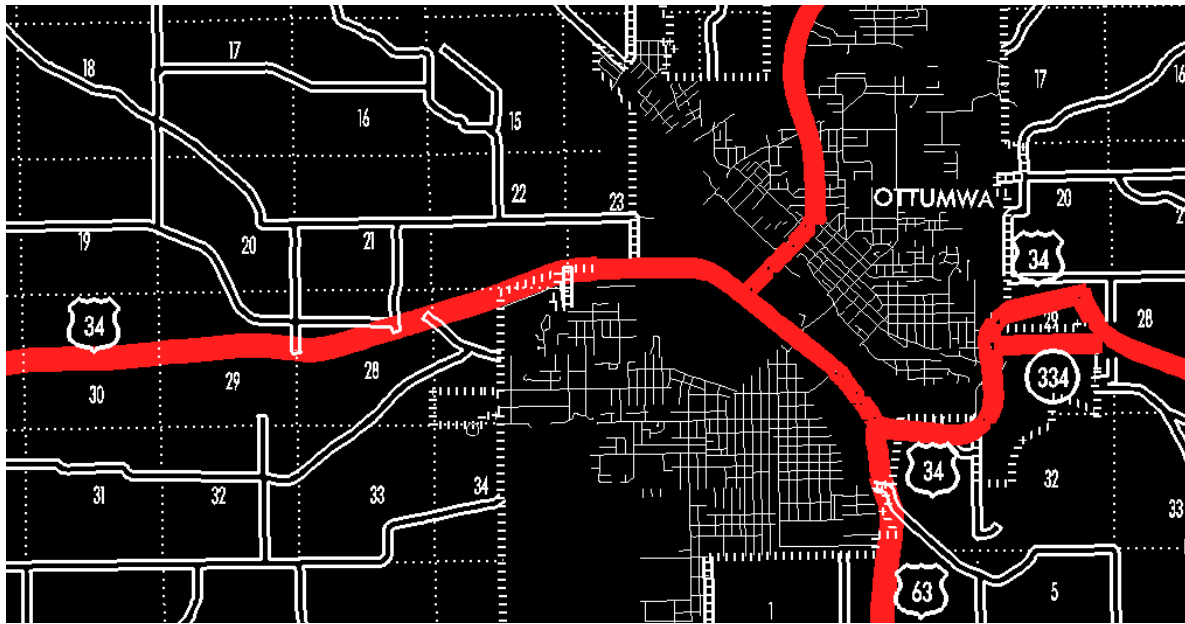
Beginning again on the east corporation line of Ottumwa connecting with an unnamed street; thence northeasterly through Section 29-T72N-R29W to a point approximately 1360 feet west and 630 feet south of the NE Corner Section 29-T72N-R13W; thence southeasterly through Sections 29, 28, 27 and 34-T72N-R13W to a point approximately 1360 feet south of the NW Corner Section 35-T72N-R13W; thence easterly and northeasterly to the west corporation line of Agency connecting with an unnamed street (approximately 450 feet south of the NW Corner Section 36-T72N-R13W).

Agency:

Beginning on an unnamed street at the west corporation line; thence northeasterly to the north corporation line connecting with an unnamed street (approximately 930 feet east of the NW Corner Section 36-T72N-R13W).

Beginning again on the north corporation line of Agency connecting with an unnamed street; thence northeasterly to a point approximately 700 feet north of the S  $\frac{1}{4}$  Corner Section 25-T72N-R13W; thence southeasterly through Section 25-T72N-R13W and Sections 30 and 31-T72N-R12W to near the NW Corner Section 32-T72N-R12W; thence easterly and southeasterly through Sections 32, 33 and 34-T72N-R12W to a point near the center of Section 34-T72N-R12W; thence easterly following substantially the center line through Sections 34 and 35-T72N-R12W to a point near the W  $\frac{1}{4}$  Corner Section 36-T72N-R12W; thence northeasterly to the Wapello-Jefferson County line (approximately 1000 feet north of the E  $\frac{1}{4}$  Corner Section 36-T72N-R12W, Wapello County) (W  $\frac{1}{4}$  Corner Section 31-T72N-R11W, Jefferson County).





**OFFICIAL DESCRIPTION CHANGE**

**COUNTY:** Wapello

**ROUTE:** US 34

**STAFF ACTION NUMBER:** S-87-1505

**APPROVAL DATE:** 5-13-87

New Description – US 34 and its extensions in Wapello County described as follows:

Beginning on the Wapello–Monroe County line at a point near the SW Corner of Section 19–T72N–R15W Wapello County (SE Corner of Section 24–T72N–R16W Monroe County); thence east and southeast through the south part of Sections 19 and 20–T72N–R15W to a point near the SE Corner of Section 20–T72N–R15W; thence southeast through Sections 29, 28 and 27–T72N–R15W to a point near the center of Section 27–T72N–R15W; thence east following substantially the center section line of Sections 27 and 26–T72N–R15W to a point near the center of Section 26–T72N–R15W; thence curving east–southeast through the SE  $\frac{1}{4}$  of Section 26–T72N–R15W and east–northeast through the SW  $\frac{1}{4}$  of Section 25–T72N–R15W to a point near the center of Section 25–T72N–R15W; thence east following substantially the center section line of Section 25–T72N–R15W and Sections 30 and 29–T72N–R14W to a point near the W  $\frac{1}{4}$  Corner of Section 28–T72N–R14W; thence northeast and east through Sections 28, 27, 22 and 23–T72N–R14W to the west corporation line of Ottumwa, connecting with an unnamed street.

Ottumwa:

Beginning on the west corporation line connecting with an unnamed street; thence east, southeast and east to the east corporation line, connecting with an unnamed street.

Beginning again on the east corporation line of Ottumwa connecting with an unnamed street; thence east and northeast through Sections 31 and 32–T72N–R13W to the south corporation line of Ottumwa, connecting with an unnamed street.

Ottumwa:

Beginning on an unnamed street at the south corporation line; thence north an unnamed street to Roemer Avenue; thence east and southeast on Roemer Avenue to the east corporation line.

Beginning again on the east corporation line of Ottumwa connecting with Roemer Avenue; thence east, southeast and east through Sections 29, 28, 27, 34 and 35-T72N-R13W to the west corporation line of Agency, connecting with Main Street.

Agency:

Beginning on Main Street at the west corporation line; thence east on Main Street to the east corporation line.

Beginning again on the east corporation line of Agency connecting with Main Street; thence east following substantially the center section line of Section 36-T72N-R13W and Sections 31, 32; 33 (junction Iowa 16), 34 and 35-T72N-R12W to a point near the W  $\frac{1}{4}$  Corner of Section 36-T72N-R12W; thence in a northeasterly direction through Section 36-T72N-R12W to the Wapello-Jefferson County line at a point approximately 1,000 feet north of the E  $\frac{1}{4}$  Corner of Section 36-T72N-R12W Wapello County (W  $\frac{1}{4}$  Corner of Section 31-T72N-R11W Jefferson County).

**COMMISSION ORDER**

**DIVISION:** Planning & Research

**COMMISSION ORDER NUMBER:** PR-79-272

**SUBMITTED BY:** C.I. MacGillivray

**MEETING DATE:** 11-2-78

**TITLE:** US 34, Wapello County, Iowa

**DISCUSSION/BACKGROUND:**

US 34 begins on the Wapello-Monroe County line approximately 3 ½ miles north of Blakesburg; and travels generally easterly via Ottumwa and Agency to the Wapello-Jefferson County line approximately 6 ¾ miles north of the SE Corner of Wapello County, Iowa.

Due to a review of our Primary Road System Records US 34 in Wapello County should be deleted and the new description added should be officially included into the Primary System.

**PROPOSAL/ACTION RECOMMENDATION:**

It is recommended that the old description of US 34 in Wapello County be deleted and the new description, as referred in the attached detailed description, be included in the Primary Road System effective upon the adoption of this resolution.

Locate US 34 and its extensions in Wapello County as follows:

Beginning on the Wapello–Monroe County line at a point near the SW Corner of Section 19–T72N–R15W Wapello County (SE Corner of Section 24–T72N–R16W Monroe County); thence easterly and southeasterly through the south part of Sections 19 and 20–T72N–R15W to a point near the SE Corner of Section 20–T72N–R15W; thence southeasterly through Sections 29, 28, and 27–T72N–R15W to a point near the center of Section 27–T72N–R15W; thence easterly following substantially the center section line of Sections 27 and 26–T72N–R15W to a point near the center of Section 26–T72N–R15W; thence curving east–southeasterly through the SE  $\frac{1}{4}$  of Section 26–T72N–R15W and east–northeasterly through the SW  $\frac{1}{4}$  of Section 25–T72N–R15W to a point near the center of Section 25–T72N–R15W; thence easterly following substantially the center section line of Section 25–T72N–R15W and Sections 30 and 29–T72N–R14W to a point near the W  $\frac{1}{4}$  Corner of Section 28–T72N–R14W; thence northeasterly and easterly through Sections 28, 27, 22, and 23–T72N–R14W to the west corporation line of the City of Ottumwa connecting with an unnamed street.

Ottumwa:

Beginning on the west corporation line connecting with an unnamed street; thence easterly, southeasterly, and easterly to the, easterly corporation line connecting with an unnamed street.

Beginning again on the easterly corporation line of the City of Ottumwa connecting with an unnamed street; thence easterly and northeasterly through Sections 31 and 32–T72N–R13W to the south corporation line of the City of Ottumwa connecting with an unnamed street.

Ottumwa:

Beginning again on the south corporation line connecting with an unnamed street; thence northerly and easterly to the east corporation line connecting with an unnamed street.

Beginning again on the east corporation line of the City of Ottumwa connecting with an unnamed street; thence easterly, southeasterly and easterly through Sections 29, 28, 27, 34, and 35-T72N-R13W to the west corporation line of the City of Agency connecting with an unnamed street.

Agency:

Beginning on the west corporation line connecting with an unnamed street; thence easterly to the east corporation line connecting with an unnamed street.

Beginning again on the east corporation line of the City of Agency connecting with an unnamed street; thence easterly following substantially the center section line of Section 36-T72N-R13W and Sections 31, 32, 33 (junction Iowa 16), 34, and 35-T72N-R12W to a point near the W  $\frac{1}{4}$  Corner of Section 36-T72N-R12W; thence in a northeasterly direction through Section 36-T72N-R12W to the Wapello-Jefferson County line at a point approximately 1000 feet north of the E  $\frac{1}{4}$  Corner of Section 36-T72N-R12W Wapello County (W  $\frac{1}{4}$  Corner of Section 31-T72N-R11W Jefferson County).

REVISED: 5-13-87

**OFFICIAL DESCRIPTION CHANGE**

**COUNTY:** Wapello

**ROUTE:** US 34

**APPROVAL DATE:** 9-14-66

Beginning on the Wapello-Monroe County line at a point a short distance north of the SW Corner of Section 19-T72N-R15W Wapello County (SE Corner of Section 24-T72N-R16W Monroe County); thence easterly and southeasterly through the south part of Sections 19 and 20-T72N-R15W to a point near the SE Corner of Section 20-T72N-R15W; thence southeasterly through Sections 28 and 27-T72N-R15W to a point near the center of Section 27-T72N-R15W; thence east following the quarter section line to a point near the center of Section 26-T72N-R15W; thence curving east-southeasterly through the SE  $\frac{1}{4}$  of Section 26-T72N-R15W and east-northeasterly through the SW  $\frac{1}{4}$  of Section 25-T72N-R15W to a point near the center of Section 25-T72N-R15W; thence east following substantially the quarter section line to a point near the W  $\frac{1}{4}$  Corner of Section 28-T72N-R14W; thence northeasterly and easterly through Sections 28, 27, 22, and 23-T72N-R14W to the west corporation line of the City of Ottumwa connecting with an unnamed street.

Beginning again on the east corporation line of the City of Ottumwa connecting with an unnamed street; thence easterly and northeasterly through Sections 31 and 32-T72N-R13W to the south corporation line of the City of Ottumwa connecting with an unnamed street.

Beginning again on the east corporation line of the City of Ottumwa connecting with Roemer Avenue; thence easterly, southeasterly and

easterly through Sections 29, 28, 27, 34, and 35-T72N-R13W to the west corporation line of the Town of Agency connecting with Main Street.

Beginning again on the east corporation line of the Town of Agency connecting with Main Street; thence east following substantially the section line to a point hear the W ¼ Corner of Section 36-T72N-R12W; thence in a northeasterly direction through Section 36-T72N-R12W to the Wapello-Jefferson County line at a point approximately 1000 feet north of the E ¼ Corner of Section 36-T72N-R12W Wapello County (W ¼ Corner of Section 31-T72N-R11W Jefferson County).

#### **OFFICIAL DESCRIPTION CHANGE**

**COUNTY:** Wapello

**CITY OF:** Ottumwa

**ROUTE:** US 34

**APPROVAL DATE:** 9-14-66

Commencing on an unnamed street at the west corporation line; thence easterly, southeasterly and easterly on said unnamed street to the east corporation line.

Commencing again on an unnamed street at the south corporation line; thence northerly on said unnamed street to Roemer Avenue at a point approximately 602 feet east of the centerline of Walnut Avenue; thence easterly on Roemer Avenue to the east corporation line.

#### **OFFICIAL DESCRIPTION CHANGE**

**COUNTY:** Wapello

**CITY OF:** Agency

**ROUTE:** US 34

**APPROVAL DATE:** 11-30-55

Beginning on Main Street at the west corporation line; thence easterly on Main Street to the east corporation line.