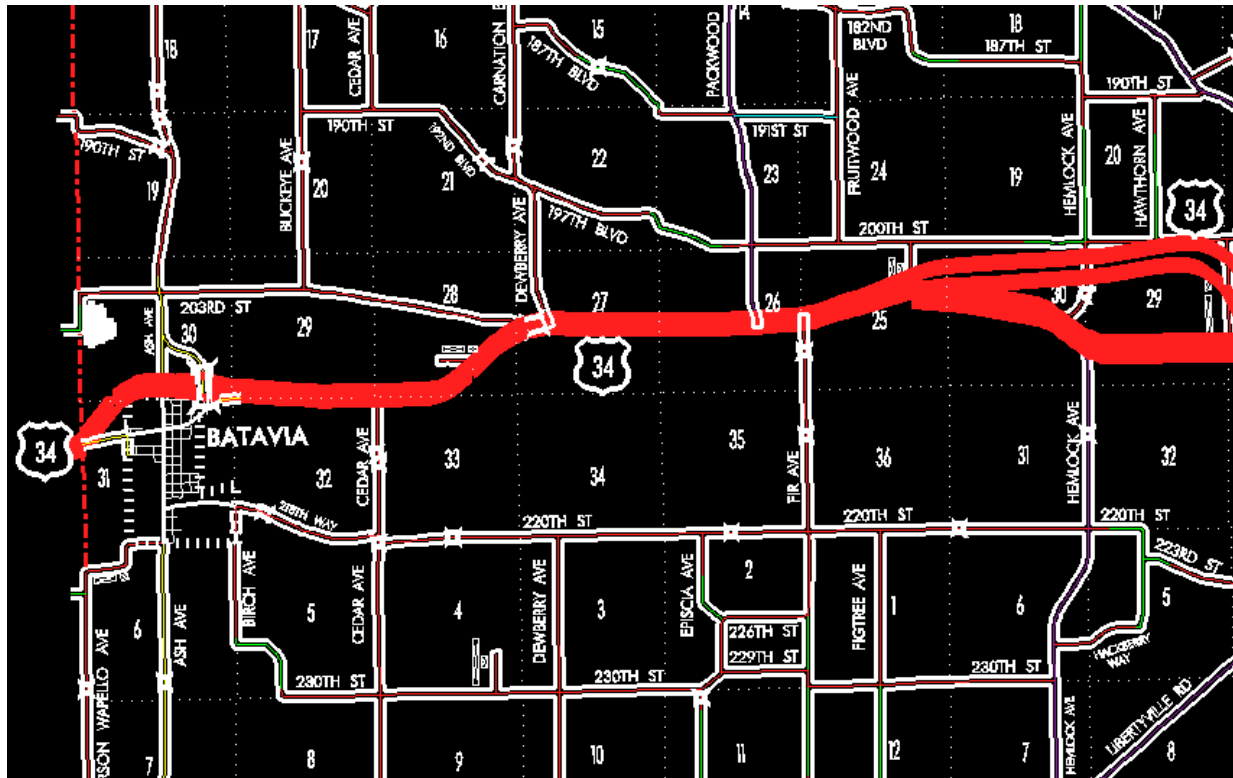


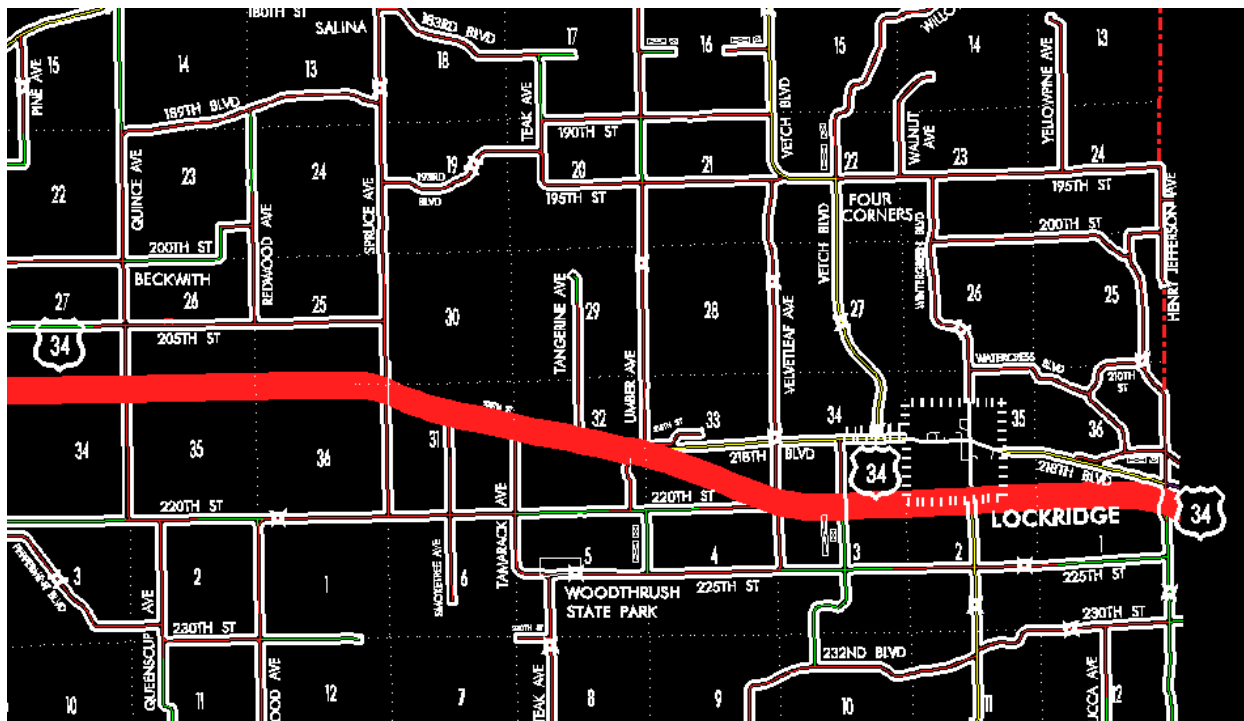
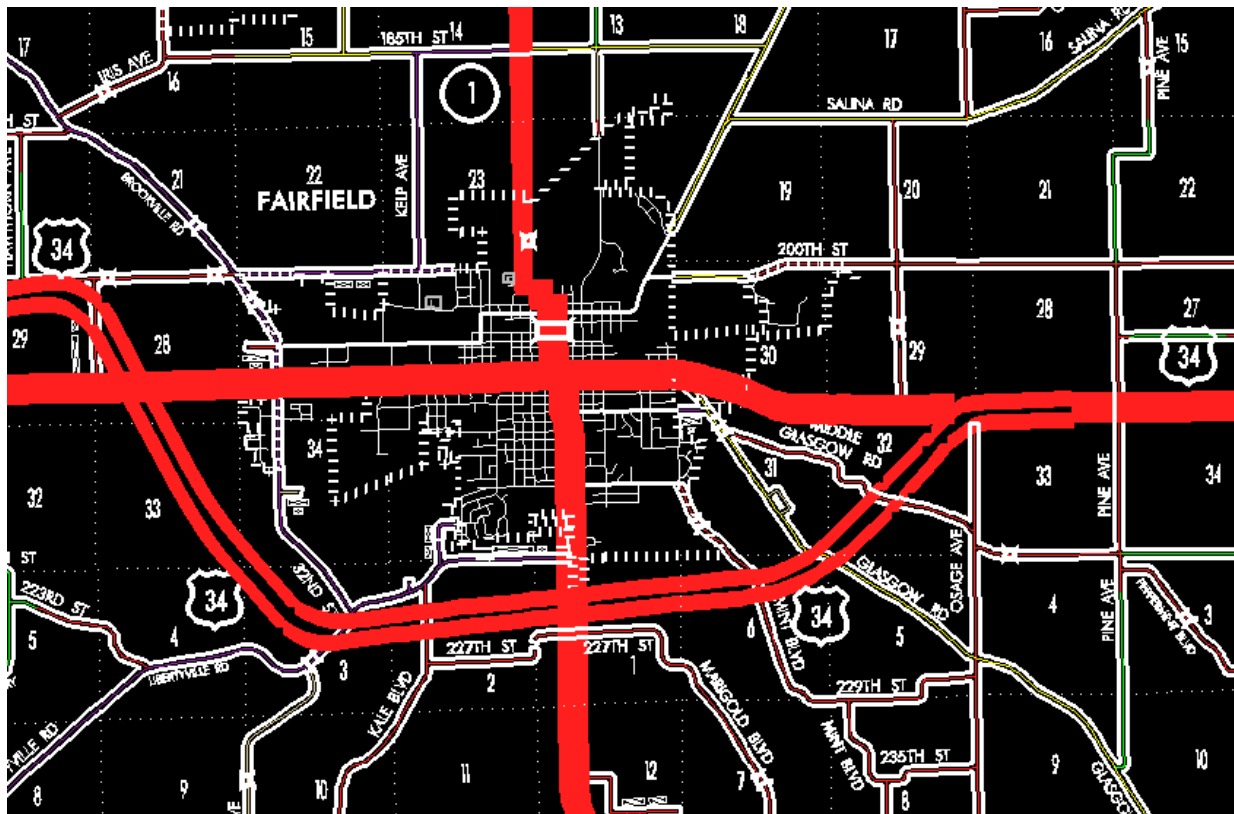
**OFFICIAL DESCRIPTION CHANGE****OFFICE:** Transportation Data**EFFECTIVE DATE:** 11-12-2008**ENTERED BY:** Darlene Bovee**ENTERED DATE:** 12-08-2008

New description – US 34 and its extensions in Jefferson County described as follows:

Beginning on the Jefferson–Wapello County line at a point 1000 feet north of the W  $\frac{1}{4}$  Corner of Section 31–T72N–R11W, Jefferson County (E  $\frac{1}{4}$  Corner of Section 36–T72N–R12W, Wapello County); thence in a northeasterly, easterly, and southeasterly direction through Sections 31, 30, and 29–T72N–R11W to a point near the N  $\frac{1}{4}$  Corner Section 32–T72N–R11W; thence easterly following substantially the north section line of Sections 32 and 33–T72N–R11W to a point approximately 900 feet west of the N  $\frac{1}{4}$  Corner of Section 33–T72N–R11W; thence in a northeasterly and easterly direction through Sections 28, 27, 26, and 25–T72N–R11W and Sections 30 and 29–T72N–R10W to point approximately 460 feet south and 1940 feet west of the NE Corner of Section 29–T72N–R10W; thence in a southeasterly direction through Sections 29, 28, 33–T72N–R10W, Section 4–T71N–R10W and Section 3–T71N–R10W to a point near the center of Section 3–T71N–R10W; thence in a northeasterly direction through Sections 3, 2 and 1–T71N–R10W, Section 6–T71N–R9W, and Sections 31 and 32–T72N–R9W to a point near the NE Corner Section 32–T72N–R9W; then in an easterly direction following substantially the north section line of Sections 33, 34, 35 and 36–T72N–R9W to a point approximately 1816 feet west of the NE Corner of said Section 36–T72N–R9W; thence in a southeasterly direction through Section 36–T72N–R9W and Sections 31, 32, 33, and 34–T72N–R8W to a point approximately 1100 feet east of the SW Corner of Section 34–T72N–R8W; thence easterly following substantially the Section line of Sections 3, 2, and 1–T71N–R8W to a point approximately 1320 feet west of the NE Corner of Section 1–T71N–R8W; thence in a southeasterly direction through Section 1–T71N–R8W to the Jefferson–Henry County line at a point approximately 500 feet south of the NE Corner Section 1–T71N–R8W, Jefferson

County (NW Corner Section 6-T71N-R7W, Henry County).





**OFFICIAL DESCRIPTION CHANGE**

**OFFICE:** Transportation Data

**EFFECTIVE DATE:** 8-23-2005

**ENTERED BY:** Stefani Wonders

**ENTERED DATE:** 09-07-2006

New description – US 34 and its extensions in Jefferson County described as follows:

Beginning on the Jefferson-Wapello County line at a point 1000 feet north of the W  $\frac{1}{4}$  Corner of Section 31-T72N-R11W, Jefferson County (E  $\frac{1}{4}$  Corner of Section 36-T72N-R12W, Wapello County); thence in a northeasterly, easterly, and southeasterly direction through Sections 31, 30, and 29-T72N-R11W to a point near the N  $\frac{1}{4}$  Corner Section 32-T72N-R11W; thence easterly following substantially the north section line of Sections 32, and 33-T72N-R11W to a point approximately 900 feet west of the N  $\frac{1}{4}$  Corner of Section 33-T72N-R11W; thence in a northeasterly and easterly direction through Sections 28, 27, 26, and 25-T72N-R11W and in a southeasterly and easterly direction through Sections 30, 29, 28, and 27-T72N-R10W to the west corporation line of Fairfield connecting with Burlington Avenue (approximately 1370 feet north and 848 feet east of the SW Corner of said Section 27).

Fairfield:

Beginning on the west corporation line connecting with Burlington Avenue; thence east on Burlington Avenue to the east corporation line (approximately 1370 feet north and 1046 feet east of the SW Corner Section 27-T72N-R10W).

Beginning again on the east corporation line of Fairfield connecting with Burlington Avenue; thence east following substantially the south  $\frac{1}{4}$  section line of Section 27-T72N-R10W to the west corporation line of Fairfield connecting

with Burlington Avenue (approximately 1370 feet north and 1851 feet east of the SW Corner Section 27-T72N-R10W).

Fairfield:

Beginning on the west corporation line connecting with Burlington Avenue; thence east on Burlington Avenue to the east corporation line (approximately 1370 feet north and 2112 feet east of the SW Corner Section 27-T72N-R10W).

Beginning again on the east corporation line of Fairfield connecting with Burlington Avenue; thence east following substantially the south  $\frac{1}{4}$  section line of Section 27-T72N-R10W to the west corporation line of Fairfield connecting with Burlington Avenue (approximately 1370 feet north and 3104 feet east of the SW Corner Section 27-T72N-R10W).

Fairfield:

Beginning on the west corporation line connecting with Burlington Avenue; thence east on Burlington Avenue to the east corporation line (approximately 1370 feet north and 3568 feet east of the SW Corner Section 27-T72N-R10W).

Beginning again on the east corporation line of Fairfield connecting with Burlington Avenue; thence easterly following substantially the south  $\frac{1}{4}$  section line of Section 27-T72N-R10W to the west corporation line of Fairfield connecting with Burlington Avenue (approximately 1370 feet north and 5289 feet east of the SW Corner Section 27-T72N-R10W).

Fairfield:

Beginning on the west corporation line connecting with Burlington Avenue; thence east on Burlington Avenue to the east corporation line (approximately 1370 feet north and 5447 feet east of the SW Corner Section 27-T72N-R10W).

Beginning again on the east corporation line of Fairfield connecting with Burlington Avenue; thence easterly following substantially the south  $\frac{1}{4}$  section line of Section 26-T72N-R10W to the west corporation line of Fairfield connecting with Burlington Avenue (approximately 1370 feet north and 6149 feet east of the SW Corner Section 27-T72N-R10W).

Fairfield:

Beginning on the west corporation line connecting with Burlington Avenue; thence east on Burlington Avenue to the east corporation line (approximately 1370 feet north and 6408 feet east of the SW Corner Section 27-T72N-R10W).

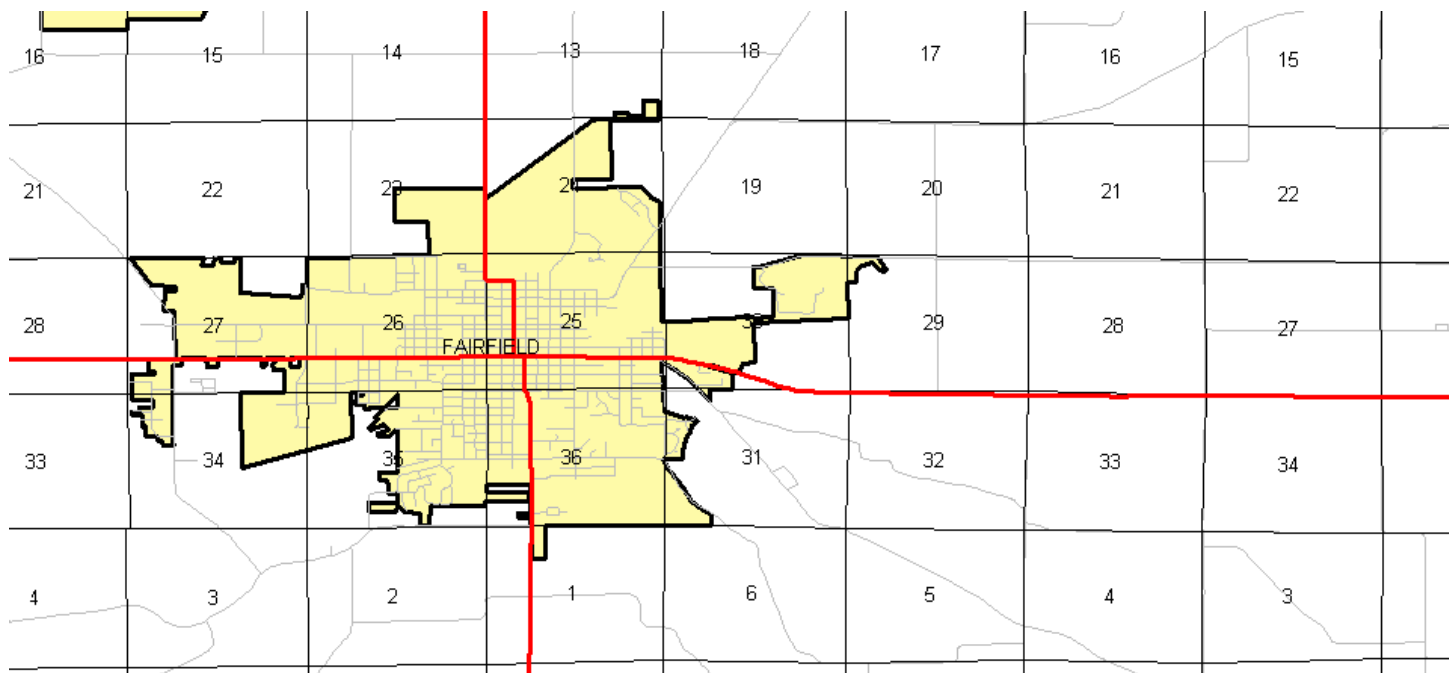
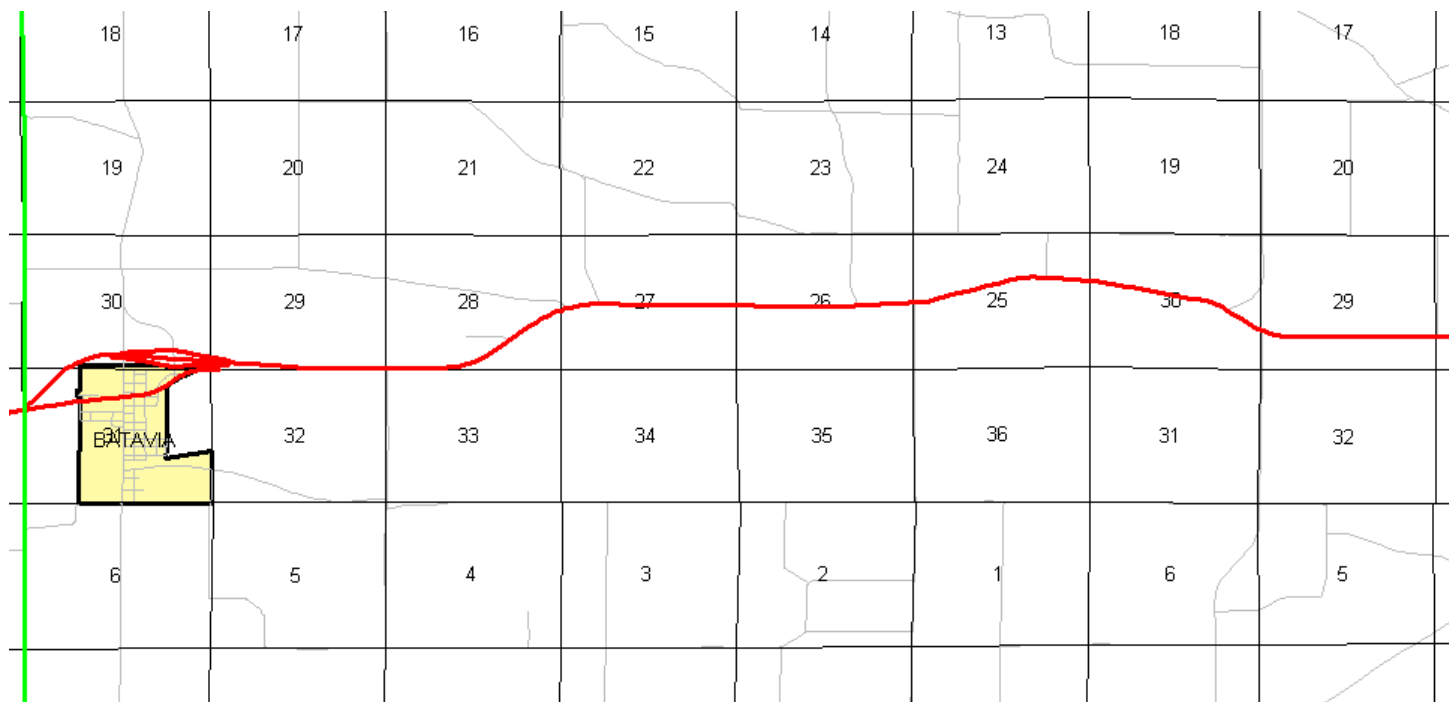
Beginning again on the east corporation line of Fairfield connecting with Burlington Avenue; thence east through the south part of Section 26-T72N-R10W to the west corporation line of Fairfield connecting with

Burlington Avenue (approximately 1370 feet north and 6763 feet east of the SW Corner Section 27-T72N-R10W).

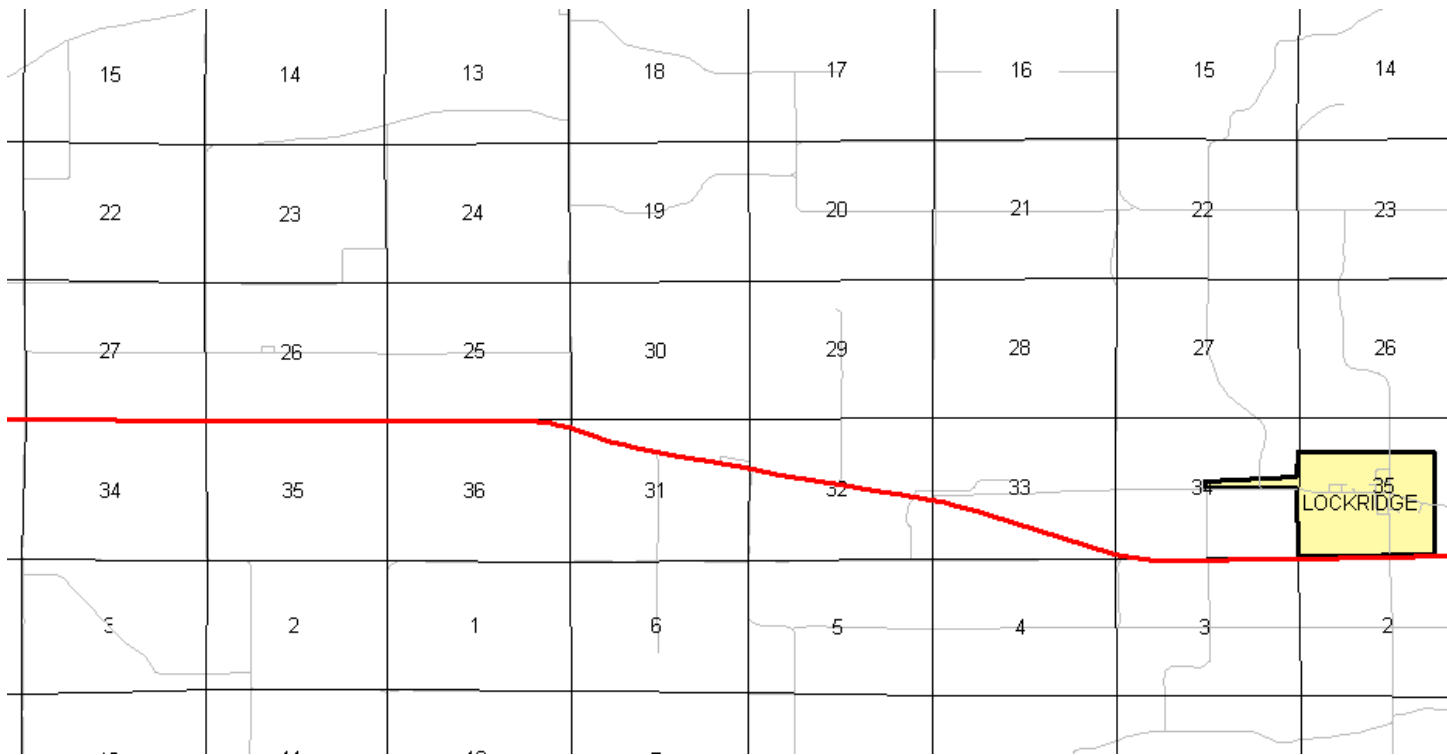
Fairfield:

Beginning on the west corporation line connecting with Burlington Avenue; thence in an easterly and southeasterly direction on Burlington Avenue to the east corporation line (approximately 1703 feet east and 906 feet north of the SW Corner Section 30-T72N-R9W).

Beginning again on the east corporation line of Fairfield connecting with Burlington Avenue; thence in a southeasterly direction through Section 30-T72N-R9W to a point approximately 2000 feet west of the SE Corner of Section 30-T72N-R9W; thence easterly following substantially the north section line of Sections 31, 32, 33, 34, 35, and 36-T72N-R9W to a point approximately 1816 feet west of the NE Corner of said Section 36; thence in a southeasterly direction through Section 36-T72N-R9W and Sections 31, 32, 33, and 34-T72N-R8W to a point approximately 1100 feet east of the SW Corner of Section 34-T72N-R8W; thence easterly following substantially the Section line of Sections 3, 2, and 1-T71N-R8W to a point approximately ¼ mile west of the NE Corner of Section 1-T71N-R8W; thence in a southeasterly direction through Section 1-T71N-R8W to the Jefferson-Henry County line at a point approximately 500 feet south of the NE Corner Section 1-T71N-R8W, Jefferson County (NW Corner Section 6-T71N-R7W, Henry County).







## OFFICIAL DESCRIPTION CHANGE

**COUNTY:** Jefferson

**ROUTE:** US 34

**STAFF ACTION NUMBER:** S-87-1541

**APPROVAL DATE:** 5-13-87

New description – US 34 and its extensions in Jefferson County described as follows:

Beginning on the Jefferson–Wapello County line at a point 1000 feet north of the W  $\frac{1}{4}$  Corner of Section 31–T72N–R11W, Jefferson County (E  $\frac{1}{4}$  Corner of Section 36–T72N–R12W, Wapello County); thence in a northeasterly direction through Section 31–T72N–R11W to the west corporation line of Batavia connecting with an unnamed street.

Batavia:

Beginning on the west corporation line connecting with an unnamed street; thence in an easterly and northeasterly direction to the east corporation line connecting with an unnamed street.

Beginning again on the east corporation line of Batavia connecting with an unnamed street; thence curving in a northeasterly direction through Section 31-T72N-R11W to a point approximately 700 feet west of the NE Corner of Section 31-T72N-R11W; thence east following substantially the section line of Sections 31, 32, and 33-T72N-R11W to a point approximately 900 feet west of the N  $\frac{1}{4}$  Corner of Section 33-T72N-R11W; thence in a northeasterly and easterly direction through the south part of Sections 28, 27, 26, and 25-T72N-R11W and in a southeasterly and easterly direction through the south part of Sections 30, 29, 28, and 27-T72N-R10W to the west corporation line of Fairfield connecting with Burlington Avenue.

Fairfield:

Beginning on the west corporation line connecting with Burlington Avenue; thence east on Burlington Avenue to the east corporation line.

Beginning again on the east corporation line of Fairfield connecting with Burlington Avenue; thence east following substantially the south  $\frac{1}{4}$  section line of Section 27-T72N-R10W to the west corporation line of Fairfield connecting with Burlington Avenue.

Fairfield:

Beginning on the west corporation line connecting with Burlington Avenue; thence east on Burlington Avenue to the east corporation line.

Beginning again on the east corporation line of Fairfield connecting with Burlington Avenue; thence east following substantially the south  $\frac{1}{4}$  section line

of Section 27-T72N-R10W to the west corporation line of Fairfield connecting with Burlington Avenue.

Fairfield:

Beginning on the west corporation line connecting with Burlington Avenue; thence east on Burlington Avenue to the east corporation line.

Beginning again on the east corporation line of Fairfield connecting with Burlington Avenue; thence easterly following substantially the south  $\frac{1}{4}$  section line of Section 27-T72N-R10W to the west corporation line of Fairfield connecting with Burlington Avenue.

Fairfield:

Beginning on the west corporation line connecting with Burlington Avenue; thence east on Burlington Avenue to the east corporation line.

Beginning again on the east corporation line of Fairfield connecting with Burlington Avenue; thence easterly following substantially the south  $\frac{1}{4}$  section line of Section 26-T72N-R10W to the west corporation line of Fairfield connecting with Burlington Avenue.

Fairfield:

Beginning on the west corporation line connecting with Burlington Avenue; thence east on Burlington Avenue to the east corporation line.

Beginning again on the east corporation line of Fairfield connecting with Burlington Avenue; thence east through the south part of Section 26-T72N-R10W to the west corporation line of Fairfield connecting with Burlington Avenue.

Fairfield:

Beginning on the west corporation line connecting with Burlington Avenue; thence in an easterly and southeasterly direction on Burlington Avenue to the east corporation line.

Beginning again on the east corporation line of Fairfield connecting with Burlington Avenue; thence in a southeasterly direction through Section 30-T72N-R9W to a point approximately 1000 feet west of the SE Corner of Section 30-T72N-R9W; thence easterly following substantially the section line of Sections 31, 32, 33, 34, 35, and 36-T72N-R9W; thence in a southeasterly direction through Section 36-T72N-R9W and Sections 31, 32, 33, and 34-T72N-R8W to a point approximately 1100 feet east of the SW Corner of Section 34-T72N-R8W; thence easterly following substantially the Section line of Sections 3, 2, and 1-T71N-R8W to a point approximately ¼ mile west of the NE Corner of Section 1-T71N-R8W; thence in a southeasterly direction through Section 1-T71N-R8W to the Jefferson-Henry County line at a point approximately 500 feet south of the NE Corner Section 1-T71N-R8W, Jefferson County (NW Corner Section 6-T71N-R7W, Henry County).

**COMMISSION ORDER**

**DIVISION:** Planning & Research

**COMMISSION ORDER NUMBER:** PR-79-272

**SUBMITTED BY:** C.I. MacGillivray

**MEETING DATE:** 11-2-78

**DISCUSSION/BACKGROUND:**

Due to a review of our Primary Road System records, US 34 in Jefferson County should be deleted from the Primary Road System and the new description added should be officially included into the Primary Road System.

US 34 begins on the Jefferson–Wapello County line approximately  $\frac{1}{4}$  mile west of Batavia, Iowa and travels easterly via Batavia and Fairfield to the Jefferson–Henry County line approximately  $1\frac{1}{2}$  miles east of Lockridge, Iowa.

#### **PROPOSAL/ACTION RECOMMENDATION:**

Locate US 34 and its extensions in Jefferson County as follows:

Beginning on the Jefferson–Wapello County line at a point 1000 feet north of the W  $\frac{1}{4}$  Corner of Section 31–T72N–R11W, Jefferson County (E  $\frac{1}{4}$  Corner of Section 36–T72N–R12W, Wapello County); thence in a northeasterly direction through Section 31–T72N–R11W to the west corporation line of the City of Batavia connecting with an unnamed street.

Batavia:

Beginning on the west corporation line connecting with an unnamed street; thence in an easterly and northeasterly direction to the east corporation line connecting with an unnamed street.

Beginning again on the east corporation line of the City of Batavia, connecting with an unnamed street; thence curving in a northeasterly direction through Section 31–T72N–R11W to a point approximately 700 feet west of the NE Corner of Section 31–T72N–R11W; thence east following substantially the section line of Sections 31, 32 and 33–T72N–R11W to a point approximately 900 feet west of the N  $\frac{1}{4}$  Corner of Section 33–T72N–R11W; thence in a northeasterly and easterly direction through the south part of Sections 28, 27, 26 and 25T72N–R11W and in a southeasterly and easterly direction through the

south part of Sections 30, 29, 28 and 27–T72N–R10W to the west corporation line of the City of Fairfield connecting with an unnamed street.

Fairfield:

Beginning on the west corporation line connecting with an unnamed street; thence easterly to the east corporation line, connecting with an unnamed street.

Beginning again on the east corporation line of the City of Fairfield connecting with an unnamed street; thence easterly following substantially the south  $\frac{1}{4}$  section line of Section 27-T72N-R10W to the west corporation line of the City of Fairfield connecting with an unnamed street.

Fairfield:

Beginning on the west corporation line connecting with an unnamed street; thence easterly to the east corporation line, connecting with an unnamed street.

Beginning again on the east corporation line of the City of Fairfield connecting with an unnamed street; thence easterly following substantially the south  $\frac{1}{4}$  section line of Section 27-T72N-R10W to the west corporation line of the City of Fairfield connecting with an unnamed street.

Fairfield:

Beginning on the west corporation line connecting with an unnamed street; thence easterly to the east corporation line, connecting with an unnamed street.

Beginning again on the east corporation line of the City of Fairfield connecting with an unnamed street; thence easterly following substantially the south  $\frac{1}{4}$  section line of Section 27-T72N-R10W to the west corporation line of the City of Fairfield connecting with an unnamed street.

Fairfield:

Beginning on the west corporation line connecting with an unnamed street; thence easterly to the east corporation line, connecting with an unnamed street.

Beginning again on the east corporation line of the City of Fairfield connecting with an unnamed street; thence easterly following substantially the south  $\frac{1}{4}$  section line of Section 26-T72N-R10W to the west corporation line of the City of Fairfield connecting with an unnamed street.

Fairfield:

Beginning on the west corporation line connecting with an unnamed street; thence easterly to the east corporation line, connecting with an unnamed street.

Beginning again on the east corporation line of the City of Fairfield connecting with an unnamed street; thence easterly through the south part of Section 26--T72N-R10W to the west corporation line of the City of Fairfield connecting with an unnamed street.



Fairfield:

Beginning on the west corporation line, connecting with an unnamed street; thence in an easterly and southeasterly direction to the east corporation line connecting with an unnamed street.

Beginning again on the east corporation line of the City of Fairfield, connecting with an unnamed street; thence in a southeasterly direction through Section 30-T72N-R9W to a point approximately 1000 feet west of the SE Corner of Section 30-T72N-R9W thence easterly following substantially the section line of Sections 31, 32, 33, 34, 35 and 36-T72N-R9W; thence in a southeasterly direction through Section 36-T72N-R9W and Sections 31, 32, 33 and 34-T72N-R8W, to a point approximately 1100 feet east of the SW Corner of Section 34-T72N-R8W; thence easterly following substantially the Section line of Sections 3, 2 and 1-T71N-R8W to a point approximately ¼ mile west of the NE Corner of Section 1-T71N-R8W; thence in a southeasterly direction through Section 1-T71N-R8W to the Jefferson-Henry County line at a point approximately 500 feet south of the NE Corner Section 1-T71N-R8W, Jefferson County (NW Corner Section 6-T71N-R7W, Henry County).

NOW, THEREFORE: Be it resolved that the Iowa Department of Transportation approve the location of US 34 in Jefferson County, Iowa.

NOTE: To become effective upon the adoption of this resolution.

REVISED: 5-13-87

## **OFFICIAL DESCRIPTION CHANGE**

**COUNTY:** Jefferson

**ROUTE:** US 34

**APPROVAL DATE:** 5-27-58

Beginning on the Jefferson-Wapello County line at a point approximately 1000 feet north of the W  $\frac{1}{4}$  Corner of Section 31-T72N-R11W, Jefferson County (E  $\frac{1}{4}$  Corner of Section 36-T72N-R12W, Wapello County); thence in a northeasterly direction through Section 31-T72N-R11W, to the west corporation line of the Town of Batavia connecting with the extension of Davis Street.

Beginning again on the east corporation line of the Town of Batavia connecting with an unnamed street; thence curving in a northeasterly direction to a point approximately 700 feet west of the NE Corner of Section 31-T72N-R11W; thence east following substantially the section line to a point approximately 600 feet west of the N  $\frac{1}{4}$  Corner of Section 33-T72N-R11W; thence in a northeasterly and easterly direction through Sections 28, 27, 26, and 25-T72N-R11W, and in a southeasterly and easterly direction through Sections 30, 29, 28, 27, and 26-T72N-R10W to the west corporation line of the City of Fairfield connecting with Burlington Street.

Beginning again on the east corporation line of the City of Fairfield connecting with Burlington Street thence in a southeasterly direction to a point approximately  $\frac{1}{4}$  mile west of the NE Corner of Section 31-T72N-R9W; thence east following substantially the section line to a point approximately  $\frac{1}{4}$  mile west of the NE Corner of Section 36-T72N-R9W; thence in a southeasterly direction along the south side of the Chicago, Burlington-Quincy Railroad and substantially parallel thereto through Section 36-T72N-R9W and Sections 31 and 32-T72N-R8W to a point near the center of Section 32-T72N-R8W; thence in a southeasterly direction thru Sections 32, 33, and 34-T72N-R8W to a point

approximately ¼ mile east of the SW Corner Section 34-T72N-R8W; thence east following substantially the section line to a point approximately ¼ mile west of the SE Corner Section 36-T72N-R8W; thence curving in a southeasterly direction to the Jefferson-Henry County line at a point approximately 350 feet south of the NE Corner Section 1-T71N-R8W Jefferson County (NW Corner Section 6-T71N-R7W Henry County)

NOTE: Designation to become effective upon the completion and opening to traffic of Relocated US 34, more specifically Henry-Jefferson County Project FN-3.

REVISED: 11-2-78

**OFFICIAL DESCRIPTION CHANGE**

**COUNTY:** Jefferson

**CITY OF:** Batavia

**ROUTE:** US 34

**APPROVAL DATE:** 2-16-38

Commencing on the extension of Davis Street at the west corporation line; thence easterly on the extension of Davis Street and on Davis Street to a point near the intersection of Main Street and Third Street; thence northeasterly on unnamed Street to the east corporation line near the intersection of Meridian Street and Locust Grove Street.

**REVISED:** 5-27-58

**OFFICIAL DESCRIPTION CHANGE**

**COUNTY:** Jefferson

**APPROVAL DATE:** 11-9-38

**CONNECTING CURVES**

**Junction of US 34 and Iowa 303:**

Beginning at a point approximately 1200 feet north of the SW Corner of Section 29-T72N-R10W; thence curving in a northwesterly direction to a point approximately 1500 feet north and 200 feet west of the SW Corner of Section 29-T72N-R10W.

See also rural Iowa 78 to combine two descriptions.

REMOVED

**OFFICIAL DESCRIPTION CHANGE**

**COUNTY:** Jefferson

**CITY OF:** Fairfield

**ROUTE:** US 34

**APPROVAL DATE:** 2-5-36

Commencing on Burlington Street at the west corporation line; thence easterly on Burlington Street to the east corporation line.

**OFFICIAL DESCRIPTION CHANGE**

**COUNTY:** Jefferson

**CITY OF:** Lockridge

**ROUTE:** US 34

**APPROVAL DATE:** 2-5-36

Commencing on Main Street at the west corporation line; thence easterly on Main Street and southeasterly on the extension of Main Street to the east corporation line.

**REVISED:** 5-27-58