

OFFICIAL DESCRIPTION CHANGE

OFFICE: Transportation Data

EFFECTIVE DATE: 9-23-2003

ENTERED BY: Stefani Wonders

ENTERED DATE: 02-11-2005

DISCUSSION/BACKGROUND:

Due the bypass, transfer of jurisdiction agreement numbers 2003-TJ-047 and 2003-TJ-051, between Henry County, Mount Pleasant, and the Iowa Department of Transportation, transferred Old US 34 to county and city jurisdictions on September 23, 2003.

The new description reflects the US 34 bypass around Mount Pleasant.

PROPOSAL/ACTION RECOMMENDATION:

Beginning on the Henry-Jefferson County line at a point approximately 300 feet south of the NW Corner Section 6-T71N-R7W, Henry County (NE Corner Section 1-T71N-R8W, Jefferson County); thence in a southeasterly direction through Sections 6 and 5-T71N-R7W to a point approximately 650 feet north and 1,300 feet west of the SE Corner Section 5-T71N-R7W; thence in an easterly and southeasterly direction through Sections 5, 4, 9, 10, and 11-T71N-R7W to approximately 2800 feet east and 2145 feet south of the NW Corner said Section 11; thence northeasterly and easterly through Sections 11, 2, and 1-T71N-R7W and Sections 6 and 5-T71N-R6W to approximately N $\frac{1}{4}$ Corner said Section 5; thence easterly following substantially the north section line of Sections 5, 4, and 3-T71N-R6W approximately 2115 feet east of the NW Corner of said Section 3; thence northeasterly through Section 34-T72N-R6W to the junction of US 218; thence southeasterly and southerly on US 218 through Section 34-T72N-R6W and Sections 2 and 11-T71N-R6W to the north corporation line of Mount Pleasant (approximately 2658 feet south of the N $\frac{1}{4}$ Corner of said Section 11) connecting with an unnamed street.

Mount Pleasant:

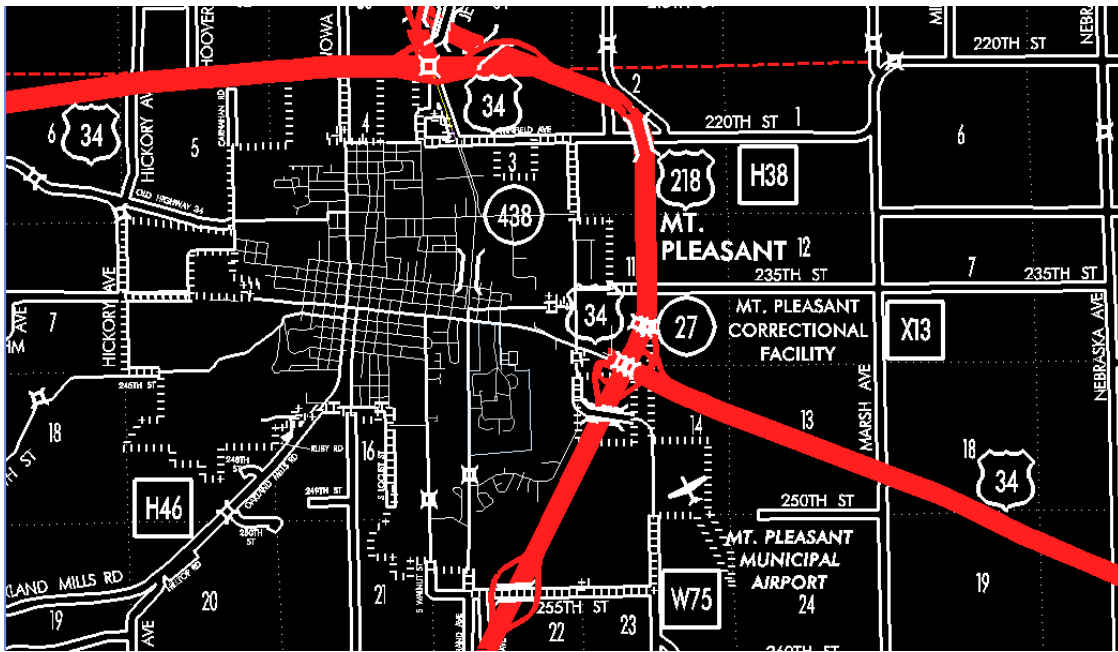
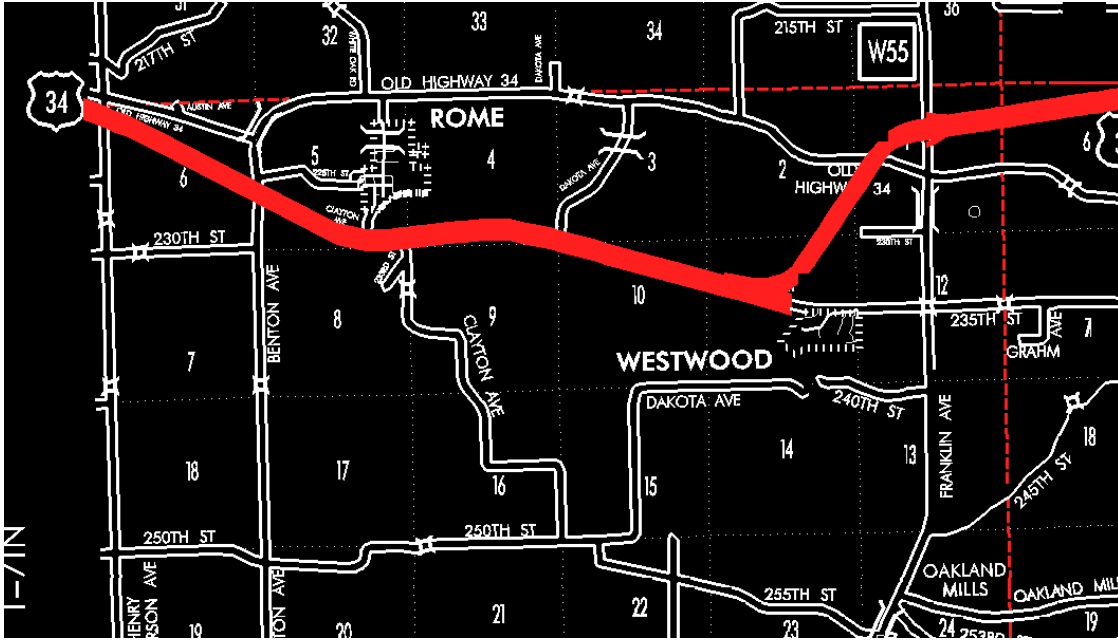
Beginning on an unnamed street at the north corporation line; thence southerly and southwesterly to the junction of US 218/Washington Street (approximately 1235 feet west of the S $\frac{1}{4}$ Corner of Section 11-T71N-R6W); thence southeasterly on Washington Street to the east corporation line (approximately 515 feet south of the N $\frac{1}{4}$ Corner Section 14-T71N-R6W).

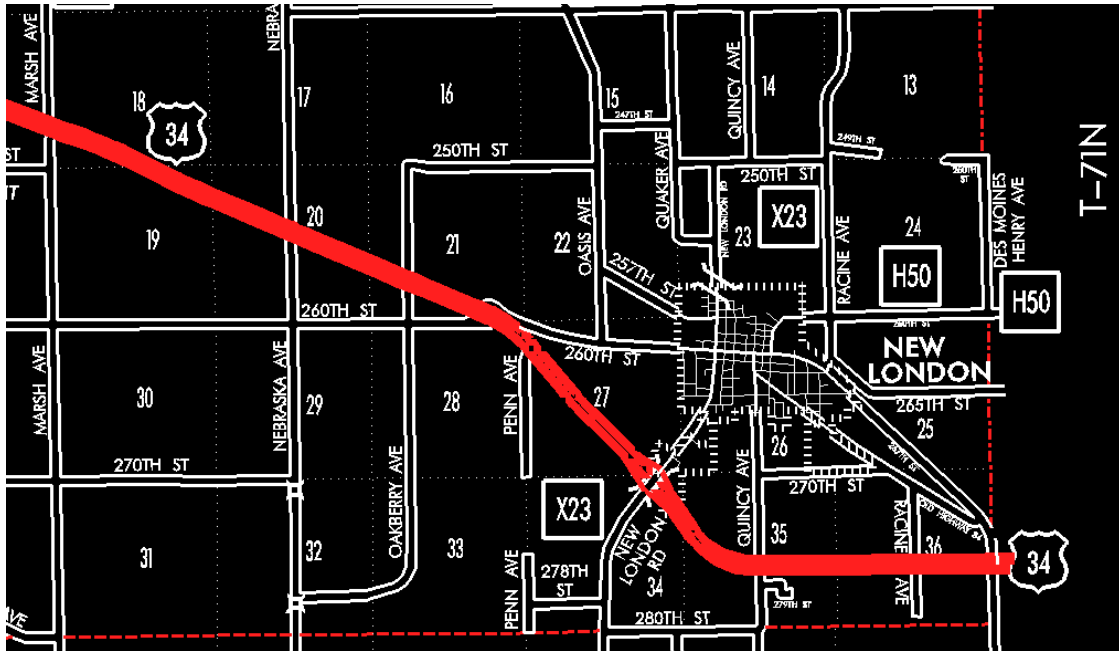
Beginning again on the east corporation line of Mount Pleasant connecting with Washington Street; thence in a southeasterly direction through Sections 14 and 13-T71N-R6W and Section 18, 19, 20, 21, 28, 27, and 34-T71N-R5W to the west corporation line of New London (approximately 670 feet west of the NW Corner Section 35-T71N-R5W and 600 feet south), connecting with an unnamed street.

New London:

Beginning on the west corporation line (approximately 670 feet west of the NW Corner Section 35-T71N-R5W and 600 feet south), connecting with an unnamed street; thence southeast on said unnamed street to the east corporation line (approximately 1570 feet south of the NW Corner Section 35-T71N-R5W).

Beginning on the east corporation line of New London (approximately 1570 feet south of the NW Corner Section 35-T71N-R5W), connecting with an unnamed street; thence southeast through Section 35-T71N-R5W to point just south of the Center Section 35-T71N-R5W; thence following substantially just south of the Center Sections 35 and 36-T71N-R5W to the Henry-Des Moines County line at approximately 3200 feet south of the NE Corner Section 36-T71N-R5W, Henry County (NW Corner Section 31-T71N-R4W, Des Moines County).





STAFF ACTION

OFFICE: Transportation Inventory

STAFF ACTION NUMBER: S-01-1235

SUBMITTED BY: Patrick R. Cain

SUBMITTAL DATE: 06-28-2001

DISCUSSION/BACKGROUND:

New Description – US 34 and its extensions in Henry County described as follows:

Beginning on the Henry-Jefferson County line at a point approximately 300 feet south of the NW Corner Section 6-T71N-R7W, Henry County (NE Corner Section 1-T71N-R8W, Jefferson County); thence in a southeasterly direction through Sections 6 and 5-T71N-R7W to a point approximately 650 feet north and 1,300 feet west of the SE Corner Section 5-T71N-R7W; thence in an easterly and southeasterly direction through Sections 5, 4, 9, 10, and 11-T71N-R7W; thence easterly through Section 12-

T71N-R7W and Section 7-T71N-R6W to a point near the W ¼ Corner Section 8-T71N-R6W; thence in an easterly through Section 8-T71N-R6W to the west corporation line of Mount Pleasant connecting with Washington Street.

Mount Pleasant:

Beginning on Washington Street at the west corporation line; thence east on Washington Street to the east corporation line.

Beginning again on the east corporation line of Mount Pleasant connecting with Washington Street; thence in a southeasterly direction through Sections 14 and 13-T71N-R6W and Section 18, 19, 20, 21, 28, 27, and 34-T71N-R5W to the west corporation line of New London (approximately 670 feet west of the NW Corner Section 35-T71N-R5W and 600 feet south), connecting with an unnamed street.

New London:

Beginning on the west corporation line (approximately 670 feet west of the NW Corner Section 35-T71N-R5W and 600 feet south), connecting with an unnamed street; thence southeast on said unnamed street to the east corporation line (approximately 1570 feet south of the NW Corner Section 35-T71N-R5W).

Beginning on the east corporation line of New London (approximately 1570 feet south of the NW Corner Section 35-T71N-R5W), connecting with an unnamed street; thence southeast through Section 35-T71N-R5W to point just south of the Center Section 35-T71N-R5W; thence following substantially just south of the Center Sections 35 and 36-T71N-R5W to the Henry-Des Moines County line at approximately 3200 feet south of the NE Corner Section 36-T71N-R5W, Henry County (NW Corner Section 31-T71N-R4W, Des Moines County).

PROPOSAL/ACTION RECOMMENDATION:

It is recommended that the old description of US 34 and its extensions in Henry County be deleted and the new description be included in the Primary Road System.

OFFICIAL DESCRIPTION CHANGE

COUNTY: Henry

ROUTE: US 34

COMMISSION ORDER NUMBER: S-87-730

APPROVAL DATE: 12-18-86

US 34 and its extensions in Henry County described as follows:

Beginning on the Henry-Jefferson County line at a point approximately 300 feet south of the NW Corner Section 6-T71N-R7W, Henry County (NE Corner Section 1-T71N-R8W, Jefferson County); thence in a southeasterly direction through Sections 6 and 5-T71N-R7W to a point approximately 650 feet north and 1,300 feet west of the SE Corner Section 5-T71N-R7W; thence in an easterly and southeasterly direction through Sections 5, 4 and 9-T71N-R7W to a point near the NW Corner Section 10-T71N-R7W; thence southeasterly through Sections 10 and 11--T71N-R7W and easterly through Section 12-T71N-R7W and Section 7-T71N-R6W to a point near the W ¼ Corner Section 8-T71N-R6W; thence in an easterly direction through Section 8-T71N-R6W to the west corporation line of Mount Pleasant connecting with Washington Street.

Mount Pleasant:

Beginning on Washington Street at the west corporation line; thence east on Washington Street to the east corporation line.

Beginning again on the east corporation line of Mount Pleasant connecting with Washington Street; thence in a southeasterly direction through Sections 14 and 13-T71N-R6W and Section 18, 19, 20, 21 and

27-T71N-R5W to the west corporation line of New London, connecting with Main Street.

New London:

Beginning on Main Street at the west corporation line; thence easterly and southeast on Main Street to the east corporation line.

Beginning again on the east corporation line of New London, connecting with Main Street; thence southeasterly through Section 25 and 36-T71N-R5W to the Henry-Des Moines County line at approximately 2,000 feet south of the NE Corner of Section 36-T71N-R5W, Henry County (NW Corner Section 31-T71N-R4E, Des Moines County).

COMMISSION ORDER

DIVISION: Planning & Research

COMMISSION ORDER NUMBER: PR-79-272

SUBMITTED BY: C. I. MacGillivray

MEETING DATE: 11-2-78

DISCUSSION/BACKGROUND:

Due to a review of our Primary Road System records, US 34 in Henry County should be deleted, and the new description added should be officially included into the Primary Road System.

US 34 begins at the Henry-Jefferson County line approximately 2 miles west of Rome and travels in a southeasterly direction to the Henry-Des Moines County line approximately 2 miles southeast of New London via the Cities of Mount Pleasant and New London, Iowa.

PROPOSAL/ACTION RECOMMENDATION:

Locate US 34 and its extensions in Henry County, Iowa as follows:

Beginning on the Henry-Jefferson County line at a point approximately 300 feet south of the NW Corner Section 6-T71N-R7W, Henry County (NE Corner Section 1-T71N-R8W Jefferson County); thence in a southeasterly direction through Sections 6 and 5-T71N-R7W to a point approximately 650 feet north and 1300 feet west of the SE Corner Section 5-T71N-R7W; thence in an easterly and southeasterly direction through Sections 5, 4 and 9-T71N-R7W to a point near the NW Corner Section 10-T71N-R7W; thence southeasterly through Sections 10 and 11-T71N-R7W and easterly through Section 12-T71N-R7W and Section 7-T71N-R6W to a point near the W $\frac{1}{4}$ Corner Section 8-T71N-R6W; thence in an easterly direction through Section 8-T71N-R6W to the west corporation line of the City of Mount Pleasant connecting with an unnamed street.

Mount Pleasant:

Beginning at the west corporation line connecting with an unnamed street thence easterly to the east corporation line connecting with an unnamed street.

Beginning again on the east corporation line of the City of Mount Pleasant connecting with an unnamed street; thence in a southeasterly direction through Section 14 and 13-T71N-R6W and Section 18, 19, 20, 21 and 27-T71N-R5W to the west corporation line of the City of New London, connecting with an unnamed street.

New London:

Beginning on the west corporation line connecting with an unnamed street; thence easterly and southeasterly to the east corporation line connecting with an unnamed street.

Beginning again on the east corporation line of the City of New London, connecting with an unnamed street; thence southeasterly through Section 25 and 36-T71N-R5W to the Henry-Des Moines County line at

approximately 2000 feet south of the NE Corner of Section 36-T71N-R5W.

NOW, THEREFORE: Be it resolved that the Iowa Department of Transportation approve the location of US 34, Henry County, Iowa.

NOTE: To become effective upon the adoption of this resolution.

REVISED: 12-18-86

OFFICIAL DESCRIPTION CHANGE

COUNTY: Henry

ROUTE: US 34

APPROVAL DATE: 10-15-57

Beginning on the Henry-Jefferson County line at a point approximately 300 feet south of the NW Corner Section 6-T71N-R7W, Henry County, (NE Corner Section 1-T71N-R8W Jefferson County); thence in a southeasterly direction thru Sections 6 & 5-T71N-R7W to a point approximately 1/8 mile north and ¼ mile west of the SE Corner Section 5-T71N-R7W; thence in an easterly and southeasterly direction to a point near the NW Corner Section 10-T71N-R7W; thence southeasterly thru Sections 10 & 11-T71N-R7W and easterly thru Section 12-T71-R7W and Section 7-T71N-R6W to a point near the W ¼ Corner Section 8-T71N-R6W; thence in an easterly direction through Section 8-T71N-R6 to the west corporation line of the City of Mount Pleasant connecting with Washington Street.

Beginning again on the east corporation line of the City of Mount Pleasant and connecting with Washington Street; thence in a southeasterly direction through Section 10, 11, 14 and 13-T71-R6 and Section 18, 19, 20, 21 and 27-T71-R5 to the west corporation line of the Town of New London, connecting with Main Street.

Beginning again on the east corporation line of the Town of New London, connecting with the extension of Main Street; thence southeasterly through Section 25 and 36-T71-R5 to the Henry-Des Moines County line at a point approximately 100 feet south of the Chicago, Burlington and Quincy Railroads.

NOTE: The designation to become effective upon the completion and opening to traffic of relocated US 34 more specifically Project FN-151.

OFFICIAL DESCRIPTION CHANGE

COUNTY: Henry

CITY OF: New London

ROUTE: US 34

APPROVAL DATE: 1-27-55

Commencing on Main Street at the west corporation line; thence easterly on Main Street to Elm Street; thence easterly and southeasterly on the extension of Main Street to the east corporation line.

OFFICIAL DESCRIPTION CHANGE

COUNTY: Henry

CITY OF: Mount Pleasant

ROUTE: US 34

APPROVAL DATE: 2-5-36

Commencing on Washington Street at the west corporation line; thence easterly on Washington Street to the east corporation line.