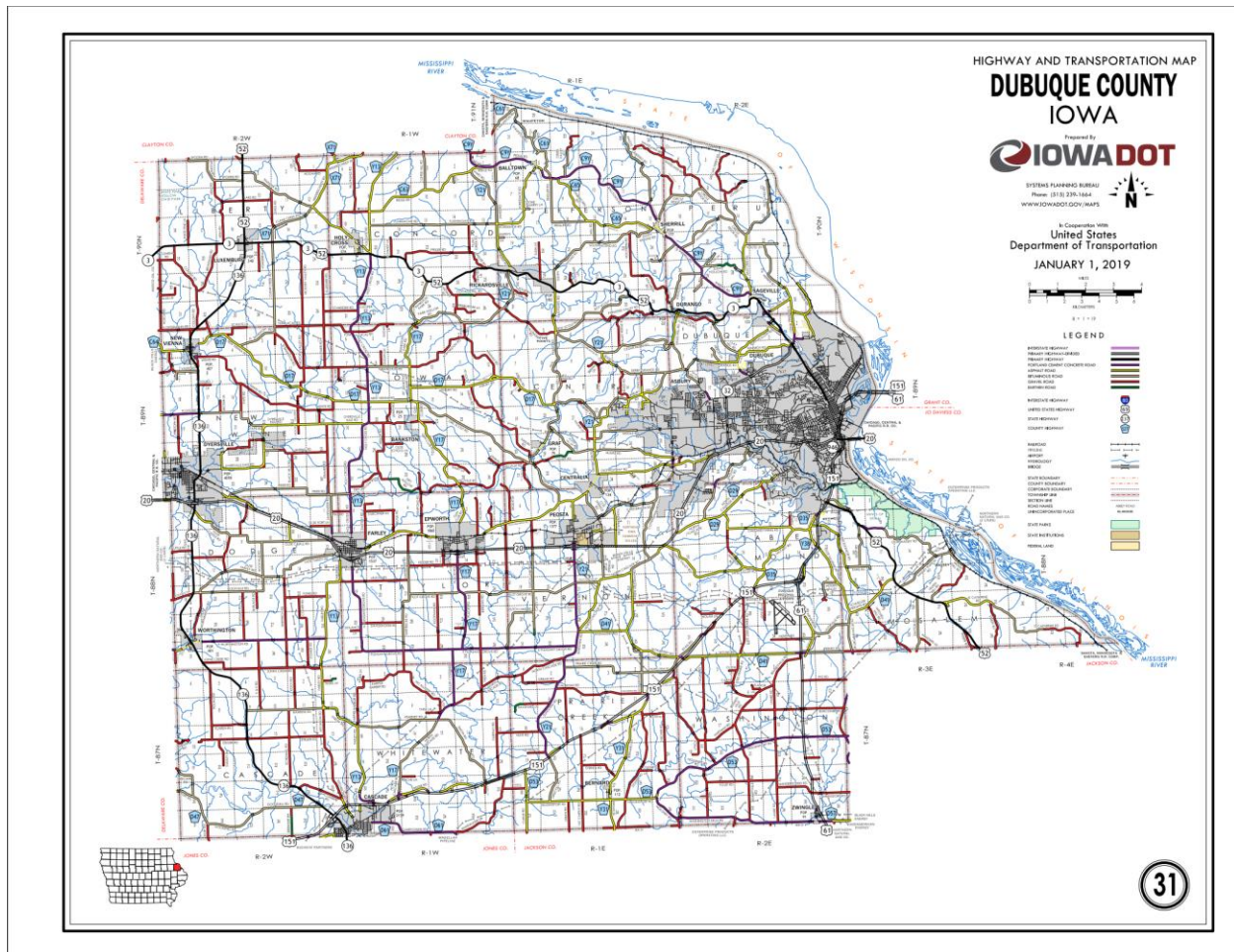


ENTERED DATE: 11-8-2019

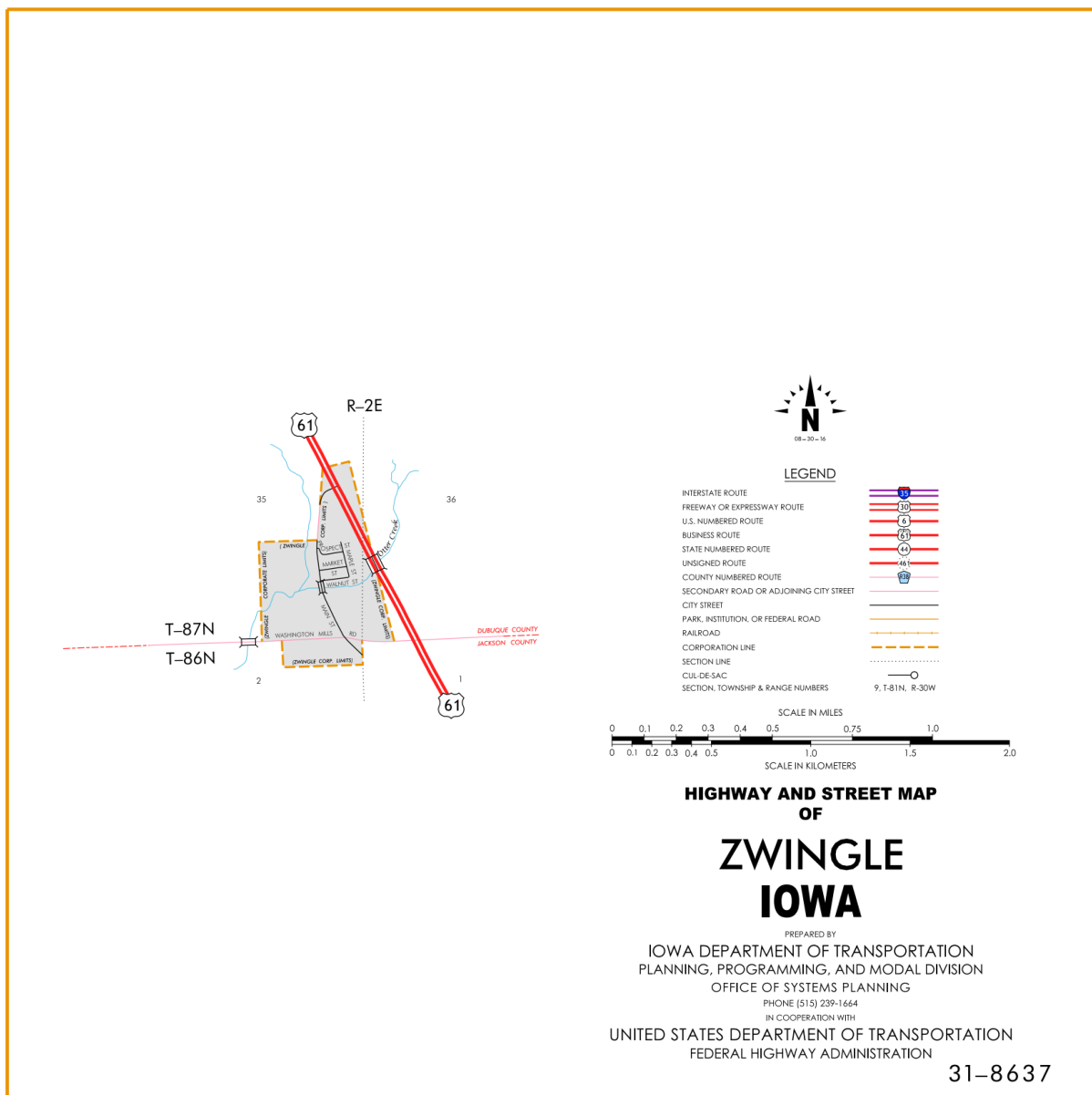


DISCUSSION/BACKGROUND:

Due to an annexation by the city of Dubuque in 2013, the official description for US 61 in the Primary Road System should be revised to reflect this change.

New Description – US 61 and its extensions in Dubuque County described as follows:

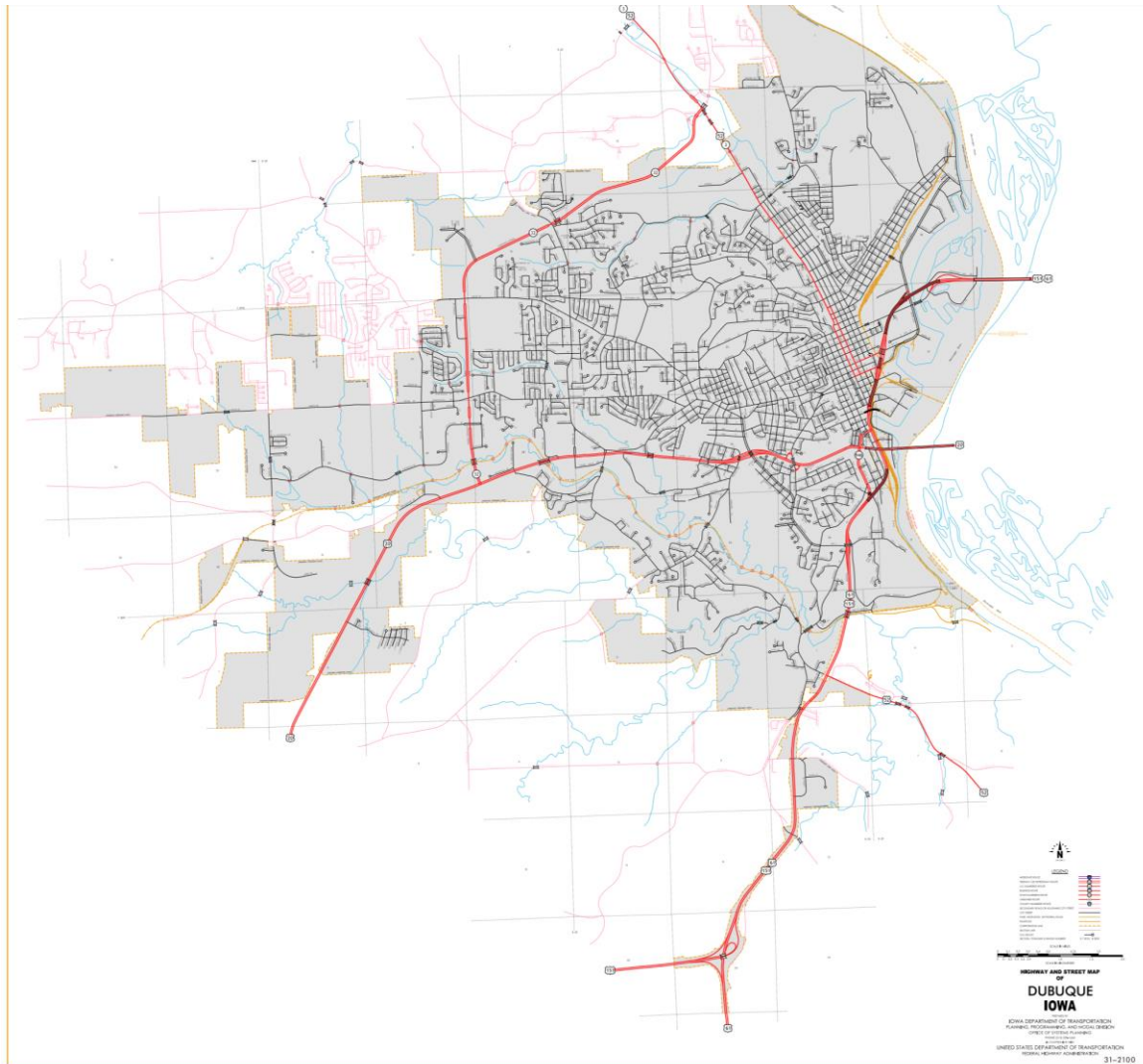
Beginning on the Dubuque–Jackson County line at a point approximately 714 feet east of SW Corner of Section 36–T87N–R2E, Dubuque County (Section 1–T86N–R2E, Jackson County); thence in a northwesterly direction through said Section 36 to the east corporation line of Zwingle.



Zwingle:

Beginning at the east corporation line; thence in a northwesterly direction to the north corporation line.

Beginning again on the north corporation line of Zwingle; thence in a northerly and northwesterly direction through Sections 35, 26 and 23-T87N-R2E, to a point near the center of Section 23-T87N-R2E; thence northerly following substantially the center section line through Sections 23, 14, 11 and 2-T87N-R2E and Sections 35 and 26-T88N-R2E to the south corporation line of Dubuque.



Dubuque:

Beginning at the south corporation line; thence north, northeast, north and northeast to the north corporation line.

Beginning again at the north corporation line of Dubuque; thence northeasterly through Section 1-T88N-R02E to the south corporation line of Dubuque.

Dubuque:

Beginning at the south corporation line; then northeast to the north corporation line.

Beginning again at the north corporation line of Dubuque; thence northeast through Section 1–T88N–R02E (south junction of US 52) thence northeast and north to the south corporation line of Dubuque connecting with Kerrigan Road.

Dubuque:

Beginning on Kerrigan Road at the south corporation line; thence north on Kerrigan Road to South Locust Street; thence northeasterly, northerly, northeasterly and northerly to the east corporation line at the Iowa–Wisconsin line.

STAFF ACTION

OFFICE: Transportation Data

STAFF ACTION NUMBER: S-96-1278

SUBMITTED BY: Patrick R. Cain

SUBMITTAL DATE: 2-26-96

DISCUSSION/BACKGROUND:

Due to the relocation of several routes in Dubuque in 1993, the routing for US 61 was revised and the official description in the Primary Road System should be revised to reflect this change.

PROPOSAL/ACTION RECOMMENDATION:

It is recommended that the old description of US 61 in Dubuque County be deleted from the Primary Road System and the new description, as described in the attachment, be included in the Primary Road System.

New Description – US 61 and its extensions in Dubuque County described as follows:

Beginning on the Dubuque–Jackson County line at a point approximately 714 feet east of SW Corner of Section 36–T87N–R2E, Dubuque County (Section 1–T86N–R2E, Jackson County); thence in a northwesterly direction through said Section 36 to the east corporation line of Zwingle, connecting with an unnamed street.

Zwingle:

Beginning on an unnamed street at the east corporation line; thence in a northwesterly direction on said unnamed street to the north corporation line.

Beginning again on the north corporation line of Zwingle connecting with an unnamed street; thence in a northerly and northwesterly direction through Sections 35, 26 and 23–T87N–R2E, to a point near the center of Section 23–T87N–R2E; thence northerly following substantially the center section line through Sections 23, 14, 11 and 2–T87N–R2E and Sections 35 and 26–T88N–R2E; thence in a northerly, northeasterly and northerly direction through Sections 23 (junction US 151), 14, 13, 12 and 1–T88N–R2E (south junction US 52) to the south corporation line of Dubuque connecting with Kerrigan Road.

Dubuque:

Beginning on Kerrigan Road at the south corporation line; thence north on Kerrigan Road to South Locust Street; thence northeasterly, northerly, northeasterly and northerly on unnamed street to the east corporation line at the Iowa–Wisconsin line.

STAFF ACTION

OFFICE: Transportation Data
STAFF ACTION NUMBER: S-96-1277
SUBMITTED BY: Patrick R. Cain
SUBMITTAL DATE: 2-26-96

DISCUSSION/BACKGROUND:

Due to the relocation of several routes in Dubuque in 1992, the routing for US 61 was revised and the official description in the Primary Road System should be revised to reflect this change.

At the same time some of the old route became unsigned Iowa 948 and unsigned Iowa 959.

PROPOSAL/ACTION RECOMMENDATION:

It is recommended that the old description of US 61 in Dubuque County be deleted from the Primary Road System and the new description, as described in the attachment, be included in the Primary Road System.

New Description – US 61 and its extensions in Dubuque County described as follows:

Beginning on the Dubuque–Jackson County line at a point approximately 714 feet east of SW Corner of Section 36–T87N–R2E, Dubuque County (Section 1–T86N–R2E, Jackson County); thence in a northwesterly direction through said Section 36 to the east corporation line of Zwingle, connecting with an unnamed street.

Zwingle:

Beginning on an unnamed street at the east corporation line; thence in a northwesterly direction on said unnamed street to the north corporation line.

Beginning again on the north corporation line of Zwingle connecting with an unnamed street; thence in a northerly and northwesterly direction through Sections 35, 26 and 23–T87N–R2E, to a point near the center of Section 23–T87N–R2E; thence northerly following substantially the center section line through Sections 23, 14, 11 and 2–T87N–R2E and Sections 35 and 26–T88N–R2E; thence in a northerly, northeasterly and northerly direction through Sections 23 (junction US 151), 14, 13, 12 and 1–T88N–R2E (south junction US 52) to the south corporation line of Dubuque connecting with Kerrigan Road.

Dubuque:

Beginning on Kerrigan Road at the south corporation line; thence northerly on Kerrigan Road to South Locust Street; thence northeast and north on unnamed street to near 3rd Street; thence northeast (begin one–way northbound) to White Street; thence northwesterly on White Street to 9th Street; thence easterly and northeasterly on 9th Street to northbound ramps then northbound to unnamed street (end one–way northbound); thence northeasterly and easterly on unnamed street to east corporation line at the Iowa–Wisconsin line.

Also

Beginning at the intersection of off ramp and unnamed street (begin one-way southbound); thence southwesterly on off ramp to 11th Street; thence westerly to Central Avenue; thence southeasterly on Central Avenue to 4th Street; thence southwesterly on unnamed street to near 3rd Street (end one-way southbound).

STAFF ACTION

OFFICE: Transportation Data

STAFF ACTION NUMBER: S-96-1276

SUBMITTED BY: Patrick R. Cain

SUBMITTAL DATE: 2-14-96

DISCUSSION/BACKGROUND:

Due to the relocation of several routes in Dubuque in 1991, the routing for US 61 was revised and the official description in the Primary Road System should be revised to reflect this change.

PROPOSAL/CTION RECOMMENDATION:

It is recommended that the old description of US 61 in Dubuque County be deleted from the Primary Road System and the new description, as described in the attachment, be included in the Primary Road System.

New Description – US 61 and its extensions in Dubuque County described as follows:

Beginning on the Dubuque-Jackson County line at a point approximately 714 feet east of SW Corner of Section 36-T87N-R2E Dubuque County (Section 1-T86N-R2E Jackson County); thence in a northwesterly direction through said Section 36 to the east corporation line of Zwingle, connecting with an unnamed street.

Zwingle:

Beginning on an unnamed street at the east corporation line; thence in a northwesterly direction on said unnamed street to the north corporation line.

Beginning again on the north corporation line of Zwingle connecting with an unnamed street; thence in a northerly and northwesterly direction through Sections 35, 26 and 23-T87N-R2E, to a point near the center of Section 23-T87N-R2E; thence northerly following substantially the center section line through Sections 23, 14, 11 and 2-T87N-R2E and Sections 35 and 26-T88N-R2E; thence in a northerly, northeasterly and northerly direction through Sections 23 (junction US 151), 14, 13, 12 and 1-T88N-R2E (south junction US 52) to the south corporation line of Dubuque connecting with Kerrigan Road.

Dubuque:

Beginning on Kerrigan Road at the south corporation line; thence north on Kerrigan Road to South Locust Street; thence northeast and north on unnamed street to near 3rd Street; thence northeast (begin one-way northbound) to White Street; thence northwesterly on White Street to 9th Street; thence easterly and northeasterly on 9th Street to 11th Street; thence easterly on 11th Street to Kerper Boulevard; thence north on Kerper Boulevard to 16th Street; thence easterly on 16th Street to unnamed street (end one-way northbound); thence easterly on 16th Street to east corporation line at the Iowa-Wisconsin line.

Also

Beginning at the intersection of 16th Street and unnamed street (begin one-way southbound); thence westerly on unnamed street to 11th Street; thence westerly to Central Avenue; thence southeasterly on Central Avenue to 4th Street; thence southwesterly on unnamed street to near 3rd Street (end one-way southbound).

OFFICIAL DESCRIPTION CHANGE

COUNTY: Dubuque

ROUTE: US 61

STAFF ACTION NUMBER: S-87-718

APPROVAL DATE: 12-18-86

New Description – US 61 and its extensions in Dubuque County described as follows:

Beginning on the Dubuque–Jackson County line at a point approximately 714 feet east of SW Corner of Section 36–T87N–R2E Dubuque County (Section 1–T86N–R2E Jackson County); thence in a northwesterly direction through said Section 36 to the east corporation line of Zwingle, connecting with an unnamed street.

Zwingle:

Beginning on an unnamed street at the east corporation line; thence in a northwesterly direction on said unnamed street to the north corporation line.

Beginning again on the north corporation line of Zwingle connecting with an unnamed street; thence in a northerly and northwesterly direction through Sections 35, 26, and 23–T87N–R2E, to a point near the center of Section 23–T87N–R2E; thence northerly following substantially the center section line through Sections 23, 14, 11 and 2–T87N–R2E and Sections 35 and 26–T88N–R2E; thence in a northerly, northeasterly and northerly direction through Sections 23 (junction US 151), 14, 13, 12 and 1–T88N–R2E (south junction US 52) to the south corporation line of Dubuque connecting with Kerrigan Road.

Dubuque:

Beginning on Kerrigan Road at the south corporation line; thence northerly on Kerrigan Road to South Locust Street; thence northerly on South Locust Street to Locust Street (junction US 20); thence north (begin one-way northbound) on Locust Street to 4th Street; thence easterly on 4th Street to White Street; thence northerly on White Street to 9th Street; thence easterly and northeasterly on 9th Street to 11th Street (end one-way northbound); thence easterly on 11th Street to Kerper Boulevard; thence north on Kerper Boulevard to 16th Street; thence easterly on 16th Street to the east corporation line at the Iowa-Wisconsin state line.

Also with a spur

Beginning at the intersection of 9th Street and 11th Street (begin one-way southbound); thence westerly on 11th Street to Central Avenue; thence southeast on Central Avenue to 5th Street; thence southwest on 5th Street to Bluff Street; thence southeast and southwest on Bluff Street to Dodge Street (junction US 20) (end one-way southbound).

STAFF ACTION

OFFICE: Transportation Inventory

STAFF ACTION NUMBER: S-83-782

SUBMITTED BY: Patrick R. Cain

SUBMITTAL DATE: 2-17-83

DISCUSSION/BACKGROUND:

US 61 begins on the Dubuque–Jackson County line at the City of Zwingle and travels northerly via the Cities of Zwingle and Dubuque to the Iowa–Wisconsin State Line at the City of Dubuque.

Since the new City Island Bridge is now open to traffic and US 61 traffic is being routed over a temporary connection via Dubuque City streets across the City Island Bridge to the State of Wisconsin, the official description of US 61 should be revised to reflect this change.

PROPOSAL/ACTION RECOMMENDATION:

It is recommended to approve deleting the present description of US 61 in Dubuque County from the primary road system and approve including the attached new description of US 61 in the primary road system.

Locate US 61 and its extensions in Dubuque County as follows:

Beginning on the Dubuque–Jackson County line at a point approximately 714 feet east of SW Corner of Section 36–T87N–R2E Dubuque (Section 1–T86N–R2E Jackson County); thence in a northwesterly direction through said Section 36 to the east corporation line of the City of Zwingle, connecting with an unnamed street.

Zwingle:

Beginning on an unnamed street at the east corporation line; thence in a northwesterly direction on said unnamed street to the north corporation line.

Beginning again on the north corporation line of the City of Zwingle connecting with an unnamed street; thence in a northerly and northwesterly direction through Sections 35, 26 and 23–T87N–R2E, to a point near the center of Section 23–T87N–R2E; thence northerly following substantially the center section line through Sections 23, 14, 11 and 2–T87N–R2E and Sections 35 and

26-T88N-R2E; thence in a northerly, northeasterly and northerly direction through Sections 23 (junction US 151), 14, 13, 12 and 1-T88N-R2E (south junction US 52) to the south corporation line of the City of Dubuque connecting with an unnamed street.

Dubuque:

Beginning at the south corporation line connecting with an unnamed street; thence generally northerly, northeasterly and northwesterly to Ninth Street; thence in a northeasterly, northwesterly and northeasterly direction over a temporary connection on city streets to the City Island Bridge; thence northeasterly to the Iowa-Wisconsin State line on the City Island Bridge.

Also with a spur

With a temporary connection over city streets from the intersection of Eleventh Street and Kerper Boulevard southwesterly to Central Avenue; thence beginning at the intersection of Eleventh Street and Central Avenue (begin one-way southbound); thence southeasterly, southwesterly and southeasterly to Dodge Street (end one-way southbound).

COMMISSION ORDER

DIVISION: Planning & Research

COMMISSION ORDER NUMBER: PR-79-272

SUBMITTED BY: C.I. MacGillivray

MEETING DATE: 11-2-78

DISCUSSION/BACKGROUND:

Due to a review of our Primary Road System records US 61 in Dubuque County should be deleted and the new description added should be officially included into the Primary System.

US 61 begins on the Dubuque–Jackson County line just east of Zwingle, and travels in a generally northerly direction to the Iowa–Wisconsin State line in Dubuque, Iowa.

PROPOSAL/ACTION RECOMMENDATION:

Locate US 61 and its extensions in Dubuque County as follows:

Beginning on the Dubuque–Jackson County line at a point approximately 714 feet east of SW Corner of Section 36–T87N–R2E Dubuque County (Section 1–T86N–R2E Jackson County); thence in a northwesterly direction through said Section 36 to the east corporation line of the City of Zwingle, connecting with an unnamed street.

Zwingle:

Beginning on an unnamed street at the east corporation line; thence in a northwesterly direction on said unnamed street to the north corporation line.

Beginning again on the north corporation line of the City of Zwingle connecting with an unnamed street; thence in a northerly and northwesterly direction through Sections 35, 26 and 23–T87N–R2E, to a point near the center of Section 23–T87N–R2E; thence northerly following substantially the center section line through Sections 23, 14, 11 and 2–T87N–R2E and Sections 35 and 26–T88N–R2E; thence in a northerly, northeasterly and northerly direction through Sections 23 (junction US 151), 14, 13, 12 and 1–T88N–R2E (south junction US 52) to the south corporation line of the City of Dubuque connecting with an unnamed street.

Dubuque:

Beginning at the south corporation line connecting with an unnamed street; thence generally northerly, northeasterly, northwesterly and northeasterly to the east corporation line on the Dubuque–Wisconsin Bridge over the Mississippi River.

Also with a spur

Beginning at the intersection of Central Avenue and East 20th Street (begin one way southbound); thence southeasterly, southwesterly and southeasterly to Dodge Street (end of one way southbound).

NOW, THEREFORE: Be it resolved that the Iowa Department of Transportation approve the location of US 61 in Dubuque County, Iowa.

NOTE: To become affective upon the adoption of this resolution.

REVISED: 2-17-83

COMMISSION RESOLUTION

DIVISION: Planning & Research

COMMISSION ORDER NUMBER: 68-1404

SUBMITTED BY: Raymond L. Kassel

MEETING DATE: 10-16-68

Locate US 61 in Dubuque County as follows:

Beginning on the Dubuque-Jackson County line at a point approximately 714 feet east of SW Corner of Section 36-T87N-R2E Dubuque County (Section 1-T86N-R2E Jackson County); thence in a northwesterly direction to the east corporation line of the Town of Zwingle, connecting with an unnamed street.

Beginning again on the north corporation line of the Town of Zwingle connecting with an unnamed street and continuing in a northerly and northwesterly direction through Section 35, 26, 23-T87N-R2E, to a point near the center of Section 23-T87N-R2E; thence north approximately on the $\frac{1}{4}$ section line through Section 23, 14, 11 and 2-T87N-R2E and 35 and 26-T88N-R2E; thence in a northerly, northeasterly, and northerly direction through Section 23, 14, 13, 12 and 1-T88N-R2E to the south corporation line of the City of Dubuque connecting with Kerrigan Road.

Zwingle:

Beginning on an unnamed street at the east corporation line; thence in a northwesterly direction on said unnamed street to the north corporation line.

NOW, THEREFORE: Be it resolved that the Iowa State Highway Commission approve the revision of the above Primary Road Description.

NOTE: To become effective upon adoption of this resolution.

The old location of US 61 from Station 16+80 to Station 31+04 will revert to the Dubuque County Secondary Road System as per agreement signed 5-22-63. The old location of US 61 from Station 324+88 to Station 401 +17, Station 450+93 to Station 495+10, and Station 534+50 to Station 586+93, will revert to the Dubuque County Secondary Road System in accord with Section 313.2 Code of Iowa.

OFFICIAL DESCRIPTION CHANGE

COUNTY: Dubuque

CITY OF: Dubuque

ROUTE: US 61

APPROVAL DATE: 10-2-57

Beginning on Kerrigan Road at the south corporation line; thence northerly on Kerrigan Road to South Locust Street; thence northerly on South Locust Street and Locust Street to Fourth Street; thence easterly on Fourth Street to Central Avenue; thence northwesterly on Central Avenue to Twentieth Street; thence northeasterly on Twentieth Street to Rhomberg Avenue; thence northeasterly on Rhomberg Avenue to the east corporation line on the Dubuque-Wisconsin Bridge over the Mississippi River.

OFFICIAL DESCRIPTION CHANGE

COUNTY: Dubuque

CITY OF: Dubuque

ROUTE: US 61

APPROVAL DATE: 10-2-57

Commencing on an unnamed street at the south corporation line; thence northerly on said unnamed street to Rockdale Road at a point approximately mile north of the intersection of Rockdale Road and Grandview Avenue; thence northerly on Rockdale Road, South Locust and Locust Streets to 4th Street; thence easterly on 4th Street to Central Avenue; thence northwesterly on Central Avenue to 20th Street; thence northeasterly on 20th Street to Rhomberg Avenue; thence northeasterly on Rhomberg Avenue to the east corporation line on the Dubuque-Wisconsin Bridge over the Mississippi River.

OFFICIAL DESCRIPTION CHANGE

COUNTY: Dubuque

ROUTE: US 61

Beginning on the Dubuque–Jackson County line at a point approximately 714 feet east of SW Corner of Section 36–T87N–R2E Dubuque County (Section 1–T86N–R2E Jackson County); thence in a northwesterly direction to the east corporation line of the Town of Zwingle, connecting with an unnamed street.

Beginning again on the north corporation line of the Town of Zwingle connecting with an unnamed street and continuing in a northerly and northwesterly direction through Sections 35, 26, and 23–T87N–R2E, to a point near the center of Section 23–T87N–R2E; thence north approximately on the $\frac{1}{4}$ section line through Sections 23, 14, 11, and 2–T87N–R2E and 35 and 26–T88N–R2E; thence in a northerly, northeasterly, and northerly direction through Sections 23, 14, 13, 12, and 1–T88–R2E to the south corporation line of the City of Dubuque connecting with Kerrigan Road.

OFFICIAL DESCRIPTION CHANGE

COUNTY: Dubuque

ROUTE: US 61

APPROVAL DATE: 10-2-57

Beginning on the north corporation line of the Town of Zwingle, connecting with Main Street; thence in a northerly direction through Section 35, 26 and 23-T87-R2E, to a point approximately 900 feet north of the S $\frac{1}{4}$ Corner of 23-T87N-R2E; thence north following substantially the quarter section line to a point approximately 1500 feet north of the center of Section 2-T87N-R2E; thence in a northerly, direction through Section 2-T87N-R2E and Section 35, 26, 23, 14, 13, 12, 11 and 12-T88N-R2E to a point approximately $\frac{1}{4}$ mile east and 700 feet south of the NW Corner Section 12-T88N-R2E; thence in a northeasterly and northerly direction thru Sections 12 and 1-T88N-R2E to the south corporation line of the City of Dubuque, connecting with an unnamed street.