

OFFICIAL DESCRIPTION CHANGE**OFFICE:** Transportation Data**EFFECTIVE DATE:** 12-02-2004**ENTERED BY:** Stefani Wonders**ENTERED DATE:** 02-11-2005**DISCUSSION/BACKGROUND:**

Transfer of jurisdiction agreement number 2003-TJ-045, between Mahaska County and the Iowa Department of Transportation, transferred that portion of Unsigned Iowa 342 from 8th Street at the north corporation line of Eddyville (approximately 2600 feet south and 90 feet east of the NE Corner of said Section 31); thence northerly following substantially the section line of Sections 31 and 30-T74N-R15W to approximately 1350 feet south of the W ¼ Corner of said Section 30 to county jurisdiction on December 2, 2004.

PROPOSAL/ACTION RECOMMENDATION:

New Description – US 63 and its extensions in Mahaska County described as follows:

Beginning at the Mahaska-Warren County line approximately 400 feet west of the SE Corner of Section 31-T74N-R15W; thence northwesterly through Sections 31 and 30-T74N-R15W to a point near the W ¼ Corner of said Section 30; thence northerly following substantially the west section line of Sections 30, 19, 18, 7, and 6-T74N-R15W and Section 31-T75N-R15W to a point near the W ¼ Corner of said Section 31; thence northwesterly through Sections 36 and 25-T75N-R16W to the south corporation line of Oskaloosa (approximately 1300 feet south and 1030 feet west of the NE Corner of said Section 25) connecting with Market Street.

Oskaloosa:

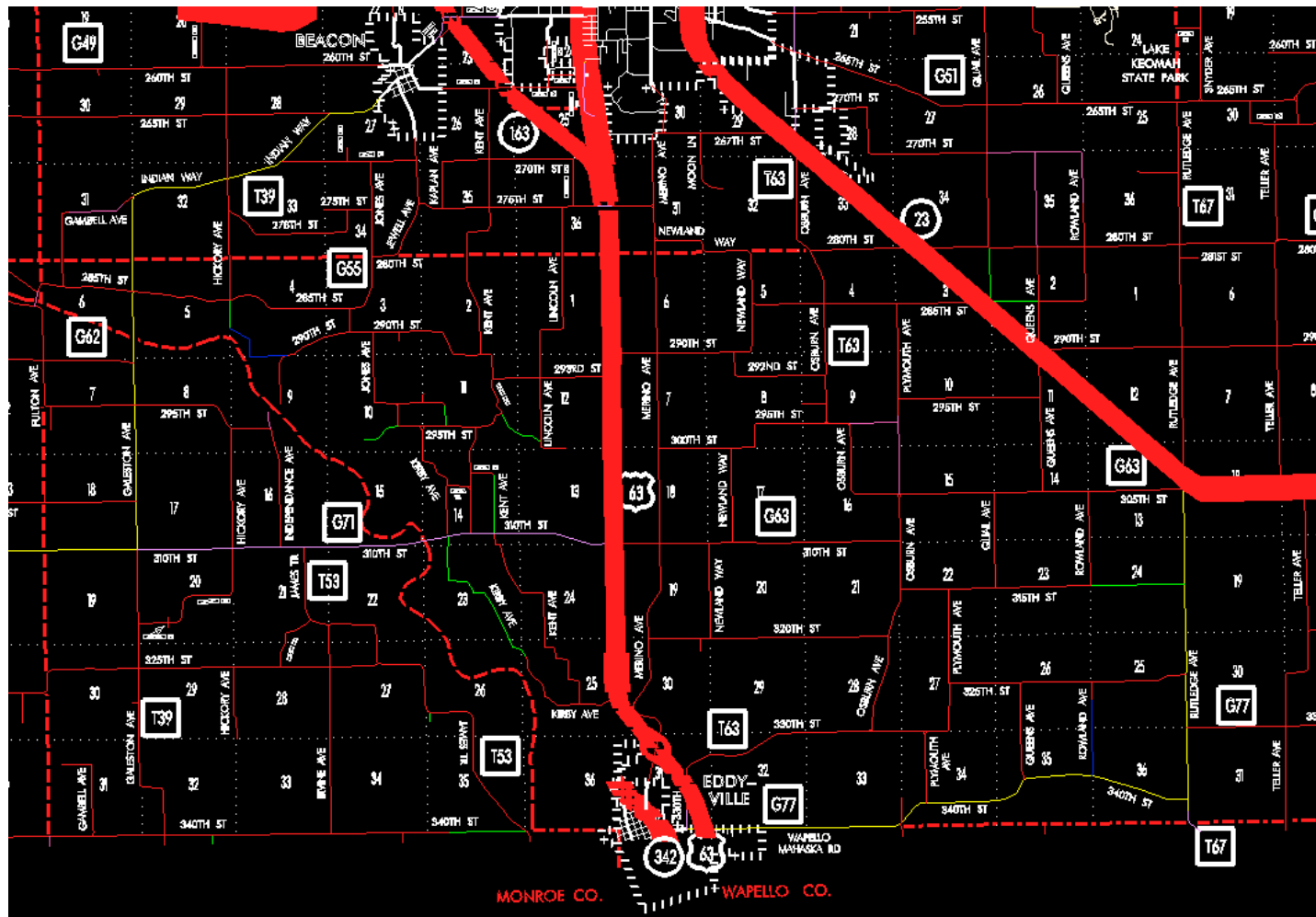
Beginning on the south corporation line connecting with Market Street; thence north on Market Street to the north corporation line (approximately 660 feet south and 1340 feet west of the NE Corner of Section 12-T75N-R16W).

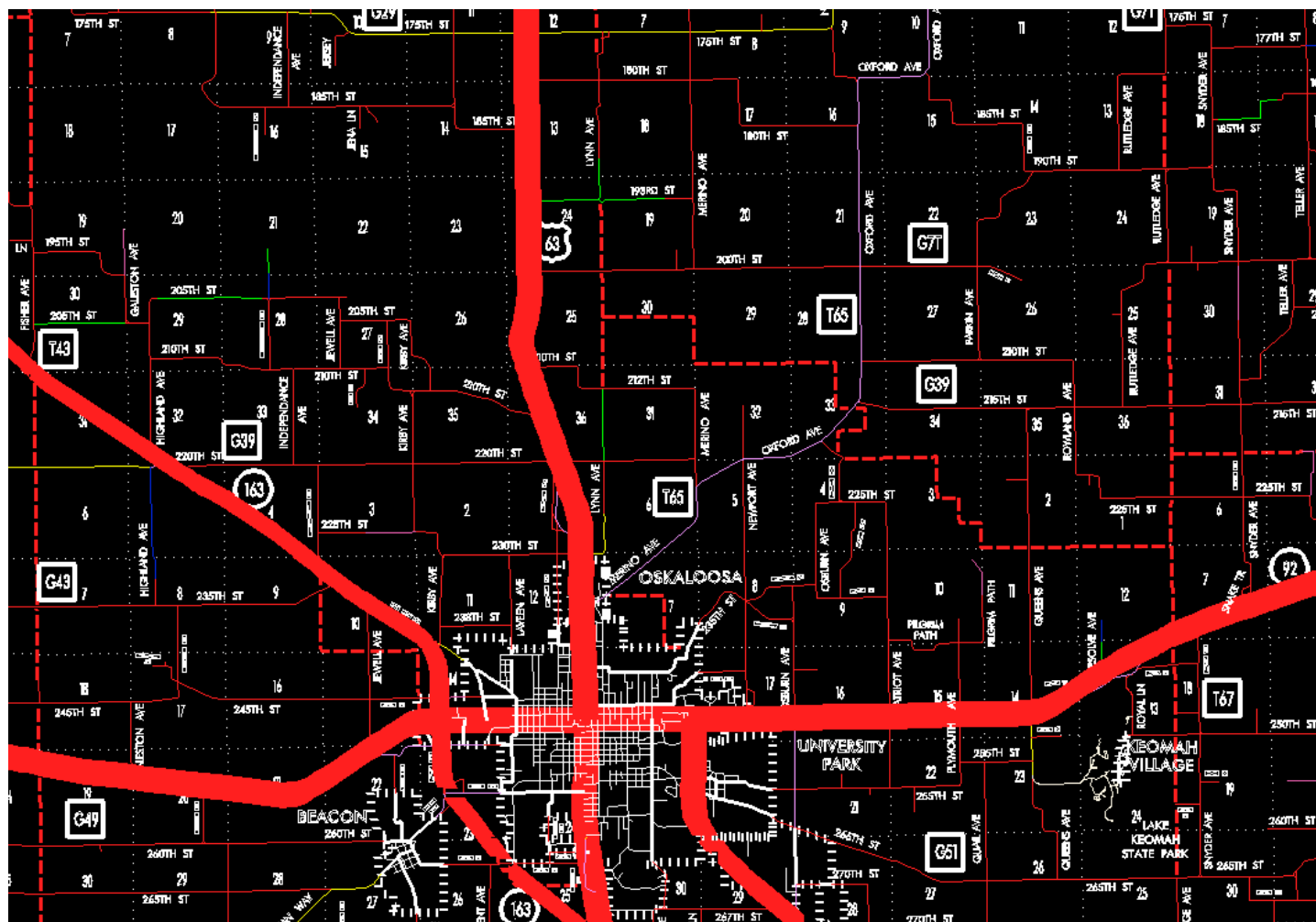
Beginning again on the north corporation line of Oskaloosa connecting with Market Street; thence northerly and northwesterly through Sections 12 and 1-T75N-R16W and Sections 36 and 25-T76N-R16W to a point near the N $\frac{1}{4}$ NW $\frac{1}{4}$ Corner of said Section 25; thence northerly through Sections 24, 13, 12, and 1-T76N-R16W to a point approximately 1180 feet north and 2730 feet east of the SW Corner of said Section; thence northerly following substantially the center section line of Section 1-T76N-R16W and Sections 36, 25, and 24-T77N-R16W to the south corporation line of New Sharon (approximately 1250 feet south and 2760 feet east of the NW Corner of said Section 24) connecting with Main Street.

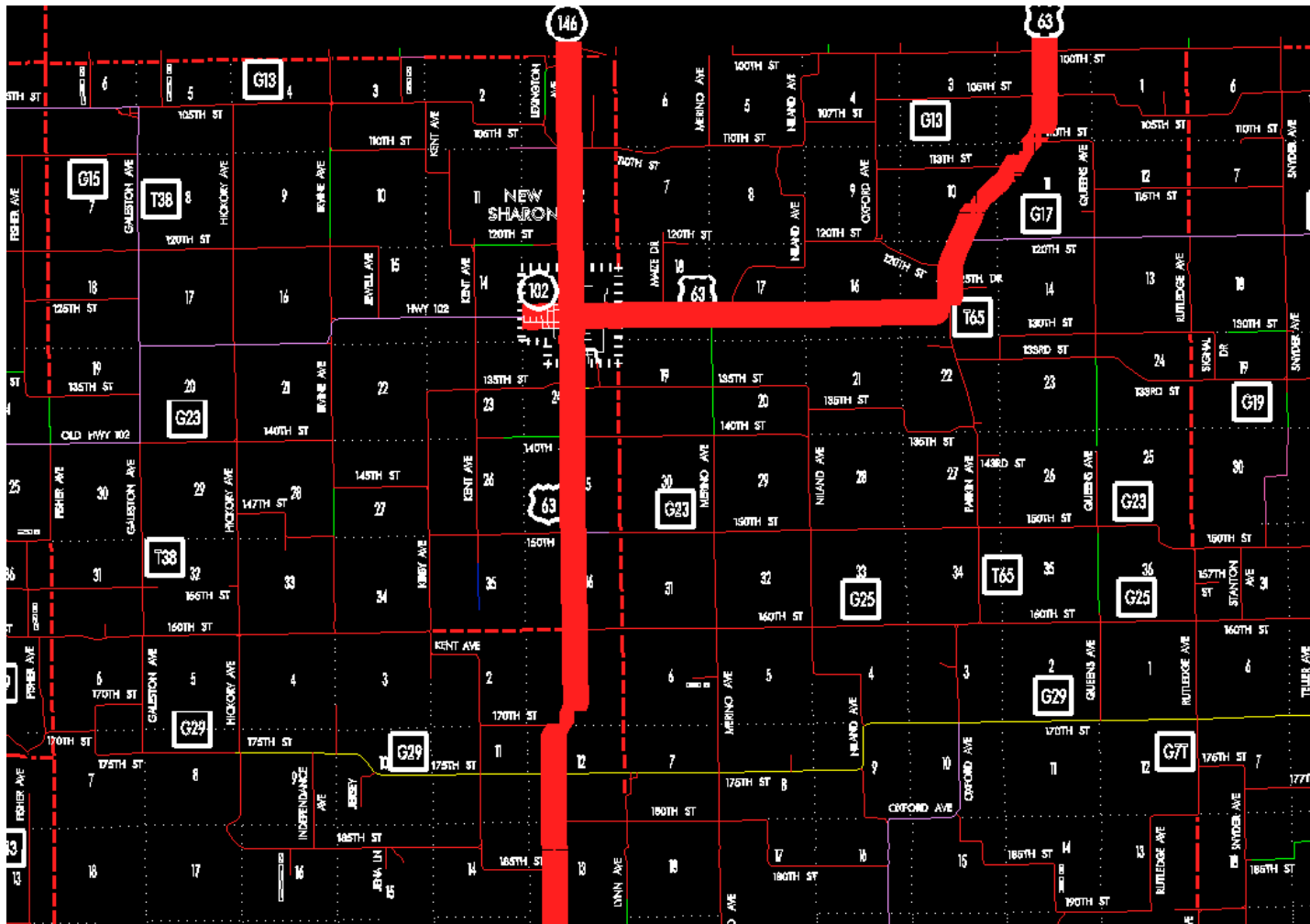
New Sharon:

Beginning on the south corporation line connecting with Main Street; thence north on Main Street to Market Street; thence east on Market Street to the east corporation line (approximately 1390 feet north of the NE Corner of Section 19-T77N-R15W).

Beginning again on the east corporation line of New Sharon connecting with Market Street; thence easterly direction through Sections 18, 17, 16, and 15-T77N-R15W to a point southwest of the center of said Section 15-T77N-R15W; thence curving in a northeasterly and northerly direction through said Section 15 to a point near the S $\frac{1}{4}$ Corner Section 10-T77N-R15W; thence in a northeasterly direction through Section 10 and 11-T77N-R15W to a point near the S $\frac{1}{4}$ Corner Section 2-T77N-R15W; thence north through said Section 2 to a point near the N $\frac{1}{4}$ Corner Section 2-T77N-R15W on the Mahaska-Poweshiek County line (S $\frac{1}{4}$ Corner Section 35-T78N-R15W, Poweshiek County).







STAFF ACTION

OFFICE: Transportation Inventory

STAFF ACTION NUMBER: S-98-0495

SUBMITTED BY: Patrick R. Cain

SUBMITTAL DATE: 10-28-97

DISCUSSION/BACKGROUND:

Due to the relocation of US 63 north of Ottumwa, and the rerouting of US 63, Iowa 23, Iowa 149 and Iowa 137, US 63 is being routed over the section of road from Eddyville to Oskaloosa, formerly Iowa 137.

PROPOSAL/ACTION RECOMMENDATION:

It is recommended that the old description of US 63 in Mahaska County be deleted from the Primary Road System and the new description, as described in the attachment, be included in the Primary Road System.

New Description – US 63 and its extensions in Mahaska County described as follows:

Eddyville:

Beginning on 8th Street at the Mahaska–Wapello County line; thence northwest on 8th Street to the north corporation line.

Beginning on the north corporation line of Eddyville connecting with 8th Street; thence northerly following substantially the section line of Sections 31, 30, 19, 18, 7, and 6–T74N–R15W and Section 31–T75N–R15W to the E ¼ Corner of Section 36–T75N–R16W; thence northwesterly through Sections 36 and 25–T75N–R16W to the south corporation line of Oskaloosa connecting with Market Street.

Oskaloosa:

Beginning on Market Street at the south corporation line; thence north on Market Street to the north corporation line.

Beginning again on the north corporation line of Oskaloosa connection with Market Street; thence north following substantially the east quarter section line of Sections 12 and 1–T75N–R16W to a point approximately 396 meters (1,300 feet) east and 122 meters (400 feet) north of the S ¼ Corner Section 1–T75N–R16W; thence in a northerly and northwesterly direction through Section 1–

T75N-R16W, and Section 36 and 25-T76N-R16W to a point approximately 396 meters (1,300 feet) east and 213 meters (700 feet) north of the W $\frac{1}{4}$ Corner Section 25-T76N-R16W; thence north following substantially the west quarter section line of Sections 25, 24, 13, and 12-T76N-R16W to a point approximately 396 meters (1,300 feet) east and 244 meters (800 feet) south of the NW Corner of Section 12-T76N-R16W; thence in an northeasterly direction through Sections 12 and 1-T76N-R16W to a point approximately 396 meters (1,300 feet) north of the S $\frac{1}{4}$ Corner of Section 1-T76N-R16W; thence north following substantially the center section line of Section 1-T76N-R16W, and Sections 36, 25, and 24-T77N-R16W to the south corporation line of New Sharon connecting with Main Street.

New Sharon:

Beginning on Main Street at the south corporation line; thence north on Main Street to Market Street; thence east on Market Street to the east corporation line.

Beginning again on the east corporation line of New Sharon connecting with Market Street; thence in an easterly direction through Sections 18, 17, 16, and 15-T77N-R15W to a point southwest of the center of said Section 15-T77N-R15W; thence curving in a northeasterly and northerly direction through said Section 15 to a point near the S $\frac{1}{4}$ Corner Section 10-T77N-R15W; thence in a northeasterly direction through Section 10 and 11-T77N-R15W to a point near the S $\frac{1}{4}$ Corner Section 2-T77N-R15W; thence north through said Section 2 to a point near the N $\frac{1}{4}$ Corner Section 2-T77N-R15W on the Mahaska-Poweshiek County line (S $\frac{1}{4}$ Corner Section 35-T78N-R15W, Poweshiek County).

OFFICIAL DESCRIPTION CHANGE

COUNTY: Mahaska

ROUTE: US 63

STAFF ACTION NUMBER: S-87-1533

APPROVAL DATE: 5-13-87

New Description – US 63 and its extensions in Mahaska County described as follows:

Beginning at a point near the SE Corner of Section 36-T74N-R14W, Mahaska County (SW Corner of Section 31-T74N-R13W, Keokuk County) (NW Corner of Section 6-T73N-R13W, Wapello County); thence north along the Mahaska-Keokuk County line (see Keokuk County) to a point approximately 800 feet south of the NE Corner of Section 24-T74N-R14W, Mahaska County (NW Corner Section 19-T74N-R13W, Keokuk County); thence curving in a northwesterly direction to a point approximately 400 feet west of the NE Corner of Section 24-T74N-R14W; thence in a northwesterly direction through Section 13-T74N-R14W to the east corporation line of Fremont, connecting with an unnamed street.

Fremont:

Beginning on an unnamed street at the east corporation line; thence northwest on unnamed street to Main Street; thence west on Main Street to the west corporation line.

Beginning again on the west corporation line of Fremont, connecting with Main Street; thence west following substantially the center section line of Sections 14, 15, 16, 17 and 18-T74N-R14W to a point approximately 800 feet east of the W $\frac{1}{4}$ Corner of Section 18-T74N-R14W; thence in a northwesterly direction through Sections 18-T74N-R14W; Sections 13, 12, 11, 2 and 3-T74N-R15W,

and Sections 34, 33, 28 and 29-T75N-R15W to the south corporation line of University Park, connecting with an unnamed street.

University Park:

Beginning on an unnamed street at the south corporation line; thence northwest on unnamed street to the west corporation line (east corporation line of the Oskaloosa).

Oskaloosa:

Beginning on 17th Street at the east corporation line (west corporation line of University Park); thence northwest and north on 17th Street to "A" Avenue; thence west on "A" Avenue to Market Street; thence north on Market Street to the north corporation line.

Beginning again on the north corporation line of Oskaloosa connecting with Market Street; thence north following substantially the east quarter section line of Sections 12 and 1-T75N-R16W to a point approximately 1,300 feet east and 400 feet north of the S $\frac{1}{4}$ Corner Section 1-T75N-R16W; thence in a northerly and northwesterly direction through Section 1-T75N-R16W, and Section 36 and 25-T76N-R16W to a point approximately 1,300 feet east and 700 feet north of the W $\frac{1}{4}$ Corner Section 25-T76N-R16W; thence north following substantially the west quarter section line of Sections 25, 24, 13, and 12-T76N-R16W to a point approximately 1,300 feet east and 800 feet south of the NW Corner of Section 12-T76N-R16W; thence in a northeasterly direction through Sections 12 and 1-T76N-R16W to a point approximately 1,300 feet north of the S $\frac{1}{4}$ Corner of Section 1-T76N-R16W; thence north following substantially the center section line of Section 1-T76N-R16W, and Sections 36, 25, and 24-T77N-R16W to the south corporation line of New Sharon connecting with Main Street.

New Sharon:

Beginning on Main Street at the south corporation line; thence north on Main Street to Market Street; thence east on Market Street to the east corporation line.

Beginning again on the east corporation line of New Sharon connecting with Market Street; thence in an easterly direction through Sections 18, 17, 16, and 15-T77N-R15W to a point southwest of the center of said Section 15-T77N-R15W; thence curving in a northeasterly and northerly direction through said Section 15 to a point near the S $\frac{1}{4}$ Corner Section 10-T77N-R15W; thence in a northeasterly direction through Section 10 and 11-T77N-R15W to a point near the S $\frac{1}{4}$ Corner Section 2-T77N-R15W; thence north through said Section 2 to a point near the N $\frac{1}{4}$ Corner Section 2-T77N-R15W on the Mahaska-Poweshiek County line (S $\frac{1}{4}$ Corner Section 35-T78N-R15W, Poweshiek County).

COMMISSION ORDER

DIVISION: Planning & Research

COMMISSION ORDER NUMBER: PR-79-272

SUBMITTED BY: C.I. MacGillivray

MEETING DATE: 11-2-78

DISCUSSION/BACKGROUND:

Due to a review of our Primary Road System records, US 63 in Mahaska County should be deleted from the Primary Road System and the new description added should be officially included into the Primary Road System.

US 63 begins in the southeast corner of Mahaska County and travels in a northwesterly and northerly direction to the Mahaska-Poweshiek County line approximately 2 ½ miles north of New Sharon via the cities of Fremont, University Park, Oskaloosa and New Sharon, Iowa.

PROPOSAL/ACTION RECOMMENDATION:

Locate US 63 and its extensions in Mahaska County as follows:

Beginning at a point near the SE Corner of Section 36-T74N-R14W, Mahaska County (SW Corner of Section 31-T74N-R13W, Keokuk County)(NW Corner of Section 6-T73N-R13W, Wapello County); thence north along the Mahaska-Keokuk County line (see Keokuk County) to a point approximately 800 feet south of the NE Corner of Section 24-T74N-R14W, Mahaska County (NW Corner Section 19-T74N-R13W, Keokuk County); thence curving in a northwesterly direction to a point approximately 400 feet west of the NE Corner of Section 24-T74N-R14W; thence in a northwesterly direction through Section 13-T74N-R14W to the east corporation line of the City of Fremont, connecting with an unnamed street.

Fremont:

Beginning at the east corporation line connecting with an unnamed street; thence northwesterly and westerly to the west corporation line connecting with an unnamed street.

Beginning again on the west corporation line of the City of Fremont, connecting with an unnamed street; thence west following substantially the center section line of Sections 14, 15, 16, 17, and 18-T74N-R14W to a point approximately 800 feet east of the W $\frac{1}{4}$ Corner of Section 18-T74N-R14W; thence in a northwesterly direction through Sections 18-T74N-R14W; Sections 13, 12, 11, 2 and 3-T74N-R15W, and Section 34, 33, 28 and 29-T75N-R15W to the south corporation line of the City of University Park, connecting with an unnamed street.

University Park:

Beginning on the south corporation line connecting with an unnamed street; thence northwesterly to the west corporation line (east corporation line of the City of Oskaloosa) connecting with an unnamed street.

Oskaloosa:

Beginning on the east corporation line (west corporation line of the City of University Park) connecting with an unnamed street; thence northerly, westerly and northerly to the north corporation line connecting with an unnamed street.

Beginning again on the north corporation line of the City of Oskaloosa connecting with an unnamed street; thence north following substantially the east quarter section line of Sections 12 and 1-T75N-R16W to a point approximately 1300 feet east and 400 feet north of the S $\frac{1}{4}$ Corner Section 1-T75N-R16W; thence in a northerly and northwesterly direction through Section 1-T75N-R16W, and Section 36 and 25-T76N-R16W to a point approximately 1300 feet east and 700 feet north of the W $\frac{1}{4}$ Corner Section

25-T76N-R16W; thence north following substantially the west quarter section line of Sections 25, 24, 13, and 12-T76N-R16W to a point approximately 1300 feet east and 800 feet south of the NW Corner of Section 12-T76N-R16W; thence in a northeasterly direction through Sections 12 and 1-T76N-R16W to a point approximately 1300 feet north of the S $\frac{1}{4}$ Corner of Section 1-T76N-R16W; thence north following substantially the center section line of Section 1-T76N-R16W, and Sections 36, 25, and 24-T77N-R16W to the south corporation line of the City of New Sharon connecting with an unnamed street.

New Sharon:

Beginning on the south corporation line connecting with an unnamed street; thence northerly and easterly to the east corporation line, connecting with an unnamed street.

Beginning again on the east corporation line of the City of New Sharon connecting with an unnamed street; thence in an easterly direction through Section 18, 17, 16, and 15-T77N-R15W to a point southwest of the center of said Section 15-T77N-R15W; thence curving in a northeasterly and northerly direction through said Section 15 to a point near the S $\frac{1}{4}$ Corner Section 10-T77N-R15W; thence in a northeasterly direction through Section 10 and 11-T77N-R15W to a point near the S $\frac{1}{4}$ Corner Section 2-T77N-R15W; thence north through said Section 2 to a point near the N $\frac{1}{4}$ Corner Section 2-T77N-R15W on the Mahaska-Poweshiek County line (S $\frac{1}{4}$ Corner Section 35-T78N-R15W, Poweshiek County).

NOW, THEREFORE: Be it resolved that the Iowa Department of Transportation approve the location of US 63, Mahaska County, Iowa.

NOTE: To become effective upon the adoption of this resolution.

REVISED: 5-13-87

OFFICIAL DESCRIPTION CHANGE

COUNTY: Mahaska

ROUTE: US 63

APPROVAL DATE: 11-28-62

Beginning at a point near the SE Corner of Section 36-T74N-R14W, Mahaska County (SW Corner of Section 31-T74N-R13W, Keokuk County)(NW Corner of Section 6-T73N-R13W, Wapello County); thence north along the Mahaska-Keokuk County line to a point approximately 800 feet south of the NE Corner of Section 24-T74N-R14W, Mahaska County (NW Corner Section 19-T74N-R13W, Keokuk County); thence curving in a northwesterly direction to a point on the south side of the Minneapolis and St. Louis Railroad approximately 400 feet west of the NE Corner of Section 24-T74N-R14W; thence in a northwesterly direction along the south side of said railroad and substantially parallel thereto to the east corporation line of the Town of Fremont, connecting with an unnamed street.

Beginning again on the west corporation line of the Town of Fremont, connecting with Main Street; thence west following substantially the quarter section line to a point approximately 800 feet east of the W $\frac{1}{4}$ Corner of Section 18-T74N-R14W; thence in a northwesterly direction thru Section 18-T74N-R14W, Section 13, 12, 11, 2 and 3-T74N-R15W, and Section 34, 33, 28 and 29-T75N-R15W to the south corporation line of the Town of University Park, connecting with an unnamed street.

Beginning again on the west corporation line of the Town of University Park, connecting with an unnamed street; thence curving in a northerly direction to the south corporation line of the City of Oskaloosa, connecting with an unnamed street.

Beginning again on the north corporation line of the City of Oskaloosa connecting with Market Street; thence north following substantially the east quarter-quarter line of Section 12 and 1-T75N-R16W to a point approximately $\frac{1}{4}$ mile east and 400 feet north of the S $\frac{1}{4}$ Corner Section 1-T75N-R16W; thence in a northerly and northwesterly direction thru Section 1-T75N-R16W, and Section 36 and 25-T76N-R16W to a point approximately $\frac{1}{4}$ mile east and 700 feet north of the W $\frac{1}{4}$ Corner of Section 25-T76N-R16W; thence north following substantially the west quarter-quarter line of Section 25, 24, 13 and 12-T76N-R16W, to a point approximately $\frac{1}{4}$ mile east and 800 feet south of the NW Corner of Section 12-T76N-R16W; thence in a northeasterly direction to a point approximately $\frac{1}{4}$ mile north of the S $\frac{1}{4}$ Corner of Section 1-T76N-R16W; thence north following substantially the quarter section line to the south corporation line of the Town of New Sharon connecting with Main Street.

NOTE: To become effective one year after notice is given to the county that old location has reverted to the secondary road system.

OFFICIAL DESCRIPTION CHANGE

COUNTY: Mahaska

ROUTE: US 63

APPROVAL DATE: 11-28-62

Beginning again on the east corporation line of the Town of New Sharon connecting with Market Street; thence in an easterly direction through Section 18, 17, 16, and 15-T77N-R15W to a point southwest of the center of said Section 15-T77N-R15W; thence curving in a northeasterly and northerly direction to a point near the S $\frac{1}{4}$ Corner Section 10-T77N-R15W; thence in a northeasterly direction through Section 10 and 11-T77N-R15W to a point near the S $\frac{1}{4}$ Corner Section 2-T77N-R15W; thence north to a point near the N $\frac{1}{4}$ Corner Section 2-T77N-R15W on the Mahaska-Poweshiek County line (S $\frac{1}{4}$ Corner Section 35-T78N-R15W, Poweshiek County).

OFFICIAL DESCRIPTION CHANGE

COUNTY: Mahaska

CITY OF: University Park

ROUTE: US 63

APPROVAL DATE: 8-20-58

Commencing on an unnamed street at the south corporation line; thence northeasterly on said unnamed street to the west corporation line.

NOTE: Designation to become effective upon the completion and opening to traffic of Relocated US 63, more specifically Mahaska County Project FN-70.

OFFICIAL DESCRIPTION CHANGE

COUNTY: Mahaska

CITY OF: Oskaloosa

ROUTE: US 63

APPROVAL DATE: 8-20-58

Commencing on an unnamed street at the south corporation line; thence northerly on unnamed street to "A" Avenue; thence westerly on "A" Avenue to Market Street; thence northerly on Market Street to the north corporation line.

NOTE: Designation to become effective upon the completion and opening to traffic of Relocated US 63, more specifically Mahaska County Project FN-70.

OFFICIAL DESCRIPTION CHANGE

COUNTY: Mahaska

CITY OF: Fremont

ROUTE: US 63

APPROVAL DATE: 2-5-36

Commencing on Main Street at the west corporation line; thence easterly on Main Street to Harrison Street; thence southeasterly along the south side of the Minneapolis and St. Louis Railroad to the east corporation line.

OFFICIAL DESCRIPTION CHANGE

COUNTY: Mahaska

CITY OF: New Sharon

ROUTE: US 63

APPROVAL DATE: 2-5-36

Commencing on Main Street at the south corporation line; thence northerly on Main Street to Market Street; thence easterly on Market Street to the east corporation line.