

OFFICIAL DESCRIPTION CHANGE

OFFICE: Analytics

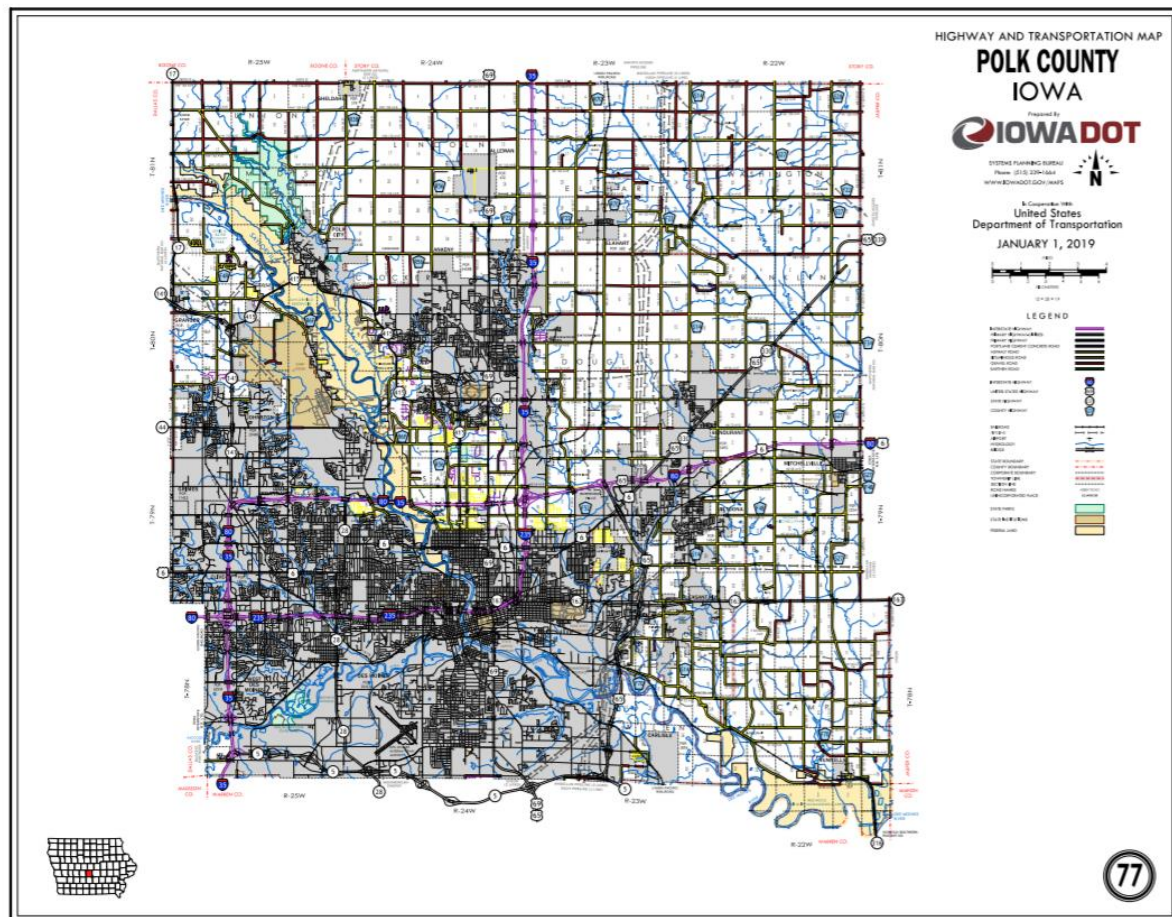
EFFECTIVE DATE: 06-27-2018

COUNTY: Polk

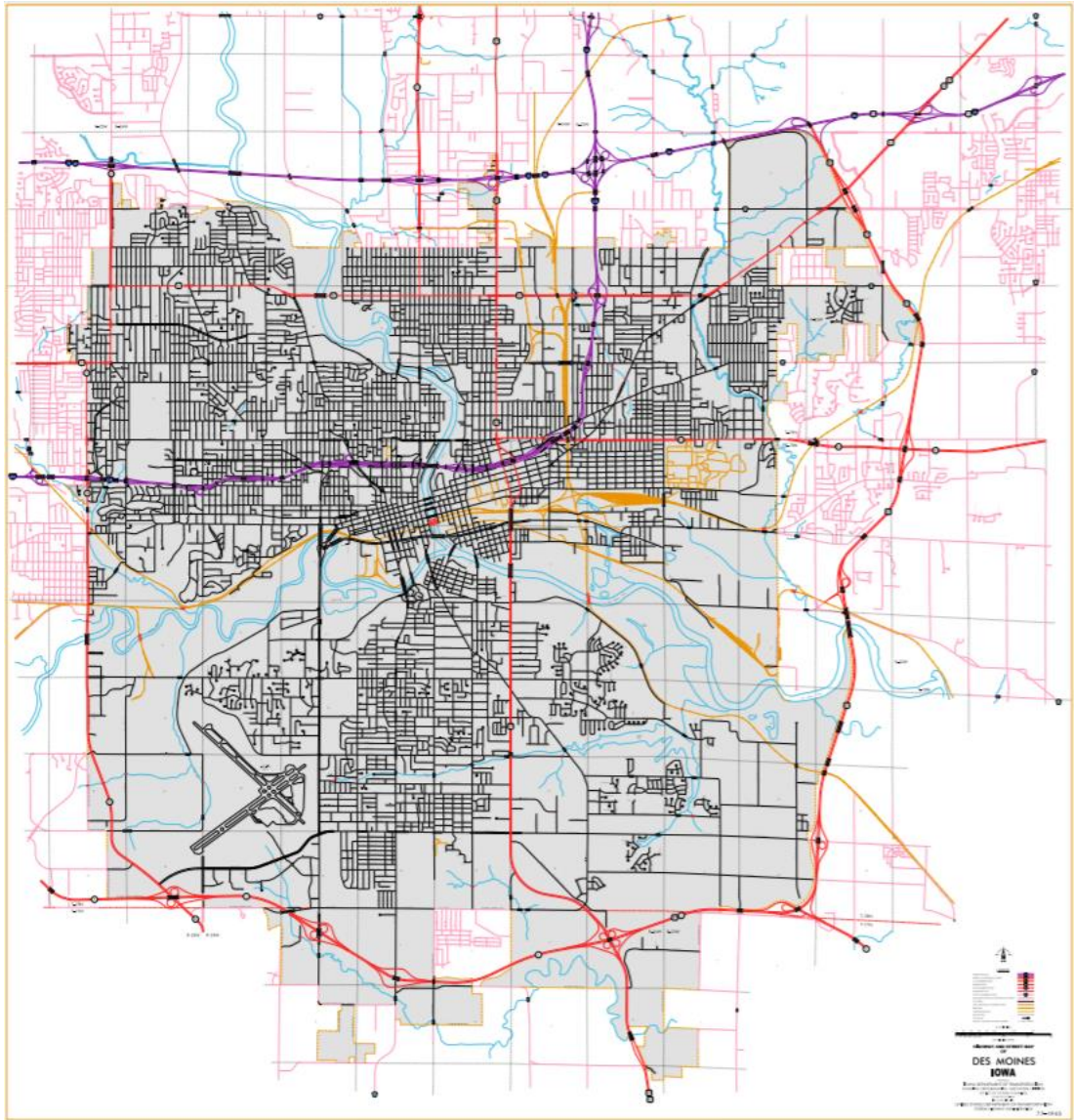
ROUTE: US 65

ENTERED BY: Paul Mauer

ENTERED DATE: 08-14-2020



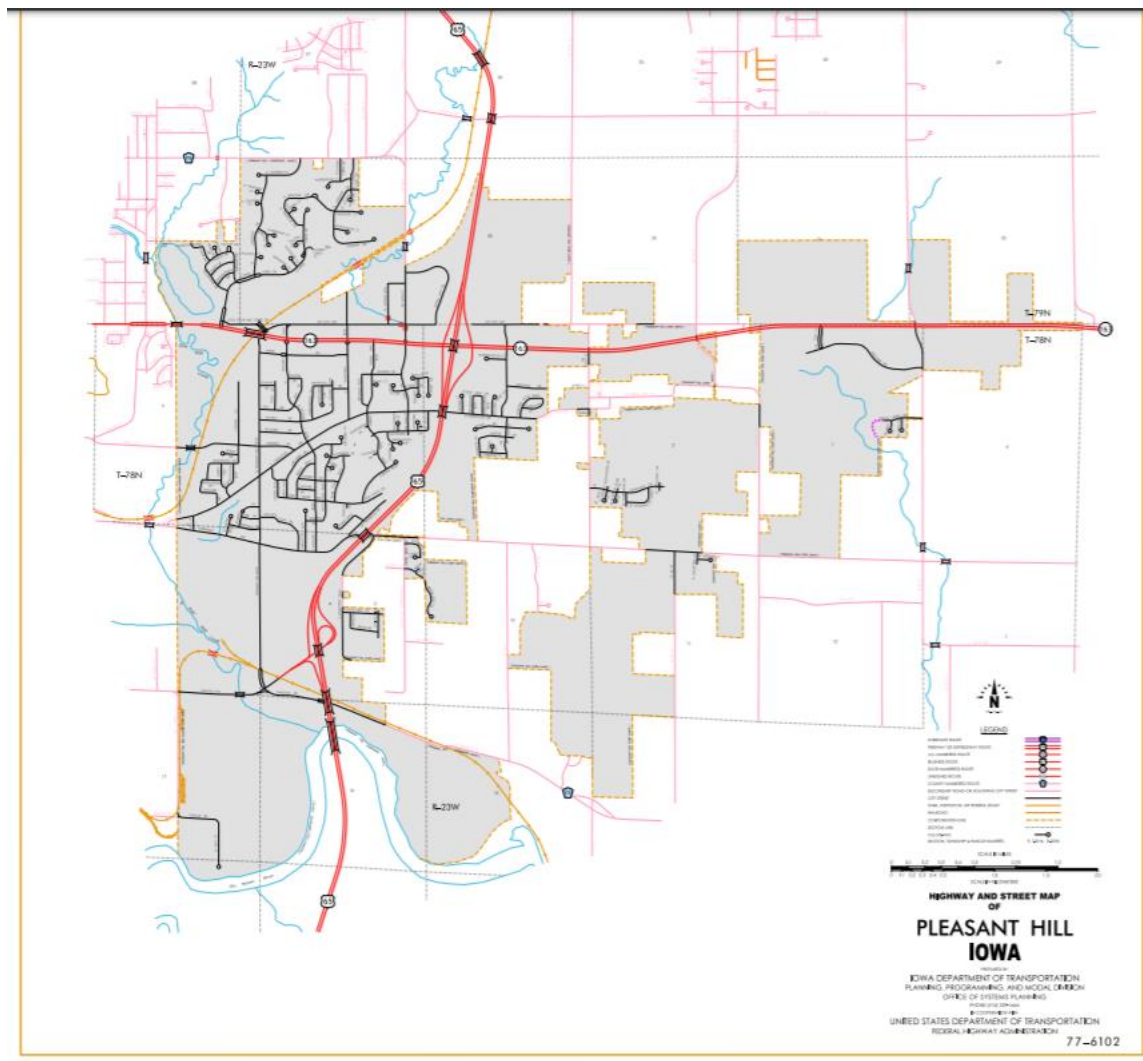
New Description – US 65 and its extensions in Polk County described as follows:



Des Moines:

Beginning at the Polk–Warren County line (south corporation line of Des Moines) approximately 840 feet west of the S $\frac{1}{4}$ Corner of Section 31–T78N–R23W, Polk County (N $\frac{1}{4}$ Corner of Section 6–T77N–R23W, Warren County) connecting with Iowa 5; thence in a northeasterly direction on Iowa 5 through Section 31–T78N–R23W to the east corporation line of Des Moines (approximately 1100 feet east and 290 feet north of the S $\frac{1}{4}$ Corner of Section 31–T78N–R23W).

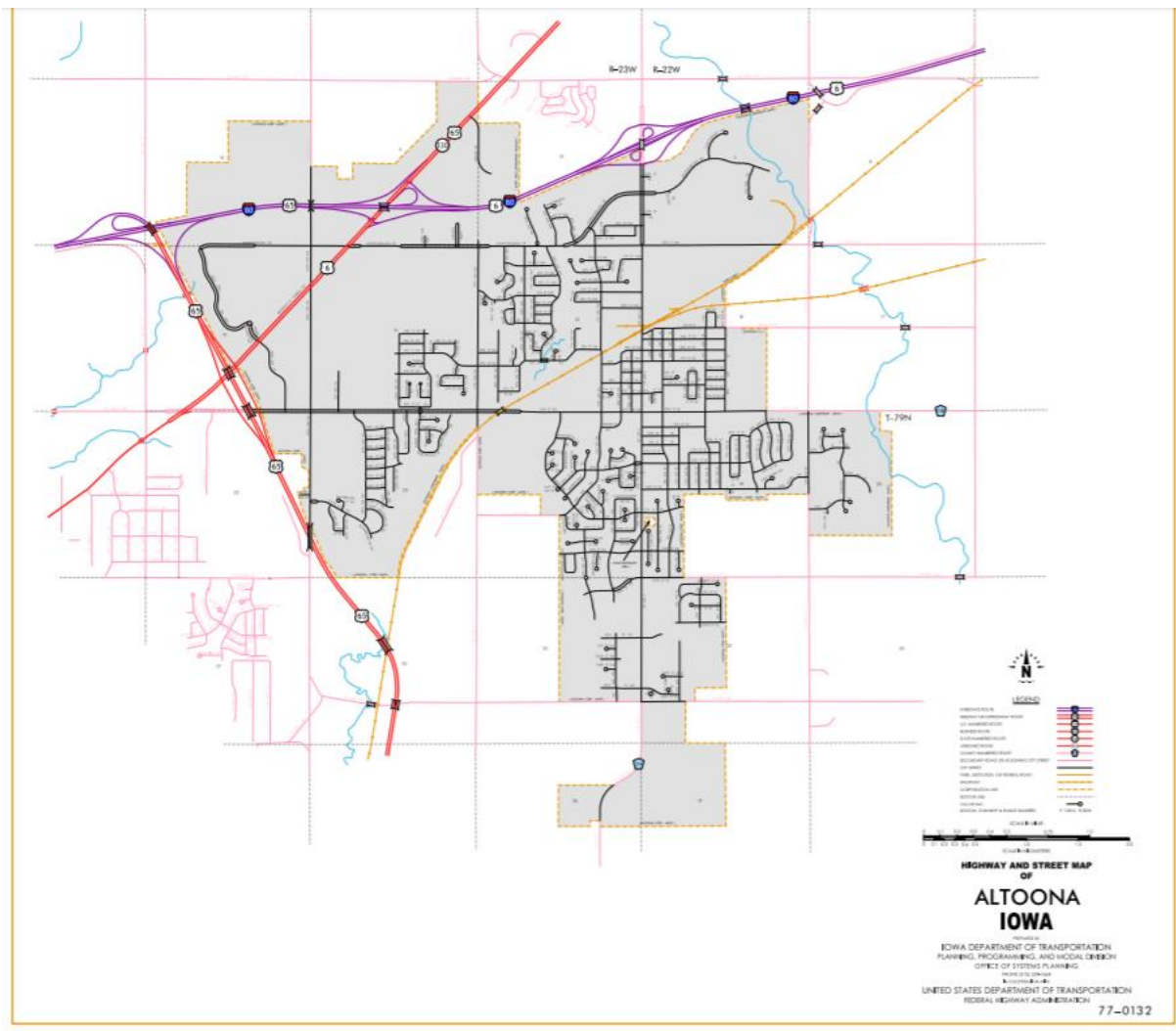
Beginning again on the west corporation line of Des Moines (approximately 1100 feet east and 290 feet north of the S $\frac{1}{4}$ Corner of Section 31-T78N-R23W) connecting with Iowa 5; thence in an easterly and northeasterly direction on Iowa 5 through Section 32-T78N-R23W to the junction of Iowa 5 (approximately 1300 feet west and 520 feet north of the SE Corner of Section 32-T78N-R23W); thence in a northeasterly, northerly, and northeasterly direction through Sections 32, 33, 28, and 21-T78N-R23W to a point near the N $\frac{1}{4}$ Corner of Section 21-T78N-R23W; thence northwesterly through Section 16-T78N-R23W to the south corporation line of Pleasant Hill (a point near the E $\frac{1}{4}$ Corner NW $\frac{1}{4}$ of Section 16-T78N-R23W).



Pleasant Hill:

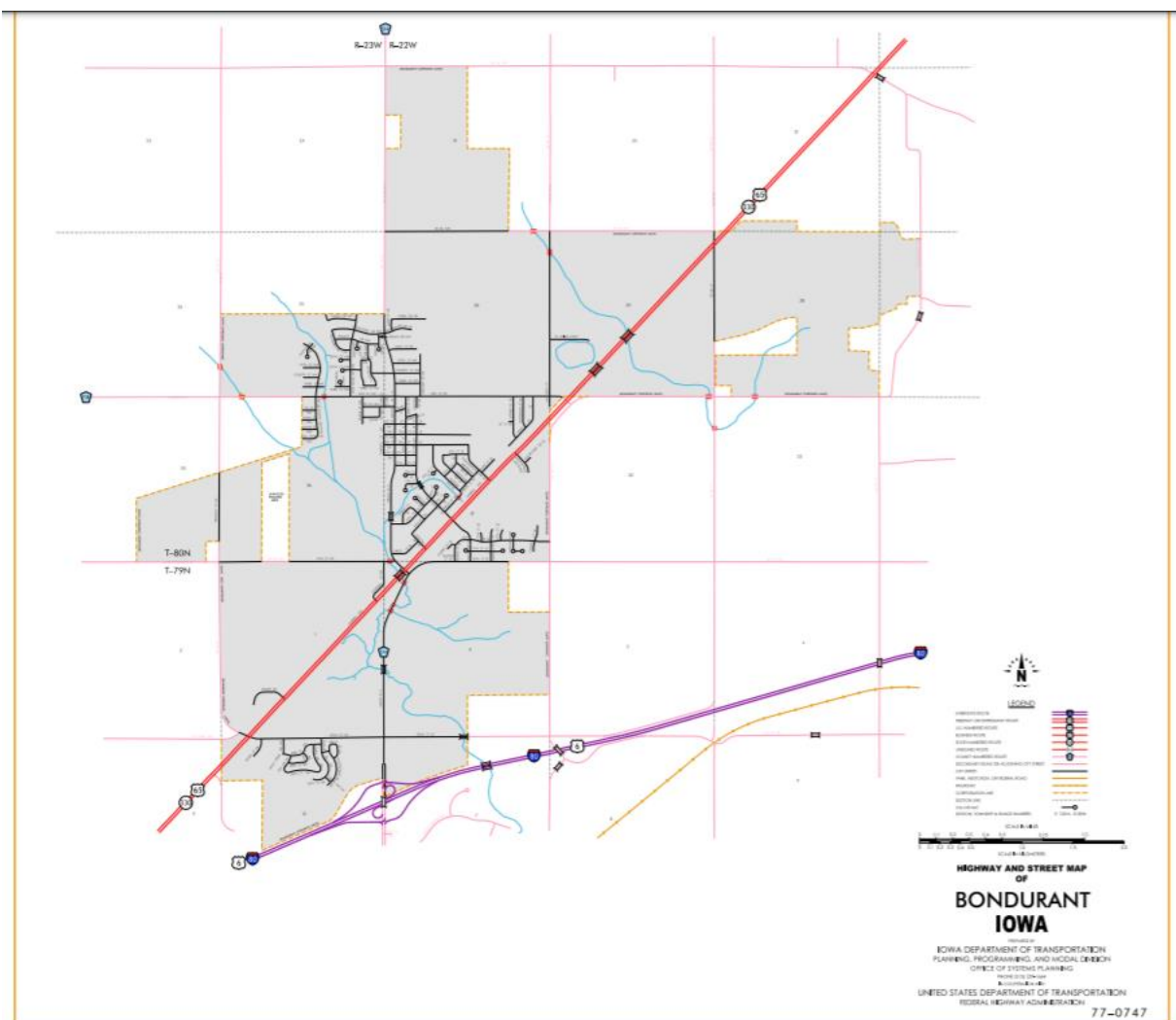
Beginning on the south corporation line (a point near the E ¼ Corner NW ¼ of Section 16-T78N-R23W); thence northerly, northeasterly, and northerly to the north corporation line (approximately 610 feet west of the Center of Section 35-T79N-R23W).

Beginning again on the north corporation line of Pleasant Hill (approximately 610 feet west of the Center of Section 35-T79N-R23W); thence in a northerly and northwesterly direction through Sections 35, 26, 22, and 15-T79N-R23W to the junction of Interstate 80; thence easterly on Interstate 80 to the west corporation line of Altoona (approximately 600 feet north and 370 feet east of the SW Corner of Section 10-T79N-R23W).



Altoona:

Beginning on the west corporation line (approximately 600 feet north and 370 feet east of the SW Corner of Section 10-T79N-R23W), connecting with Interstate 80; thence east on Interstate 80 to the junction of US 6/Hubbell Avenue; thence northwesterly on Hubbell Avenue to the east corporation line/west corporation line of Bondurant (approximately 730 feet south of the NW Corner of Section 12-T79N-R23W).



Bondurant:

Beginning on the west corporation line (approximately 730 feet south of the NW Corner of Section 12-T79N-R23W), connecting with Hubbell Avenue; thence northeasterly on Hubbell Avenue to the east corporation line.

Beginning again on the east corporation line of Bondurant connecting with Hubbell Avenue; thence northeasterly through Sections 21, 16, 15, 10, 11, 2, and 1-T80N-R22W to a point approximately 2290 feet north and 1080 feet east of the SW Corner of Section 1-T80N-R22W; thence northerly and northeasterly to the Polk-Jasper County Line at a point near the E ¼ Corner of Section 36-T81N-R22W, Polk County (W ¼ Corner of Section 31-T81N-R21W, Jasper County).

STAFF ACTION

OFFICE: Transportation Data

STAFF ACTION NUMBER: S-03-0771

SUBMITTED BY: Peggi Knight

SUBMITTAL DATE: 04-14-2003

TITLE: Official Description Change: US 65 in Polk County

DISCUSSION / BACKGROUND:

New Description – US 65 and its extensions in Polk County described as follows:

Des Moines:

Beginning at the Polk-Warren County line (south corporation line of Des Moines) approximately 840 feet west of the S ¼ Corner of Section 31-T78N-R23W, Polk County (N ¼ Corner of Section 6-T77N-R23W, Warren County) connecting with Iowa 5; thence in a northeasterly direction on Iowa 5 through Section 31-T78N-R23W to the east corporation line of Des Moines

(approximately 1100 feet east and 290 feet north of the S $\frac{1}{4}$ Corner of Section 31-T78N-R23W).

Beginning again on the west corporation line of Des Moines (approximately 1100 feet east and 290 feet north of the S $\frac{1}{4}$ Corner of Section 31-T78N-R23W) connecting with Iowa 5; thence in an easterly and northeasterly direction on Iowa 5 through Section 32-T78N-R23W to the junction of Iowa 5 (approximately 1300 feet west and 520 feet north of the SE Corner of Section 32-T78N-R23W); thence in a northeasterly, northerly, and northeasterly direction through Sections 32, 33, 28, and 21-T78N-R23W to a point near the N $\frac{1}{4}$ Corner of Section 21-T78N-R23W; thence northwesterly through Section 16-T78N-R23W to the south corporation line of Pleasant Hill (a point near the E $\frac{1}{4}$ Corner NW $\frac{1}{4}$ of Section 16-T78N-R23W).

Pleasant Hill:

Beginning on the south corporation line (a point near the E $\frac{1}{4}$ Corner NW $\frac{1}{4}$ of Section 16-T78N-R23W); thence northerly, northeasterly, and northerly to the north corporation line (approximately 610 feet west of the Center of Section 35-T79N-R23W).

Beginning again on the north corporation line of Pleasant Hill (approximately 610 feet west of the Center of Section 35-T79N-R23W); thence in a northerly and northwesterly direction through Sections 35, 26, 22, and 15-T79N-R23W to the junction of Interstate 80; thence easterly on Interstate 80 to the west corporation line of Altoona (approximately 600 feet north and 370 feet east of the SW Corner of Section 10-T79N-R23W).

Altoona:

Beginning on the west corporation line (approximately 600 feet north and 370 feet east of the SW Corner of Section 10-T79N-R23W), connecting with Interstate 80; thence east on Interstate 80 to the junction of US 6/Hubbell Avenue; thence northwesterly on Hubbell Avenue to the east corporation

line/west corporation line of Bondurant (approximately 730 feet south of the NW Corner of Section 12-T79N-R23W).

Bondurant:

Beginning on the west corporation line (approximately 730 feet south of the NW Corner of Section 12-T79N-R23W), connecting with Hubbell Avenue; thence northeasterly on Hubbell Avenue to the east corporation line (a point near the Center SW $\frac{1}{4}$ of Section 29-T80N-R22W).

Beginning again on the east corporation line of Bondurant (a point near the Center SW $\frac{1}{4}$ of Section 29-T80N-R22W), connecting with Hubbell Avenue; thence northeasterly through Sections 29, 28, 21, 16, 15, 10, 11, 2, and 1-T80N-R22W to a point approximately 2290 feet north and 1080 feet east of the SW Corner of Section 1-T80N-R22W; thence northerly and northeasterly to the Polk-Jasper County Line at a point near the E $\frac{1}{4}$ Corner of Section 36-T81N-R22W, Polk County (W $\frac{1}{4}$ Corner of Section 31-T81N-R21W, Jasper County).

PROPOSAL /ACTION RECOMMENDATION:

It is recommended that the old description of US 65 and its extension in Polk County be deleted and the new description be included in the Primary Road System.

STAFF ACTION

OFFICE: Transportation Data

STAFF ACTION NUMBER: S-03-0092

SUBMITTED BY: Peggi Knight

SUBMITTAL DATE: 07-30-2002

TITLE: Official Description Change: US 65 in Polk County

DISCUSSION / BACKGROUND:

New Description – US 65 and its extensions in Polk County described as follows:

Des Moines:

Beginning at the Polk–Warren County line (south corporation line of Des Moines) approximately 840 feet west of the S $\frac{1}{4}$ Corner of Section 31–T78N–R23W, Polk County (N $\frac{1}{4}$ Corner of Section 6–T77N–R23W, Warren County) connecting with Iowa 5; thence in a northeasterly direction on Iowa 5 through Section 31–T78N–R23W to the east corporation line of Des Moines (approximately 1100 feet east and 290 feet north of the S $\frac{1}{4}$ Corner of Section 31–T78N–R23W).

Beginning again on the west corporation line of Des Moines (approximately 1100 feet east and 290 feet north of the S $\frac{1}{4}$ Corner of Section 31–T78N–R23W) connecting with Iowa 5; thence in an easterly and northeasterly direction on Iowa 5 through Section 32–T78N–R23W to the junction of Iowa 5 (approximately 1300 feet west and 520 feet north of the SE Corner of Section 32–T78N–R23W); thence in a northeasterly, northerly, and northeasterly direction through Sections 32, 33, 28, and 21–T78N–R23W to a point near the N $\frac{1}{4}$ Corner of Section 21–T78N–R23W; thence northwesterly through Section 16–T78N–R23W to the south corporation line of Pleasant Hill (a point near the E $\frac{1}{4}$ Corner NW $\frac{1}{4}$ of Section 16–T78N–R23W).

Pleasant Hill:

Beginning on the south corporation line (a point near the E $\frac{1}{4}$ Corner NW $\frac{1}{4}$ of Section 16–T78N–R23W); thence northerly, northeasterly, and northerly to the north corporation line (approximately 610 feet west of the Center of Section 35–T79N–R23W).

Beginning again on the north corporation line of Pleasant Hill (approximately 610 feet west of the Center of Section 35–T79N–R23W); thence in a northerly and northwesterly direction through Sections 35, 26, 22, and 15–T79N–R23W

to the junction of Interstate 80; thence easterly on Interstate 80 to the west corporation line of Altoona (approximately 600 feet north and 370 feet east of the SW Corner of Section 10-T79N-R23W).

Altoona:

Beginning on the west corporation line (approximately 600 feet north and 370 feet east of the SW Corner of Section 10-T79N-R23W), connecting with Interstate 80; thence east on Interstate 80 to the junction of US 6/Hubbell Avenue; thence northwesterly on Hubbell Avenue to the east corporation line/west corporation line of Bondurant (approximately 730 feet south of the NW Corner of Section 12-T79N-R23W).

Bondurant:

Beginning on the west corporation line (approximately 730 feet south of the NW Corner of Section 12-T79N-R23W), connecting with Hubbell Avenue; thence northeasterly on Hubbell Avenue to the east corporation line (a point near the Center SW $\frac{1}{4}$ of Section 29-T80N-R22W).

Beginning again on the east corporation line of Bondurant (a point near the Center SW $\frac{1}{4}$ of Section 29-T80N-R22W), connecting with Hubbell Avenue; thence northeasterly through Sections 29, 28, 21, 16, 15, 10, 11, 2, and 1-T80N-R22W to a point approximately 2290 feet north and 1080 feet east of the SW Corner of Section 1-T80N-R22W; thence northerly and northeasterly to the Polk-Jasper County Line at a point near the E $\frac{1}{4}$ Corner of Section 36-T81N-R22W, Polk County (W $\frac{1}{4}$ Corner of Section 31-T81N-R21W, Jasper County).

STAFF ACTION

OFFICE: Transportation Data

STAFF ACTION NUMBER: S-97-1157

SUBMITTED BY: Patrick R. Cain

SUBMITTAL DATE: 04-10-97

TITLE: Official Description Change: US 65 in Polk County

DISCUSSION/BACKGROUND:

This staff action involves no change in location, only a change in wording at junctions with US 6.

New Description – US 65 and its extensions in Polk County described as follows:

Beginning on the Polk-Warren County line near the SE Corner Section 35-T78N-R24W, Polk County (NE Corner Section 2-T77N-R24W, Warren County); thence in a general northwesterly direction through Section 35-T78N-R24W to the south corporation line of Des Moines, connecting with an unnamed street.

Des Moines:

Beginning on an unnamed street at the south corporation line; thence northwest on an unnamed street to SE 14th Street; thence north on SE 14th Street to unnamed street (begin one-way northbound); thence northeast on unnamed street to E 15th Street; thence north to E 15th Street to unnamed street; thence northwest on unnamed street to E 14th Street (end one-way northbound); thence north on E 14th Street to University Avenue (junction US 65, 69 and Iowa 163); thence east on University Avenue to the east corporation line of Des Moines (west corporation line of Pleasant Hill).

Also

Beginning at unnamed street on E 14th Street (begin one-way southbound); thence south on E 14th Street to unnamed street (end one-way southbound).

Pleasant Hill:

Beginning on University Avenue at the west corporation line of Pleasant Hill

(east corporation line of Des Moines); thence east along University Avenue until connecting with an unnamed street; thence southeast and east to the east junction of Iowa 163; thence north on unnamed street to north corporation line of Pleasant Hill.

Beginning again at the north corporation line of Pleasant Hill connecting with unnamed street; thence north through Sections 35 and 26 to near Center Section 26-T79N-R23W; thence northwest through Sections 26, 23, 22, and Section 15-T79N-R23W to the west corporation line of Altoona (Intersection of US 6).

Altoona:

Beginning again on the west corporation line of Altoona connecting with an unnamed street; thence northwest following the west corporation line to the north corporation line of Altoona (west junction of Interstate 80).

Beginning again at the north corporation line of Altoona; thence easterly on Interstate 80 through Sections 10 and 11 to near E $\frac{1}{4}$ Corner SW $\frac{1}{4}$ of Sections 11-T79N-R23W (east junction of Interstate 80 and junction of US 6); thence northeasterly through Sections 11, 12 and 1-T79N-R23W to the south corporation line of Bondurant, connecting with an unnamed street.

Bondurant:

Beginning on unnamed street at the south corporation line; thence northeast on unnamed street to the east corporation line.

Beginning again on the east corporation line of Bondurant connecting with an unnamed street; thence northeast through Sections 32, 29, 28, 21, 16, 15, 10, 11, 2 and 1-T80N-R22W and Section 36-T81N-R22W to the Polk-Jasper County line at a point approximately 183 meters (600 feet) north of the SE Corner Section 36-T81N-R22W, Polk County (SW Corner Section 31-T81N-R21W, Jasper County).

PROPOSAL/ACTION RECOMMENDATION:

It is recommended to approve revising the description of US 65 in Polk County to include the attached new description in the Primary Road System.

STAFF ACTION

OFFICE: Transportation Data

SUBMITTED BY: Patrick R. Cain

SUBMITTAL DATE: 07-23-96

TITLE: Official Description Change: US 65 in Polk County

DISCUSSION/BACKGROUND:

Due to the relocation of US 65 in Polk County on December 21, 1994, the official description of this route should be revised to reflect the new alignment.

At the same time the old section of US 65 between the new junction of US 6/56 northeasterly to the Interstate 80 interchange went back to Polk County and the City of Altoona.

New Description – US 65 and its extensions in Polk County described as follows:

Beginning on the Polk–Warren County line near the SE Corner Section 35–T78NR24W, Polk County (NE Corner Section 2–T77N–R24W, Warren County); thence in a general northwesterly direction through Section 35–T78N–R24W to the south corporation line of Des Moines, connecting with an unnamed street.

Des Moines:

Beginning on an unnamed street at the south corporation line; thence northwest on an unnamed street to SE 14th Street; thence north on SE 14th Street to unnamed street (begin one-way northbound); thence northeast on unnamed street to E 15th Street; thence north on E 15th Street to unnamed street; thence northwest on unnamed street to E 14th Street (end one-way northbound); thence north on E 14th Street to University Avenue (junction US

65, 69 and Iowa 163); thence east on University Avenue to the east corporation line of Des Moines (west corporation line of Pleasant Hill).

Also

Beginning at unnamed street on E 14th Street (begin one-way southbound); thence south on E 14th Street to unnamed street (end one-way southbound).

Pleasant Hill:

Beginning on University Avenue at the west corporation line of Pleasant Hill (east corporation line of Des Moines); thence east along University Avenue until connecting with an unnamed street; thence southeast and east to the east junction of Iowa 163; thence north on unnamed street to north corporation line of Pleasant Hill.

Beginning again at the north corporation line of Pleasant Hill connecting with unnamed street; thence north through Sections 35 and 26 to near Center Section 26-T79N-R23W; thence northwest through Sections 26, 23, 22, and Section 15-T79NR23W to the west corporation line of Altoona (junction of US 6).

Altoona:

Beginning again at the west corporation line of Altoona on unnamed street; thence northwest following the west corporation line to the north corporation line of Altoona (west junction of Interstate 80 and US 6).

Beginning again at the north corporation line of Altoona; thence easterly on Interstate 80 through Sections 10 and 11 to near E $\frac{1}{4}$ corner SW $\frac{1}{4}$ of Sections 11-T79N-R23W (east junction of Interstate 80 and US 6); thence northeasterly through Sections 11, 12 and 1-T79N-R23W to the south corporation line of Bondurant, connecting with an unnamed street.

Bondurant:

Beginning on unnamed street at the south corporation line; thence northeast on unnamed street to the east corporation line.

Beginning again on the east corporation line of Bondurant connecting with an unnamed street; thence northeast through Sections 32, 29, 28, 21, 16, 15, 10, 11, 2 and 1-T80N-R22W and Section 36-T81N-R22W to the Polk-Jasper County line at a point approximately 600 feet north of the SE Corner Section 36-T81N-R22W, Polk County (SW Corner Section 31-T81N-R21W, Jasper County).

PROPOSAL/ACTION RECOMMENDATION:

It is recommended to approve revising the description of US 65 in Polk County to include the attached new description in the Primary Road System.

OFFICIAL DESCRIPTION CHANGE

COUNTY: Polk

ROUTE: US 65

STAFF ACTION NUMBER: S-87-1518

APPROVAL DATE: 5-13-87

New Description – US 65 and its extensions in Polk County described as follows:

Beginning on the Polk-Warren County line near the SE Corner Section 35-T78N-R24W, Polk County (NE Corner Section 2-T77N-R24W, Warren County); thence in a general northwesterly direction through Section 35-T78N-R24W to the east corporation line of Des Moines, connecting with an unnamed street.

Des Moines:

Beginning on an unnamed street at the east corporation line; thence northwest an unnamed street to SE 14th Street; thence north on SE 14th Street to Johnson Street (begin one-way northbound); thence northeast on Johnson Street to E 15th Street; thence north on E 15th Street to unnamed street; thence northwest on unnamed street to E 14th Street (end one-way northbound); thence north on E 14th Street to Euclid Avenue; thence east on Euclid Avenue to Frederick M Hubbell Avenue; thence northeast on Frederick M Hubbell Avenue to the north corporation line.

Also

Beginning at unnamed street on E 14th Street (begin one-way southbound); thence south on E 14th Street to Johnson Street (end one-way southbound).

Beginning again on the north corporation line of Des Moines connecting with Frederick M Hubbell Avenue; thence northeast through Sections 21, 22 and 15-T79N-R23W to the west corporation line of Altoona connecting with an unnamed street.

Altoona:

Beginning on the west corporation line connecting with an unnamed street; thence northeast to the north corporation line, connecting with an unnamed street.

Beginning again on the north corporation line of Altoona connecting with an unnamed street; thence northeast through Sections 11 (Interstate 80 interchange), 12 and 1-T79N-R23W to the south corporation line of Bondurant, connecting with an unnamed street.

Bondurant:

Beginning on unnamed street at the south corporation line; thence northeast on unnamed street to the east corporation line.

Beginning again on the east corporation line of Bondurant connecting with an unnamed street; thence northeast through Sections 32, 29, 28, 21, 16, 15, 10, 11, 2 and 1-T80N-R22W and Section 36-T81N-R22W to the Polk-Jasper County line at a point approximately 600 feet north of the SE Corner Section 36-T81N-R22W, Polk County (SW Corner Section 31-T81N-R21W, Jasper County).

COMMISSION ORDER

DIVISION: Planning & Research

COMMISSION ORDER NUMBER: PR-79-272

SUBMITTED BY: C.I. MacGillivray

MEETING DATE: 11-2-78

TITLE: US 65, Polk County, Iowa

DISCUSSION/BACKGROUND:

Due to a review of our Primary Road System records US 65 in Polk County should be deleted and the new description added should be officially included into the Primary System.

US 65 begins on the Polk-Warren County line approximately 5 miles west of Carlisle, and travels generally northwesterly and northeasterly via Des Moines, Altoona and Bondurant to the Polk-Jasper County line approximately 6 miles south of the NE Corner of Polk County, Iowa.

PROPOSAL/ACTION RECOMMENDATION:

Locate US 65 and its extensions in Polk County as follows;

Beginning on the Polk-Warren County line near the SE Corner Section 35-T78N-R24W, Polk County (NE Corner Section 2-T77N-R44W, Warren County); thence in a general northwesterly direction through Section 35-T78N-R24W to the east corporation line of the City of Des Moines connecting with an unnamed street.

Des Moines:

Beginning on the east corporation line connecting with an unnamed street; thence northerly, easterly and northeasterly to the east corporation line connecting with an unnamed street.

Also

Beginning at Fremont Street on E 14th Street (begin one-way southbound); thence south on E 14th Street to Vine Street (end one-way southbound).

Beginning again on the east corporation line of the City of Des Moines connecting with an unnamed street; thence in a northeasterly direction through Sections 21, 22 and 15-T79N-R23W to the west corporation line of the City of Altoona connecting with an unnamed street.

Altoona:

Beginning on the west corporation line connecting with an unnamed street; thence northeasterly to the north corporation line connecting with an unnamed street.

Beginning again on the north corporation line of the City of Altoona connecting with an unnamed street; thence in a northeasterly direction through Sections 11 (Interstate 80 interchange), 12 and 1-T79N-R23W to the south corporation line of the City of Bondurant connecting with an unnamed street.

Bondurant:

Beginning on the south corporation line connecting with an unnamed street; thence northeasterly to the east corporation line connecting with an unnamed street.

Beginning again on the east corporation line of the City of Bondurant connecting with an unnamed street; thence northeasterly through Sections 32, 29, 28, 21, 16, 15, 10, 11, 2 and 1-T80N-R22W and Section 36-T81N-R22W to the Polk-Jasper County line at a point approximately 600 feet north of the SE Corner Section 36-T81N-R22W, Polk County (SW Corner Section 31-T81N-R21W, Jasper County).

NOW, THEREFORE: Be it resolved that the Iowa Department of Transportation approve the location of US 65 in Polk County, Iowa.

NOTE: To become effective upon the adoption of this resolution.

REVISED: 5-13-87

COMMISSION RESOLUTION

DIVISION: Planning & Research

COMMISSION ORDER NUMBER: 74-498

SUBMITTED BY: Gene R. Mills

MEETING DATE: 5-1-74

TITLE: Approving the location of US 65 and its extensions in Polk County, Iowa

Locate US 65 and its extensions in Polk County, Iowa as follows:

Beginning at the Polk-Warren County line near the SE Corner Section 35-T78N-R24W, Polk County (NE Corner Section 2-T77N-R24W, Warren County); thence northwesterly to the east corporation line of the City of Des Moines connecting with an unnamed street.

Des Moines:

Commencing on unnamed street at the east corporation line; thence northwesterly to SE 14th Street; thence northerly on SE 14th Street to Vine Street (begin one-way northbound); thence northeasterly to E 15th Street; thence northerly on E 15th Street to Walker Street; thence northwesterly to E 14th Street (end one-way northbound); thence north on E 14th Street to Euclid Avenue; thence east on Euclid Avenue to Frederick M Hubbell Avenue; thence northeasterly on Frederick M Hubbell Avenue to the north corporation line.

Also

Commencing at Fremont Street on E 14th Street (begin one-way southbound); thence south on E 14th Street to Vine Street (end one-way southbound).

Beginning again on the east corporation line of the City of Des Moines connecting with Frederick M Hubbell Avenue; thence in a northeasterly direction through Sections 21, 22, 15, 14, 11, and 12-T79N-R23W to the south corporation line of the Town of Bondurant connecting with an unnamed street.

Bondurant

Commencing on unnamed street at the south corporation line; thence northeasterly on unnamed street to the east corporation line.

Beginning again on the east corporation line of the Town of Bondurant connecting with an unnamed street; thence in a northeasterly direction through Section 32, 29, 28, 21, 16, 15, 10, 11, 2 and 1-T80N-R22W and Section 36-T81N-R22W to the Polk-Jasper County line at a point approximately 600 feet north of the SE Corner Section 36T81N-R22W, Polk County (SW Corner Section 31-T81N-R21W, Jasper County).

NOW, THEREFORE: Be it resolved that the Iowa State Highway Commission approve the location of US 65 and its extensions in Polk County, Iowa.

Note: To become effective upon adoption of this resolution.

OFFICIAL DESCRIPTION CHANGE

COUNTY: Polk

ROUTE: US 65

APPROVAL DATE: 7-28-42

Beginning at the Polk-Warren County line at a point near the SE Corner Section 35-T78-R24 Polk County (NW Corner Section 1-T77-R24 Warren County); thence northwesterly through Section 35-T78-R24 to the east corporation line of the City of Des Moines connecting with E 14th Street.

Beginning again on the east corporation line of the City of Des Moines, connecting with Frederick M Hubbell Avenue; thence in a northeasterly direction through Section 21, 22, 15, 14, 11, 12, and 1-T79-R23 to the south corporation line of the Town of Bondurant connecting with an unnamed street.

Beginning again on the east corporation line of the Town of Bondurant, connecting with an unnamed street; thence in a northeasterly direction through Section 32, 29, 28, 21, 16, 15, 10, 11, 2 and 1-T80-R22 and Section 36-T81-R22 to the Polk-Jasper County line at a point approximately 600 feet north of the SE Corner Section 36-T81-R22 Polk County (SW Corner Section 31-T81-R21 Jasper County).

OFFICIAL DESCRIPTION CHANGE

COUNTY: Polk

CITY OF: Des Moines

ROUTE: US 65

APPROVAL DATE: 7-28-42

Commencing on unnamed street at the east corporation line; thence northwesterly and northerly on E 14th Street to Euclid Avenue; thence easterly on Euclid Avenue to Frederick M Hubbell Avenue; thence northeasterly on Frederick M Hubbell Avenue to the east corporation line.

OFFICIAL DESCRIPTION CHANGE

COUNTY: Polk

CITY OF: Bondurant

ROUTE: US 65

APPROVAL DATE: 1-7-41

Commencing on unnamed street at the south corporation line; thence northeasterly on unnamed street to the east corporation line.