

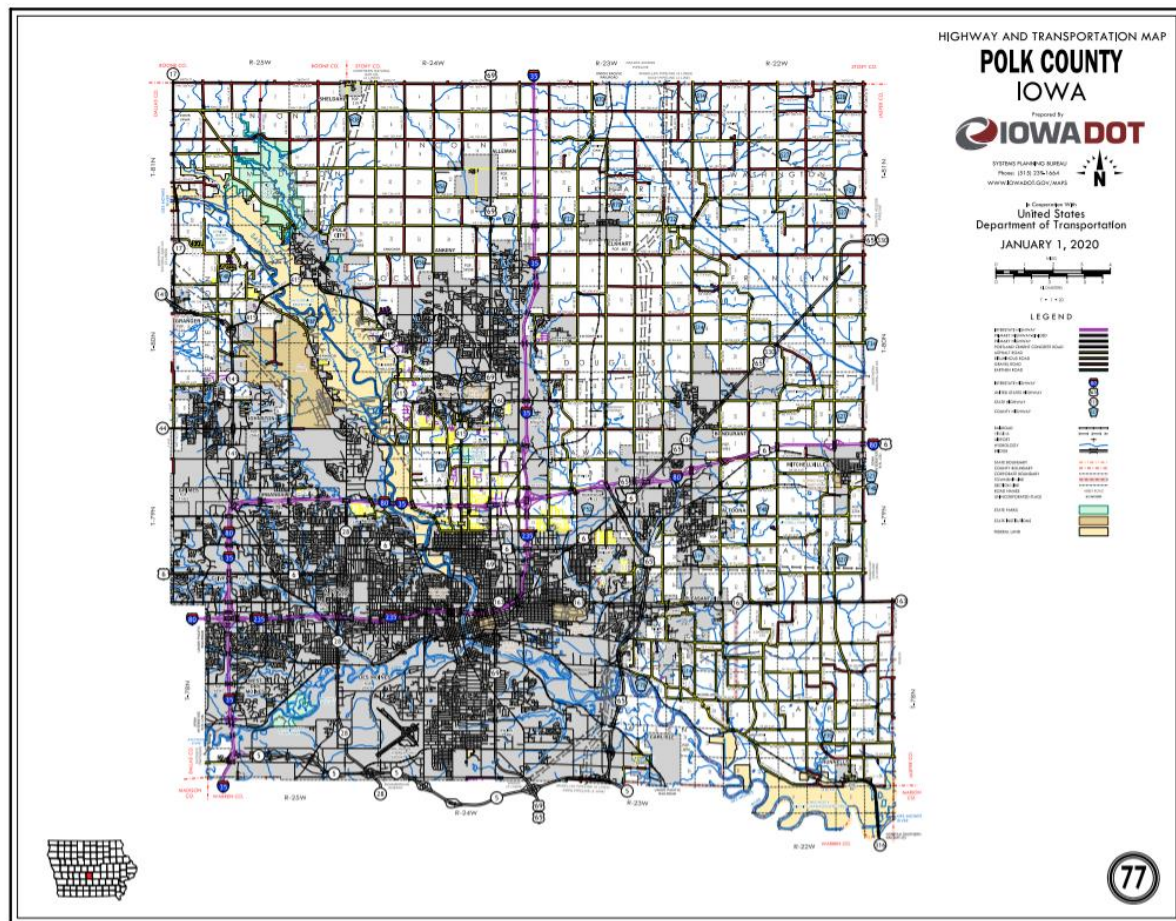
OFFICIAL DESCRIPTION CHANGE

OFFICE: Research and Analytics

EFFECTIVE DATE: 1-6-2021

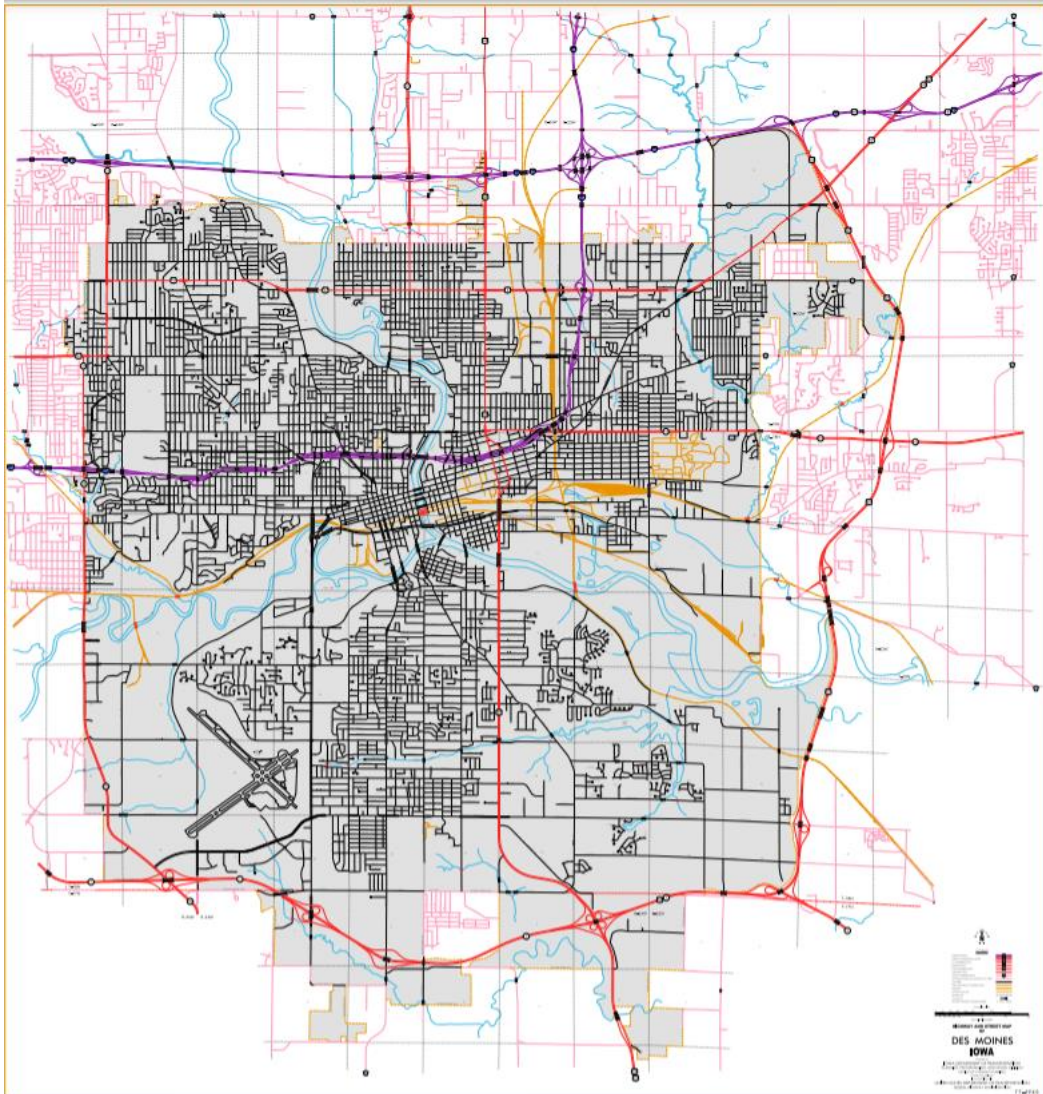
ENTERED BY: Paul Mauer

ENTERED DATE: 2-3-2022



New Description – US 69 and its extensions in Polk County described as follows:

Beginning on the Polk–Warren County line near the SE Corner Section 35–T78N–R24W, Polk County (NE Corner Section 2–T77N–R24W, Warren County); thence northwest through Section 35–T78N–R24W to the east corporation line of Des Moines, connecting with an unnamed street.



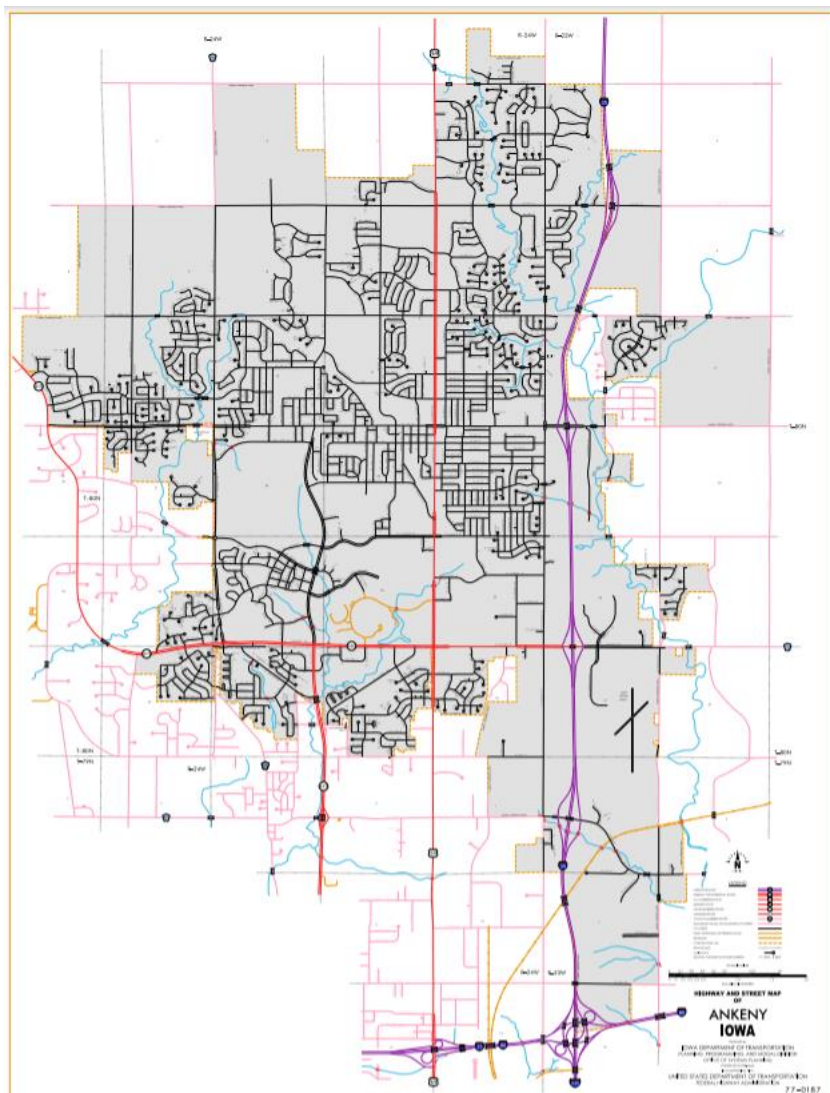
Des Moines:

Beginning on an unnamed street at the east corporation line; thence northwest an unnamed street to SE 14th Street; thence north on SE 14th Street to Johnson Street (begin one-way northbound); thence northeast on Johnson Street to E 15th Street; thence north on E 15th Street to an unnamed street; thence northwest on unnamed street to E 14th Street (end one-way northbound); thence north on E 14th Street to the north corporation line.

Also

Commencing at unnamed street on E 14th Street (begin one-way southbound) then south on E 14th Street to Johnson Street (end one-way southbound).

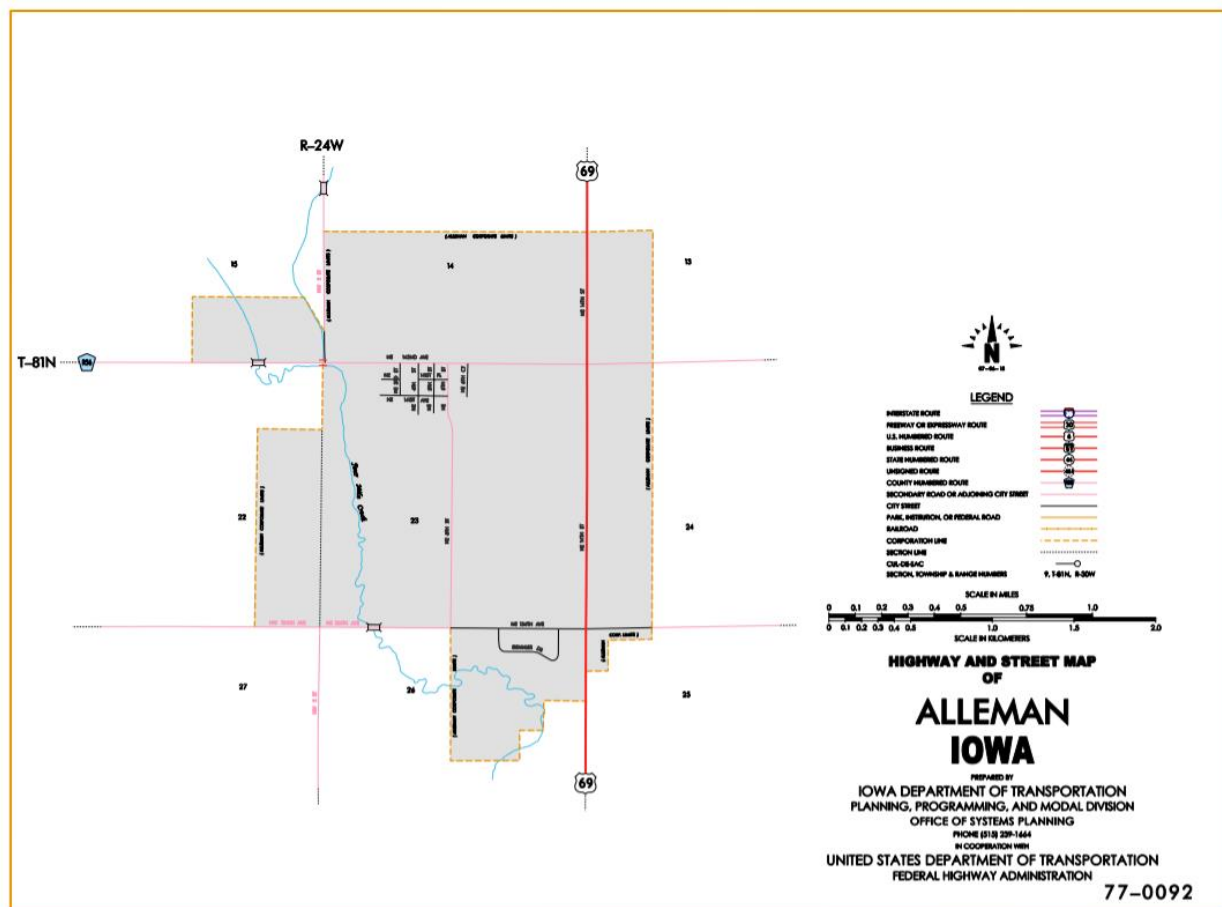
Beginning again on the north corporation line of Des Moines connecting with E 14th Street; thence north following substantially the section line of Sections 24, 13 (junction Interstate 35 and 80), 12 and 1-T79N-R24W and Section 36-T80N-R24W to the south corporation line of Ankeny connecting with S Ankeny Boulevard.



Ankeny:

Beginning on S Ankeny Boulevard at the south corporation line; thence north on S Ankeny Boulevard to N Ankeny Boulevard; thence north an N Ankeny Boulevard to the north corporation line.

Beginning again on the north corporation line of Ankeny connecting with N Ankeny Boulevard.; thence north following substantially the section line of Section 25-T81N-R24W to the south corporation line of Alleman, connecting with NE 14th Street.



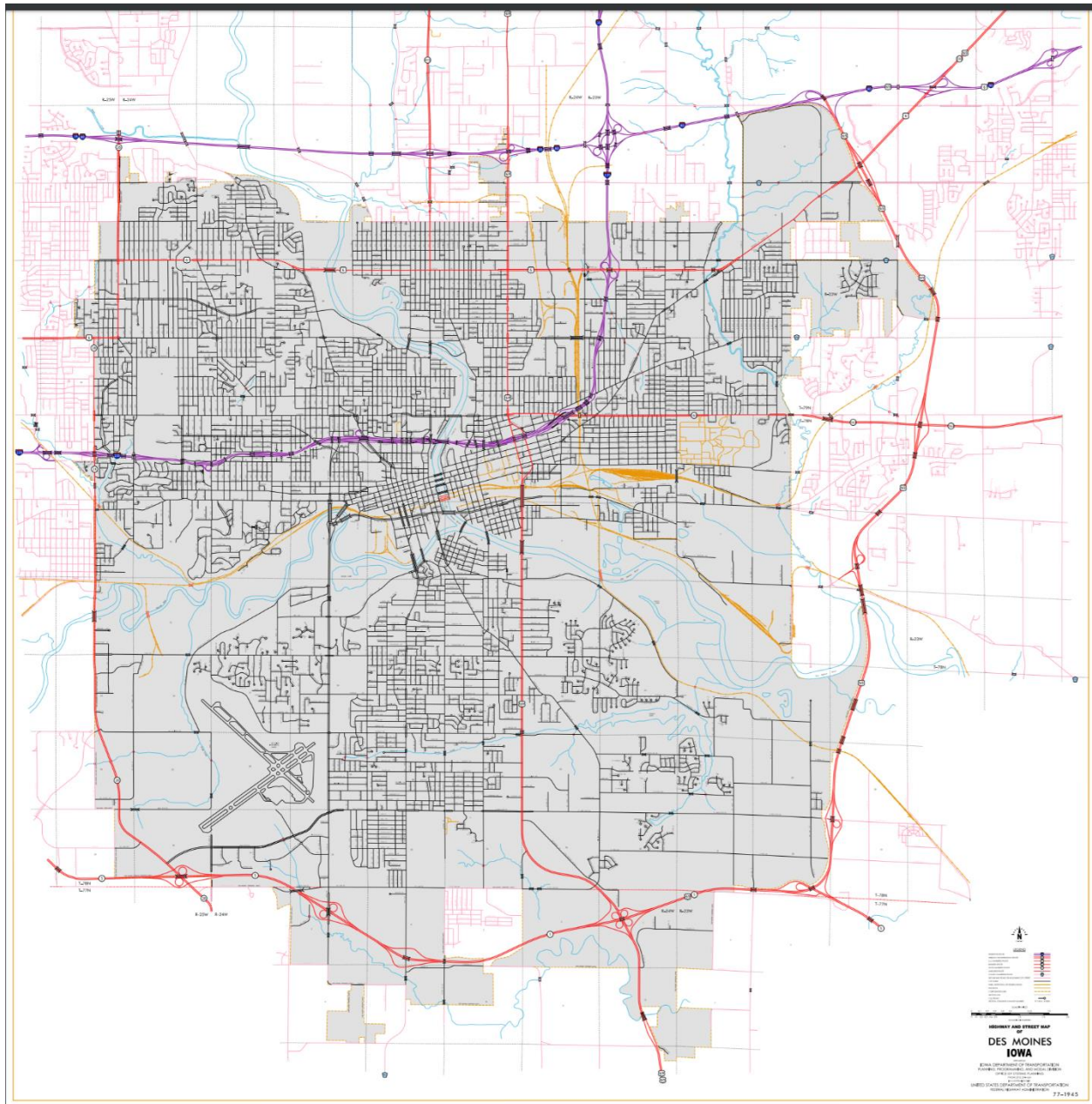
Alleman:

Beginning on NE 14th Street at the south corporation line; thence north on NE 14th Street to the north corporation line.

ENTERED DATE: 12-19-2019



New Description – US 69 and its extensions in Polk County described as follows:



Des Moines:

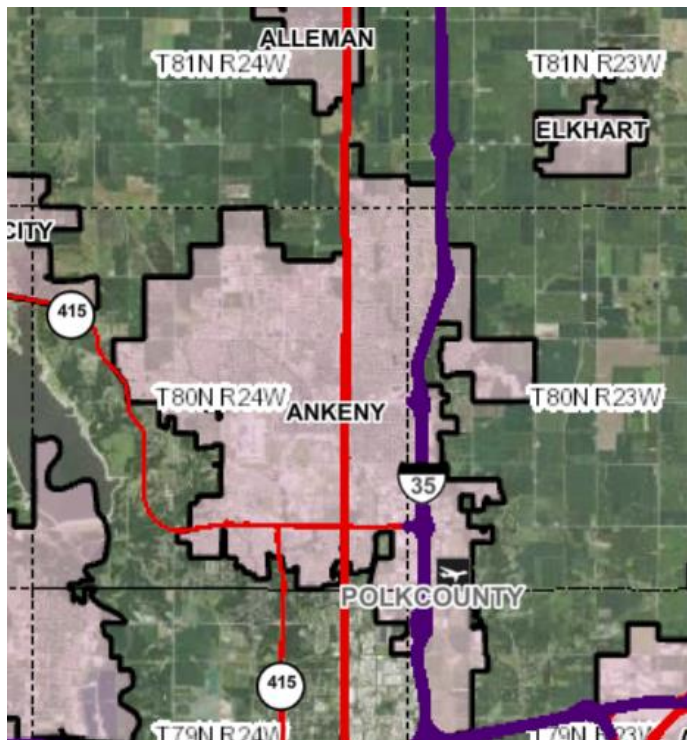
Beginning on the Polk–Warren County line near the SE Corner Section 35–T78N–R24W, Polk County (NE Corner Section 2–T77N–R24W, Warren County); thence northwest through Section 35–T78N–R24W, connecting with SE 14th Street; thence north on SE 14th Street to Johnson Court (begin one-way

northbound); thence northeast on Johnson Court to E 15th Street; thence north on E 15th Street (junction Interstate 235) to Johnson Court; thence northwest on Johnson Court to E 14th Street (end one-way northbound); thence north on E 14th Street to the north corporation line.

Also

Commencing on E 14th Street (begin one-way southbound) then south on E 14th Street to SE 14th Street then south and southeast on SE 14th Street to the junction of SE 14th Street; then southeast through Section 35-T78N-R24W to the Polk-Warren County line near the SE Corner Section 35-T78N-R24W, Polk County (NE Corner Section 2-T77N-R24W, Warren County).

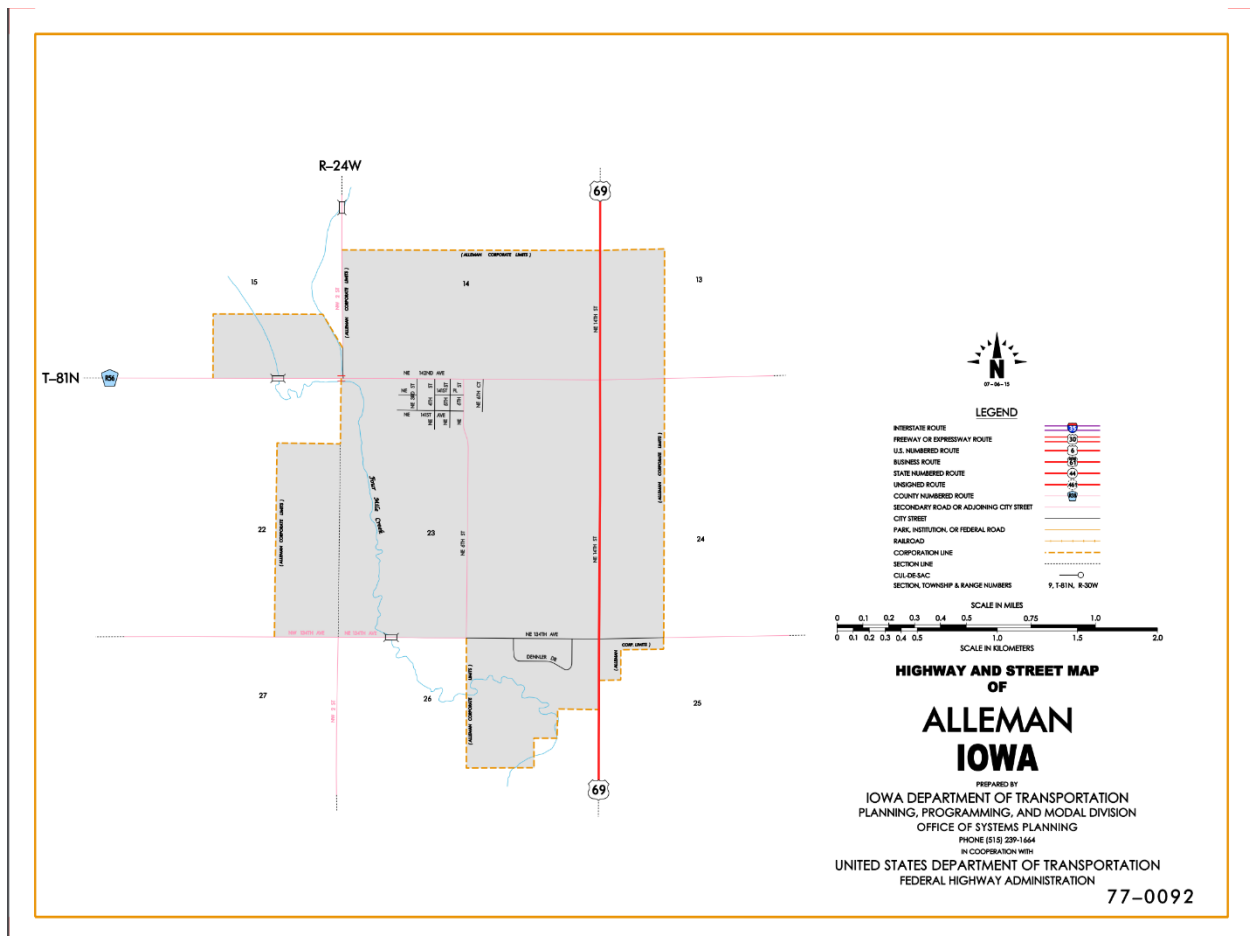
Beginning again on the north corporation line of Des Moines connecting with E 14th Street; thence north following substantially the section line of Sections 24, 13 (junction Interstate 35 and 80), 12 and 1-T79N-R24W and Section 36-T80N-R24W to the south corporation line of Ankeny connecting with S Ankeny Boulevard.



Ankeny:

Beginning on S Ankeny Boulevard at the south corporation line; thence north on S Ankeny Boulevard to N Ankeny Boulevard; thence north on N Ankeny Boulevard to the north corporation line.

Beginning again on the north corporation line of Ankeny connecting with N Ankeny Boulevard.; thence north following substantially the section line of Sections 26 and 25-T81N-R24W to the south corporation line of Alleman, connecting with NE 14th Street.



Alleman:

Beginning on the south corporation line connecting with NE 14th Street; thence northerly on NE 14th Street to the north corporation line.

Beginning again on the north corporation line of the City of Alleman connecting with an NE 14th Street; thence northerly following substantially the section line of Sections 13, 12 and 1–T81N–R24W to the Polk–Story County line at a point near the NW Corner Section 1–T81N–R24W, Polk County (SW Corner Section 36–T82N–R24W, Story County).

OFFICIAL DESCRIPTION CHANGE

COUNTY: Polk

ROUTE: US 69

STAFF ACTION NUMBER: S–87–1518

APPROVAL DATE: 5–13–87

New Description – US 69 and its extensions in Polk County described as follows:

Beginning on the Polk–Warren County line near the SE Corner Section 35–T78N–R24W, Polk County (NE Corner Section 2–T77N–R24W, Warren County); thence northwest through Section 35–T78N–R24W to the east corporation line of Des Moines, connecting with an unnamed street.

Des Moines:

Beginning on an unnamed street at the east corporation line; thence northwest an unnamed street to SE 14th Street; thence north on SE 14th Street to Johnson Street (begin one-way northbound); thence northeast on Johnson Street to E 15th Street; thence north on E 15th Street to an unnamed street; thence northwest on unnamed street to E 14th Street (end one-way northbound); thence north on E 14th Street to the north corporation line.

Also

Commencing at unnamed street on E 14th Street (begin one-way southbound) then south on E 14th Street to Johnson Street (end one-way southbound).

Beginning again on the north corporation line of Des Moines connecting with E 14th Street; thence north following substantially the section line of Sections 24, 13 (junction Interstate 35 and 80), 12 and 1-T79N-R24W and Section 36-T80N-R24W to the south corporation line of Ankeny connecting with S Ankeny Boulevard.

Ankeny:

Beginning on S Ankeny Boulevard at the south corporation line; thence north on S Ankeny Boulevard to N Ankeny Boulevard; thence north on N Ankeny Boulevard to the north corporation line.

Beginning again on the north corporation line of Ankeny connecting with N Ankeny Boulevard.; thence north following substantially the section line of Sections 12 and 1-T80N-R24W and Sections 36 and 25-T81N-R24W to the south corporation line of Alleman, connecting with NE 14th Street.

Alleman:

Beginning on NE 14th Street at the south corporation line; thence north on NE 14th Street to the north corporation line.

Beginning again on the north corporation line of Alleman connecting with NE 14th Street; thence north following substantially the section line of Sections 13, 12 and 1-T81N-R24W to the Polk-Story County line at a point near the NW Corner Section 1-T81N-R24W, Polk County (SW Corner Section 36-T82N-R24W, Story County).

COMMISSION ORDER

DIVISION: Planning & Research

COMMISSION ORDER NUMBER: PR-79-272

SUBMITTED BY: C.I. MacGillivray
MEETING DATE: 11-2-78

TITLE: US 69, Polk County, Iowa

DISCUSSION/BACKGROUND:

Due to a review of our Primary Road System records, US 69 in Polk County should be deleted and the new description added should be officially included into the Primary System.

US 69 begins on the Polk-Warren County line approximately 5 miles west of Carlisle, and travels northwesterly and northerly via Des Moines, Ankeny and Alleman to the Polk-Story County line approximately 5 miles east of Sheldahl, Iowa,

PROPOSAL/ACTION RECOMMENDATION:

Locate US 69 and its extensions in Polk County as follows:

Beginning on the Polk-Warren County line near the SE Corner Section 35-T78N-R24W, Polk County (NE Corner Section 2-T77N-R24W, Warren County); thence northwesterly through Section 35-T78N-R24W to the east corporation line of the City of Des Moines connecting with an unnamed street.

Des Moines:

Beginning on the east corporation line connecting with an unnamed street; thence in a general northerly direction to the north corporation line connecting with an unnamed street.

Also

Beginning at Fremont Street on E 14th Street (begin one-way southbound); thence south on E 14th Street to Vine Street (end one-way southbound).

Beginning again on the north corporation line of the City of Des Moines connecting with an unnamed street; thence northerly following substantially the section line of Sections 24, 13 (junction Interstate 35 and 80), 12 and 1-T79N-R24W and Section 36-T80N-R24W to the south corporation line of the City of Ankeny connecting with an unnamed street.

Ankeny:

Beginning on the south corporation line connecting with an unnamed street; thence northerly to the north corporation line connecting with an unnamed street.

Beginning again on the north corporation line of the City of Ankeny connecting with an unnamed street; thence northerly following substantially the section line of Sections 12 and 1-T80N-R24W and Sections 36 and 25-T81N-R24W to the south corporation line of the City of Alleman connecting with an unnamed street.

Alleman:

Beginning on the south corporation line connecting with an unnamed street; thence northerly to the north corporation line connecting with an unnamed street.

Beginning again on the north corporation line of the City of Alleman connecting with an unnamed street; thence northerly following substantially the section line of Sections 13, 12 and 1-T81N-R24W to the Polk-Story County line at a point near the NW Corner Section 1-T81N-R24W, Polk County (SW Corner Section 36-T82N-R24W, Story County).

NOW, THEREFORE: Be it resolved that the Iowa Department of Transportation approve the location of US 69 in Polk County, Iowa.

NOTE: To become effective upon the adoption of this resolution.

REVISED: 5-13-87

COMMISSION RESOLUTION

DIVISION: Planning & Research

COMMISSION ORDER NUMBER: 74-499

SUBMITTED BY: Gene R. Mills

MEETING DATE: 5-1-74

TITLE: Approving the location of US 69 and its extensions in Polk County, Iowa.

Locate US 69 and its extensions in Polk County, Iowa as follows:

Beginning on the Polk-Warren County line near the SE Corner Section 35-T78N-R24W, Polk County (NE Corner Section 2-T77N-R24W, Warren County); thence northwesterly to the east corporation line of the City of Des Moines connecting with an unnamed street.

Beginning again on the north corporation line of the City of Des Moines connecting with NE 14th Street; thence north following substantially the section line to the south corporation line of the City of Ankeny connecting with E 14th Street.

Beginning again on the north corporation line of the City of Ankeny connecting with E 14th Street; thence north following substantially the section line to the south corporation line of the Town of Alleman connecting with NE 14th Street.

Beginning again on the north corporation line of the Town of Alleman connecting with NE 14th Street; thence north following substantially the section line to the Polk–Story County line at a point near the NW Corner Section 1–T81N–R24W, Polk County (SW Corner Section 36–T82N–R24W, Story County).

Alleman:

Commencing on NE 14th Street at the south corporation line; thence northerly on NE 14th Street to the north corporation line.

Des Moines:

Commencing on unnamed street at the east corporation line; thence northwesterly to SE 14th Street; thence northerly on SE 14th Street to Vine Street (begin one–way northbound); thence northeasterly to E 15th Street; thence northerly on E 15th Street to Walker Street; thence northwesterly to E 14th Street, (end one–way northbound); thence north on E 14th Street to the north corporation line.

Also

Commencing at Fremont Street on E 14th Street (Begin one–way southbound); thence south on E 14th Street to Vine Street (end one–way southbound).

NOW, THEREFORE: Be it resolved that the Iowa State Highway Commission approve the location of US 69 and its extensions in Polk County, Iowa.

NOTE: To become effective upon adoption of this resolution.

COMMISSION RESOLUTION

DIVISION: Planning & Research

COMMISSION ORDER NUMBER: 71-796

SUBMITTED BY: Raymond L. Kassel

MEETING DATE: 6-9-71

TITLE: Approving the revision of US 69 in Polk County

Locate US 69 in Polk County, Iowa as follows:

Beginning at the Polk-Warren County line near the SE Corner Section 35-T78N-R24W, Polk County (NE Corner Section 2-T77N-R24W, Warren County); thence northwesterly to the east corporation line of the City of Des Moines, approximately 400 feet south and 200 feet east of the W ¼ Corner Section 35-T78N-R24W, connecting with an unnamed street.

Des Moines:

Beginning on an unnamed street at the east corporation line; thence northwesterly on said unnamed street to E 14th Street; thence north on E 14th Street to the north corporation line.

NOW THEREFORE: Be it resolved that the Iowa State Highway Commission approve the revision of US 69 in Polk County, Iowa.

NOTE: The following sections of old US 69 and new connection shall revert to the Polk County Secondary Road System in accordance with Section 313.2 Code of Iowa; Station 1119+27.8 to Station 1164+21.8, Station 0+00 to Station 6+38, Station 30998+89 to Station 31019+00, Station 14092+00 to Station 14110+25.

The following section of old US 69 has been obliterated and shall be abandoned; Station 1165+58.7 to Station 1177+56.3.

OFFICIAL DESCRIPTION CHANGE

COUNTY: Polk

ROUTE: US 69

APPROVAL DATE: 6-9-71

Beginning at the Polk-Warren County line near the SE Corner Section 35-T78N-R24W, Polk County (NE Corner Section 2-T77N-R24W, Warren County); thence northwesterly to the east corporation line of the City of Des Moines, connecting with an unnamed street.

Beginning again on the north corporation line of the city of Des Moines, connecting with E 14th Street; thence north following substantially the section line to the south corporation line of the City of Ankeny, connecting with E 14th Street.

Beginning again on the north corporation line of the City of Ankeny, connecting with E 14th Street; thence north following substantially the section line to the Polk-Story County line at a point near the NW Corner Section 1-T81N-R24W, Polk County (SW Corner Section 36-T82N-R24W, Story County).

OFFICIAL DESCRIPTION CHANGE

COUNTY: Polk

ROUTE: US 69

APPROVAL DATE: 7-28-42

Beginning at the Polk-Warren County line at a point near the SE Corner Section 35-T78N-R24W, Polk County (NW Corner Section 1-T77N-R24W, Warren County); thence northwesterly through Section 35-T78N-R24W to a point at or

near the NW Corner said Section 35; thence northerly following substantially the section line along the west line of Section 26 and 23-T78N-R24W to the south corporation line of the City of Des Moines connecting with E 14th Street.

Beginning again on the north corporation line of the City of Des Moines, connecting with E 14th Street; thence north following substantially the section line to the south corporation line of the Town of Ankeny, connecting with E 14th Street.

Beginning again on the north corporation line of the Town of Ankeny, connecting with E 14th Street; thence north following substantially the section line to the Polk-Story County line at a point near the NW Corner Section 1-T81N-R24W, Polk County (SW Corner Section 36-T82N-R24W, Story County).

REVISED: 6-9-71

OFFICIAL DESCRIPTION CHANGE

COUNTY: Polk

CITY OF: Des Moines

ROUTE: US 69

APPROVAL DATE: 7-28-42

Commencing on E 14th Street at the south corporation line; thence northerly on E 14th Street to the north corporation line.

OFFICIAL DESCRIPTION CHANGE

COUNTY: Polk

CITY OF: Ankeny

ROUTE: US 69

APPROVAL DATE: 2-5-36

Commencing on Ankeny Boulevard at the south corporation line; thence northerly on Ankeny Boulevard to the north corporation line.

REVISED: 5-1-74