

OFFICIAL DESCRIPTION CHANGE

OFFICE: Analytics

EFFECTIVE DATE: 12-8-2020

COUNTY: Linn

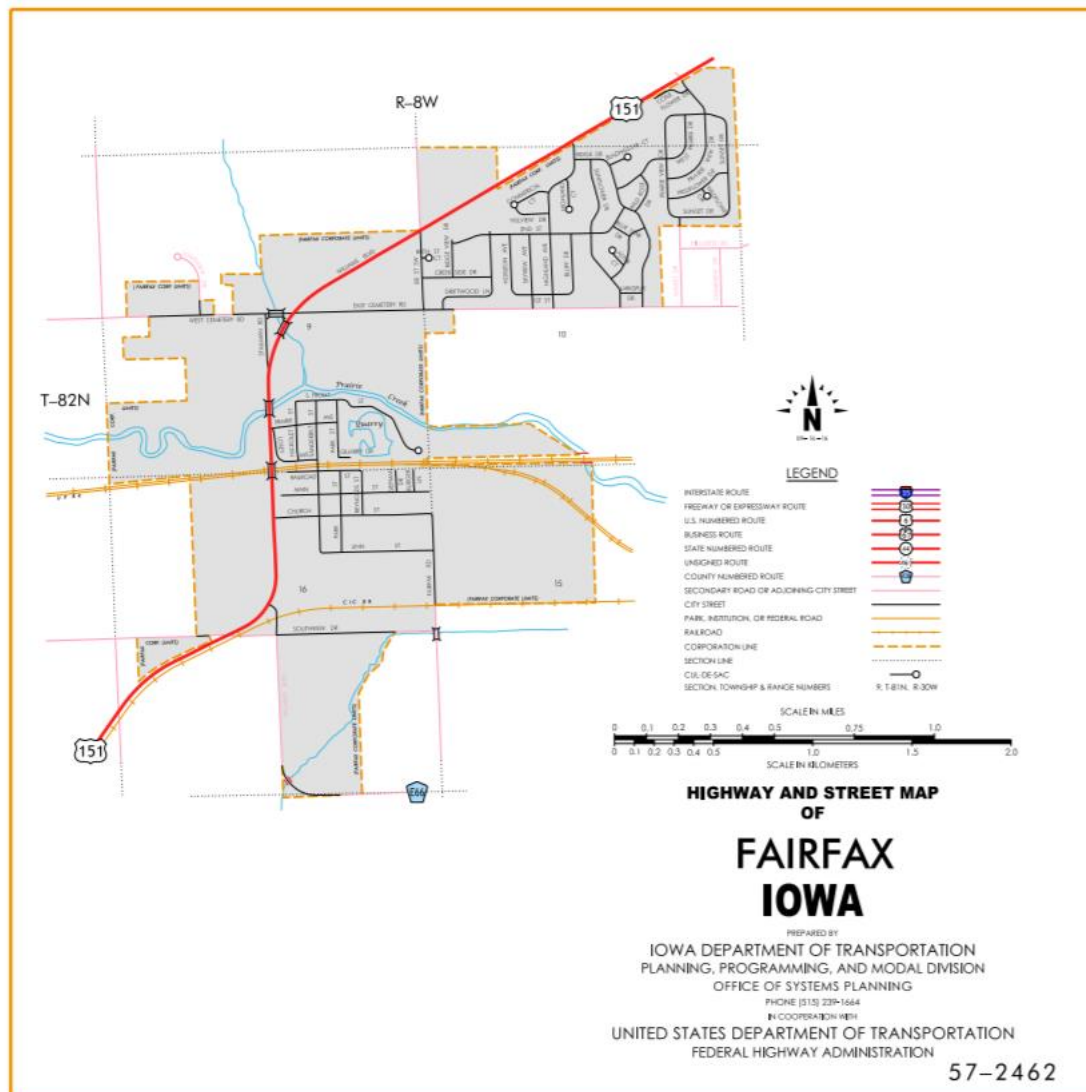
ROUTE: US 151

ENTERED BY: Paul Mauer

ENTERED DATE: 2-3-2022

New Description – US 151 and its extensions in Linn County described as follows:

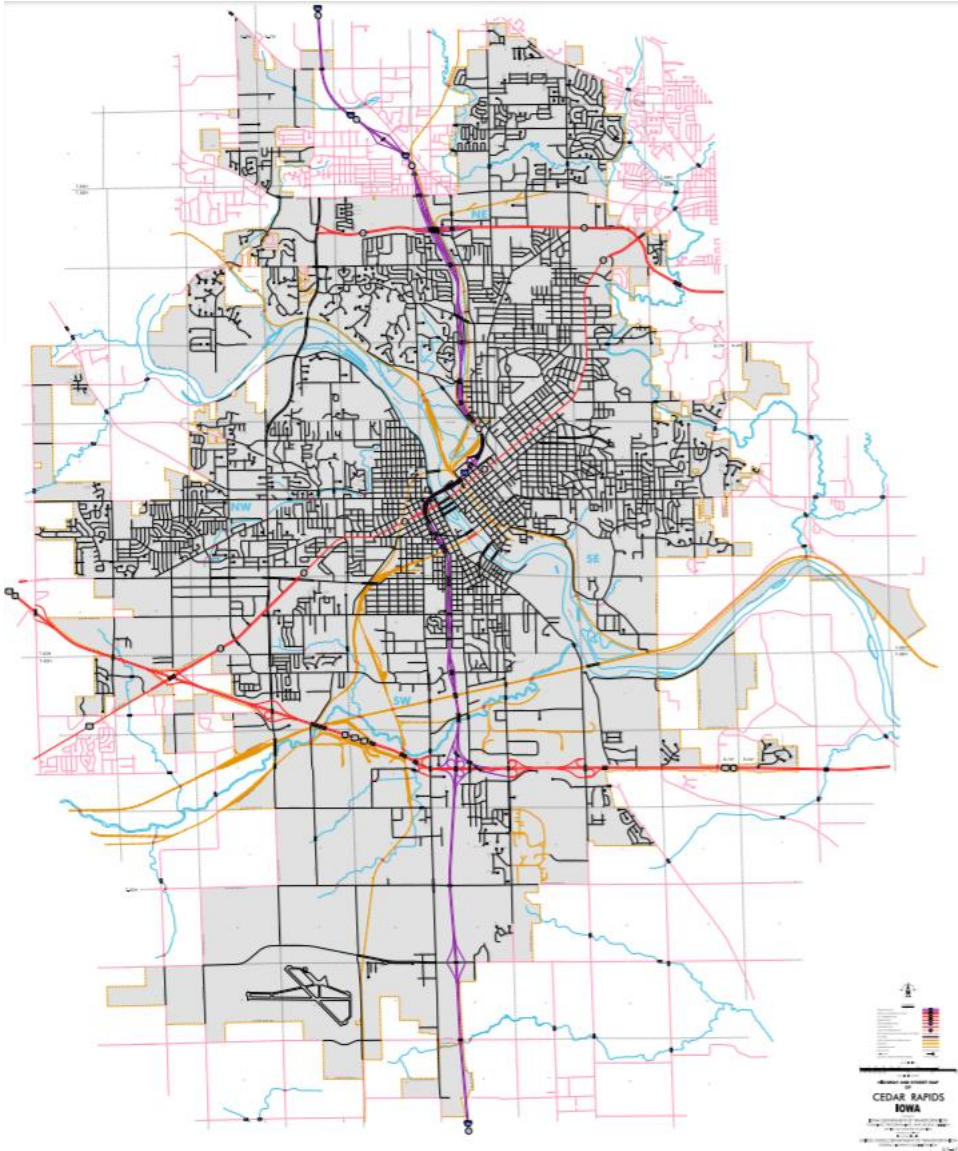
Beginning on the Linn-Benton County Line (east corporation line of Walford) at a point approximately 1200 feet north of the SW Corner Section 30-T82N-R8W, Linn County (SE Corner Section 25-T82N-R9W, Benton County); thence in a northeasterly direction through Sections 30, 19, 20, 17 and 16-T82N-R8W to the south corporation line of Fairfax connecting with Williams Boulevard.



Fairfax:

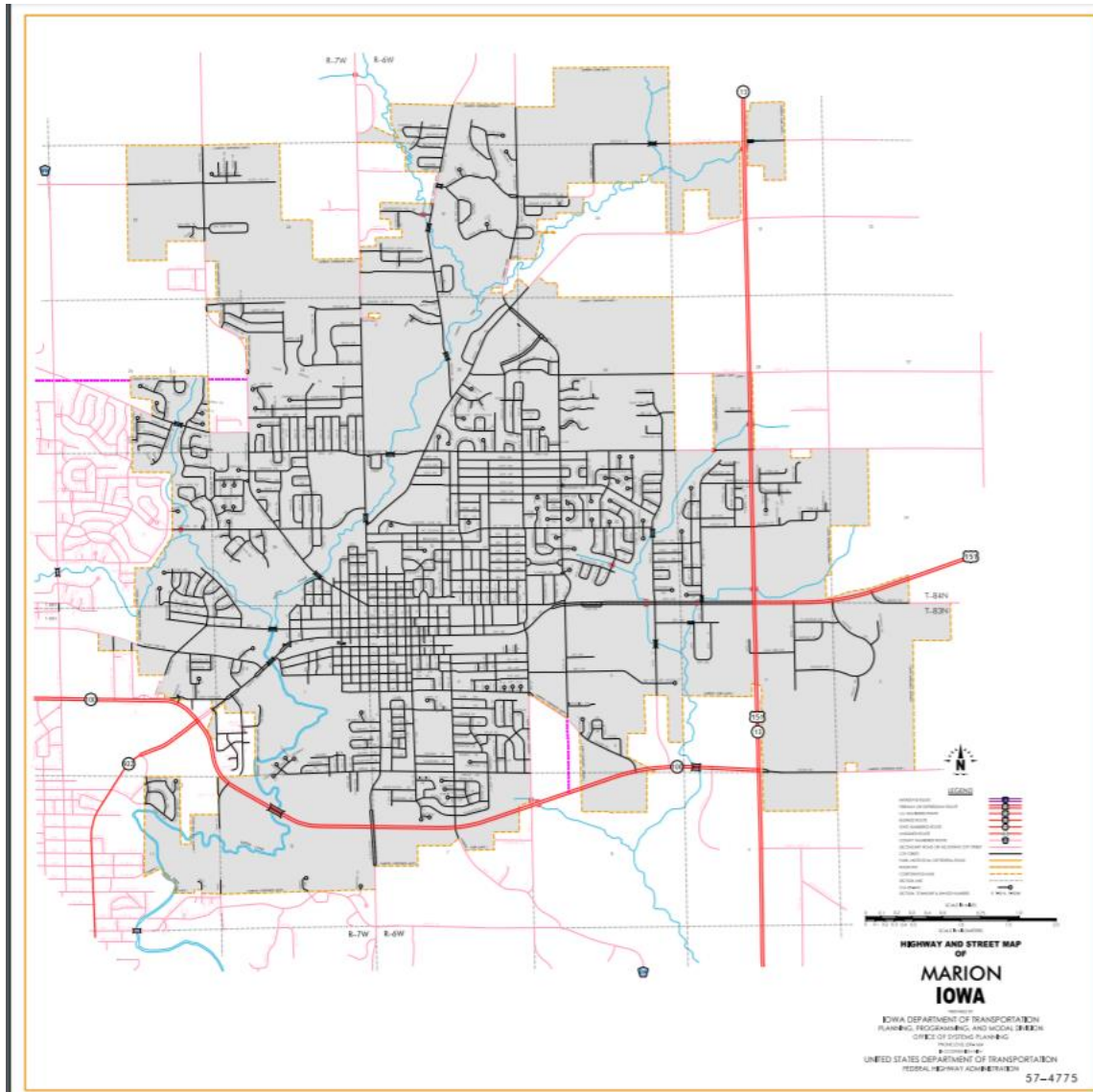
Beginning on Williams Boulevard at the south corporation line; thence northeast, north and northeast on Williams Boulevard to the north corporation line.

Beginning again on the north corporation line of Fairfax connecting with Williams Boulevard; thence in a northeasterly direction through Sections 10, 3, and 2-T82N-R8W (junction US 30 and US 218) then southeasterly with US 30/218 to the west corporation line of Cedar Rapids connecting with Lincoln Freeway.



Cedar Rapids:

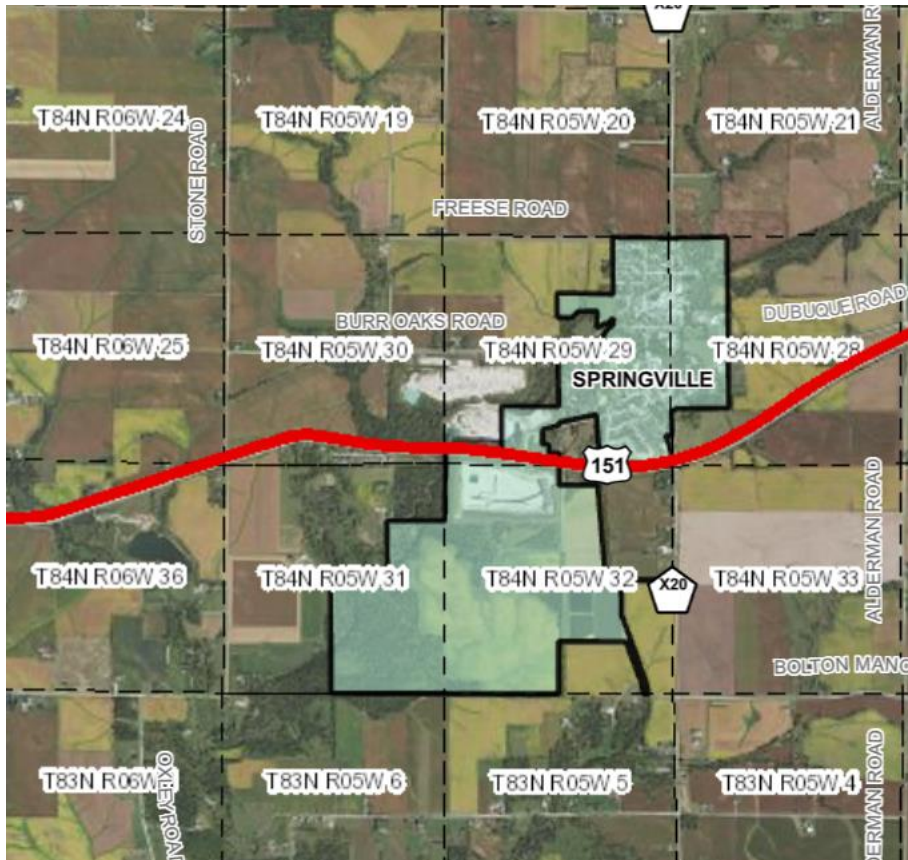
Beginning on Lincoln Freeway at the west corporation line; thence southeast and east on Lincoln Freeway; thence east through Sections 11 and 12-T82N-R7W and Sections 7, 8, and 9-T82N-R6W (junction Iowa 13); thence northerly through Sections 9 and 4-T82N-R6W; thence northwesterly and northerly through Sections 33, 28, and 21-T83N-R6W to a point near the S $\frac{1}{4}$ Corner of Section 16-T83N-R6W; thence north following substantially the center section line of Sections 16, 9, and 4-T83N-R6W to the south corporation line of Marion.



Marion:

Beginning at the south corporation line; thence to the north junction of Iowa 13; thence east and northeast to the east corporation line.

Beginning again at the east corporation of Marion; thence in a northeasterly and easterly direction through Sections 34, 35, 36 and 25-T84N-R6W and Section 30 to near Center SW ¼ Section 29-T84W-R5W; thence southeasterly through 29-T84W-5W to the west corporation line of Springville.



Springville:

Beginning at the west corporation line then southeasterly to the east corporation line.

Beginning again at the east corporation line; thence southeasterly through Sections 29 and 32–T84W–5W to the west corporation line of Springville.

Springville:

Beginning at the west corporation line then east and northeast to the east corporation line.

Beginning again at the east corporation line of Springville; thence northeasterly through Sections 28, 27, 26, 23 and 24–T84W–R5W to the Linn–Jones County Line at a point approximately 300 feet south of the E $\frac{1}{4}$ Corner Section 24–T84N–R5W, Linn County (W $\frac{1}{4}$ Corner Section 19–T84N–R4W, Jones County).

OFFICIAL DESCRIPTION CHANGE

OFFICE: Analytics

EFFECTIVE DATE: 11-20-2018

COUNTY: Linn

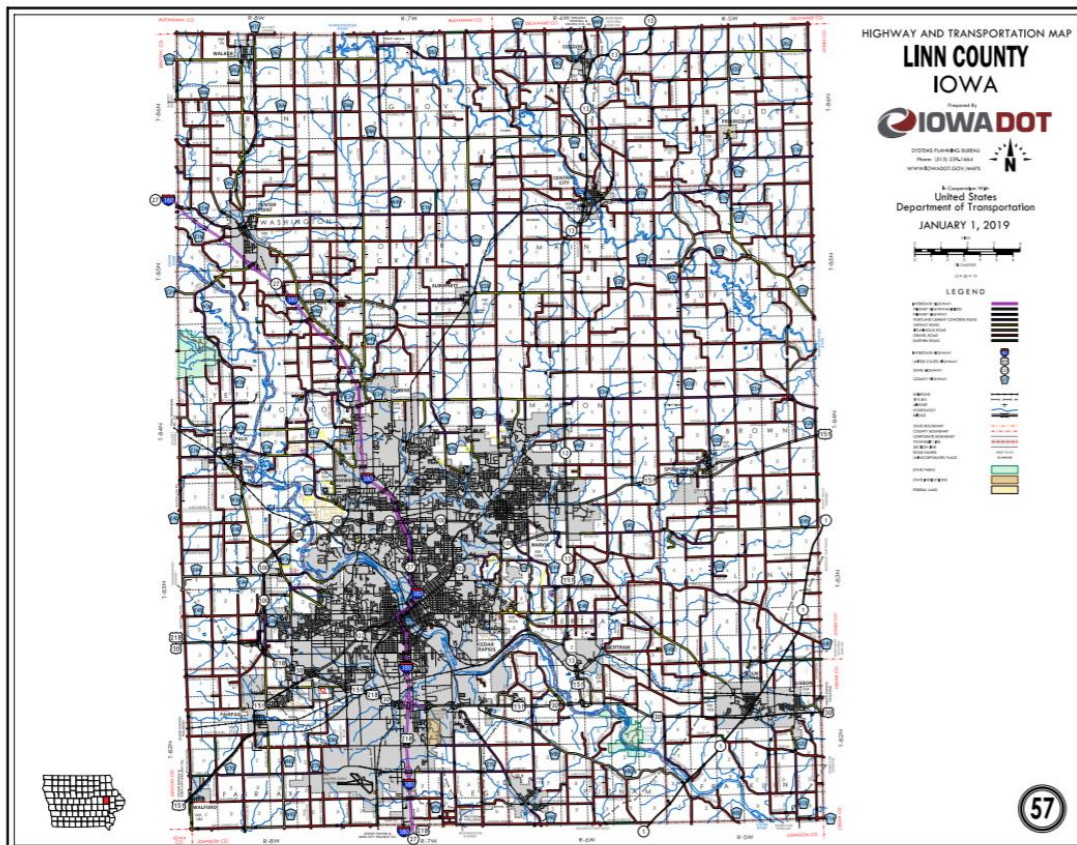
ROUTE: US 151

ENTERED BY: Paul Mauer

ENTERED DATE: 8-12-2020

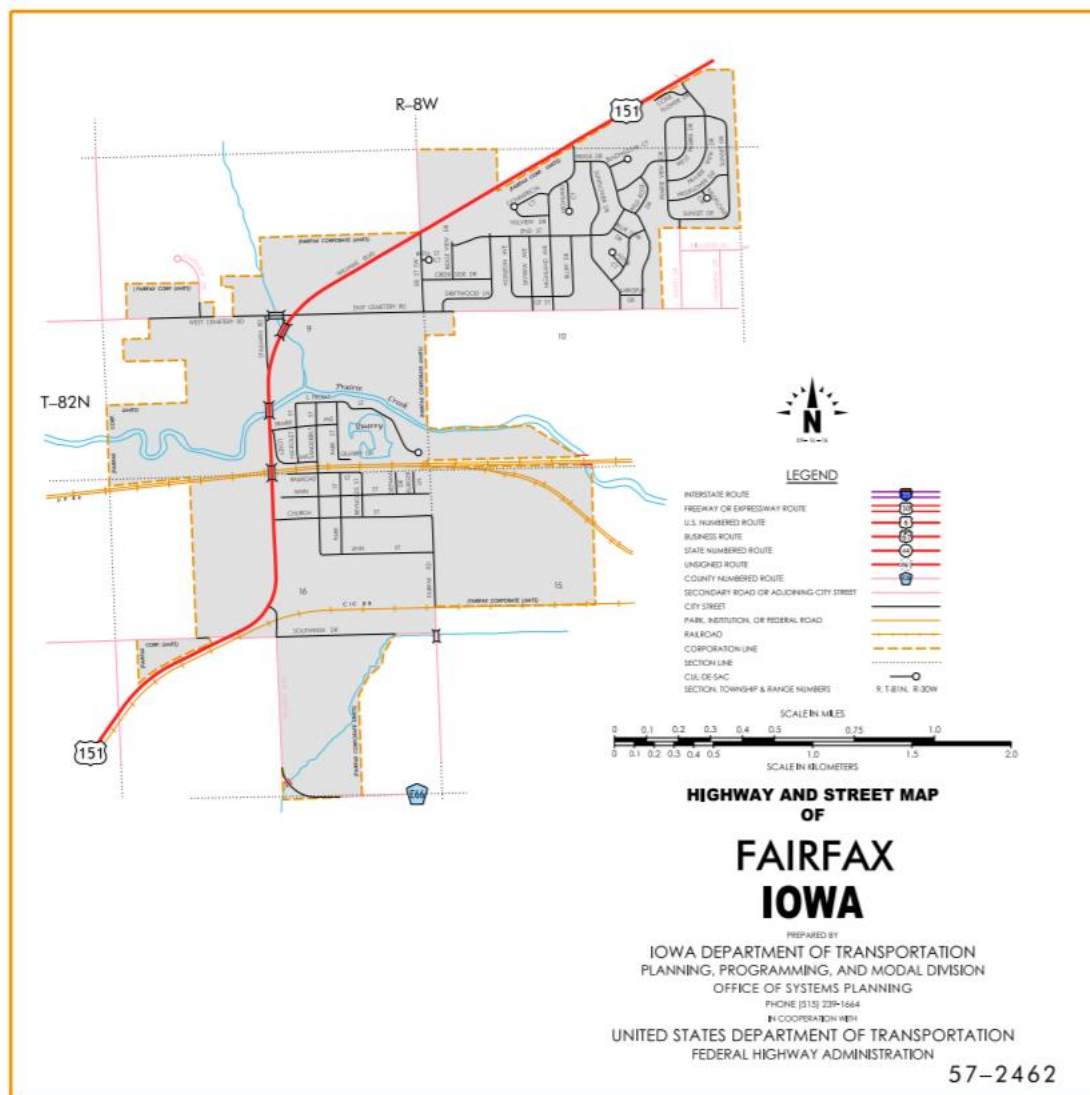
DISCUSSION/BACKGROUND:

Annexation by city of Springville has impacted the US 151 route in Linn County, therefore the route description will be modified to reflect these changes.



New Description – US 151 and its extensions in Linn County described as follows:

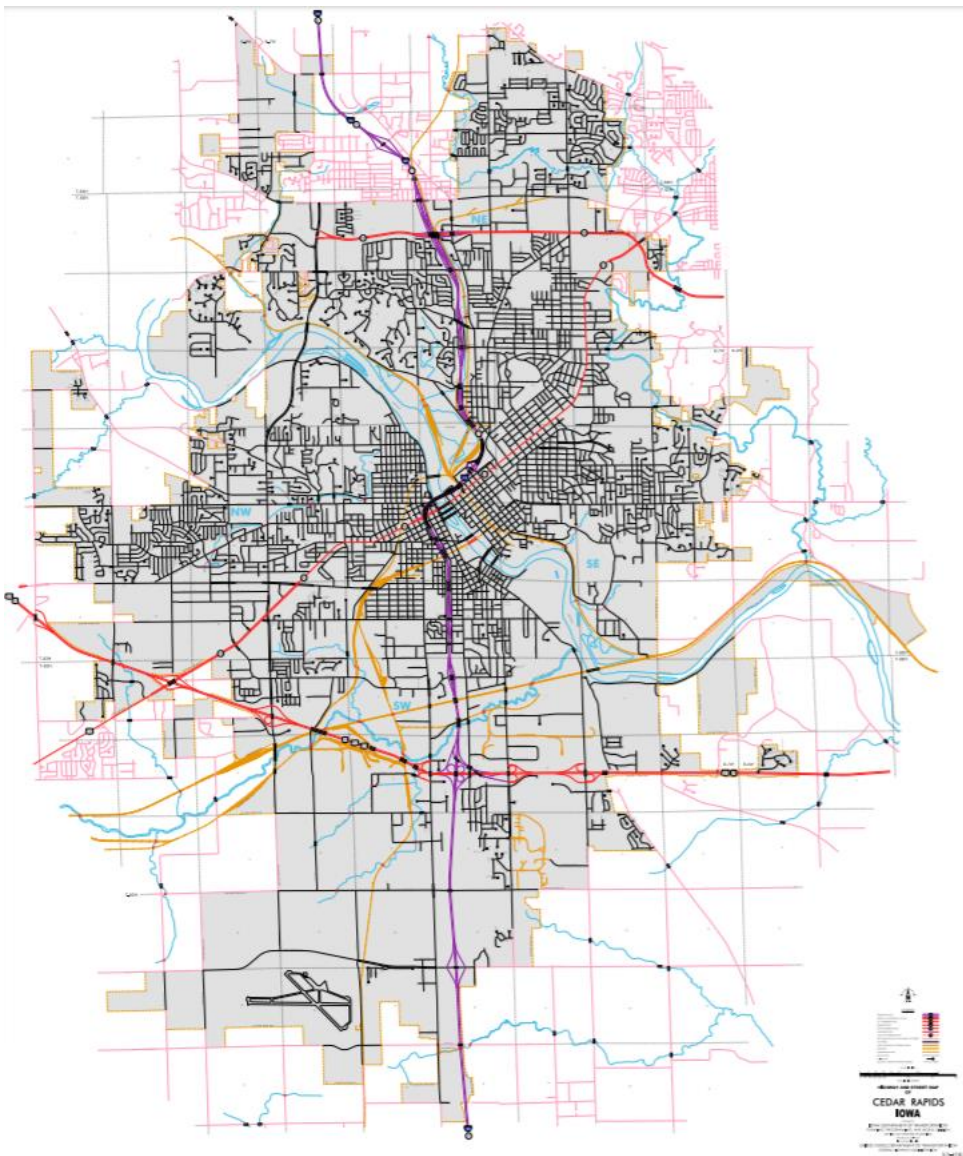
Beginning on the Linn-Benton County Line (east corporation line of Walford) at a point approximately 1200 feet north of the SW Corner Section 30-T82N-R8W, Linn County (SE Corner Section 25-T82N-R9W, Benton County); thence in a northeasterly direction through Sections 30, 19, 20, 17 and 16-T82N-R8W to the south corporation line of Fairfax connecting with Williams Boulevard.



Fairfax:

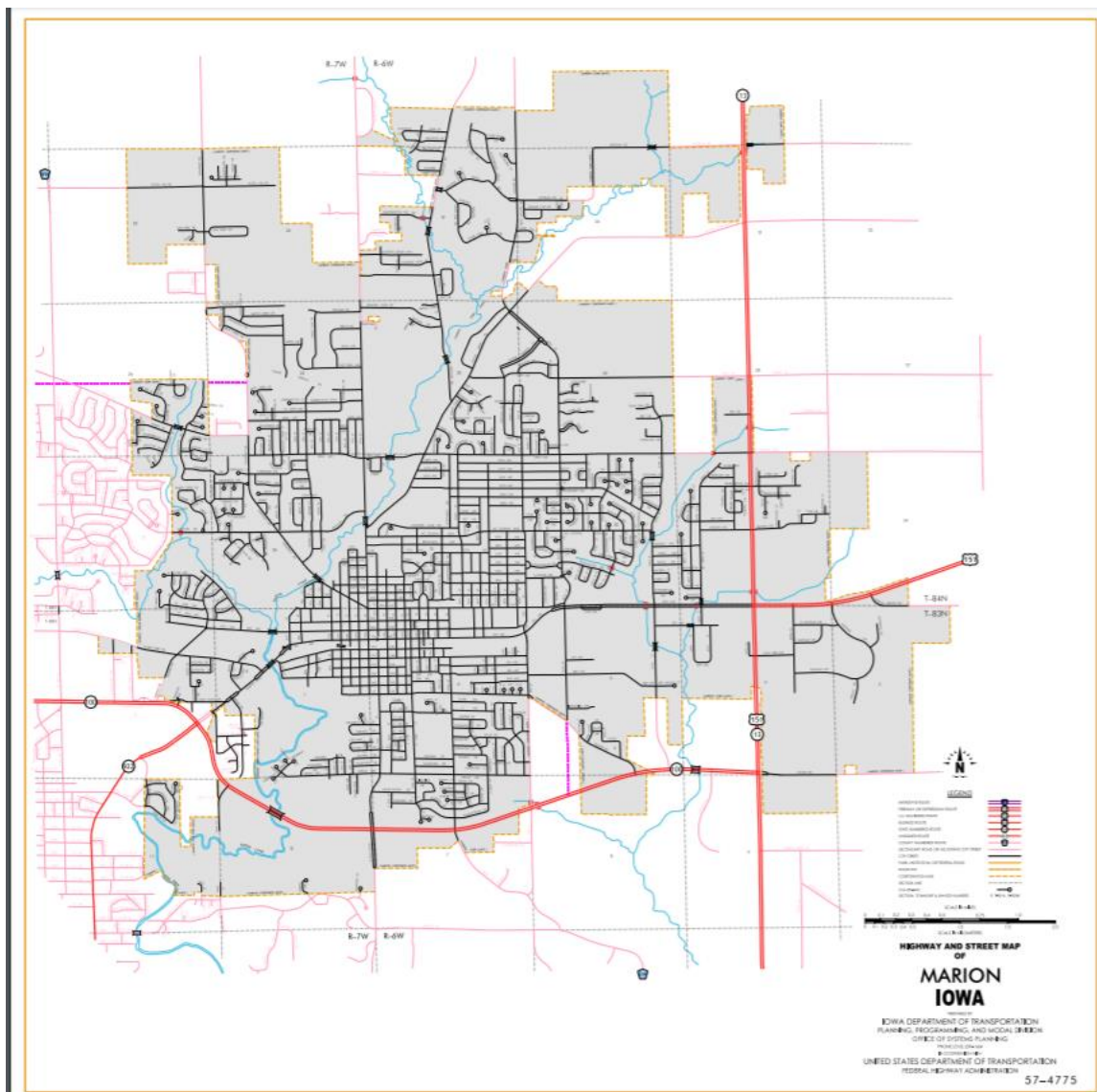
Beginning on Williams Boulevard at the south corporation line; thence northeast, north and northeast on Williams Boulevard to the north corporation line.

Beginning again on the north corporation line of Fairfax connecting with Williams Boulevard; thence in a northeasterly direction through Sections 10, 3, and 2-T82N-R8W (junction US 30 and US 218) then southeasterly with US 30/218 to the west corporation line of Cedar Rapids connecting with Lincoln Freeway.



Cedar Rapids:

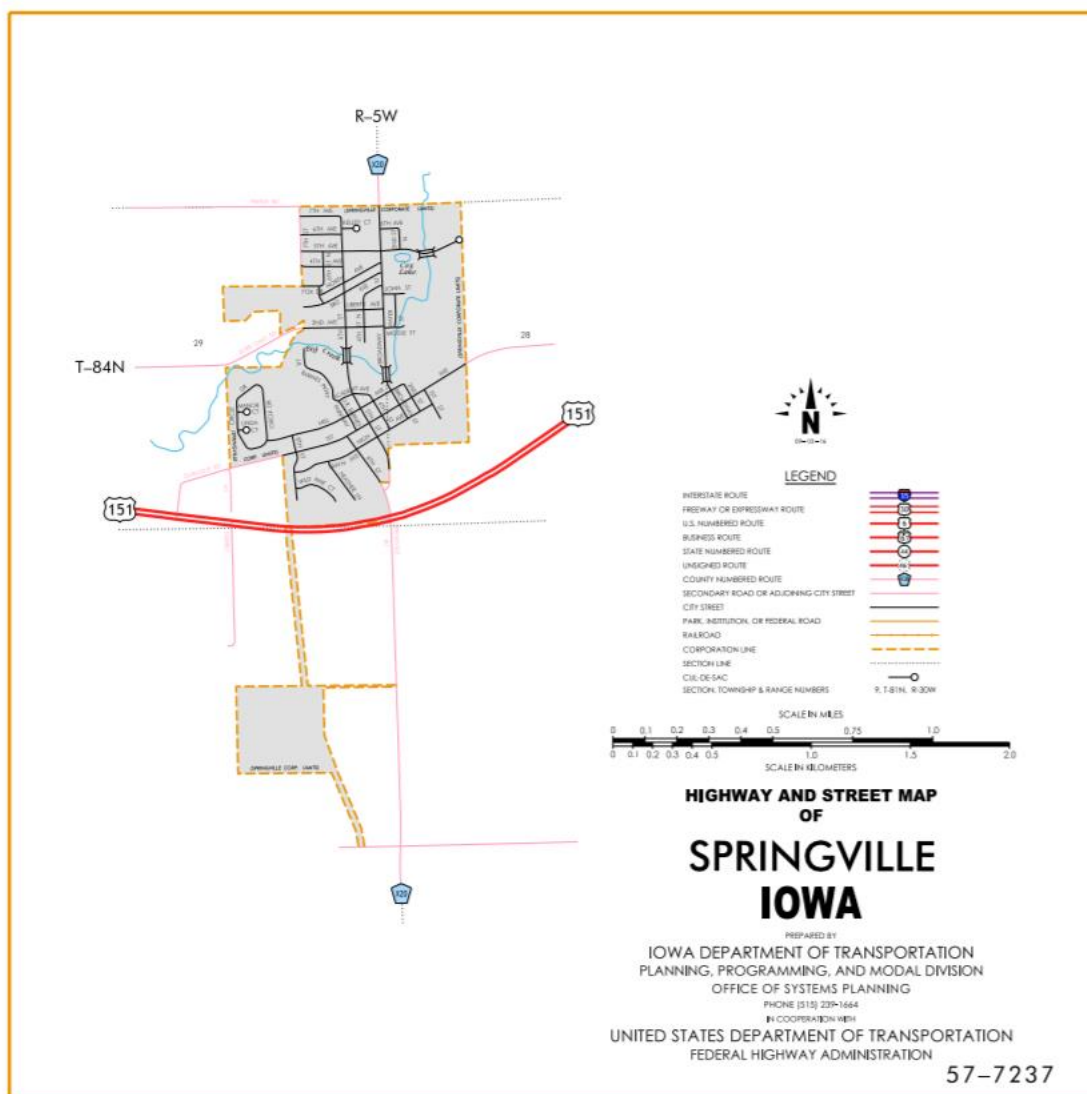
Beginning on Lincoln Freeway at the west corporation line; thence southeast and east on Lincoln Freeway; thence east through Sections 11 and 12-T82N-R7W and Sections 7, 8, and 9-T82N-R6W (junction Iowa 13); thence northerly through Sections 9 and 4-T82N-R6W; thence northwesterly and northerly through Sections 33, 28, and 21-T83N-R6W to a point near the S $\frac{1}{4}$ Corner of Section 16-T83N-R6W; thence north following substantially the center section line of Sections 16, 9, and 4-T83N-R6W to the south corporation line of Marion.



Marion:

Beginning at the south corporation line; thence to the north junction of Iowa 13; thence east and northeast to the east corporation line.

Beginning again at the east corporation of Marion; thence in a northeasterly and easterly direction through Sections 34, 35, 36 and 25-T84N-R6W and Section 30 to near Center SW ¼ Section 29-T84W-R5W; thence southeasterly through 29-T84W-5W to the west corporation line of Springville.



Springville:

Beginning at the west corporation line then southeasterly to the east corporation line.

Beginning again at the east corporation line; thence southeasterly through 29-T84W-5W to the west corporation line of Springville.

Springville:

Beginning at the west corporation line then east and northeast to the east corporation line.

Beginning again at the east corporation line of Springville; thence northeasterly through Sections 28, 27, 26, 23 and 24-T84W-R5W to the Linn-Jones County Line at a point approximately 300 feet south of the E $\frac{1}{4}$ Corner Section 24-T84N-R5W, Linn County (W $\frac{1}{4}$ Corner Section 19-T84N-R4W, Jones County).

STAFF ACTION

OFFICE: Transportation Inventory

STAFF ACTION NUMBER: S-95-344

SUBMITTED BY: Patrick R. Cain

SUBMITTAL DATE: 8-17-94

TITLE: US 151, Linn County

DISCUSSION/BACKGROUND:

Transfer of jurisdiction agreement numbers 93-TJ-001-57 and 93-TJ-002-57 between the Iowa Department of Transportation, City of Springville and Linn County transferred the old section of US 151 to the city of Springville and Linn County on January 1, 1993.

Old US 151 begins approximately .18 mile west of Springville and travels easterly to approximately .96 mile east of Springville.

PROPOSAL/ACTION RECOMMENDATION:

It is recommended the old section of US 151 in Springville and the rural sections be deleted from the Primary Road System.

Old Description – US 151 and its extensions in Linn County.

Beginning near Center SW ¼ Section 29–T84N–R5W; thence northeasterly to west corporation line of Springville, connecting with 1st Avenue.

Springville:

Beginning on 1st Avenue at west corporation line; thence northeast on 1st Avenue to east corporation line.

Beginning again on the east corporation line of Springville connecting with 1st Avenue; thence in easterly direction to approximately near Center NW ¼ Section 27–T84N–R5W.

STAFF ACTION

OFFICE: Transportation Inventory

STAFF ACTION NUMBER: S-95-343

SUBMITTED BY: Patrick R. Cain

SUBMITTAL DATE: 8-16-94

TITLE: US 151, Linn County

DISCUSSION/BACKGROUND:

Due to the relocation in 1992 of US 151 in and near Springville, the description should be revised to include the changes of US 151 in Linn County.

US 151 begins at the Linn–Benton County Line and travels northeasterly through Fairfax and Cedar Rapids to the Linn–Jones County Line.

PROPOSAL/ACTION RECOMMENDATION:

It is recommended the old description of US 151 in Linn County be deleted from the Primary Road System and the new description, as described in the attachment, be added to the Primary Road System.

New Description – US 151 and its extensions in Linn County described as follows:

Beginning on the Linn–Benton County Line (east corporation line of Walford) at a point approximately 1200 feet north of the SW Corner Section 30–T82N–R8W, Linn County (SE Corner Section 25–T82N–R9W, Benton County); thence in a northeasterly direction through Sections 30, 19, 20, 17 and 16–T82N–R8W to the south corporation line of Fairfax connecting with Williams Boulevard.

Fairfax:

Beginning on Williams Boulevard at the south corporation line; thence northeast, north and northeast on Williams Boulevard to the north corporation line.

Beginning again on the north corporation line of Fairfax connecting with Williams Boulevard; thence in a northeasterly direction through Sections 10, 3, and 2–T82N–R8W (junction US 30 and US 218) then southeasterly with US 30/218 to the west corporation line of Cedar Rapids connecting with Lincoln Freeway.

Cedar Rapids:

Beginning on Lincoln Freeway at the west corporation line; thence southeast and east on Lincoln Freeway to the east corporation line of Cedar Rapids.

Beginning again at the east corporation line of Cedar Rapids connecting with Lincoln Freeway; thence east through Sections 11 and 12–T82N–R7W

and Sections 7, 8, and 9-T82N-R6W (junction Iowa 13); thence northerly through Sections 9 and 4-T82N-R6W; thence northwesterly and northerly through Sections 33, 28, and 21-T83N-R6W to a point near the S ¼ Corner of Section 16-T83N-R6W; thence north following substantially the center section line of Sections 16, 9, and 4-T83N-R6W to the north junction of Iowa 13; thence east following substantially the section line of Section 4-T83N-R6W to a point near the NE Corner Section 4-T83N-R6W; thence in a northeasterly and easterly direction through Sections 33, 34, 35, 36 and 25-T84N-R6W and Section 30 to near Center SW ¼ Section 29-T84W-R5W; thence southeasterly and northeasterly around the south side of Springville through 29, 32, and 28-T84W-5W to junction old US 151 near Center NW ¼ Section 27-T84W-R5W; thence through Sections 27, 26, 23 and 24-T84W-R5W to the Linn-Jones County Line at a point approximately 300 feet south of the E ¼ Corner Section 24-T84N-R5W, Linn County (W ¼ Corner Section 19-T84N-R4W, Jones County).

REVISED: 8-17-94

STAFF ACTION

OFFICE: Transportation Inventory

STAFF ACTION NUMBER: S-95-342

SUBMITTED BY: Patrick R. Cain

SUBMITTAL DATE: 8-16-94

TITLE: US 151, Linn County

DISCUSSION/BACKGROUND:

To provide a bypass around Cedar Rapids in 1989 US 151 was rerouted with US 30/218 east to Iowa 13 and then north with Iowa 13 to the old junction of US 151 and Iowa 13. On July 7, 1989 old 151 from US 30 northeasterly to Iowa 100 in Cedar Rapids was changed to Iowa 922 and old 151 from Iowa 100 in Cedar Rapids easterly through Marion to the junction of Iowa 13 transferred back to the cities.

Due to the relocation of US 151 in the Cedar Rapids area, the Official Description of US 151 should go from Linn-Benton County Line northeast to US 30/218; thence run duplicate east to Iowa 13; thence north with Iowa 13 to the old junction of US 151 and Iowa 13; thence northeasterly through Springville to the Linn-Jones County Line approximately 3 miles north of Martelle.

PROPOSAL/ACTION RECOMMENDATION:

It is recommended the old description of US 151 in Linn County be deleted from the Primary Road System and the new description, as described in the attachment, be added to the Primary Road System.

New Description – US 151 and its extensions in Linn County described as follows:

Beginning on the Linn-Benton County Line (east corporation line of Walford) at a point approximately 1200 feet north of the SW Corner Section 30-T82N-R8W, Linn County (SE Corner Section 25-T82NR9W, Benton County); thence in a northeasterly direction through Sections 30, 19, 20, 17 and 16-T82N-R8W to the south corporation line of Fairfax connecting with Williams Boulevard.

Fairfax:

Beginning on Williams Boulevard at the south corporation line; thence northeast, north and northeast on Williams Boulevard to the north corporation line.

Beginning again on the north corporation line of Fairfax connecting with Williams Boulevard; thence in a northeasterly direction through Sections 10, 3, and 2-T82N-R8W (junction US 30 and US 218); thence southeasterly with US 30/US 218 to the west corporation line of Cedar Rapids connecting with Lincoln Freeway.

Cedar Rapids:

Beginning on Lincoln Freeway at the west corporation line; thence southeast and east on Lincoln Freeway to the east corporation line of Cedar Rapids.

Beginning again at the east corporation line of Cedar Rapids connecting with Lincoln Freeway; thence east through Sections 11 and 12-T82N-R7W and Sections 7, 8, and 9-T82N-R6W (junction Iowa 13); thence northerly through Sections 9 and 4-T82N-R6W; thence northwesterly and northerly through Sections 33, 28, and 21-T83N-R6W to a point near the S $\frac{1}{4}$ Corner of Section 16-T83N-R6W; thence north following substantially the center section line of Sections 16, 9, and 4-T83N-R6W to the north junction of Iowa 13; thence east following substantially the section line of Section 4-T83N-R6W to a point near the NE Corner Section 4-T83N-R6W; thence in a northeasterly and easterly direction through Sections 33, 34, 35, 36, and 25-T84N-R6W and Section 30 and 29-T84N-R5W to the west corporation line of Springville, connecting with 1st Avenue.

Springville:

Beginning on 1st Avenue at the west corporation line; thence northeast on 1st Avenue to the east corporation line.

Beginning again on the east corporation line of Springville connecting with 1st Avenue; thence in an easterly and northeasterly direction through Sections 28, 27, 26, 23 and 24-T84N-R5W to the Linn-Jones County Line at a point approximately 300 feet south of the E $\frac{1}{4}$ Corner of Section 24-T84N-R5W, Linn County, (W $\frac{1}{4}$ Corner Section 19-T84N-R4W, Jones County).

REVISED: 8-16-94

STAFF ACTION

OFFICE: Transportation Inventory

STAFF ACTION NUMBER: S-86-1006

SUBMITTED BY: Patrick R. Cain

SUBMITTAL DATE: 3-3-86

TITLE: US 151, Linn County

DISCUSSION/BACKGROUND:

To provide a major route between Dubuque, Cedar Rapids and Interstate 80, Iowa 149 in Linn County should be re-designated as US 151 and the description of US 151 in Linn County should be revised to reflect this re-designation. The geographic location of present US 151 in Linn County will remain unchanged.

US 151 begins at the Linn-Benton County Line at the east corporation line of Walford and travels northeasterly via Fairfax, Cedar Rapids, Marion and Springville to the Linn-Jones County Line approximately three miles north of Martelle.

PROPOSAL/ACTION RECOMMENDATION:

It is recommended to approve revising the description of US 151 in Linn County and including the new description in the Primary Road System.

New Description – US 151 and its extensions in Linn County described as follows:

Beginning on the Linn-Benton County Line (east corporation line of Walford) at a point approximately 1200 feet north of the SW Corner Section 30-T82N-R8W, Linn County (SE Corner Section 25-T82N-R9W, Benton County); thence in a northeasterly direction through Sections 30, 19, 20, 17 and 16-T82N-R8W to the south corporation line of Fairfax connecting with Williams Boulevard.

Fairfax:

Beginning on Williams Boulevard at the south corporation line; thence northeast, north and northeast on Williams Boulevard to the north corporation line.

Beginning again on the north corporation line of Fairfax connecting with Williams Boulevard; thence in a northeasterly direction through Sections 10, 3, 2 (junction US 30 and US 218) and 1-T82N-R8W to the west corporation line of Cedar Rapids connecting with Williams Boulevard.

Cedar Rapids:

Beginning on Williams Boulevard at the west corporation line; thence northeast on Williams Boulevard to 1st Avenue; thence east, northeast, north and northeast on 1st Avenue to the east corporation line (west corporation line of Marion).

Marion:

Beginning on 1st Avenue at the west corporation line (east corporation line of Cedar Rapids); thence northeast on 1st Avenue to the east corporation line (west corporation line of Cedar Rapids).

Cedar Rapids:

Beginning on 1st Avenue at the west corporation line (east corporation line of Marion); thence northeast on 1st Avenue to the east corporation line (west corporation line of Marion).

Marion:

Beginning on Marion Road at the west corporation line (east corporation line of Cedar Rapids); thence northeast on Marion Road to 7th Avenue; thence east on 7th Avenue to an unnamed street; thence northeast and east on an unnamed street to the east corporation line.

Beginning again on the east corporation line of Marion connecting with an unnamed street; thence east following substantially the section line of

Section 4-T83N-R6W to a point near the NE Corner Section 4-T83N-R6W; thence in a northeasterly and easterly direction through Sections 33, 34, 35, 36 and 25-T84N-R6W and Section 30 and 29-T84N-R5W to the west corporation line of Springville, connecting with 1st Avenue.

Springville:

Beginning on 1st Avenue at the west corporation line; thence northeast on 1st Avenue to the east corporation line.

Beginning again on the east corporation line of Springville connecting with 1st Avenue; thence in an easterly and northeasterly direction through Section 28, 27, 26, 23 and 24-T84N-R5W to the Linn-Jones County Line at a point approximately 300 feet south of the E $\frac{1}{4}$ Corner of Section 24-T84N-R5W, Linn County, (W $\frac{1}{4}$ Corner Section 19-T84N-R4W, Jones County).

REVISED: 8-16-94

COMMISSION ORDER

DIVISION: Planning & Research

COMMISSION ORDER NUMBER: PR-82-453

SUBMITTED BY: Patrick R. Cain

MEETING DATE: 1-5-82

TITLE: US 151, Linn County

DISCUSSION/BACKGROUND:

US 151 begins at a junction with US 30, US 218, and Iowa 149 approximately $\frac{1}{2}$ mile southwest of the City of Cedar Rapids and proceeds northeasterly via the cities of Cedar Rapids, Marion and Springville to the Linn-Jones County line approximately three miles north of the City of Martelle.

Due to the relocation of US 30 and US 218 in the Cedar Rapids area, the official description of US 151 should be revised to begin at the junction of relocated US 30 and US 218 in the Cedar Rapids area. This revision would lengthen US 151 approximately two miles.

PROPOSAL/ACTION RECOMMENDATION:

It is recommended the commission approve deleting the present description of US 151 in Linn County from the primary road system and approve including the attached new description of US 151 in the primary road system.

Locate US 151 and its extensions in Linn County as follows:

Beginning at a-point approximately 1450 south and 1450 feet west of the NE Corner Section 2-T82N-R8W (junction US 30, US 218, and Iowa 149): thence northeasterly through Sections 2 and 1-T82N-R8W to the west corporation line of the City of Cedar Rapids connecting with an unnamed street.

Cedar Rapids:

Beginning on the west corporation line connecting with an unnamed street; thence northeasterly, easterly, northeasterly, northerly and northeasterly to the east corporation line (west corporation line of the City of Marion) connecting with an unnamed street.

Marion:

Beginning on the west corporation line (east corporation line of the City of Cedar Rapids) connecting with an unnamed street; thence northeasterly, easterly, northeasterly and easterly to the east corporation line (west corporation line of the City of Cedar Rapids) connecting with an unnamed street.

Cedar Rapids:

Beginning on the west corporation line (east corporation line of the City of Marion) connecting with an unnamed street; thence northeasterly to the east corporation line (west corporation line of the City of Marion) connecting with an unnamed street).

Marion:

Beginning on the west corporation line (east corporation line of the City of Cedar Rapids) connecting with an unnamed street; thence northeasterly to the east corporation line connecting with an unnamed street.

Beginning again on the east corporation line of the City of Marion connecting with an unnamed street; thence east following substantially the section line of Section 4-T83N-R6W to a point near the NE Corner Section 4-T83N-R6W; thence in a northeasterly and easterly direction through Sections 33, 34, 35, 36 and 25-T84N-R6W and Section 30 and 29-T84N-R5W to the west corporation line of the City of Springville, connecting with an unnamed street.

Springville:

Beginning on the west corporation line connecting with an unnamed street; thence northeasterly to the east corporation line connecting with an unnamed street.

Beginning again on the east corporation line of the City of Springville connecting with an unnamed street; thence in an easterly and northeasterly direction through Section 28, 27, 26, 23 and 24-T84N-R5W to the Linn-Jones county line at a point approximately 300 feet south of the E $\frac{1}{4}$ Corner of Section 24-T84N-R5W, Linn County, (W $\frac{1}{4}$ Corner Section 19-T84N-R4W, Jones County).

REVISED: 3-3-86

COMMISSION ORDER

DIVISION: Planning & Research

COMMISSION ORDER NUMBER: PR-79-272

SUBMITTED BY: C.I. MacGillivray

MEETING DATE: 11-2-78

TITLE: US 151, Linn County, Iowa

DISCUSSION/BACKGROUND:

Due to a review of our Primary Road System records US 151 in Linn County should be deleted and the new description added should be officially included into the Primary System.

PROPOSAL/ACTION RECOMMENDATION:

It is recommended that the old description of US 151 in Linn County be deleted and the new description, as referred in the attached detailed description, be included in the Primary Road System effective upon the adoption of this resolution.

Locate US 151 and its extensions in Linn County as follows:

Cedar Rapids:

Beginning on an unnamed street at 16th Avenue SW (junction US 30 and US 218); thence northeasterly, easterly, northeasterly, northerly and northeasterly to the east corporation line (west corporation line of the City of Marion) connecting with an unnamed street.

Marion:

Beginning on the west corporation line (east corporation line of the City of Cedar Rapids) connecting with an unnamed street; thence

northeasterly, easterly, northeasterly and easterly to the east corporation line connecting with an unnamed street.

Beginning on the east corporation line of the City of Marion connecting with an unnamed street; thence east following substantially the section line of Section 4-T83N-R6W to a point near the NE Corner Section 4-T83N-R6W; thence in a northeasterly and easterly direction through Section 33, 34, 35, 36 and 25-T84N-R6W and Section 30 and 29-T84N-R5W to the west corporation line of the City of Springville, connecting with an unnamed street.

Springville:

Beginning on the west corporation line connecting with an unnamed street; thence northeasterly to the east corporation line connecting with an unnamed street.

Beginning again on the east corporation line of the City of Springville connecting with an unnamed street; thence in an easterly and northeasterly direction through Section 28, 27, 26, 23 and 24-T84N-R5W to the Linn-Jones County line at a point approximately 300 feet south of the E ¼ Corner of Section 24-T84N-R5W, Linn County, (W ¼ Corner Section 19-T84N-R4W, Jones County).

REVISED: 1-5-82

OFFICIAL DESCRIPTION CHANGE

COUNTY: Linn

CITY OF: Cedar Rapids

ROUTE: US 151

APPROVAL DATE: 11-4-70

Beginning on Williams Boulevard SW at its junction with 16th Avenue SW (US 30); thence northeasterly on Williams Boulevard SW to First Avenue W;

thence easterly and northeasterly on First Avenue W to First Street NE;
thence northeasterly, northerly, and northeasterly on First Avenue E to
the east corporation line.

REVISED: 1978

COMMISSION RESOLUTION

DIVISION: Planning & Research

COMMISSION ORDER NUMBER: 70-1604

SUBMITTED BY: Raymond L. Kassel

MEETING DATE: 11-4-70

Locate US 151 and its extensions in Cedar Rapids, Linn County, Iowa, as
follows:

Beginning at the intersection of First Avenue E and First Street NE; thence
northeasterly on First Avenue E to Tenth Street NE.

NOW THEREFORE: Be it resolved that the Iowa State Highway Commission
approve the revision of US 151 in Cedar Rapids, Linn County, Iowa.

NOTE: To become effective upon adoption of this resolution.

COMMISSION RESOLUTION

DIVISION: Planning & Research

COMMISSION ORDER NUMBER: 69-1273

SUBMITTED BY: Raymond Kassel

MEETING DATE: 9-17-69

Locate US 151 in Cedar Rapids and Marion as follows:

Cedar Rapids:

Beginning on Williams Boulevard SW at its junction with 16th Avenue SW (US 30); thence northeasterly on Williams Boulevard SW to First Avenue W; thence easterly and northeasterly on First Avenue W to First Street NW; thence northwesterly on First Street NE to "A" Avenue NE; thence northeasterly on "A" Avenue NE to Tenth Street NE; thence southeasterly on Tenth Street NE to First Avenue E; thence northeasterly, northerly, and northeasterly on First Avenue E to the east corporation line.

Marion:

Beginning on Marion Boulevard at the west corporation line; thence northeasterly on Marion Boulevard to Seventh Avenue; thence easterly and northeasterly on Seventh Avenue to Tenth Avenue; thence easterly on Tenth Avenue to the east corporation line.

NOW THEREFORE: Be it resolved that the Iowa State Highway Commission approve the revision of US 151 Extension in Cedar Rapids and Marion, Linn County, Iowa.

NOTE: To become effective upon adoption of this resolution.

OFFICIAL DESCRIPTION CHANGE

COUNTY: Linn

ROUTE: US 151

APPROVAL DATE: 9-17-69

Marion:

Beginning on Marion Boulevard at the west corporation line; thence northeasterly on Marion Boulevard to Seventh Avenue; thence easterly and northeasterly on Seventh Avenue to Tenth Avenue; thence easterly on Tenth Avenue to the east corporation line.

Beginning on the east corporation line of the city of Marion connecting with Tenth Avenue; thence east following substantially the section line to a point near the NE Corner Section 4-T83N-R6W; thence in a northeasterly and easterly direction through Section 34, 35, 36, and 25-T84N-R6W, and Section 30 and 29-T84N-R5W to the west corporation line of the Town of Springville, connecting with Main Street.

Beginning again on the east corporation line of the Town of Springville connecting with Main Street; thence in an easterly and northeasterly direction through Section 28, 27, 26, 23 and 24-T84N-R5W, to the Linn-Jones County Line at a point approximately 300 feet south of the E $\frac{1}{4}$ Corner of Section 24-T84N-R5W, Linn County (W $\frac{1}{4}$ Corner Section 19-T84N-R4W, Jones County).

REVISED: 1978

OFFICIAL DESCRIPTION CHANGE

COUNTY: Linn

CITY OF: Springville

ROUTE: US 151

APPROVAL DATE: 2-5-36

Commencing on Main Street at the west corporation line; thence northeasterly on Main Street to the east corporation line.

REVISED: 1978