

OFFICIAL DESCRIPTION CHANGE**OFFICE:** Transportation Data**EFFECTIVE DATE:** 10-11-2004**ENTERED BY:** Stefani Wonders**ENTERED DATE:** 02-10-2005**DISCUSSION/BACKGROUND:**

Transfer of jurisdiction agreement number 2003-TJ-004, between Jones County and the Iowa Department of Transportation, transferred that portion of US 151 from 840 feet south of the N $\frac{1}{4}$ Corner of Section 4-T85N-R3W; thence in a northerly and northeasterly direction through Section 4-T85N-R3W and Sections 33, 34, and 27-T86N-R3W to the south corporation line of Monticello (approximately 1230 feet north and 260 feet east of the SW Corner of Section 27-T86N-R3W) connecting with Main Street to county jurisdiction on October 11, 2004.

Transfer of jurisdiction agreement number 2003-TJ-005, between the City of Monticello and the Iowa Department of Transportation, transferred that portion of US 151 from Main Street at the south corporation line; thence northeasterly on Main Street to the east corporation line (approximately 860 feet south of the Center of Section 22-T86N-R3W) to city jurisdiction on October 11, 2004.

Transfer of jurisdiction agreement number 2003-TJ-004, between Jones County and the Iowa Department of Transportation, transferred that portion of US 151 from the east corporation line of Monticello connecting with Main Street; thence northeasterly through Sections 22, 23, and 14-T86N-R3W to the junction of new US 151 alignment (approximately 1420 feet north and 600 feet east of the S $\frac{1}{4}$ Corner of said Section 14 to county jurisdiction on October 11, 2004.

PROPOSAL/ACTION RECOMMENDATION:

It is recommended that the old description of US 151 and its extensions in Jones County be deleted and the new description be included in the Primary Road System.

New Description – US 151 and its extensions in Jones County described as follows:

Beginning on the Jones–Linn County line at a point approximately 300 feet south of the W $\frac{1}{4}$ Corner of Section 19–T84N–R4W, Jones County (E $\frac{1}{4}$ Corner of Section 24–T84N–R5W, Linn County); thence in a northeasterly direction through Section 19–T84N–R4W to a point approximately 1320 feet east of the W $\frac{1}{4}$ Corner of Section 19–T84N–R4W; thence easterly following substantially the center section line of Sections 19, 20 (junction Iowa 1), 21, and 22–T84N–R4W to near the Center of Section 22–T84N–R4W; thence in a northeasterly direction through Sections 22, 23, and 14–T84N–R4W to approximately 1330 feet south of the NE Corner of Section 14–T84N–R4W; thence northerly following substantially the section line of Sections 13 and 12–T84N–R4W to the south corporation line of Anamosa (approximately 1090 feet south of the NW Corner of Section 12–T84N–R4W) connecting with an unnamed street (junction Iowa 64).

Anamosa:

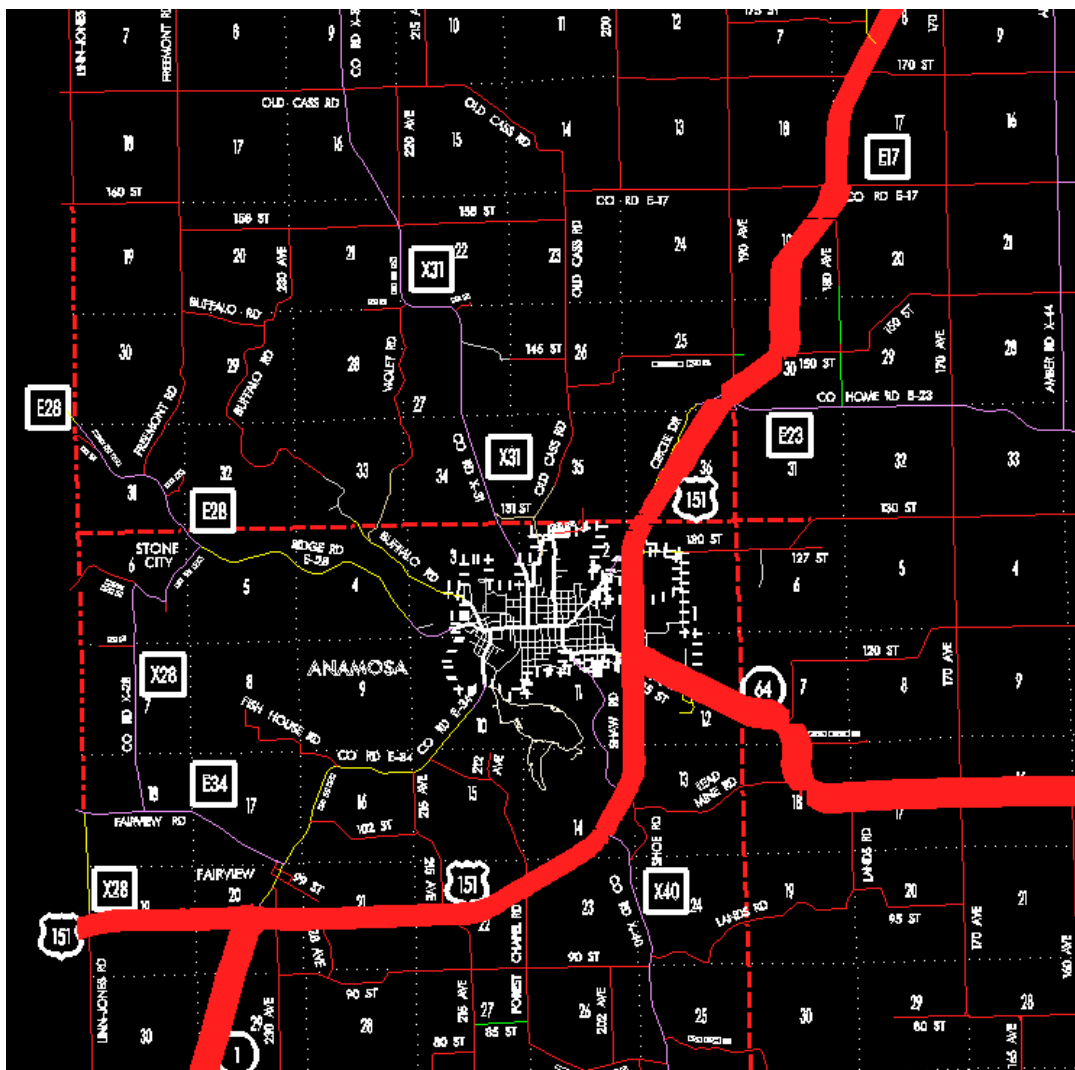
Beginning on the south corporation line connecting with an unnamed street (junction Iowa 64); thence northerly to the north corporation line (approximately 430 feet north of the NW Corner of Section 12–T84N–R4W).

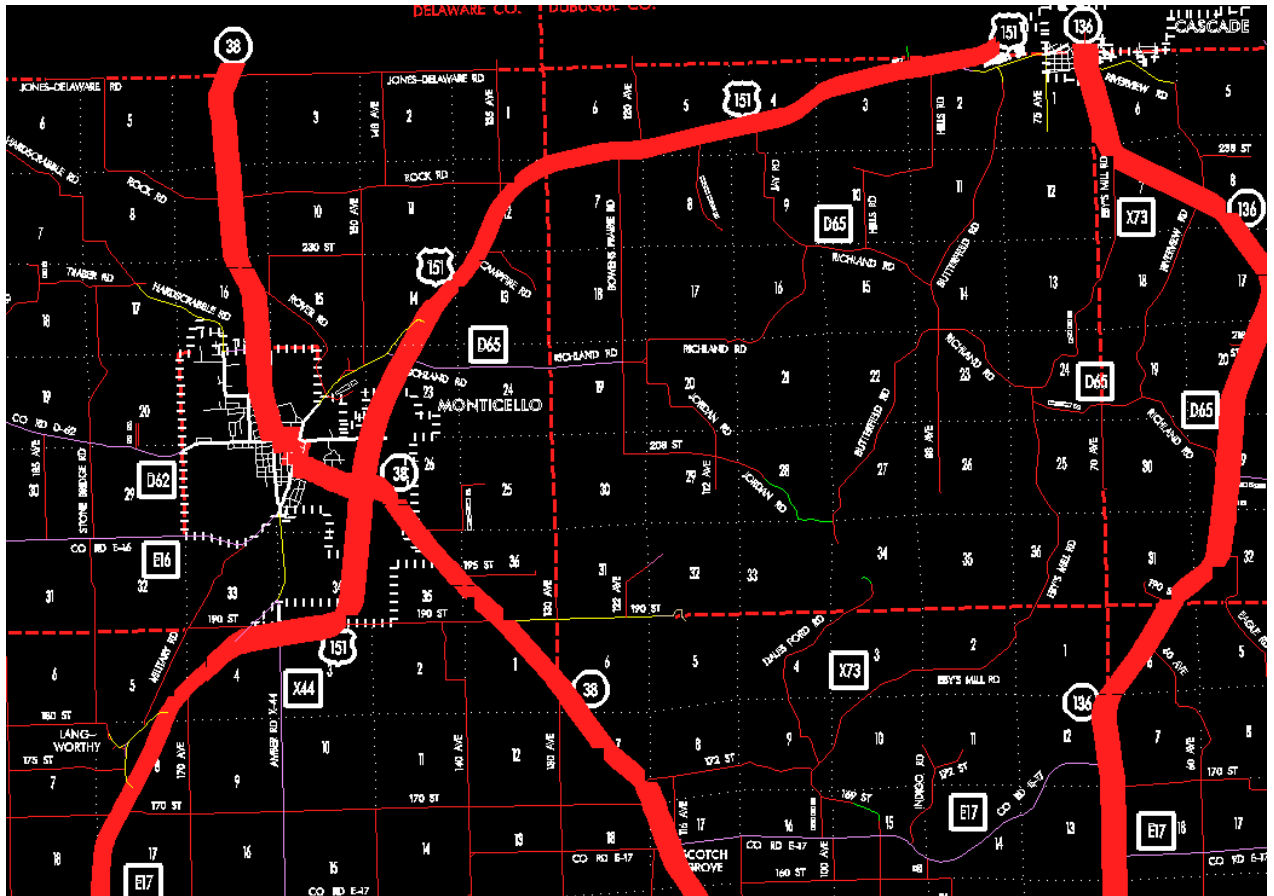
Beginning again on the north corporation line of Anamosa connecting with unnamed street ; thence northerly following substantially the section line of Section 1–T84N–R4W to approximately 1430 feet south of the NW Corner of Section 1–T84N–R4W; thence in a northeasterly direction through Section 1–T84N–R4W and Sections 36 and 25–T85N–R4W and Section 30–T85N–R3W to a point approximately 400 feet south of the center of Section 30–T85N–R3W; thence in a northerly and northeasterly direction through Sections 30, 19, 20, 17, 8, 5, 4, and 3–T85N–R3W to the south corporation line of Monticello (near the N $\frac{1}{4}$ Corner of said Section 3).

Monticello:

Beginning on the south corporation line; thence northeasterly and northerly to the north corporation line (approximately 2570 feet south and 1390 feet east of the NW Corner of Section 23-T86N-R3W).

Beginning again on the north corporation line of Monticello; thence northerly and northeasterly through Sections 23, 14, 13, and 12-T86N-R3W to near the NE Corner of Section 12-T86N-R3W; thence easterly and northeasterly through Sections 7, 6, 5, 4, 3, 2-T86N-R2W to the Jones-Dubuque County line approximately 1060 feet west of the NE Corner of Section 2-T86N-R2W, Jones County (SE Corner of Section 35-T87N-R2W, Dubuque County).





STAFF ACTION

OFFICE: Transportation Data

STAFF ACTION NUMBER: S-03-0781

SUBMITTED BY: Peggi Knight

SUBMITTAL DATE: 04-15-2003

DISCUSSION/BACKGROUND:

Transfer of jurisdiction agreement number 2001-TJ-005, between Jones County and the Iowa Department of Transportation, transferred that portion of US 151 from approximately 250 feet south of the N $\frac{1}{4}$ Corner of Section 2-T86N-R2W then southeasterly and northeasterly to the west corporation line of Cascade (approximately N $\frac{1}{4}$ Corner of Section 1-

T86N–R2W), connecting with First Avenue West to county jurisdiction on November 4, 2002.

Transfer of jurisdiction agreement number 2001–TJ–006, between the City of Cascade and the Iowa Department of Transportation, transferred that portion of US 151 from the west corporation line (approximately N $\frac{1}{4}$ Corner of Section 1–T86N–R2W), connecting with First Avenue West; thence easterly on First Avenue West approximately 350 feet to a point on the Jones–Dubuque County line to city jurisdiction on November 4, 2002.

PROPOSAL/ACTION RECOMMENDATION:

It is recommended that the old description of US 151 and its extensions in Jones County be deleted and the new description be included in the Primary Road System.

New Description – US 151 and its extensions in Jones County described as follows:

Beginning on the Jones–Linn County line at a point approximately 300 feet south of the W $\frac{1}{4}$ Corner of Section 19–T84N–R4W, Jones County (E $\frac{1}{4}$ Corner of Section 24–T84N–R5W, Linn County); thence in a northeasterly direction through Section 19–T84N–R4W to a point approximately 1320 feet east of the W $\frac{1}{4}$ Corner of Section 19–T84N–R4W; thence easterly following substantially the center section line of Sections 19, 20 (junction Iowa 1), 21, and 22–T84N–R4W to near the Center of Section 22–T84N–R4W; thence in a northeasterly direction through Sections 22, 23, and 14–T84N–R4W to approximately 1330 feet south of the NE Corner of Section 14–T84N–R4W; thence northerly following substantially the section line of Sections 13 and 12–T84N–R4W to the south corporation line of Anamosa (approximately 1220 feet south of the NW Corner of Section 12–T84N–R4W) connecting with an unnamed street (junction Iowa 64).

Anamosa:

Beginning on the south corporation line (approximately 1220 feet south of the NW Corner of Section 12-T84N-R4W) connecting with an unnamed street (junction Iowa 64); thence northerly to the north corporation line (approximately 430 feet north of the NW Corner of Section 12-T84N-R4W).

Beginning again on the north corporation line of Anamosa (approximately 430 feet north of the NW Corner of Section 12-T84N-R4W) connecting with unnamed street ; thence northerly following substantially the section line of Section 1-T84N-R4W to approximately 1430 feet south of the NW Corner of Section 1-T84N-R4W; thence in a northeasterly direction through Section 1-T84N-R4W and Sections 36 and 25-T85N-R4W and Section 30-T85N-R3W to a point approximately 400 feet north of the center of Section 30-T85N-R3W; thence in a northerly and northeasterly direction through Sections 30, 19, 20, 17, 8, 5, and 4-T85N-R3W and Sections 33, 34, and 27-T86N-R3W to the south corporation line of Monticello (approximately 1230 feet north and 260 feet east of the SW Corner of Section 27-T86N-R3W) connecting with Main Street.

Monticello:

Beginning on Main Street at the south corporation line; thence northeasterly on Main Street to the east corporation line (approximately 860 feet south of the Center of Section 22-T86N-R3W).

Beginning again on the east corporation line of Monticello connecting with Main Street; thence northeasterly through Sections 22, 23, 14, 13, and 12-T86N-R3W to near the NE Corner of Section 12-T86N-R3W; thence easterly and northeasterly through Sections 7, 6, 5, 4, 3, 2-T86N-R2W to the Jones-Dubuque County line approximately 1060 feet west of the NE Corner of Section 2-T86N-R2W, Jones County (SE Corner of Section 35-T87N-R2W, Dubuque County).

OFFICIAL DESCRIPTION CHANGE

COUNTY: Jones

ROUTE: US 151

STAFF ACTION NUMBER: S-87-1543

APPROVAL DATE: 5-13-87

New description – US 151 and its extensions in Jones County described as follows:

Beginning on the Jones-Linn County line at a point approximately 300 feet south of the W $\frac{1}{4}$ Corner of Section 19-T84N-R4W, Jones County (E $\frac{1}{4}$ Corner of Section 24-T84N-R5W, Linn County); thence in a northeasterly direction through Section 19-T84N-R4W to a point approximately $\frac{1}{4}$ mile east of the W $\frac{1}{4}$ Corner of Section 19-T84N-R4W; thence easterly following substantially the center section line of Sections 19, 20 (junction Iowa 1), 21, and 22-T84N-R4W to a point approximately 2300 feet east of the W $\frac{1}{4}$ Corner of Section 22-T84N-R4W; thence in a northeasterly direction through Sections 22, 23, and 14-T84N-R4W to a point approximately 650 feet south of the NE Corner of Section 14-T84N-R4W; thence northerly following substantially the section line of Sections 13 and 12-T84N-R4W to the south corporation line of Anamosa connecting with an unnamed street (junction Iowa 64).

Anamosa:

Beginning on the south corporation line connecting with an unnamed street; thence northerly to the north corporation line connecting with an unnamed street.

Beginning again on the north corporation line of Anamosa connecting with an unnamed street; thence northerly following substantially the section line of Section 1-T84N-R4W to a point approximately $\frac{1}{4}$ mile south of the NW Corner of Section 1-T84N-R4W; thence in a northeasterly direction through Section 1-T84N-R4W and Sections 36 and 25-T85N-R4W and Section 30-T85N-R3W to a point approximately 400 feet north of the center of Section 30-T85N-R3W; thence in a northerly and northeasterly direction through Sections 30, 19, 20, 17, 8,

5, and 4-T85N-R3W and Sections 33, 34, and 27-T86N-R3W to the south corporation line of Monticello connecting with Main Street.

Monticello:

Beginning on Main Street at the south corporation line; thence northeasterly on Main Street to Military Road; thence continuing northeasterly on Military Road to the east corporation line.

Beginning again on the east corporation line of Monticello connecting with Military Road; thence in a northeasterly direction through Sections 22, 23, 14, 13, and 12-T86N-R3W to a point on the east line of Section 12-T86N-R3W and continuing in an easterly and northeasterly direction through Sections 7, 6, 5, 4, 3, 2, and 1-T86N-R2W to the Jones-Dubuque County line at a point approximately 500 feet west to the N $\frac{1}{4}$ Corner of Section 1-T86N-R2W, Jones County (S $\frac{1}{4}$ Corner Section 36-T87N-R2W, Dubuque County); thence easterly along the Jones-Dubuque County line following substantially the section line said Section 1 to the west corporation line of Cascade connecting with First Avenue West.

Cascade:

Beginning on First Avenue West at the west corporation line; thence easterly on First Avenue West approximately 350 feet to a point on the Jones-Dubuque County line.

COMMISSION ORDER

DIVISION: Planning & Research

COMMISSION ORDER NUMBER: PR-79-272

SUBMITTED BY: C.I. MacGillivray

MEETING DATE: 11-2-78

DISCUSSION/BACKGROUND:

Due to a review of our Primary Road System records, US 151 in Jones County should be deleted from the Primary Road System and the new description added should be officially included into the Primary Road System.

US 151, begins on the Jones–Linn County line approximately 5 miles southwest of Anamosa, Iowa and travels easterly and northeasterly via Anamosa and Monticello to the Jones–Dubuque County line in Cascade, Iowa.

PROPOSAL/ACTION RECOMMENDATION:

Locate US 151 and its extension in Jones County as follows:

Beginning on the Jones–Linn County line at a point approximately 300 feet south of the W $\frac{1}{4}$ Corner of Section 19–T84N–R4W, Jones County (E $\frac{1}{4}$ Corner of Section 24–T84N–R5W, Linn County); thence in a northeasterly direction through Section 19–T84N–R4W to a point approximately $\frac{1}{4}$ mile east of the W $\frac{1}{4}$ Corner of Section 19–T84N–R4W; thence easterly following substantially the center section line of Sections 19, 20 (junction Iowa 1), 21 and 22–T84N–R4W to a point approximately 2300 feet east of the W $\frac{1}{4}$ Corner of Section 22–T84N–R4W; thence in a northeasterly direction through Sections 22, 23 and 14–T84N–R4W to a point approximately 650 feet south of the NE Corner of Section 14–T84N–R4W; thence northerly following substantially the Section line of Sections 13 and 12–T84N–R4W to the south corporation line of the City of Anamosa connecting with an unnamed street (junction Iowa 64).

Anamosa:

Beginning on the south corporation line connecting with an unnamed street; thence northerly to the north corporation line connecting with an unnamed street.

Beginning again on the north corporation line of the City of Anamosa connecting with an unnamed street; thence northerly following substantially the section line of Section 1–T84N–R4W to a point

approximately $\frac{1}{4}$ mile south of the NW Corner of Section 1–T84N–R4W; thence in a northeasterly direction through Section 1–T84N–R4W and Sections 36 and 25–T85N–R4W and Section 30–T85N–R3W to a point approximately 400 feet north of the center of Section 30–T85N–R3W; thence in a northerly and northeasterly direction through Sections 30, 19, 20, 17, 8, 5, and 4–T85N–R3W and Sections 33, 34, and 27–T86N–R3W to the south corporation line of the City of Monticello, connecting with an unnamed street.

Monticello:

Beginning on the south corporation line connecting with an unnamed street; thence northeasterly to the east corporation line connecting with an unnamed street.

Beginning again on the east corporation line of the City of Monticello, connecting with an unnamed street; thence in a northeasterly direction through Sections 22, 23, 14, 13 and 12–T86N–R3W to a point on the east line of Section 12–T86N–R3W and continuing in an easterly and northeasterly direction through Sections 7, 6, 5, 4, 3, 2, and 1–T86N–R2W to the Jones–Dubuque County line at a point approximately 500 feet west of the N $\frac{1}{4}$ Corner of Section 1–T86N–R2W, Jones County (S $\frac{1}{4}$ Corner Section 36–T87N–R2W, Dubuque County) thence easterly along the Jones–Dubuque County line following substantially the section line said Section 1 to the west corporation line of the City of Cascade, connecting with an unnamed street.

Cascade:

Beginning on the west corporation line connecting with an unnamed street; thence easterly to a point on the Jones–Dubuque County line.
(NOTE: See Dubuque County).

NOW, THEREFORE: Be it resolved that the Iowa Department of Transportation approve the location of US 151 in Jones County, Iowa.

NOTE: To become effective upon the adoption of this resolution.

REVISED: 5-13-87

OFFICIAL DESCRIPTION CHANGE

COUNTY: Jones

ROUTE: US 151

APPROVAL DATE: 11-4-64

Beginning on the Jones-Linn County line at a point approximately 300 feet south of the W $\frac{1}{4}$ Corner Section 19-T84N-R4W, Jones County (E $\frac{1}{4}$ Corner Section 24-T84N-R5W, Linn County); thence in a northeasterly direction to a point approximately $\frac{1}{4}$ mile east of the W $\frac{1}{4}$ Corner Section 19-T84N-R4W; thence in an easterly direction following substantially the quarter section line through Sections 19, 20, 21 and 22-T84N-R4W to a point approximately 2,300 feet east of the W $\frac{1}{4}$ Corner Section 22-T84N-R4W; thence northeasterly through Sections 22, 23, 14 and 13-T84N-R4W to a point approximately 400 feet south of the N $\frac{1}{4}$ Corner Section 13-T84N-R4W; thence in a northerly direction following substantially the section line to a point approximately 1,650 feet north of the W $\frac{1}{4}$ Corner Section 12-T84N-R4W (junction Iowa 64 and Iowa 428); thence in a northerly direction following substantially the section line to a point approximately 480 feet east and 515 feet south of the NW Corner Section 1-T84N-R4W; thence in a northeasterly direction through Section 1-T84N-R4W, Sections 36 and 25-T85N-R4W, and Section 30-T85N-R3W to a point approximately 400 feet north of the center of Section 30-T85N-R3W; thence north following substantially the quarter section line to a point approximately $\frac{1}{4}$ mile north of the S $\frac{1}{4}$ Corner Section 19-T85N-R3W; thence in a northeasterly direction to a point approximately 300 feet south of the NE Corner Section 19-T85N-R3W; thence north following substantially the section line to a point approximately 500 feet north of the E $\frac{1}{4}$ Corner Section 18-T85N-R3W; thence in a northeasterly and northerly direction through Sections 17 and 8-T85N-R3W to a point on the south side of the Chicago, Milwaukee, St. Paul and Pacific Railroad approximately $\frac{1}{4}$ mile south and 1,500 feet east

of the NW Corner Section 8–T85N–R3W; thence in a northeasterly and northerly direction along the east side of said railroad and substantially parallel thereto through Sections 8, 5 and 4–T85N–R3W and Sections 33, 34 and 27–T86N–R3W to a point approximately 1,000 feet north of the SW Corner Section 27–T86N–R3W; thence in a northeasterly direction to the south corporation line of the City of Monticello, connecting with Main Street.

Beginning again on the east corporation line of the City of Monticello, connecting with Military Road; thence in a northeasterly direction through Sections 22, 23, 14, 13 and 12–T86N–R3W to a point near the NE Corner Section 12–T86N–R3W; thence in an easterly and northeasterly direction through Sections 7, 6, 5, 4, 3, 2 and 1–T86N–R2W to the Jones–Dubuque County Line at a point approximately 500 feet west of the N ¼ Corner Section 1–T86N–R2W, Jones County (S ¼ Corner Section 36–T87N–R2W, Dubuque County); thence east along the Jones–Dubuque County Line to the west corporation line of the Town of Cascade connecting with Main Street (S ¼ Corner Section 36–T87N–R2W, Dubuque County).

REVISED: 11–2–78

OFFICIAL DESCRIPTION CHANGE

COUNTY: Jones

CITY OF: Monticello

ROUTE: US 151

APPROVAL DATE: 2–5–36

Commencing on Main Street at the south corporation line; thence northeasterly on Main Street to Military Road; thence northeasterly on Military Road to the east corporation line.

REVISED: 11–2–78

OFFICIAL DESCRIPTION CHANGE

COUNTY: Jones

CITY OF: Cascade

ROUTE: US 151

APPROVAL DATE: 2-5-36

See Dubuque County.

NOTE: Revised from US 161 to US 151 October 11, 1937.

REVISED: 11-4-64