

OFFICE: Transportation Data
EFFECTIVE DATE: 03-15-2005
ENTERED BY: Stefani Wonders
ENTERED DATE: 12-31-2003

New Description – US 218 and its extensions in Lee County described as follows:

Keokuk:

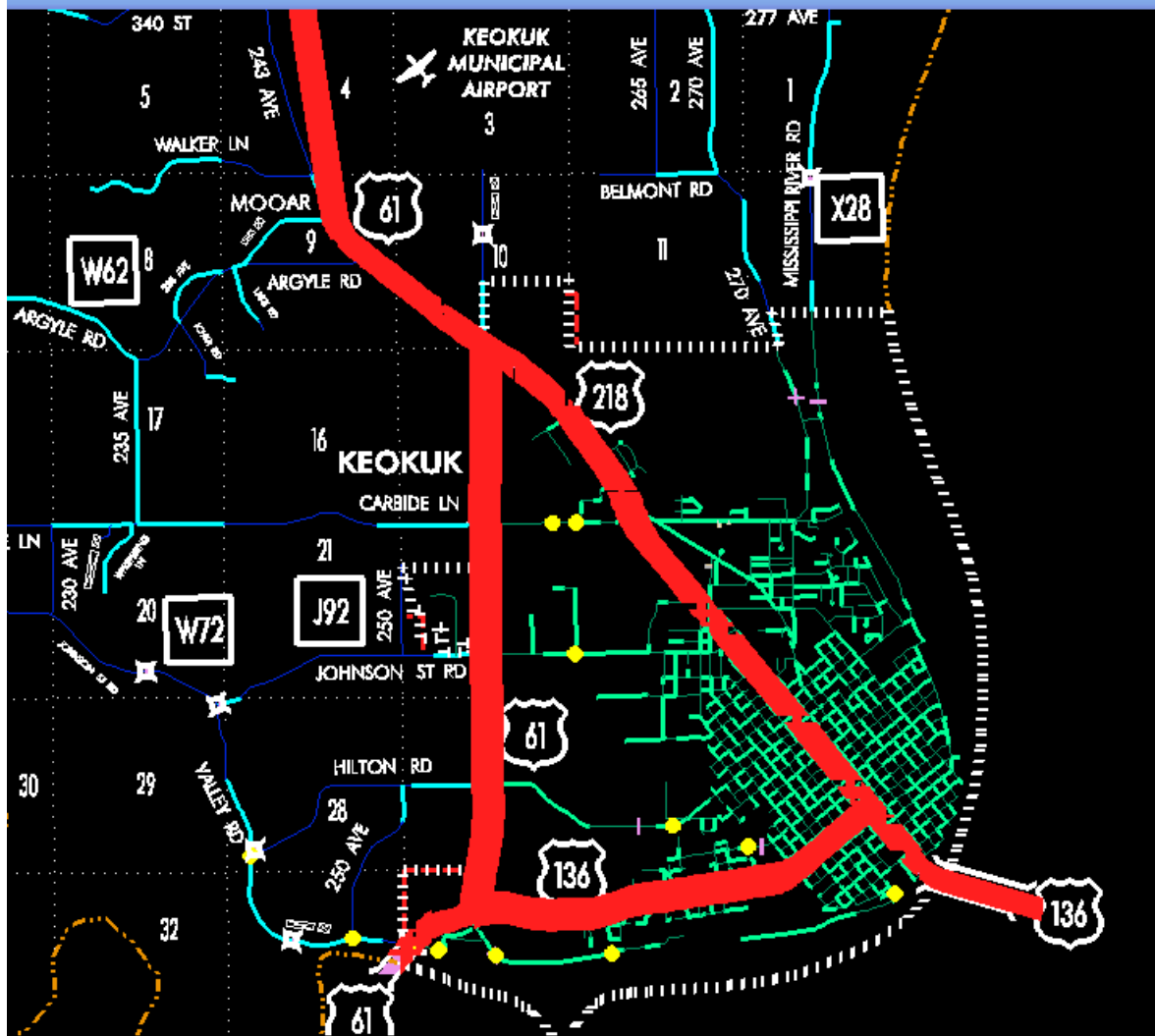
Beginning on Main Street at 7th Street (junction US 136); thence northwest on Main Street to the north corporation line (south junction US 61).

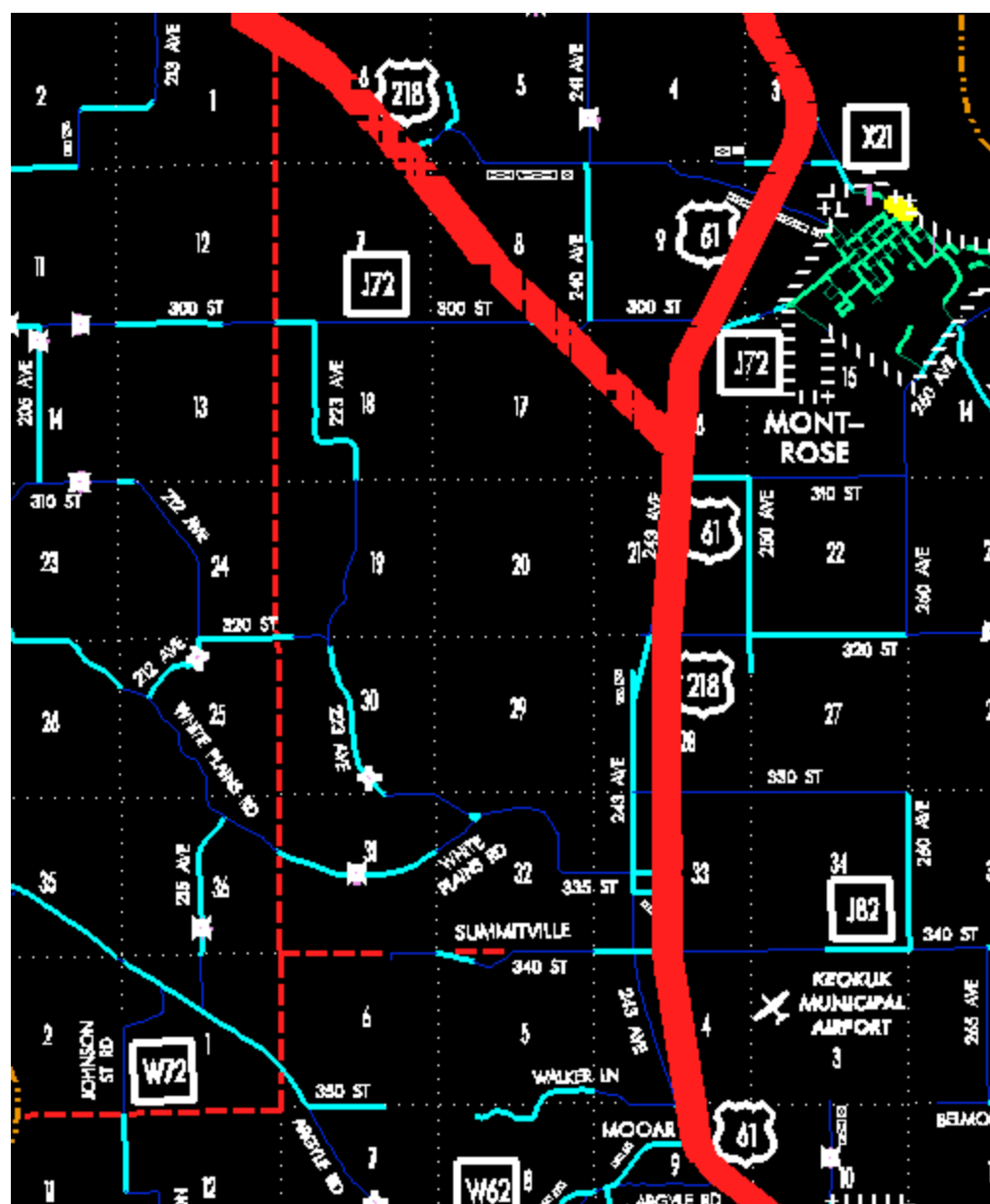
Beginning again on the north corporation line of the City of Keokuk connecting with an unnamed street at Main Street; thence in a northwesterly direction through Sections 10 and 9 to near W $\frac{1}{4}$ Corner NE $\frac{1}{4}$ Section 9-T65N-R5W; thence northerly through center Sections 4-T65N-R5W and 33, 28, 21, and 16-T66N-R5W to near N $\frac{1}{4}$ Corner SW $\frac{1}{4}$ Section 16-T66N-R5W (north junction US 218); thence in a northwesterly direction through Sections 16, 17, 8, 7 and 6-T66N-R5W, Section 1-T66N-R6W and Sections 36, 35, 26, 23, 22, 15, and 16-T67N-R6W to approximately 1166 feet east and 294 feet south of the NW Corner of said Section 16; thence northeasterly through Sections 16, 9, and 4-T67N-R6W to a point near the N $\frac{1}{4}$ Corner of said Section 4; thence northwesterly through said Section 4 and Sections 33-T68N-R6W to the east corporation line of Donnellson (approximately 1285 feet east and 660 feet south of the NW Corner of said Section 33) connecting with an unnamed street.

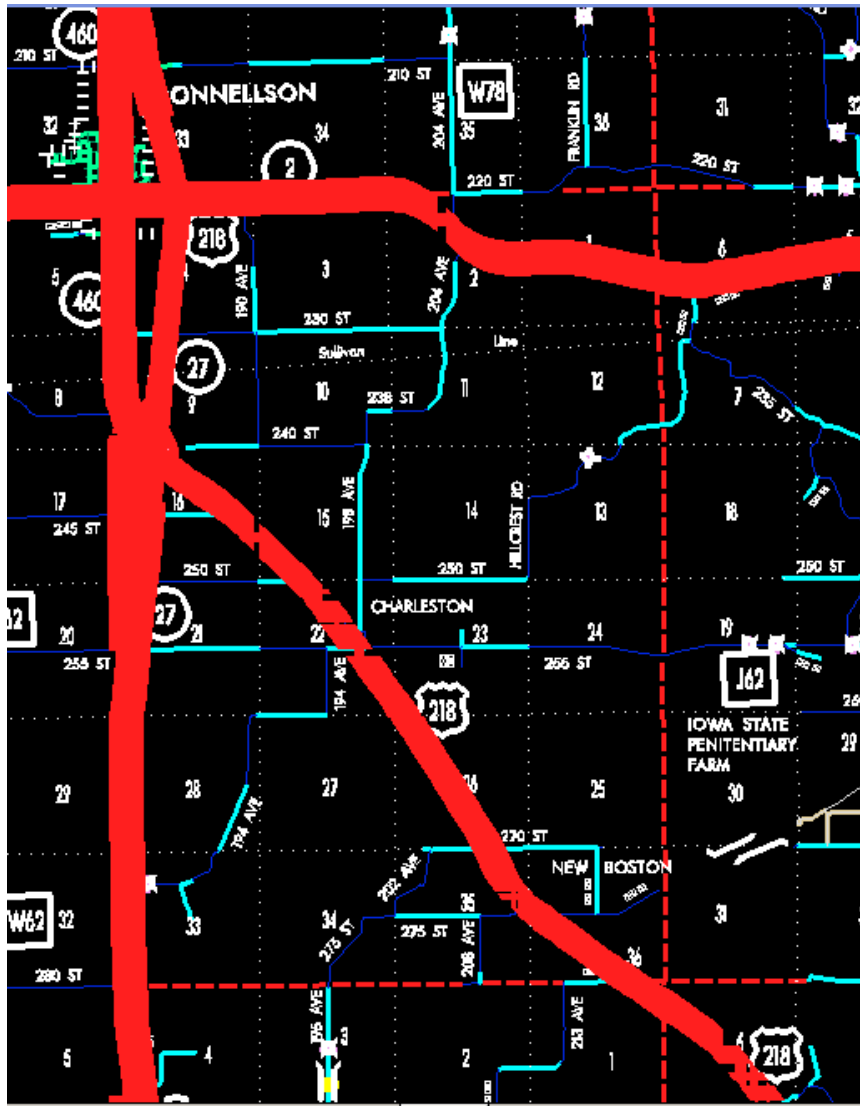
Donnellson:

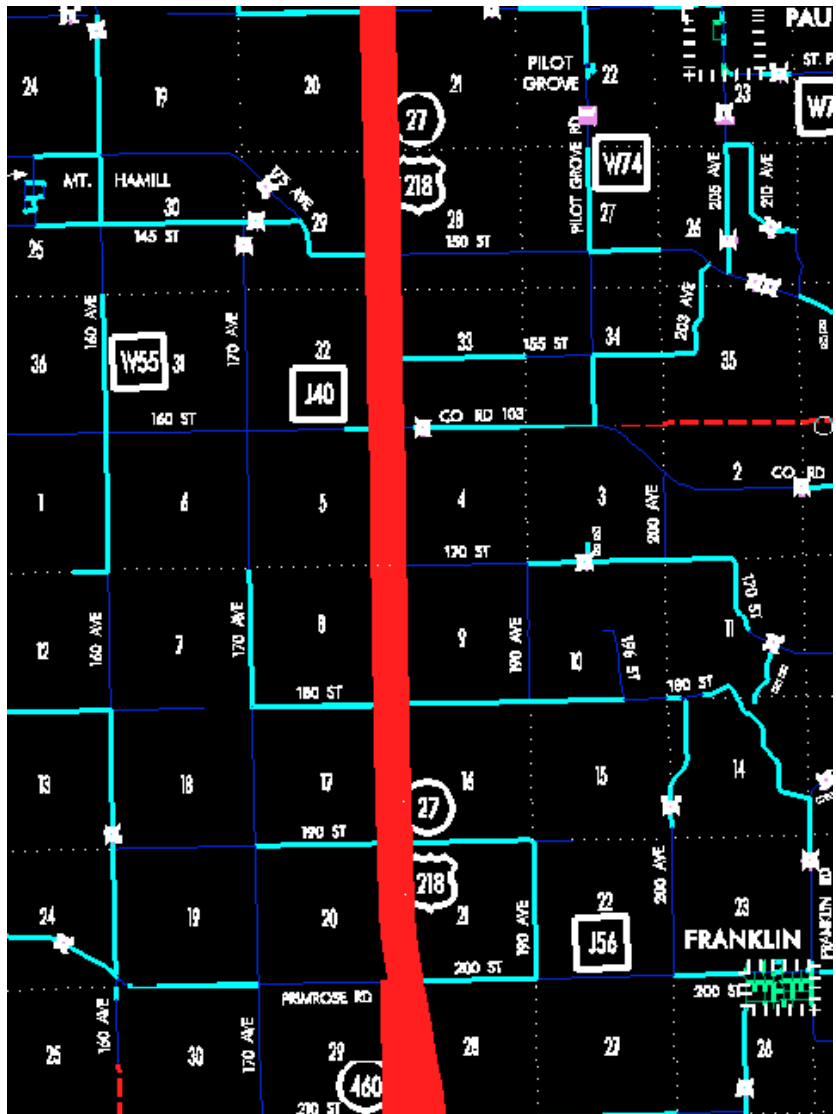
Beginning on the east corporation line connecting with an unnamed street; thence northwesterly to the north corporation line (approximately 1129 feet east of the NW Corner of Section 33-T68N-R6W).

Beginning again on the north corporation line of Donnellson connecting with an unnamed street; thence northwesterly through Sections 28 and 21-T68N-R6W to a point approximately 1910 feet north of the SW Corner of said Section 21; thence northerly following substantially the west section line of Sections 21, 16, 9, and 4-T68N-R6W and Sections 33, 28, 21, 16, 9, and 4-T69N-R6W to the Lee-Henry County line, at a point near the NW Corner of Section 4-T69N-R6W, Lee County (SW Corner of Section 33-T70N-R6W, Henry County).









DISCUSSION/BACKGROUND:

Due to the relocation of a section of US 218 in Lee County, in 1993, the official description of US 218 in Lee County should be revised to reflect this change.

At the same time the old portion of US 61 /US 218 became Unsigned Iowa 960.

PROPOSAL/ACTION RECOMMENDATION:

It is recommended the old description of US 218 in Lee County be deleted from the Primary Road System and the new description, as described in the attachment, be included in the Primary Road System.

New Description – US 218 and its extensions in Lee County described as follows:

Keokuk:

Beginning on Main Street at 7th Street (junction US 136); thence northwest on Main Street to the north corporation line (south junction US 61).

Beginning again on the north corporation line of the City of Keokuk connecting with an unnamed street at Main Street; thence in a northwesterly direction through Sections 10 and 9 to near W $\frac{1}{4}$ Corner NE $\frac{1}{4}$ Section 9-T65N-R5W; thence northerly through center Sections 4-T65N-R5W and 33, 28, 21, and 16-T66N-R5W to near N $\frac{1}{4}$ Corner SW $\frac{1}{4}$ Section 16-T66N-R5W (north junction US 218); thence in a northwesterly direction through Sections 16, 17, 8, 7 and 6-T66N-R5W, Section 1-T66N-R6W and Sections 36, 35, 26, 23, 22, 15, 16-T67N-R6W to a point approximately 2800 feet south of the NW Corner Section 9-T67N-R6W; thence northerly through the east part of Section 8-T67N-R6W to a point near the NE Corner said Section 8; thence north following substantially the section line of Section 4-T67N-R6W to the south corporation line of Donnellson connecting with Main Street.

Donnellson:

Beginning on Main Street at the south corporation line; thence north on Main Street to the north corporation line.

Beginning again on the north corporation line of Donnellson connecting with Main Street; thence north following substantially the section line of Sections 28, 21 and 16-T68N-R6W to a point approximately 1100 feet north of the SW Corner of said Section 16; thence north through the east part of Sections 17, 8 and 5-T68N-R6W to a point approximately 1600 feet north of the SE Corner Section 5-T68N-R6W; thence north following substantially the section line of Section 4-T68N-R6W (junction Iowa 103) and Sections 33, 28, 21, 16 (junction Iowa 16), and 9-T69N-R6W to a point approximately 200 feet north of the SW Corner Section 9-T69N-R6W; thence north through the east part of Sections 8 and 5-T69N-R6W to a point approximately 300 feet south of the NE Corner Section 5-T69N-R6W; thence north following substantially the section line of

Section 4-T69N-R6W to the Lee-Henry County line, at a point near the NW Corner of Section 4-T69N-R6W, Lee County (SW Corner of Section 33-T70N-R6W, Henry County).

OFFICIAL DESCRIPTION CHANGE

COUNTY: Lee

ROUTE: US 218

STAFF ACTION NUMBER: S-87-1538

APPROVAL DATE: 5-13-87

New description – US 218 and its extensions in Lee County described as follows:

Keokuk:

Beginning on Main Street at 7th Street (junction US 136); thence northwest on Main Street to the west corporation line.

Beginning again on the west corporation line of Keokuk connecting with Main Street; thence in a northwesterly direction through Sections 15 (south junction US 61), 10, 9, and 4-T65N-R5W and in a northerly direction through Sections 33, 28, 21, and 16-T66N-R5W (north junction US 61); thence in a northwesterly direction through Sections 16, 17, 8, 7, and 6-T66N-R5W, Section 16, 17, 8, 7, and 6-T66N-R5W, Section 1-T66N-R6W and Sections 36, 35, 26, 23, 22, 15, 16 and 9-T67N-R6W to a point approximately 2800 feet south of the NW Corner Section 9-T67N-R6W; thence northerly through the east part of Section 8-T67N-R6W to a point near the NE Corner said Section 8; thence north following substantially the section line of Section 4-T67N-R6W to the south corporation line of Donnellson connecting with Main Street.

Donnellson:

Beginning on Main Street at the south corporation line; thence north on Main Street to the north corporation line.

Beginning again on the north corporation line of Donnellson connecting with Main Street; thence north following substantially the section line of Sections 28, 21, and 16-T68N-R6W to a point approximately 1100 feet north of the SW Corner of said Section 16; thence north through the east part of Sections 17, 8, and 5-T68N-R6W to a point approximately 1600 feet north of the SE Corner Section 5-T68N-R6W; thence north following substantially the section line of Section 4-T68N-R6W (junction Iowa 103) and Sections 33, 28, 21, 16 (junction Iowa 16), and 9-T69N-R6W to a point approximately 200 feet north of the SW Corner Section 9-T69N-R6W; thence north through the east part of Sections 8 and 5-T69N-R6W to a point approximately 300 feet south of the NE Corner Section 5-T69N-R6W; thence north following substantially the section line of Section 4-T69N-R6W to the Lee-Henry County line at a point near the NW Corner of Section 4-T69N-R6W, Lee County (SW Corner of Section 33-T70N-R6W, Henry County).

STAFF ACTION

OFFICE: Transportation Inventory

SUBMITTED BY: Patrick R. Cain

DISCUSSION/BACKGROUND:

US 218 begins in Keokuk and travels in a northwesterly direction to the Lee-Henry County line via the cities of Keokuk and Donnellson, Iowa.

The official description for US 218 in Lee County was found to be incorrect in our official records. The existing description should be replaced with the corrected version.

PROPOSAL/ACTION RECOMMENDATION:

It is recommended to approve deleting the present description of US 218 in Lee County from the primary road system and approve including the attached new description of US 218 in the primary road system.

Locate US 218 and its extensions in Lee County as follows:

Keokuk:

Beginning on an unnamed street at Seventh Street (junction US 136); thence northwesterly to the west corporation line connecting with an unnamed street.

Beginning again on the west corporation line of the City of Keokuk, connecting with an unnamed street; thence in a northwesterly direction through Sections 15 (south junction US 61); 10, 9, and 4-T66N-R5W and in a northerly direction through Sections 33, 23, 21, and 16-T66N-R5W (north junction US 61); thence in a northwesterly direction through Sections 16, 17, 8, 7, and 6-T66N-R5W, Section 1 T-66N-R6W, and Sections 36, 35, 26, 23, 22, 15, 16, and 9-T67N-R6W to a point approximately 2800 feet south of the NW Corner Section 9-T67N-R6W; thence northerly through the east part of Section 8-T67N-R6W to a point near the NE Corner said Section 8; thence northerly following substantially the section line of Section 4-T67N-R6W to the south corporation line of the City of Donnellson, connecting with an unnamed street.

Donnellson:

Beginning at the south corporation line connecting with an unnamed street; thence northerly to the north corporation line connecting with an unnamed street.

Beginning again on the north corporation line of the City of Donnellson, connecting with an unnamed street; thence north following substantially the section line of Sections 28, 21, and 16-T68N-R6W to a point approximately 1100 feet north of the SW Corner of said Section 16; thence northerly through the east part of Sections 17, 8, and 5-T68N-R6W to a point approximately 1600 feet north of the SE Corner Section 5-T68N-R6W; thence northerly following substantially the section line of Section 4-T68N-R6W (junction Iowa 103) and Sections 33, 28, 21, 16 (junction Iowa 16) and 9-T69N-R6W to a point approximately 200 feet north of the SW Corner Section 9-T69N-R6W; thence

northerly through the east part of Sections 8 and 5-T69N-R6W to a point approximately 300 feet south of the NE Corner Section 5-T69N-R6W; thence northerly following substantially the section line of Section 4-T69N-R6W to the Lee-Henry County line at a point near the NW Corner of Section 4-T69N-R6W, Lee County (SW Corner of Section 33-T70N-R6W, Henry County).

REVISED: 5-13-87

COMMISSION ORDER

DIVISION: Planning & Research

COMMISSION ORDER NUMBER: PR-79-272

SUBMITTED BY: C.I. MacGillivray

MEETING DATE: 11-2-78

DISCUSSION/BACKGROUND:

Due to a review of our Primary Road System records, US 218 in Lee County should be deleted from the Primary Road System and the new description added should be officially included into the Primary Road System.

US 218 begins in Keokuk and travels in a northwesterly direction to the Lee-Henry County line via the cities of Keokuk and Donnellson, Iowa.

PROPOSAL/ACTION RECOMMENDATION:

Locate US 218 and its extensions in Lee County, Iowa, as follows:

Keokuk:

Beginning on an unnamed street at Seventh Street (junction US 136); thence northwesterly to the west corporation line connecting with an unnamed street.

Beginning again on the west corporation of the City of Keokuk, connecting with an unnamed street thence in a northwesterly direction through Sections 15 (south junction US 61); 10, 9, and 4-T65N-R5W and in a northerly direction through Sections 33, 28, 21, and 16-T66N-R5W (north junction US 61); thence in a northwesterly direction through Sections 16, 17, 8, 7, and 6-T66N-R5W, Section 1-T66N-R6W, and Sections 36, 35, 26, 23, 22, 15, 16, and 9-T67N-R6W to a point approximately 2800 feet south of the NW Corner Section 9-T67N-R6W; thence northerly through the east part of Section 8-T67N-R6W to a point near the NE Corner said Section 8; thence northerly following substantially the section line of Section 4-T67N-R6W to the south corporation line of the City of Donnellson, connecting with an unnamed street.

Donnellson:

Beginning at the south corporation line connecting with an unnamed street; thence northerly to the north corporation line connecting with an unnamed street.

Beginning again on the north corporation line of the City of Donnellson, connecting with an unnamed street; thence north following substantially the section line of Sections 28, 21, and 16-T68N-R6W to a point approximately 1100 feet north of the SW Corner of said Section 16; thence northerly through the east part of Sections 17, 8, and 5-T68N-R6W to a point approximately 1600 feet north of the SE Corner Section 5-T68N-R6W; thence northerly following substantially the section line of Section 4-T68N-R6W (junction Iowa 103) and Sections 33, 28, 21, 16 (junction Iowa 16) and 9-T69N-R6W to a point approximately 200 feet north of the SW Corner Section 9-T69N-R6W; thence northerly through the east part of Sections 8 and 5-T69N-R6W to a point approximately 300 feet south of the NE Corner Section 5-T69N-R6W; thence northerly following substantially the section line of Section 4-T69N-R6W to the Lee-Henry County line at a point near the NW Corner of Section 4-T69N-R6W, Lee County, (SW Corner of Section 33-T70N-R6W, Henry County).

NOW, THEREFORE: Be it resolved that the Iowa Department of Transportation approve the location of US 218, Lee County, Iowa.

NOTE: To become effective upon the adoption of this resolution.

OFFICIAL DESCRIPTION CHANGE

COUNTY: LEE

ROUTE: US 218

APPROVAL DATE: 10-21-59

Beginning on the west corporation line of the City of Keokuk, connecting with Main Street; thence in a northwesterly direction through Section 23, 14, 15, 10, 9 and 4-T65N-R5W and in a northerly direction through Sections 33, 28, 21 and 16-T66N-R5W to a point approximately 1000 feet south and 1000 feet east of the center of Section 16-T66N-R5W; thence in a northwesterly direction to a point approximately 500 feet south and 400 feet east of the center of Section 16-T66N-R5W; thence in a northwesterly direction through Sections 16, 17, 8, 7 and 6-T66N-R5W, Section 1-T66N-R6W and Section 36, 35, 26, 23, 22, 15, 16 and 9-T67N-R6W to a point approximately ¼ mile north of the SW Corner of Section 9-T67N-R6W; thence north following substantially the section line to the south corporation line of the Town of Donnellson, connecting with Main Street.

Beginning again on the north corporation line of the Town of Donnellson, connecting with Main Street; thence north following substantially the section line to the Lee-Henry County line at a point near the NW Corner of Section 4-T69N-R6W, Lee County (SW Corner of Section 33-T70N-R6W, Henry County).

OFFICIAL DESCRIPTION CHANGE

COUNTY: Lee

CITY OF: Keokuk

ROUTE: US 218

APPROVAL DATE: 10-21-59

Beginning at the intersection of Main and Seventh Streets; thence northwesterly on Main Street to the west corporation line.

OFFICIAL DESCRIPTION CHANGE

COUNTY: Lee

APPROVAL DATE: 4-14-37

Connecting Curves.

Junction of Iowa 16 and US 218:

Beginning at a point approximately 200 feet west of the SE Corner of Section 8-T69N-R6W; thence curving in a northeasterly direction to a point approximately 200 feet north of the SE Corner of Section 8-T69N-R6W.

Beginning at a point approximately 200 feet south of the NE Corner of Section 17-T69N-R6W; thence curving in a northwesterly direction to a point approximately 200 feet west of the NE Corner Section 17-T69N-R6W.

Junction of Iowa 103 and US 218:

Beginning at a point approximately 600 feet east of the NW Corner of Section 4-T68N-R6W; thence curving in a southwesterly direction to a point approximately 600 feet south of the NW Corner of Section 4-T68N-R6W.

OFFICIAL DESCRIPTION CHANGE

COUNTY: Lee

CITY OF: Donnellson

ROUTE: US 218

APPROVAL DATE: 2-5-36

Commencing on Main Street at the south corporation line; thence northerly on Main Street to the north corporation line,

NOTE: Revised from US 161 to US 218 October 11, 1937.