

OFFICIAL DESCRIPTION CHANGE

OFFICE: Transportation Data

EFFECTIVE DATE: 07-01-2003

ENTERED BY: Stefani Wonders

ENTERED DATE: 08-22-2006

DISCUSSION/BACKGROUND:

Senate File 451 transferred the portion of US 275 in Pottawattamie County, from the Pottawattamie-Mills County line at a point approximately $\frac{1}{4}$ mile west of the SE Corner of Section 33-T74N-R43W, Pottawattamie County (NE Corner of Section 4-T73N-R43W, Mills County); thence northwesterly, northeasterly, northerly, and northwesterly through Sections 33, 34, 27, 22, 15, 16, 17, and 8-T74N-R43W to the south corporation line of the Council Bluffs connecting with Old Iowa 275, to county jurisdiction on July 1, 2003.

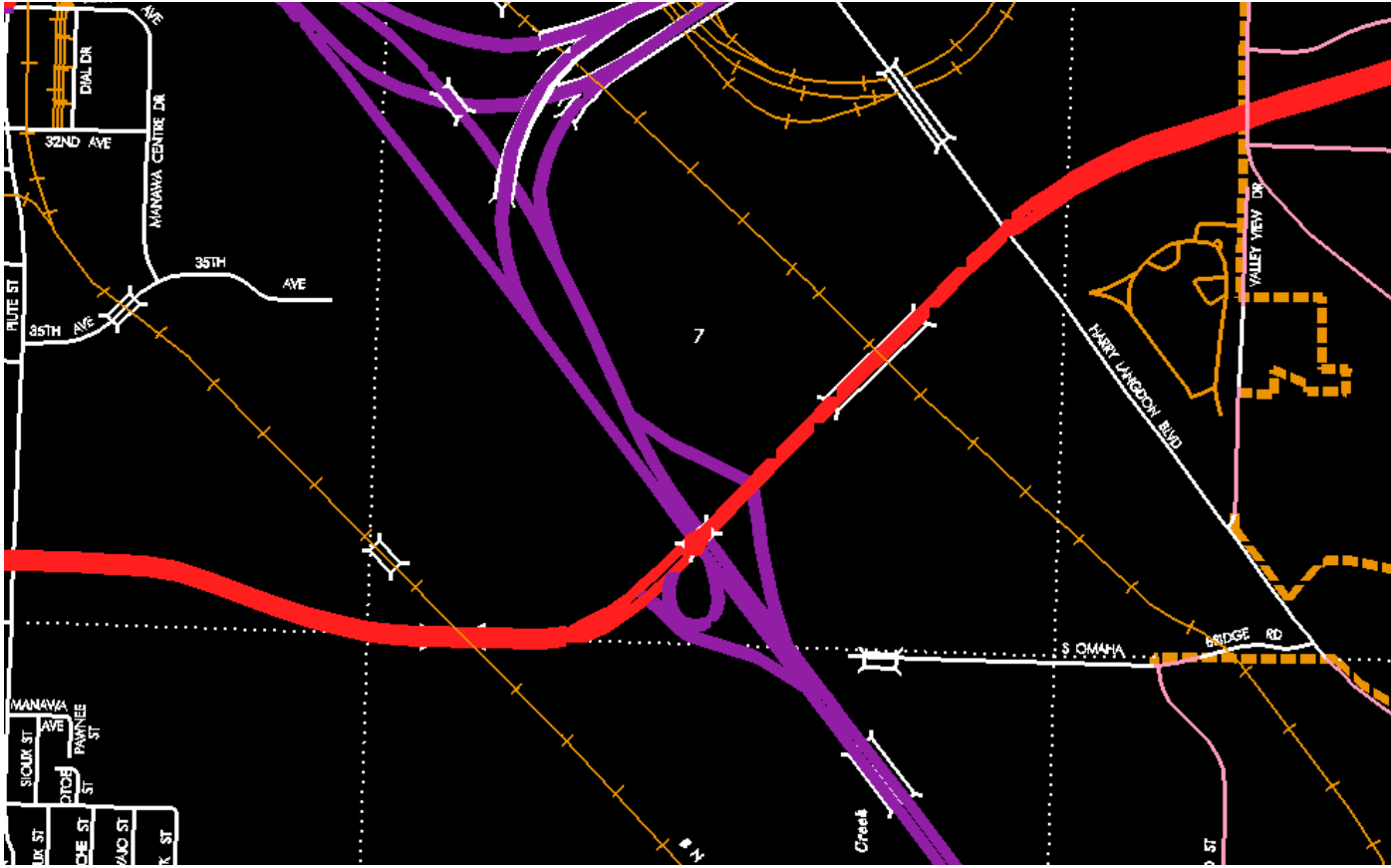
PROPOSAL/ACTION RECOMMENDATION:

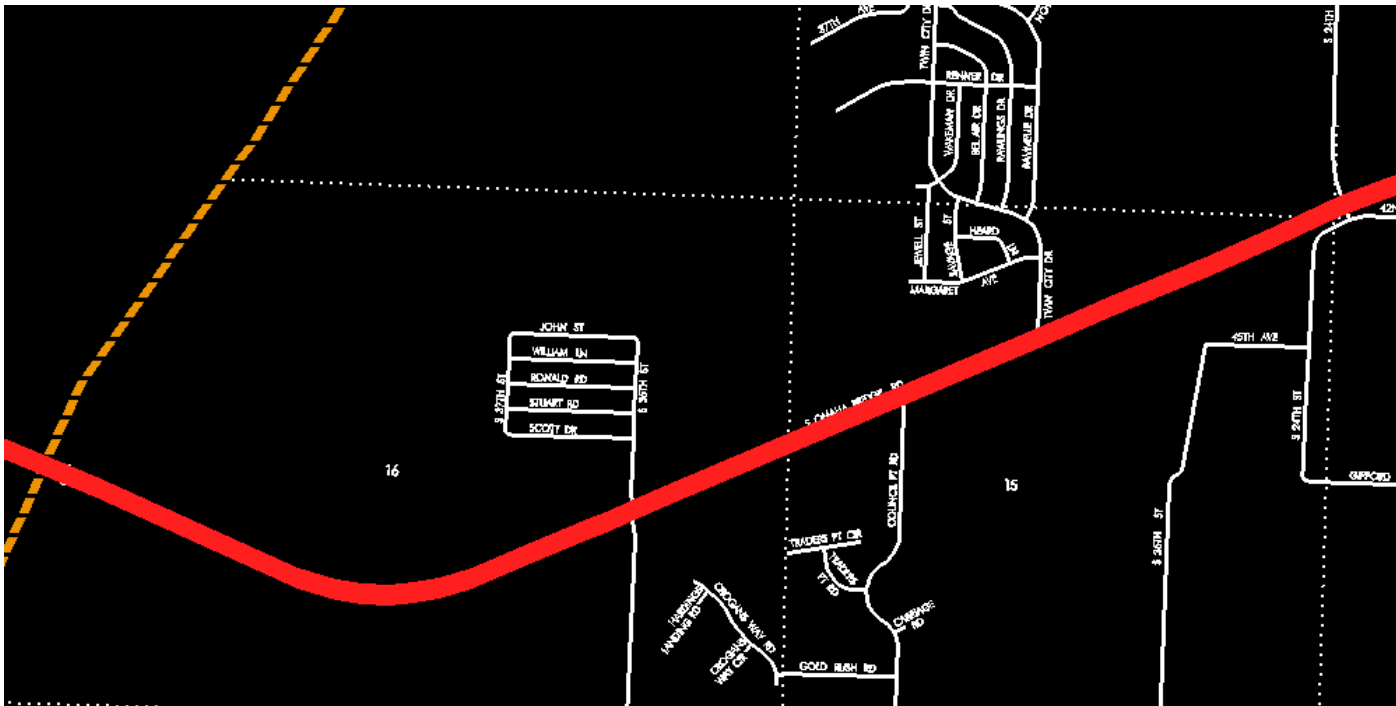
It is recommended that the old description of US 275 and its extensions in Pottawattamie County be deleted and the new description be included in the Primary Road System.

New Description - US 275 and its extensions in Pottawattamie County described as follows:

Council Bluffs:

Beginning at the junction of Old Iowa 375 (approximately 2217 feet south and 476 feet west of the NW Corner Section 8-T74N-R43W) (Harry Langston Boulevard) connecting with Omaha Bridge Road; thence southwesterly and westerly on Omaha Bridge Road to the west corporation line (Iowa-Nebraska State line).





OFFICIAL DESCRIPTION CHANGE

COUNTY: Pottawattamie

STAFF ACTION NUMBER: S-03-0386

SUBMITTED BY: Peggi Knight

MEETING DATE: 11-13-2002

DISCUSSION/BACKGROUND:

Transfer of jurisdiction agreement number TJ-275-0 (8), between the City of Council Bluffs and the Iowa Department of Transportation, transferred that portion of US 275 from the south corporation line of Council Bluffs to Iowa 92 to city jurisdiction on October 20, 1981.

New Description – US 275 and its extensions in Pottawattamie County described as follows:

Beginning on the Pottawattamie–Mills County line at a point approximately ¼ mile west of the SE Corner of Section 33–T74N–R43W, Pottawattamie County (NE Corner of Section 4–T73N–R43W, Mills County); thence northwesterly, northeasterly, northerly, and northwesterly through Sections 33, 34, 27, 22, 15, 16, 17, and 8–T74N–R43W to the south corporation line of the Council Bluffs connecting with Old Iowa 275.

Council Bluffs:

Beginning at the junction of Interstate 29 and Iowa 92, connecting with Iowa 92 (Omaha Bridge Road); thence southwesterly, northwesterly, and southwesterly on Iowa 92 (Omaha Bridge Road) to the west corporation line (Iowa–Nebraska State line) connecting with an unnamed street.

PROPOSAL/ACTION RECOMMENDATION:

It is recommended that the old description of US 275 and its extensions in Pottawattamie County be deleted and the new description be included in the Primary Road System.

COMMISSION ORDER

DIVISION: Planning & Research

COMMISSION ORDER NUMBER: PR–79–272

SUBMITTED BY: C.I. MacGillivray

MEETING DATE: 11–2–78

DISCUSSION/BACKGROUND:

Due to a review of our Primary Road System records US 275 in Pottawattamie County should be deleted and the new description added should be officially included into the Primary System.

US 275 begins on the Pottawattamie–Mills County line approximately 5 miles east of the Missouri River and travels in a generally northwesterly direction via Council Bluffs to the Iowa–Nebraska border at the west corporation line of Council Bluffs, Iowa.

PROPOSAL/ACTION RECOMMENDATION:

Locate US 275 and its extension in Pottawattamie County as follows:

Beginning on the Pottawattamie–Mills County line at a point approximately ¼ mile west of the SE Corner Section 33–T74N–R43W, Pottawattamie County (NE Corner Section 4–T73N–R43W, Mills County); thence northwesterly, northeasterly, northerly and northwesterly through Sections 33, 34, 27, 22, 15, 16, 17 and 8–T74N–R43W, to the east corporation line of the City of Council Bluffs connecting with an unnamed street.

Council Bluffs:

Beginning on the east corporation line connecting with an unnamed street; thence northwesterly and southwesterly to the west corporation line (Iowa–Nebraska State line) connecting with an unnamed street.

NOW, THEREFORE: Be it resolved that the Iowa Department of Transportation approve the location of US 275 in Pottawattamie County, Iowa.

NOTE: To become effective upon the adoption of this resolution.

REVISED: 6–14–74

COMMISSION RESOLUTION

DIVISION: Planning & Research

COMMISSION ORDER NUMBER: 68-1414

SUBMITTED BY: Raymond L. Kassel

MEETING DATE: 10-16-68

Locate US 275 in Pottawattamie County as follows:

Beginning on the Mills-Pottawattamie County line at a point approximately $\frac{1}{4}$ mile west of the SE Corner Section 33-T74N-R43W, Pottawattamie County (NE Corner Section 4-T73N-R43W, Mills County); thence northwesterly, northeasterly, northerly, and northwesterly through Sections 33, 34, 27, 22, 15, 16, 17, and 8-T74N-R43W to the east corporation line of the City of Council Bluffs, connecting with an unnamed street.

Council Bluffs:

Beginning on an unnamed street at the east corporation line thence northwesterly on said unnamed street to another unnamed street (Iowa 92); thence southwesterly and westerly on said unnamed street (Iowa 92) to the west corporation line.

Beginning again on the west corporation line of the City of Council Bluffs and connecting with an unnamed street; thence westerly, southwesterly, and westerly through Sections 11, 15 and 16-T74N-R44W to the Iowa-Nebraska State line on the South Omaha Bridge over the Missouri River.

NOW THEREFORE: Be it resolved that the Iowa State Highway Commission approve the revision of the above Primary Road System.

NOTE: To become effective upon adoption of this resolution.