

OFFICIAL DESCRIPTION CHANGE

OFFICE: Transportation Data

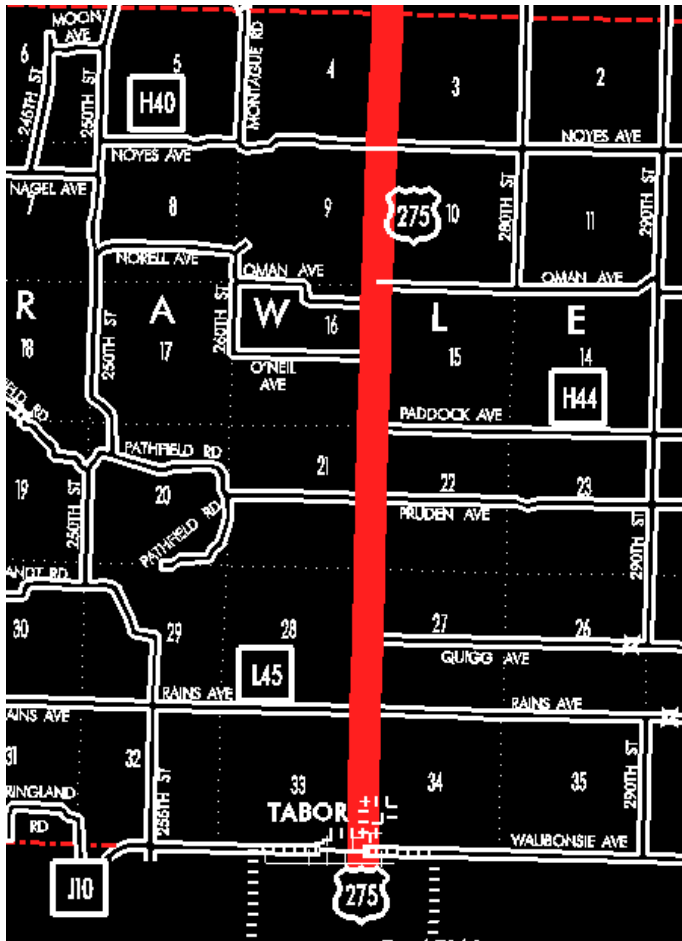
EFFECTIVE DATE: 07-01-2003

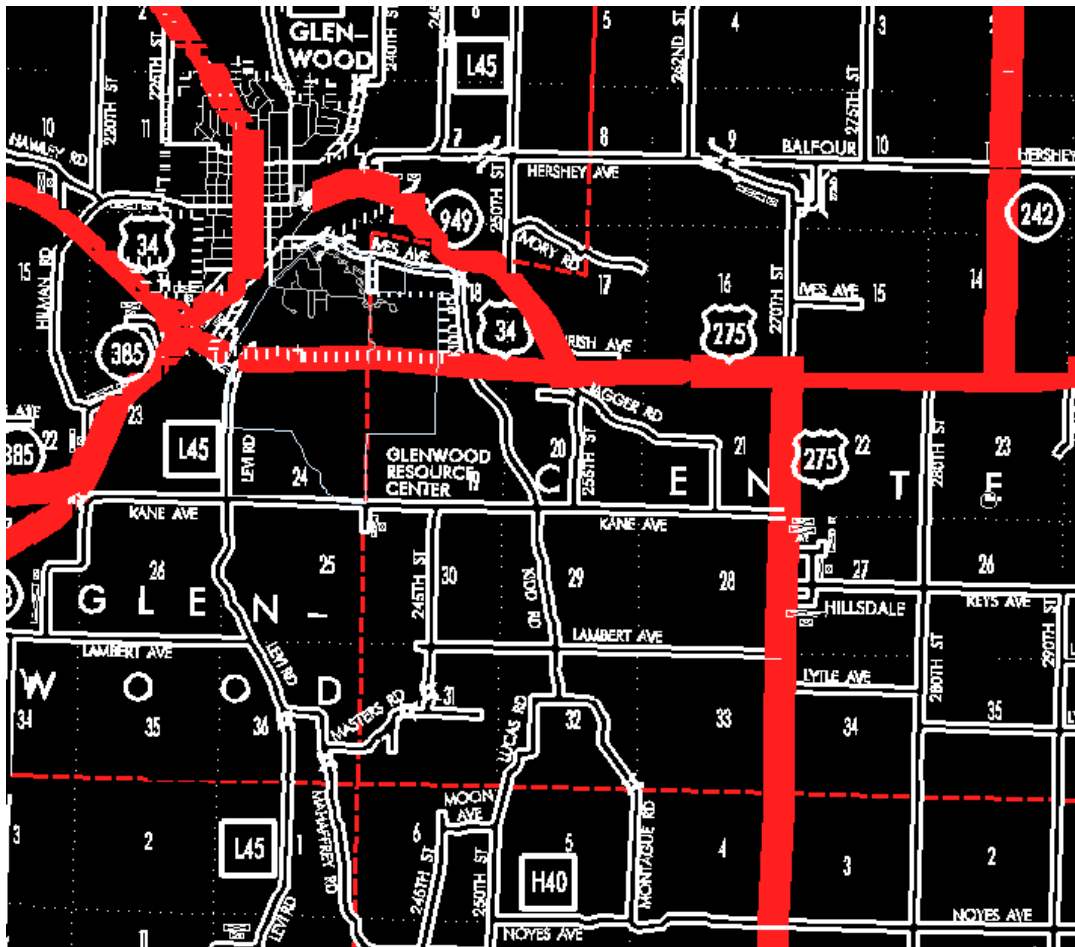
ENTERED BY: Stefani Wonders

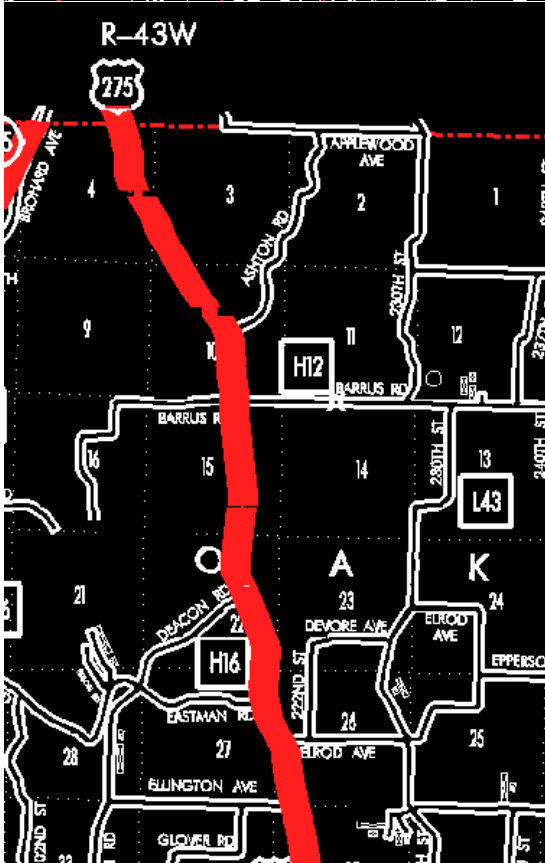
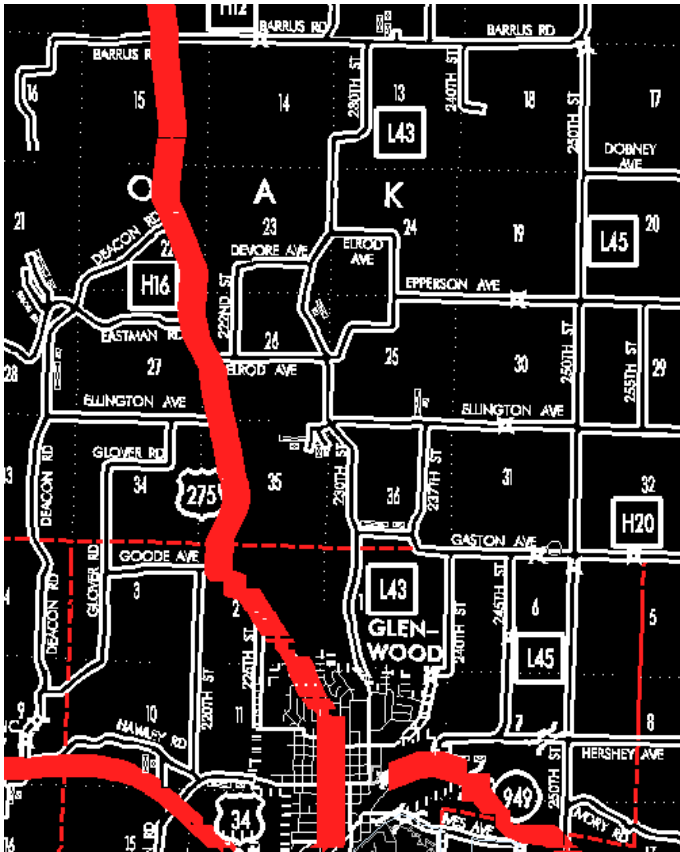
ENTERED DATE: 08-22-2006

DISCUSSION/BACKGROUND:

Senate File 451 transferred US 275 in its entirety, in Mills County, to city and county jurisdiction on July 1, 2003.







OFFICIAL DESCRIPTION CHANGE

COUNTY: Mills

ROUTE: US 275

STAFF ACTION NUMBER: S-87-1530

APPROVAL DATE: 5-13-87

New Description: US 275 and its extensions in Mills County described as follows:

Tabor:

Beginning on Main Street at the Mills-Fremont County line; thence north on Main Street to the north corporation line.

Beginning on the north corporation line of Tabor connecting with Main Street; thence north following substantially the section line of Sections 34, 27, 22, 15, 10, and 3-T71N-R42W and Sections 34, 27, and 22-T72N-R42W (east junction US 34) to a point near the NE Corner Section 21-T72N-R42W; thence west following substantially the section line of Sections 21, 20, and 19-T72N-R42W to a point approximately 1,000 feet west of the NE Corner Section 19-T72N-R42W; thence westerly through the south part of Section 18-T72N-R42W and Section 13-T72N-R43W to a point approximately 1,350 feet east of the SW Corner said Section 13; thence southwesterly and northwesterly through Section 24-T72N-R43W to a point approximately 600 feet east of the NW Corner said Section 24; thence northwesterly through Section 13-T72N-R43W to the east corporation line of Glenwood, connecting with an unnamed street.

Glenwood:

Beginning on an unnamed street at the east corporation line; thence northwest on unnamed street to the west corporation line.

Beginning again on the west corporation line of Glenwood connecting with an unnamed street; thence northwesterly through Section 14-T72N-R43W to a point approximately 495 feet east of the W ¼ Corner SE ¼ Section 14-T72N-R43W (west junction US 34); thence in a northeasterly direction through Section 14-T72N-R43W to the south corporation line of Glenwood connecting with Locust Street.

Glenwood:

Beginning on Locust Street at the south corporation line; thence northeasterly, northerly and northwesterly on Locust Street to the north corporation line.

Beginning again on the north corporation line of Glenwood connecting with Locust Street; thence in a northwesterly direction through Sections 11 and 2-T72N-R43W and Sections 35, 26, 27, 22, 15, 10, 3, and 4-T73N-R43W to the Mills-Pottawattamie County line at a point approximately 1,320 feet west of the NE Corner Section 4-T73N-R43W, Mills County (SE Corner Section 33-T74N-R43W, Pottawattamie County).

OFFICIAL DESCRIPTION CHANGE

COUNTY: Mills

ROUTE: US 275

APPROVAL DATE:

Locate US 275 and its extensions in Mills County as follows:

Tabor:

Beginning at the Mills-Fremont County line on an unnamed street; thence northerly to the north corporation line connecting with an unnamed street.

Beginning on the north corporation line of the City of Tabor connecting with an unnamed street; thence north following substantially the section line of Sections 34, 27, 22, 15, 10, and 3-T71N-R42W and Sections 34, 27, and 22-T72N-R42W (east junction US 34) to a point near the NE Corner Section 21-T72N-R42W; thence west following substantially the section line of Sections 21, 20, and 19-T72N-R42W to a point approximately 1,000 feet west of the NE Corner Section 19-T72N-R42W; thence westerly through the south part of Section 18-T72N-R42W and Section 13-T72N-R43W to a point approximately 1350 feet east of the SW Corner said Section 13; thence southwesterly and northwesterly through Section 24-T72N-R43W to a point approximately 600 feet east of the NW Corner said Section 24; thence northwesterly through Section 13 T72N-R43W to the east corporation line of the City of Glenwood, connecting with an unnamed street.

Glenwood:

Beginning on the east corporation line connecting with an unnamed street; thence northwesterly to the west corporation line connecting with an unnamed street.

Beginning again on the west corporation line of the City of Glenwood connecting with an unnamed street; thence northwesterly through Section 14, T72-R43N to a point approximately 495 feet east of the W $\frac{1}{4}$ Corner Section 14-T72N-R43W (west junction US 34) thence in a northeasterly direction through Section 14-T72N-R43W to the south corporation line of the City of Glenwood connecting with an unnamed street.

Glenwood:

Beginning at the south corporation line connecting with an unnamed street; thence northeasterly, northerly, and northwesterly to the north corporation line connecting with an unnamed street.

Beginning again on the north corporation line of the City of Glenwood connecting with an unnamed street; thence, in a northwesterly direction through Sections 11 and 2-T72N-R43W and Sections 35, 26, 27, 22, 15, 10, 3, and 4-T73N-R43W to the Mills-Pottawattamie County line at a point approximately 1320 feet west of the NE Corner Section 4-T73N-R43W, Mills County (SE Corner Section 33-T74N-R43W, Pottawattamie County).

REVISED: 5-13-87

COMMISSION ORDER

DIVISION: Planning & Research

COMMISSION ORDER NUMBER: PR-79-272

SUBMITTED BY: C.I. MacGillivray

MEETING DATE: 11-2-78

DISCUSSION/BACKGROUND:

Due to a review of our Primary Road System records, Mills County should be deleted from the Primary Road System added and the new description should be officially included into the Primary Road System.

US 275 begins in Tabor at the Mills-Fremont County line and travels in a northerly and northwesterly direction to the Mills-Pottawattamie County line via the City of Glenwood, Iowa.

PROPOSAL/ACTION RECOMMENDATION:

Locate US 275 and its extensions in Mills County as follows:

Tabor:

Beginning at the Mills–Fremont County line on an unnamed street; thence northerly to the north corporation line connecting with an unnamed street.

NOTE: See Fremont County.

Beginning on the north corporation line of the City of Tabor connecting with an unnamed street; thence north following substantially the section line of Sections 34, 27, 22, 15, 10, and 3–T71N–R42W and Sections 34, 27, and 22–T72N–R42W (east junction US 34) to a point near the NE Corner Section 21–T72N–R42W; thence west following substantially the section line of Sections 21, 20, and 19–T72N–R42W to a point approximately 1,000 feet west of the NE Corner Section 19–T72N–R42W; thence westerly through the south part of Section 18–T72N–R42W and Section 13–T72N–R43W to a point approximately 1350 feet east of the SW Corner said Section 13; thence southwesterly and northwesterly through Section 24–T72N–R43W to a point approximately 600 feet east of the NW Corner said Section 24; thence northwesterly through Sections 13 and 14–T72N–R43W to a point approximately 825 feet west of the SE Corner Section 14–T72N–R43W; thence in a northwesterly direction to a point approximately 495 feet east of the W $\frac{1}{4}$ Corner SE $\frac{1}{4}$ Section 14–T72N–R43W (west junction US 34); thence in a northeasterly direction through Section 14–T72N–R43W to the south corporation line of the City of Glenwood connecting with an unnamed street.

Glenwood:

Beginning at the south corporation line connecting with an unnamed street; thence northeasterly, northerly, and northwesterly to the north corporation line connecting with an unnamed street.

Beginning again on the north corporation line of the City of Glenwood connecting with an unnamed street; thence in a northwesterly direction through Sections 11 and 2–T72N–R43W and Sections 35, 26, 27, 22, 15,

10, 3, and 4-T73N-R43W to the Mills-Pottawattamie County line at a point approximately 1320 feet west of the NE Corner Section 4-T73N-R43W, Mills County (SE Corner Section 33-T74N-R43W, Pottawattamie County).

NOW, THEREFORE: Be it resolved that the Iowa Department of Transportation approve the location of US 275, Mills County, Iowa.

NOTE: To become effective upon the adoption of this resolution.

OFFICIAL DESCRIPTION CHANGE

COUNTY: Mills

ROUTE: US 275

APPROVAL DATE: 2-6-74

Tabor:

See Fremont County

Beginning on the north corporation line of the Town of Tabor (Mills-Fremont County line) connecting with Main Street; thence north following substantially the section line to a point near the NE Corner of Section 21-T72N-R42W; thence west following substantially the section line along the south line of Sections 16, 17, and 18-T72N-R42W; thence westerly following substantially along the south line of Sections 13 and 14-T72N-R43W to a point approximately 825 feet west of the SE Corner Section 14-T72N-R43W; thence in a northwesterly direction to a point approximately 495 feet east of the W ¼ Corner SE ¼ Section 14-T72N-R43W; thence in a northeasterly direction to the south corporation line of the Town of Glenwood connecting with Locust Street.

Glenwood:

Commencing on Locust Street at the south corporation line; thence northeasterly and north on Locust to the intersection of Sharp Street; thence northerly and northwesterly on Locust Street to the north corporation line.

Beginning again on the north corporation line of the Town of Glenwood connecting with Locust Street; thence in a northwesterly direction through Section 11 and 2-T72N-R43W and Sections 35, 26, 27, 22, 15, 10, 3 and 4-T73N-R43W to the Mills-Pottawattamie County line at a point approximately $\frac{1}{4}$ mile west of the NE Corner Section 4-T73N-R43W, Mills County (SE Corner Section 33-T74N-R43W, Pottawattamie County).